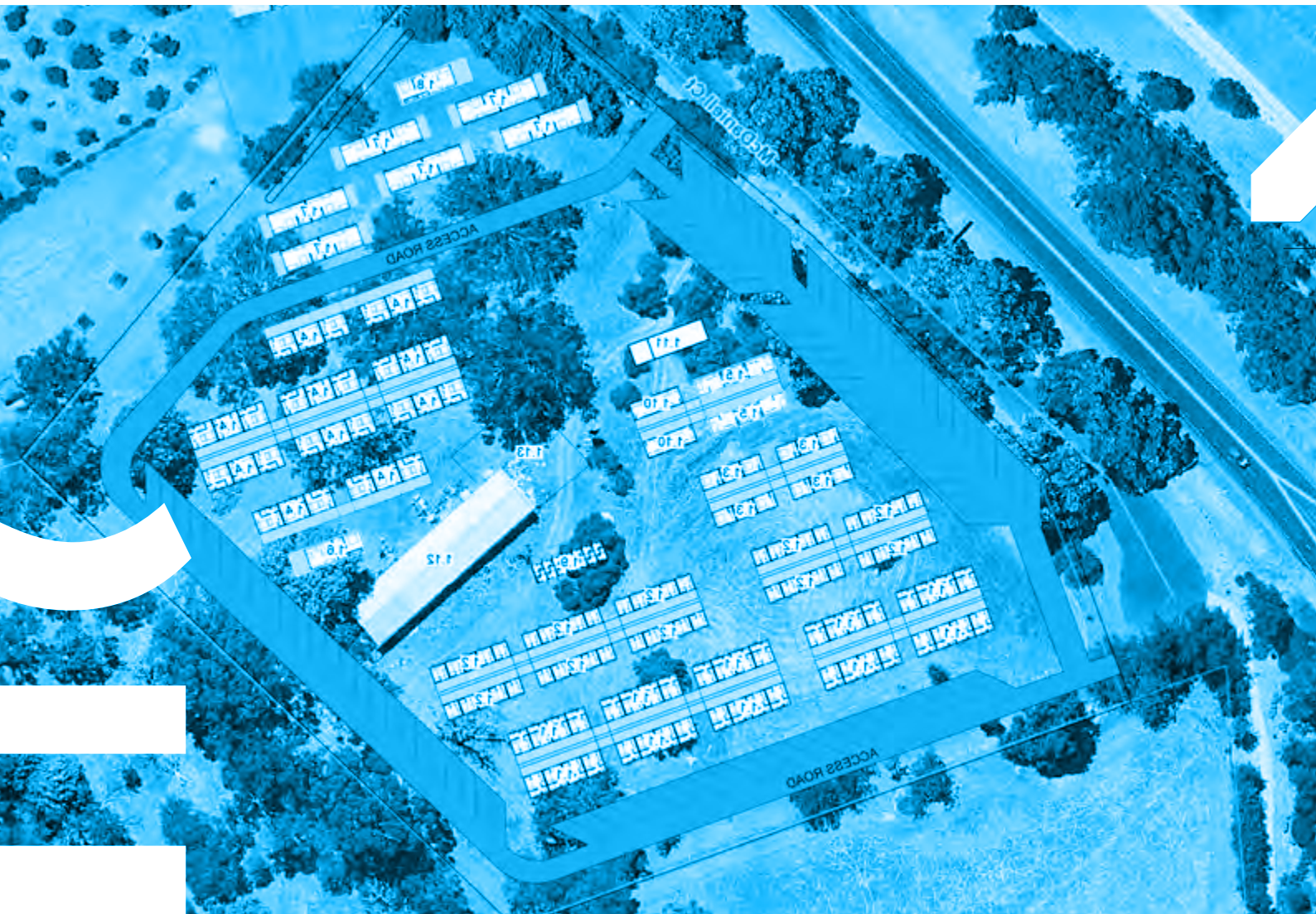
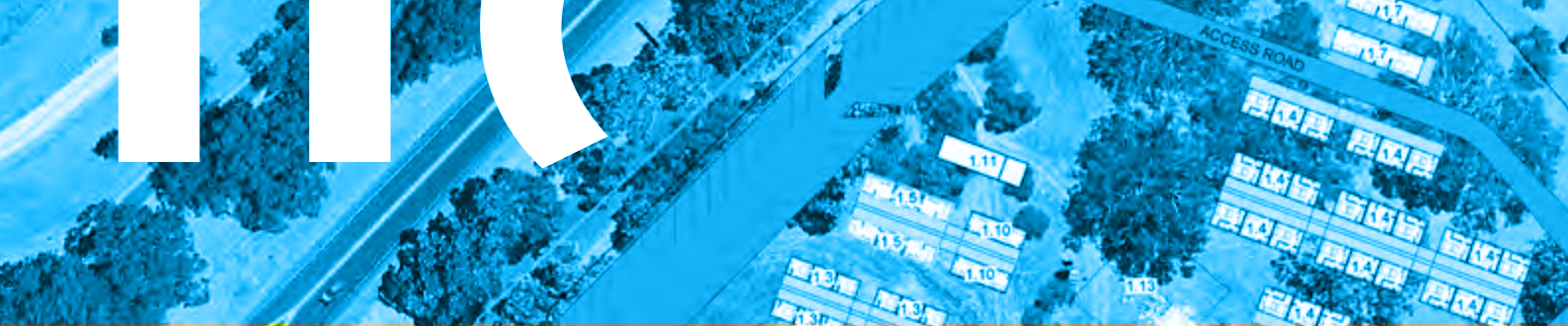


SW Workers Accommodation Village ROI





SW Workers Accommodation Village

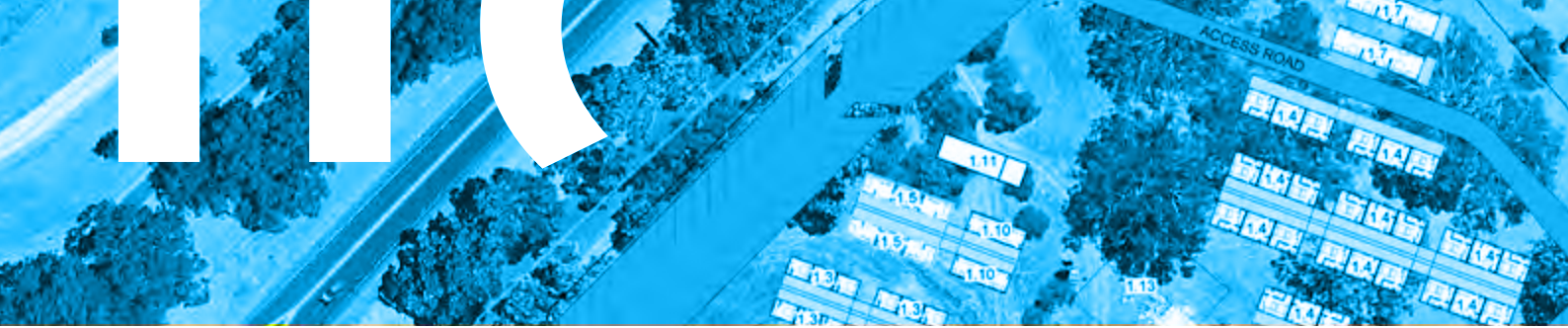
The Workers Accommodation Village offers a unique solution, bridging the gap between caravan parks and hotels.

The brief is to provide a secure, gated accommodation village with various levels of accommodation options and integrated shared social facilities. These shared spaces are intended to provide mixed opportunities for interaction among participants, enhancing the fabric of communal living and its responsibilities.

The project emphasizes sustainable practices in both its construction and use of services. The build form is designed to have minimal environmental impact through elevated living, stormwater bio-drainage, and modular construction. A passive energy approach of additional shading for structures and solar-powered solutions, such as site lighting towers, building and carpark PV systems will be implemented.

The location is to be centrally located between town/urban centres to reduce the impact of transport reach but also close enough to have town & coastal amenities available within walking distance.

The village is to be on a management profile of site managers and staff. Accommodation is offered with a minimum stay of one week, featuring fully serviced rooms with laundry changed weekly and on-site personal laundry facilities. Residents will also have access to extensive communal amenities, including a fully equipped kitchen, cold and dry storage, theatre,



library, recreation rooms, indoor and alfresco dining areas, BBQ and social alfresco spaces, gazebos, and an outdoor gym. BBQ and social alfresco, gazebos & outdoor gym.

→ Accommodation to appeal to mixed levels of single bed local amenities to self contained suites.

→ Breezeways to living pods

→ Register your interest now:

www.sandcastle.agency/south-west-workers-accommodation-roi

Go to the next
page for:

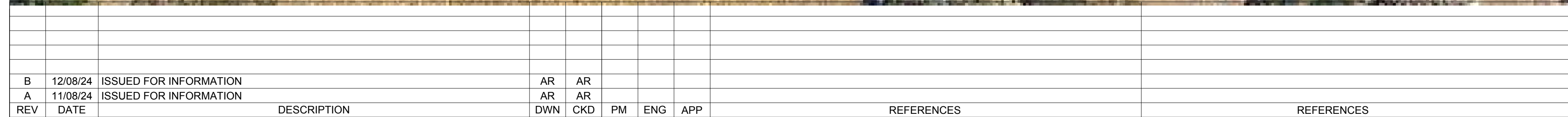
**SW Workers
Accommodation
Village Plans**



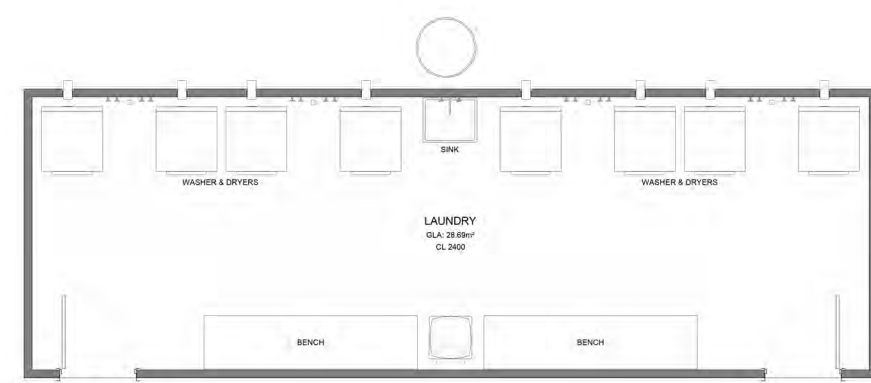
arc+d



Kieran O'Neill
0422 614 655
kieran@cogplex.com.au

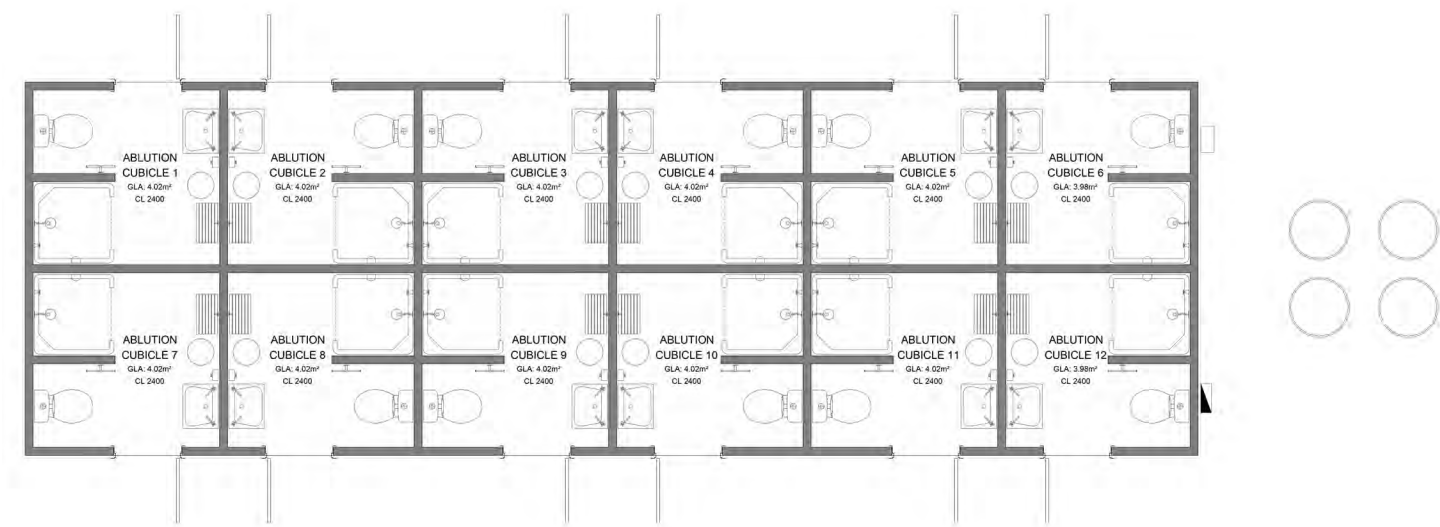
Aaron Rycroft
0408 750 105
a.rycroft@consultinganddesign.com.au



<p>Project Management</p>  <p>complex your project, our expertise</p>		
<p>Designer</p>  <p>consultinganddesign.com.au</p>		
<p>WORKERS ACCOMMODATION VILLAGE GENERAL ARRANGEMENT</p> <p>DRAWING NUMBER</p> <p>00360-00-A001</p>		<p>REVISION</p> <p>B</p>







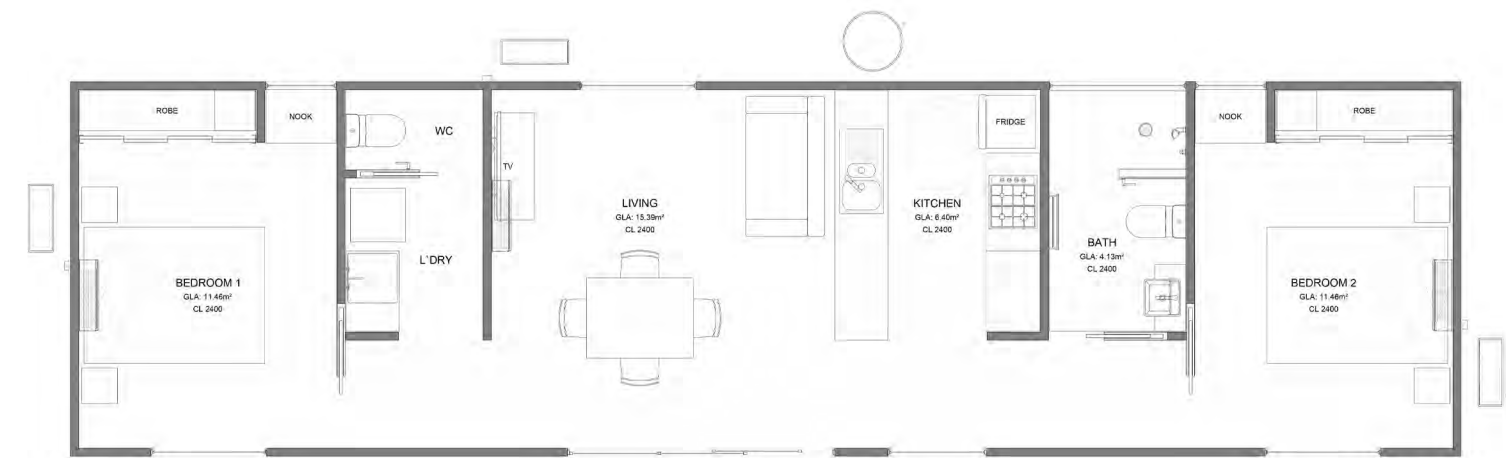
Project Management											
Design											
										LAUNDRY BLOCK FLOOR PLAN 00360-20-4001	



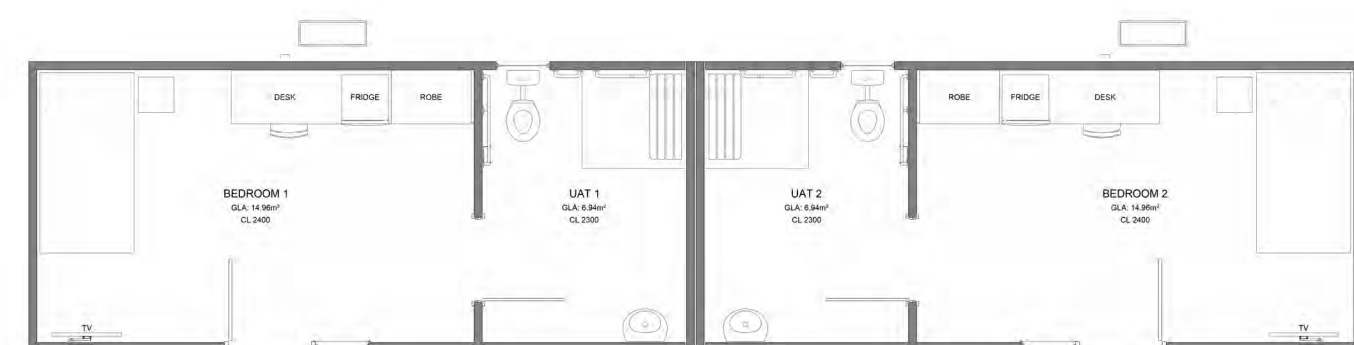
<



<div style="display: flex; justify-content: space-between;"> <div>  </div> <div> <div>Project Management</div> <div>  </div> </div> </div>									
<div style="display: flex; justify-content: space-between;"> <div> <div>Design</div> <div>  </div> </div> <div> <div>SCALE 1:20</div> <div>SHEET 120 - 1</div> </div> </div>									
<div style="display: flex; justify-content: space-between;"> <div> <div>DESIGNED BY</div> <div>DRAGON SITE</div> <div>PROJECT MANAGER</div> <div>APPROVED BY</div> </div> <div> <div>11 AUGUST 2024</div> <div>  </div> </div> </div>									
<div style="display: flex; justify-content: space-between;"> <div> <div>010000 - PRELIMINARY</div> <div>010000 - PRELIMINARY</div> <div>010000 - PRELIMINARY</div> </div> <div> <div>010000 - PRELIMINARY</div> <div>010000 - PRELIMINARY</div> <div>010000 - PRELIMINARY</div> </div> </div>									
<div style="display: flex; justify-content: space-between;"> <div> <div>DESCRIPTION</div> <div>DESCRIPTION</div> <div>DESCRIPTION</div> </div> <div> <div>DESCRIPTION</div> <div>DESCRIPTION</div> <div>DESCRIPTION</div> </div> </div>									
<div style="display: flex; justify-content: space-between;"> <div> <div>APPENDICES</div> <div>APPENDICES</div> <div>APPENDICES</div> </div> <div> <div>APPENDICES</div> <div>APPENDICES</div> <div>APPENDICES</div> </div> </div>									
<div style="display: flex; justify-content: space-between;"> <div> <div>MANAGE PPS RESIDENCE</div> <div>FLOOR PLAN</div> <div>03060-08-A001</div> </div> <div> <div>MANAGE PPS RESIDENCE</div> <div>FLOOR PLAN</div> <div>03060-08-A001</div> </div> </div>									

[illegible]

										Project Manager 	
										Designer 	
										ACCOMMODATION UNIT - 3 ROOM (ENLARGED) FLOOR PLAN 03/30/24-A-001	



										 Project Management 2010-2011-2012	
										 Design	
										ACCOMMODATION UNIT - 3 ROOM UNIT 3 ROOM UNIT 030605-05-A001	



										 cogplex <small>an aec company of mcdia</small>	
										 airc+d <small>air conditioning & design</small>	
										Project Name: ACCOMMODATION UNIT - 1 ROOM (SC) FLOOR PLAN Drawing No: 00390-07-A001	
										Revision: 01 Date: 07/07/2021	
										Scale: 1:50 Sheet No: 12	
										Drawn by: Y. K. S. S. S. Checked by: Y. K. S. S. S. Approved by: Y. K. S. S. S. Date: 07/07/2021	
										Project Location: ROOM (SC) FLOOR PLAN Project No: 00390-07-A001 Project Name: ACCOMMODATION UNIT - 1 ROOM (SC) FLOOR PLAN	
										Project Manager: Y. K. S. S. S. Project Engineer: Y. K. S. S. S. Project Designer: Y. K. S. S. S. Project Checker: Y. K. S. S. S. Project Approver: Y. K. S. S. S. Project Date: 07/07/2021	
										Project Status: 01 Project Type: 01 Project Category: 01 Project Sub-Category: 01 Project Phase: 01 Project Sub-Phase: 01 Project Task: 01 Project Sub-Task: 01 Project Item: 01 Project Sub-Item: 01 Project Detail: 01 Project Sub-Detail: 01 Project Component: 01 Project Sub-Component: 01 Project Part: 01 Project Sub-Part: 01 Project Assembly: 01 Project Sub-Assembly: 01 Project System: 01 Project Sub-System: 01 Project Equipment: 01 Project Sub-Equipment: 01 Project Material: 01 Project Sub-Material: 01 Project Finish: 01 Project Sub-Finish: 01 Project Fixture: 01 Project Sub-Fixture: 01 Project Fitting: 01 Project Sub-Fitting: 01 Project Fastener: 01 Project Sub-Fastener: 01 Project Hardware: 01 Project Sub-Hardware: 01 Project Tool: 01 Project Sub-Tool: 01 Project Machine: 01 Project Sub-Machine: 01 Project Vehicle: 01 Project Sub-Vehicle: 01 Project Vessel: 01 Project Sub-Vessel: 01 Project Structure: 01 Project Sub-Structure: 01 Project Foundation: 01 Project Sub-Foundation: 01 Project Frame: 01 Project Sub-Frame: 01 Project Wall: 01 Project Sub-Wall: 01 Project Floor: 01 Project Sub-Floor: 01 Project Ceiling: 01 Project Sub-Ceiling: 01 Project Roof: 01 Project Sub-Roof: 01 Project Window: 01 Project Sub-Window: 01 Project Door: 01 Project Sub-Door: 01 Project Stair: 01 Project Sub-Stair: 01 Project Elevator: 01 Project Sub-Elevator: 01 Project Escalator: 01 Project Sub-Escalator: 01 Project Ramp: 01 Project Sub-Ramp: 01 Project Bridge: 01 Project Sub-Bridge: 01 Project Tunnel: 01 Project Sub-Tunnel: 01 Project Pier: 01 Project Sub-Pier: 01 Project Jetty: 01 Project Sub-Jetty: 01 Project Wharf: 01 Project Sub-Wharf: 01 Project Quay: 01 Project Sub-Quay: 01 Project Dock: 01 Project Sub-Dock: 01 Project Basin: 01 Project Sub-Basin: 01 Project Harbour: 01 Project Sub-Harbour: 01 Project Port: 01 Project Sub-Port: 01 Project Canal: 01 Project Sub-Canal: 01 Project Strait: 01 Project Sub-Strait: 01 Project Bay: 01 Project Sub-Bay: 01 Project Sound: 01 Project Sub-Sound: 01 Project Gulf: 01 Project Sub-Gulf: 01 Project Sea: 01 Project Sub-Sea: 01 Project Ocean: 01 Project Sub-Ocean: 01 Project Lake: 01 Project Sub-Lake: 01 Project Pond: 01 Project Sub-Pond: 01 Project Reservoir: 01 Project Sub-Reservoir: 01 Project Dam: 01 Project Sub-Dam: 01 Project Barrage: 01 Project Sub-Barrage: 01 Project Weir: 01 Project Sub-Weir: 01 Project Lock: 01 Project Sub-Lock: 01 Project Sluice: 01 Project Sub-Sluice: 01 Project Tidal: 01 Project Sub-Tidal: 01 Project Wave: 01 Project Sub-Wave: 01 Project Current: 01 Project Sub-Current: 01 Project Tide: 01 Project Sub-Tide: 01 Project Wind: 01 Project Sub-Wind: 01 Project Storm: 01 Project Sub-Storm: 01 Project Hurricane: 01 Project Sub-Hurricane: 01 Project Cyclone: 01 Project Sub-Cyclone: 01 Project Monsoon: 01 Project Sub-Monsoon: 01 Project Rain: 01 Project Sub-Rain: 01 Project Snow: 01 Project Sub-Snow: 01 Project Ice: 01 Project Sub-Ice: 01 Project Fog: 01 Project Sub-Fog: 01 Project Cloud: 01 Project Sub-Cloud: 01 Project Raincloud: 01 Project Sub-Raincloud: 01 Project Sun: 01 Project Sub-Sun: 01 Project Moon: 01 Project Sub-Moon: 01 Project Star: 01 Project Sub-Star: 01 Project Comet: 01 Project Sub-Comet: 01 Project Meteor: 01 Project Sub-Meteor: 01 Project Asteroid: 01 Project Sub-Asteroid: 01 Project Planet: 01 Project Sub-Planet: 01 Project Galaxy: 01 Project Sub-Galaxy: 01 Project Universe: 01 Project Sub-Universe: 01 Project Time: 01 Project Sub-Time: 01 Project Space: 01 Project Sub-Space: 01 Project Matter: 01 Project Sub-Matter: 01 Project Energy: 01 Project Sub-Energy: 01 Project Force: 01 Project Sub-Force: 01 Project Mass: 01 Project Sub-Mass: 01 Project Length: 01 Project Sub-Length: 01 Project Width: 01 Project Sub-Width: 01 Project Height: 01 Project Sub-Height: 01 Project Depth: 01 Project Sub-Depth: 01 Project Area: 01 Project Sub-Area: 01 Project Volume: 01 Project Sub-Volume: 01 Project Weight: 01 Project Sub-Weight: 01 Project Density: 01 Project Sub-Density: 01 Project Temperature: 01 Project Sub-Temperature: 01 Project Pressure: 01 Project Sub-Pressure: 01 Project Humidity: 01 Project Sub-Humidity: 01 Project WindSpeed: 01 Project Sub-WindSpeed: 01 Project Rainfall: 01 Project Sub-Rainfall: 01 Project Snowfall: 01 Project Sub-Snowfall: 01 Project IceMelt: 01 Project Sub-IceM	



											
											
										ACCOUNTION UNIT - 4 ROOM (ENSUITE) 12 ROOM PLAN 00360-02-A001	

[illegible][illegible]