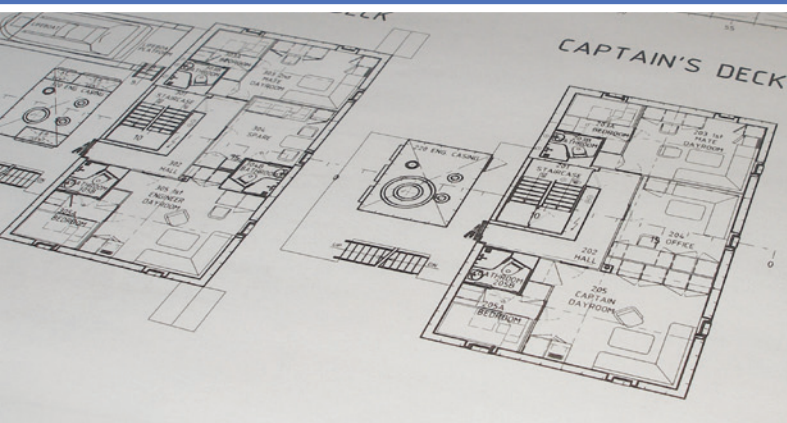


# EMERGENCY TOWING PROCEDURE FOR YOUR SHIP



*According to the provisions of amendment to SOLAS (IMO Res. MSC.256(84) of May 2008)  
All passenger and cargo ships above 500 GT shall be provided with a ship-specific Emergency Towing Procedure.  
The procedure shall be carried aboard the ship for use in emergency situations.*

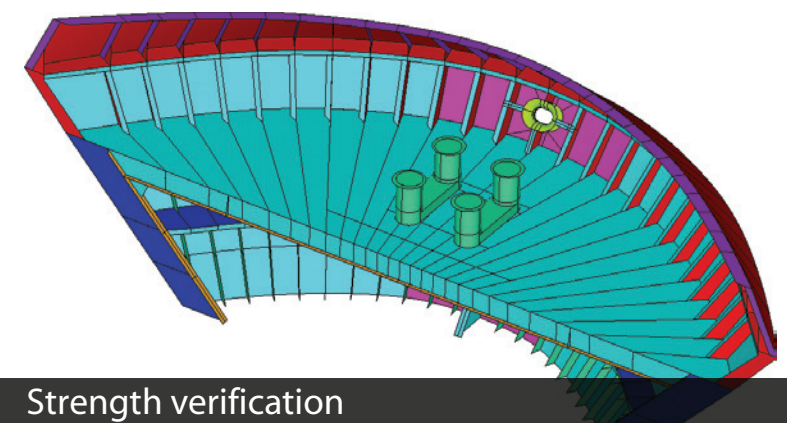
## Emergency Towing Procedure Stages



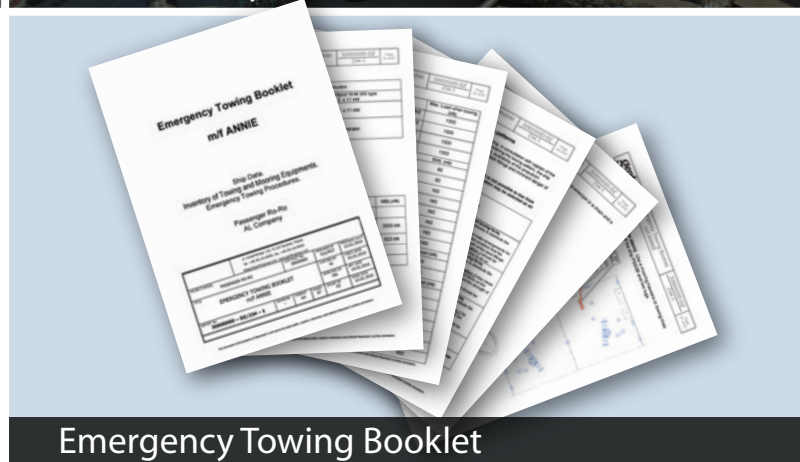
Verification of ship documentation



Onboard Inspection



Strength verification



Emergency Towing Booklet

**Our Experience:** Above 60 Emergency Towing Booklets for Passenger & Cargo ships already prepared.

For more information and competitive offer please contact:

Company address

Mr Piotr Żelazek  
Head of Design Office  
pze@westcondesign.com  
Mobile: +48 600 208 912

Mr Marek Nowak  
Senior Naval Architect  
mno@westcondesign.com  
Mobile: +48 600 208 913

Mr Alfred Jazukiewicz  
Head of Strength and Stability Dept.  
aja@westcondesign.com  
Mobile: +48 600 208 928

Westcon Design Poland Sp. z o.o.  
ul. Łukasieńskiego 116  
71-215 Szczecin, Poland  
www.westcondesign.com





BERGEN MEKANISKE VERKSTED AS



#### Selected references:

Bergen Mekaniske Verksted, Norway:

- » workshop documentation (hull and machinery)
- » workshop documentation, including outfitting 3D coordination (seismic vessel)
- » workshop documentation of hull and engine room 3D coordination (ROV/Construction vessel)
- » workshop documentation of hull structure (Diving Support Vessels)

B.V. Kustvaartbedrijf Moerman, The Netherlands:

- » contractual and classification documentation for 7600 dwt Multipurpose Carrier

Europlan Engineering Ltd., Finland:

- » 3D model and workshop documentation of AC Rooms (passenger vessel)

Fjellstrand AS, Norway:

- » workshop documentation of flying cats/catamarans

Stocznia Gdańsk SA, Poland:

- » supervision of hull construction and piping (seismic vessel)

Groot Ship Design, The Netherlands:

- » FEM calculations of hull structure, hull classification documentation of 13.500 dwt multi purpose vessel

Heerema Marine Contractors, The Netherlands:

- » calculations and classification documentation (conversion one of the largest ocean going launch/cargo barge H-851)

Lloyd's Register EMEA, England:

- » long term cooperation

Mostostal Chojnice SA, Poland / AS Nymo, Norway:

- » structure and outfitting workshop documentation of Sevan 650 Drilling Unit

Project Żegluga Sp. z o.o., Poland:

- » conversion study of floating crane DP 6

Seatrade Groningen BV, The Netherlands:

- » classification documentation for diesel generators replacement, for six vessels
- » modifications required for live car transport onboard of reefer vessel

Spliethoff's Bevrachtingskantoor B.V. The Netherlands:

- » strength analysis of decks on conro vessel

KIL, Poland:

- » 20.000 dwt floating dock feasibility study

Aker Wismar, Germany:

- » work at client premises, LNG concept design

Deltamarin, Finland:

- » work at client premises, workshop documentation for car carrier and passenger vessel
- » workshop documentation for Pieter Schelte vessel

Fosen Yards, Norway:

- » 3D model and workshop documentation for offshore vessel

Palmer Johnson, Norway:

- » work at client premises, documentation for supply vessel
- » work at client premises, documentation for 80m motor yacht

PZM, Poland: » ETS (Emergency Towing System for Passenger and Merchant Vessels)

PZM, Poland: » Bulk Carrier CFD Optimization of Hydrodynamic Hull-Propeller-Rudder Interaction for increase of manoeuvrability efficiency at Low ship's speeds.

TALISMAN, Norway: » Project in cooperation with WESTCON. Verification of 7 thousands ISO drawings of Piping systems made for Mobile Offshore Production Unit at YME field in Abu Dhabi.

#### Key Services

Our four departments (Stability and Strength, Hull Structure Department, Machinery and Outfitting, Electrical and Automation) are available to provide following services for offshore and shipbuilding industry:

- » feasibility studies, outline specifications
- » preparation of documentation of all design stages,
- » assistance in model tests,
- » theoretical calculations, hydrostatics, stability, damage stability,
- » hull structure design, including strength calculations with FEM,
- » deck equipment, interior outfitting, machinery and piping systems, electric systems and auto controls, including coordination and material list,
- » 3D modeling & design visualization,
- » technical assistance in maker selection process,
- » technical assistance in documentation approval process,
- » technical assistance during construction, dock trials and sea trials of designed object,
- » ship repair, conversions design and assistance,
- » consulting in solving technical problems of vessels in service.

