

MF Nesvik



MF Nesvik – 82,4 m Car Ferry delivered in March 2021 by Westcon Yards AS, Ølensvåg, Norway as Yard no. 37 to ship-owner Norled AS in Stavanger. The design is by LMG Marine, Norway; LMG 80-DEH₂. The vessel is built as a battery/diesel hybrid plug-in car & passenger ferry

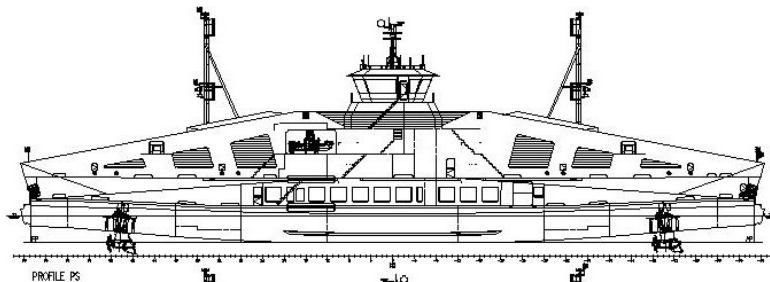
Principal particulars

Length o.a.:	82,4 m
Length p.p:	80,2 m
Breadth Extreme :	17,5 m
Draught Max:	2,9 m
Class:	1A Car Ferry B Battery (Power) E0 LC R4(Nor)
Flag:	NOR, NMA Passenger Vessel for Trade Area 2

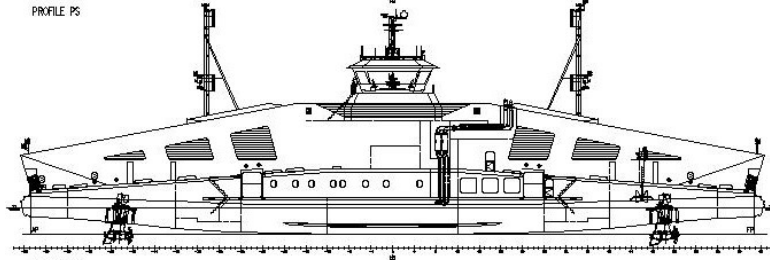
Contact:

Westcon Yards AS
Jektevikvegen 45
NO-5582 Ølensvåg, Norway
Tel: +47 53 77 50 00
E-mail: westcon@westcon.no

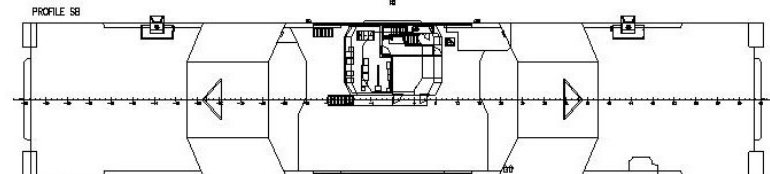
www.westcon.no



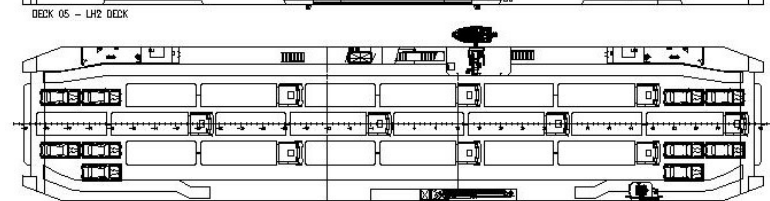
PROFILE PS



PROFILE SB



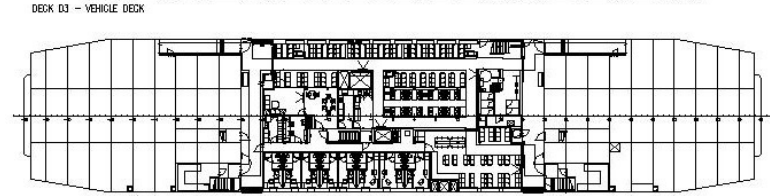
DECK 05 - LH2 DECK



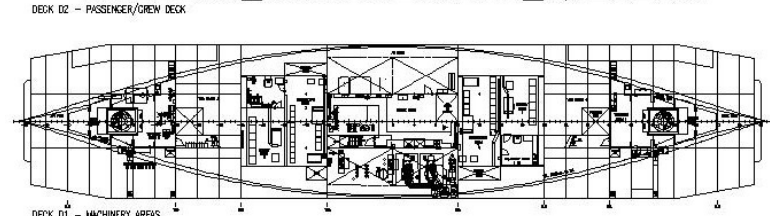
DECK 04 - TWEEN DECK



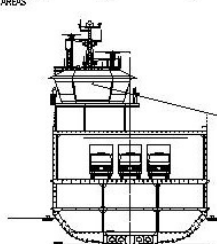
DECK 03 - VEHICLE DECK



DECK 02 - PASSENGER/CREW DECK



DECK 01 - MACHINERY AREAS



TYPICAL MIDSHIP SECTION



DECK 06 - BRIDGE DECK

Propulsion system

Propeller system: Schottel Rudder Propeller: SRE 340 L FP

Generators

Main generators: Scania DI16 75M/Stamford
HCM634G2 480-553 kW 2250 rpm

Electronical equipment

Radar 1: Furuno radar FAR-2318 BB
Radar 2: Furuno radar FAR-2238S BB/PM
Echosounder: Furuno FE-800

Navitex: Furuno NX-700B
BNWAS: Furuno BR-500
Camera: Ocean Electronics AS
GPS compass: Simrad MX575
Gyro: Simrad GC80
Log: Furuno DS-80 Doppler log, Furuno GS100 satellite speed log

GPS: Furuno DGPS GP-170/GPA021S
AIS: FURUNO FA-170 U-AIS KLASSE A
ECSIS: Furuno Tecdis T-2138B
VHF GMDSS: Furuno FM-8900S
UHF: Mototrb DM4400
Autopilot: Simrad AP70 MKII
Monitors: Hatteland
Epirb: Tron 60S

Ship systems

Complete system integration Westcon Power & Automation:

e-SEAMatic® BLUE
e-SEAMatic® EMS - Energy Management system
e-SEA® Bridge - Integrated bridge
e-SEAMatic® IAS - Integrated Automation System
e-SEAMatic® EPMS - Energy- and Power Management system
e-SEA® Drive - Power conversion
e-SEA® Motor - Electrical motors
e-SEA® Switchboards - Main Switchboards
e-SEA® Motor - Electrical motors

Battery System Westcon Power & Automation

Vent/AC-arrangement: Novenco AS
Fans: Novenco AS
Engine room firefighting: Survitec FIFI system, water mist & foam
Mob boat: Palfinger RSQ 450 G 25HP
MES: Survitec
Life rafts: Survitec type ORIL151V (3)
Searchlights: Glamox SL40 R5 1000W
Fire alarm: Consilium Salvico Cargo AE

Capacities

Cars: 80
Trucks: 10
Pax: 299 (including crew)
Biofuel: 21,6 m³
Fresh water: 20,7 m³
Accommodation: 8 off

Deck equipment

Anchor wire winch: Adria Winch
Capstan: Adria Winch