

# MF Hydra



**MF Hydra – 82,4 m Car Ferry delivered in June 2021 by Westcon Yards AS, Ølensvåg, Norway as Yard no. 38 to ship-owner Norled AS in Stavanger. The design is by LMG Marine, Norway; LMG 80-DEH<sub>2</sub>. The vessel is built as a battery/ hydrogen/ diesel hybrid plug-in car & passenger ferry**

## Principal particulars

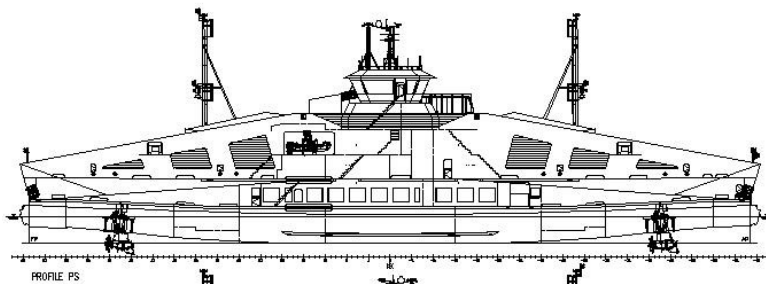
Length o.a.:	82,4 m
Length p.p:	80,2 m
Breadth Extreme :	17,5 m
Draught Max:	2,9 m
Class:	1A Car Ferry B Battery (Power) E0 LC R4(Nor)
Flag:	NOR, NMA Passenger Vessel for Trade Area 2

## Contact:

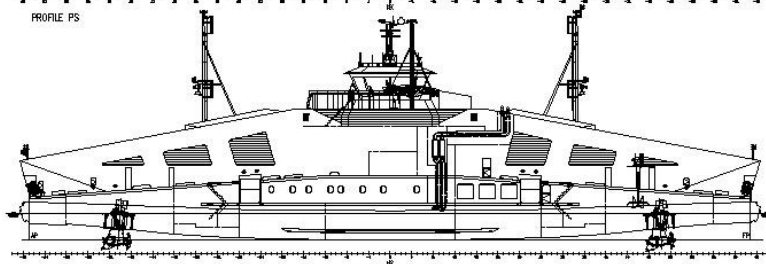
Westcon Yards AS  
Jektevikvegen 45  
NO-5582 Ølensvåg, Norway  
Tel: +47 53 77 50 00  
E-mail: [westcon@westcon.no](mailto:westcon@westcon.no)

**[www.westcon.no](http://www.westcon.no)**

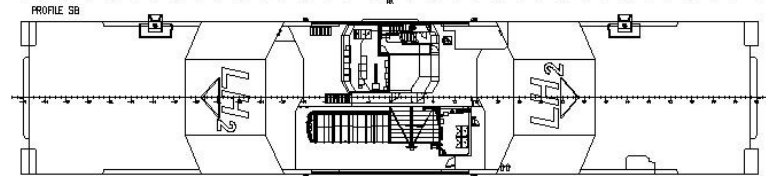
This document is the sole property of Westcon AS. It contains proprietary information and is not to be used for any purpose other than the purpose for which it is given to you, without the written consent of Westcon AS



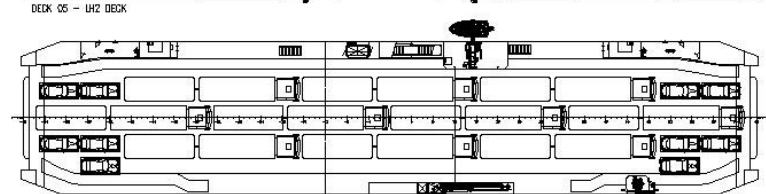
PROFILE PS



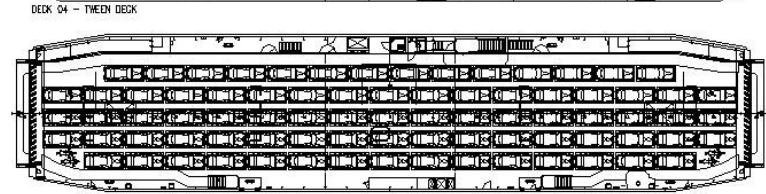
PROFILE SB



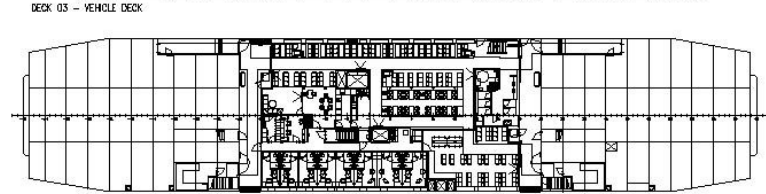
DECK 05 - LH2 DECK



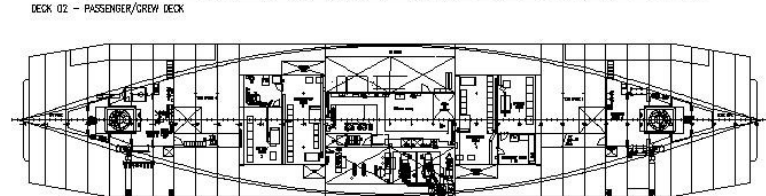
DECK 04 - TWEEN DECK



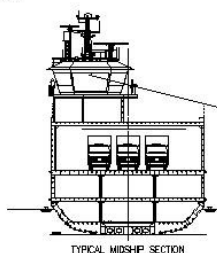
DECK 03 - VEHICLE DECK



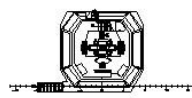
DECK 02 - PASSENGER/CREW DECK



DECK 01 - MACHINERY AREAS



TYPICAL MIDSHIP SECTION



DECK 06 - BRIDGE DECK

## Propulsion system

Propeller system: Schottel Rudder Propeller: SRE 340 L FP

## Generators

Main generators: Scania DI16 75M/Stamford  
HCM634G2 480-553 kW 2250 rpm

## Electronical equipment

Radar 1: Furuno radar FAR-2318 BB  
Radar 2: Furuno radar FAR-2238S BB/PM  
Echosounder: Furuno FE-800

Navitex: Furuno NX-700B  
BNWAS: Furuno BR-500  
Camera: Ocean Electronics AS  
GPS compass: Simrad MX575  
Gyro: Simrad GC80  
Log: Furuno DS-80 Doppler log, Furuno GS100 satellite speed log

GPS: Furuno DGPS GP-170/GPA021S  
AIS: FURUNO FA-170 U-AIS KLASSE A  
ECSIS: Furuno Tecdis T-2138B  
VHF GMDSS: Furuno FM-8900S  
UHF: Mototrobo DM4400  
Autopilot: Simrad AP70 MKII  
Monitors: Hatteland  
Epirb: Tron 60S

## Ship systems

Complete system integration Westcon Power & Automation:

e-SEAMatic® BLUE  
e-SEAMatic® EMS - Energy Management system  
e-SEA® Bridge - Integrated bridge  
e-SEAMatic® IAS - Integrated Automation System  
e-SEAMatic® EPMS - Energy- and Power Management system  
e-SEA® Drive - Power conversion  
e-SEA® Motor - Electrical motors  
e-SEA® Switchboards - Main Switchboards  
e-SEA® Motor - Electrical motors

Battery System Westcon Power & Automation

## Hydrogen System

Hydrogen tank Linde  
Hydrogen cell Ballard  
Automation System Westcon Power & Automation

## Vent/AC-arrangement:

Fans: Novenco AS  
Engine room firefighting: Novenco AS  
Mob boat: Survitec FIFI system, water mist & foam  
MES: Palfinger RSQ 450 G 25HP  
Life rafts: Survitec  
Searchlights: Survitec type ORIL151V (3)  
Fire alarm: Glamox SL40 R5 1000W  
Consilium Salwico Cargo AE

## Capacities

Cars: 80  
Trucks: 10  
Pax: 299 (including crew)  
Biofuel: 21,6 m³  
Fresh water: 20,7 m³  
Accommodation: 8 off

## Deck equipment

Anchor wire winch: Adria Winch  
Capstan: Adria Winch