



Formosa



Perry Homes

Formosa 25



DESIGNER - 236.78m² / 25.49sq

DESIGNER PLUS - 238.86m² / 25.71sq



DESIGNER

Width: 11.51m

Depth: 21.36m

Area Sizes

Living Total	180.50m ²
Garage	38.00m ²
Porch	2.88m ²
Terrace	15.40m ²

Total Area 236.78m² / 25.49sq

DESIGNER PLUS

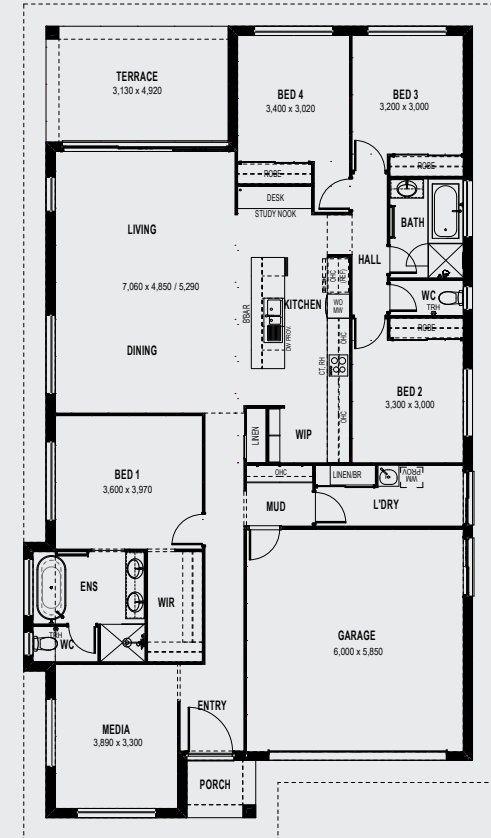
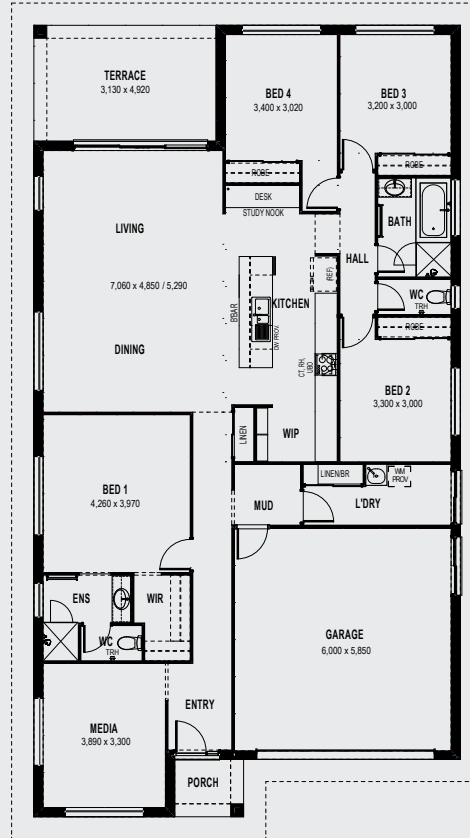
Width: 12.11m

Depth: 21.36m

Area Sizes

Living Total	182.58m ²
Garage	38.00m ²
Porch	2.88m ²
Terrace	15.40m ²

Total Area 238.86m² / 25.71sq



Perry Homes

Built to inspire. Built for you.



Perry Homes (Aust.) Pty Ltd, 49 Minjungbal Drive, Tweed Heads South, NSW 2486

Phone: (07) 5569 9400 perryhomes.com.au



Images, plans and dimensions in this brochure, do not necessarily accurately depict the finished product as on display. Some images may show features which are not supplied by Perry Homes, or outside our standard range, but have been used for display purposes only. Plans, prices and inclusions are subject to variation without notice. Dimensions are approximate only. For more details please consult with your sales consultant. The copyright on all floor plans is owned by Perry Homes (Aust.) Pty Ltd. These floor plans may not be reproduced, copied or dealt with in any manner which infringes the exclusive rights of Perry Homes (Aust.) Pty Ltd. as prescribed by the Copyright Act 1968 without the express written authorisation of Perry Homes (Aust.) Pty Ltd. © Perry Homes (Aust.) Pty Ltd ABN 53 090 866 630. NSW Lic. No. 110970C. QBCC Act Lic. No. 718748. September 2024. E34458