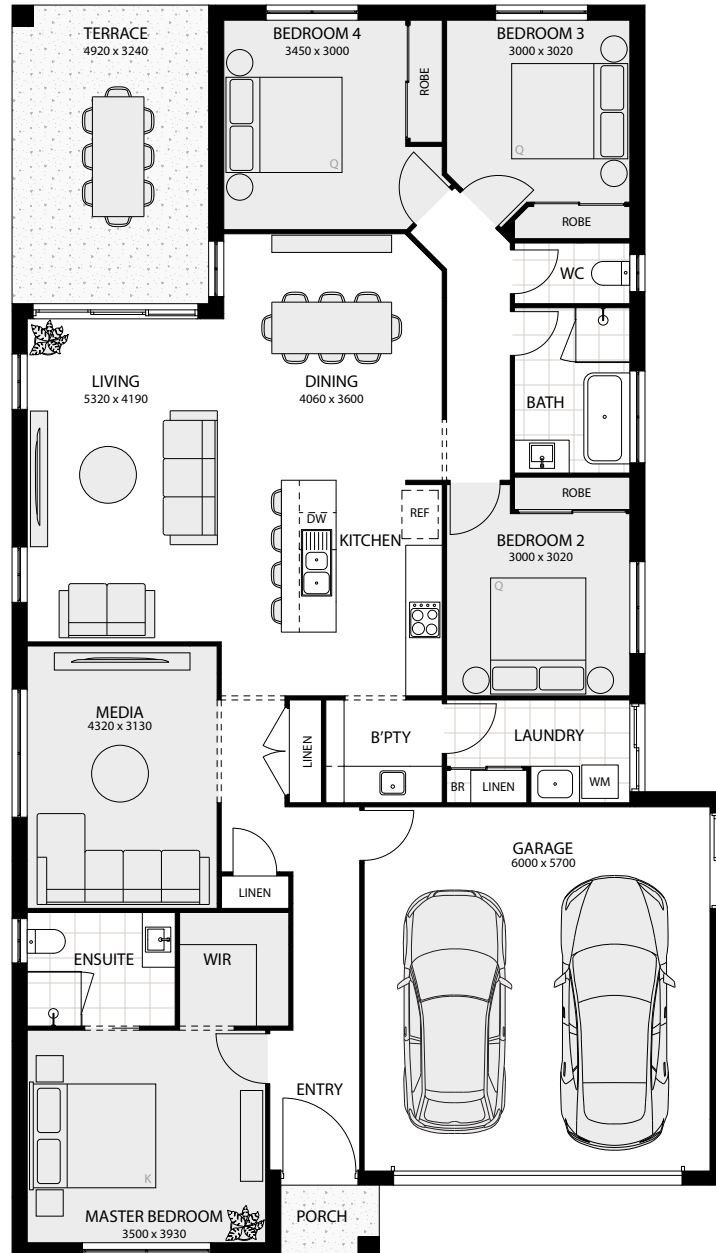




# Balmoral

# Balmoral 24

 4 | 
  2 | 
  2 | 
  2



## Designer

Width: 11.75m    Depth: 20.64m

## Area Sizes

Living Total                    163.29m<sup>2</sup>  
 Garage                            37.40m<sup>2</sup>  
 Porch                              1.94m<sup>2</sup>  
 Terrace                            15.94m<sup>2</sup>

TOTAL AREA            218.57m<sup>2</sup> / 23.53sq

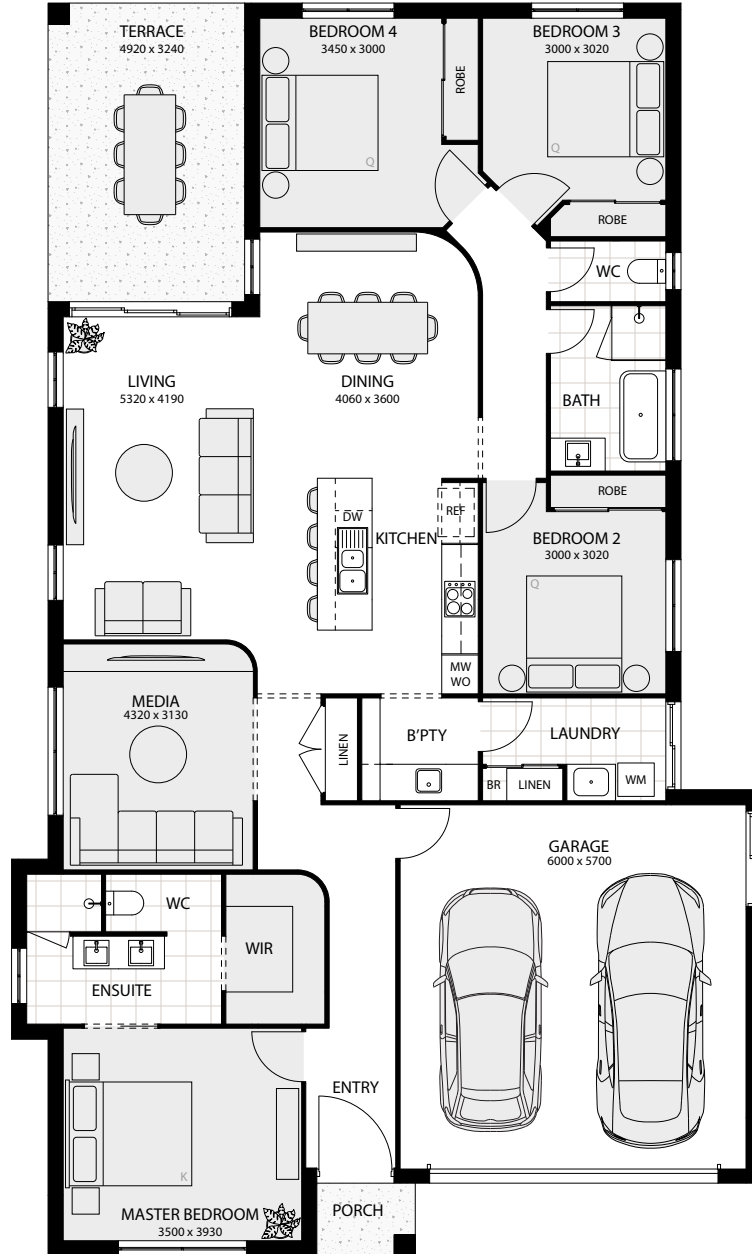
Phone: (07) 5569 9400 / [enquiries@perryhomes.com.au](mailto:enquiries@perryhomes.com.au) / [perryhomes.com.au](http://perryhomes.com.au)



**Perry Homes**

Built to inspire. Built for you.

# Balmoral 24+



## Designer Plus

Width: 12.35m    Depth: 20.64m

## Area Sizes

Living Total	165.07m <sup>2</sup>
Garage	37.40m <sup>2</sup>
Porch	1.94m <sup>2</sup>
Terrace	15.94m <sup>2</sup>

TOTAL AREA    220.35m<sup>2</sup> / 23.72sq



**Perry Homes**

Built to inspire. Built for you.

Phone: (07) 5569 9400 / [enquiries@perryhomes.com.au](mailto:enquiries@perryhomes.com.au) / [perryhomes.com.au](http://perryhomes.com.au)