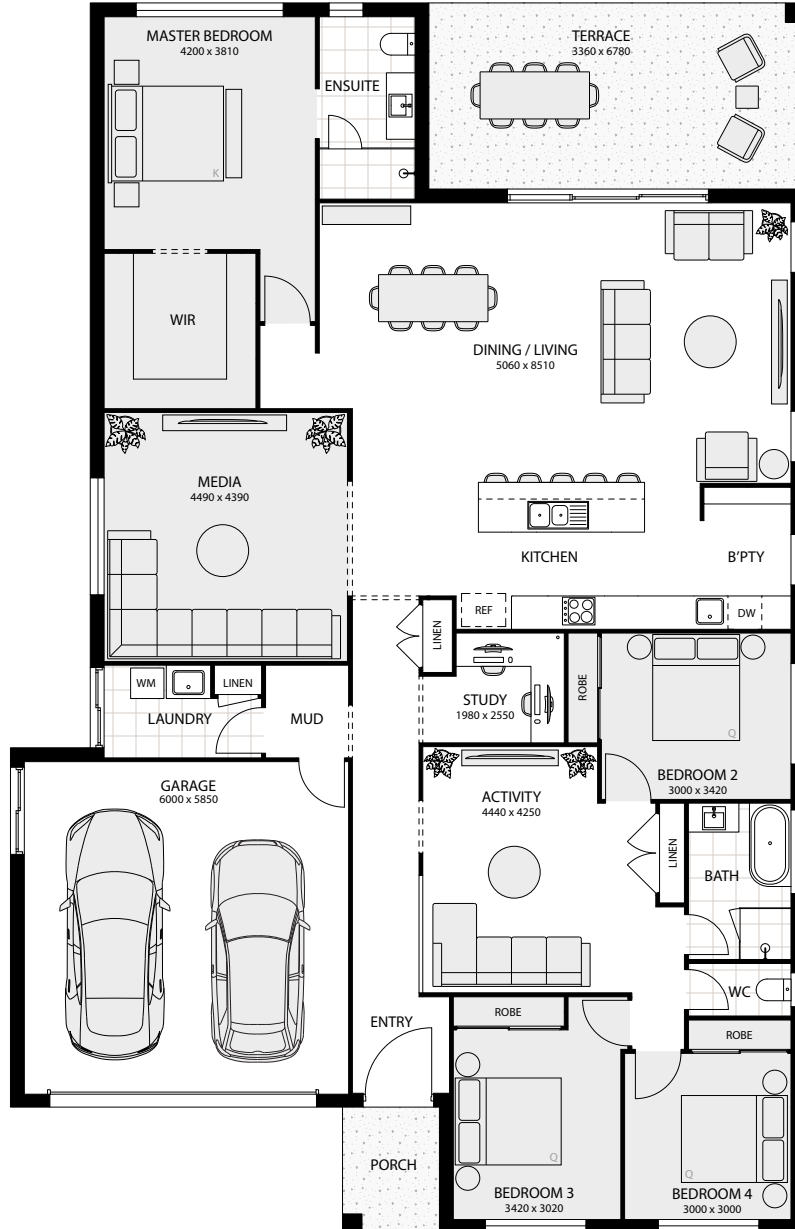




# Hayman

# Hayman 31



## Designer

Width: 14.33m    Depth: 22.20m

## Area Sizes

Living Total	219.98m <sup>2</sup>
Garage	38.36m <sup>2</sup>
Porch	3.99m <sup>2</sup>
Terrace	22.78m <sup>2</sup>

TOTAL AREA    285.11m<sup>2</sup> / 30.69sq

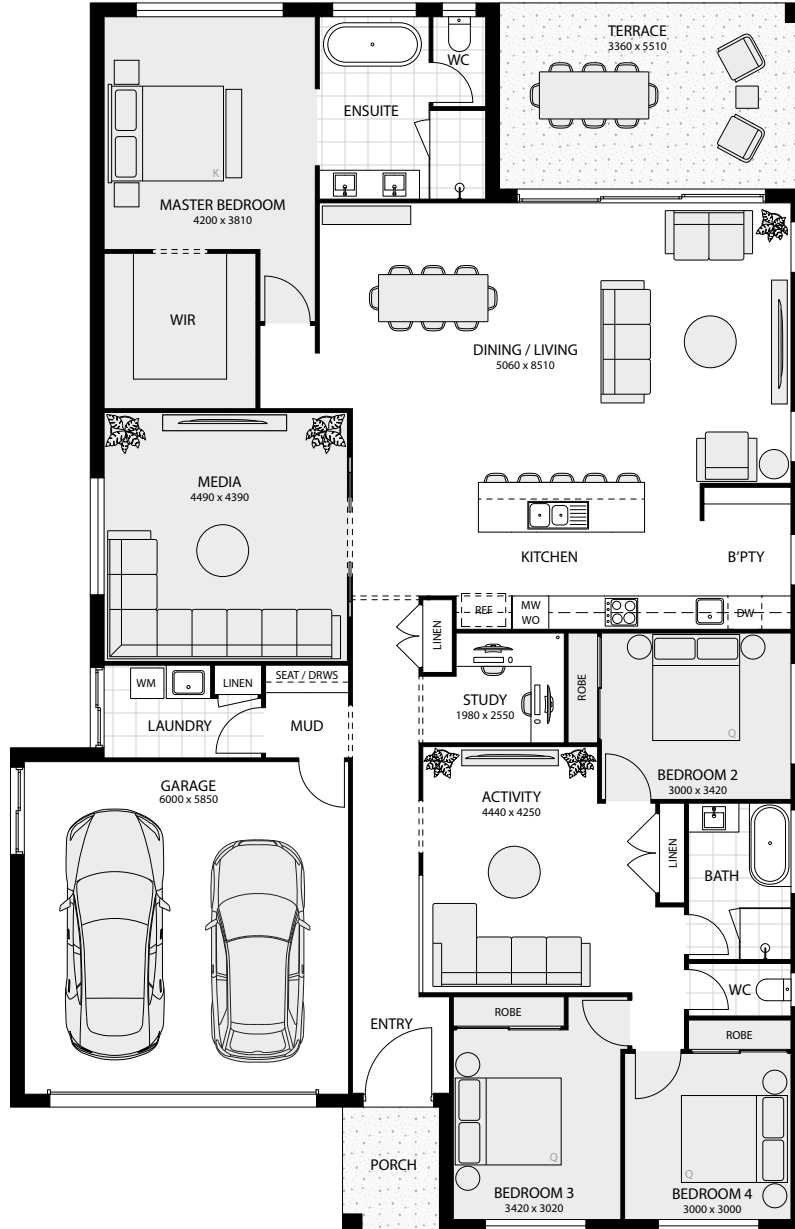
Phone: (07) 5569 9400 / [enquiries@perryhomes.com.au](mailto:enquiries@perryhomes.com.au) / [perryhomes.com.au](http://perryhomes.com.au)



**Perry Homes**

Built to inspire. Built for you.

# Hayman 31+



## Designer Plus

Width: 14.33m    Depth: 22.20m

## Area Sizes

Living Total	223.48m <sup>2</sup>
Garage	39.13m <sup>2</sup>
Porch	3.99m <sup>2</sup>
Terrace	18.51m <sup>2</sup>

TOTAL AREA    285.11m<sup>2</sup> / 30.69sq

Phone: (07) 5569 9400 / [enquiries@perryhomes.com.au](mailto:enquiries@perryhomes.com.au) / [perryhomes.com.au](http://perryhomes.com.au)



**Perry Homes**

Built to inspire. Built for you.