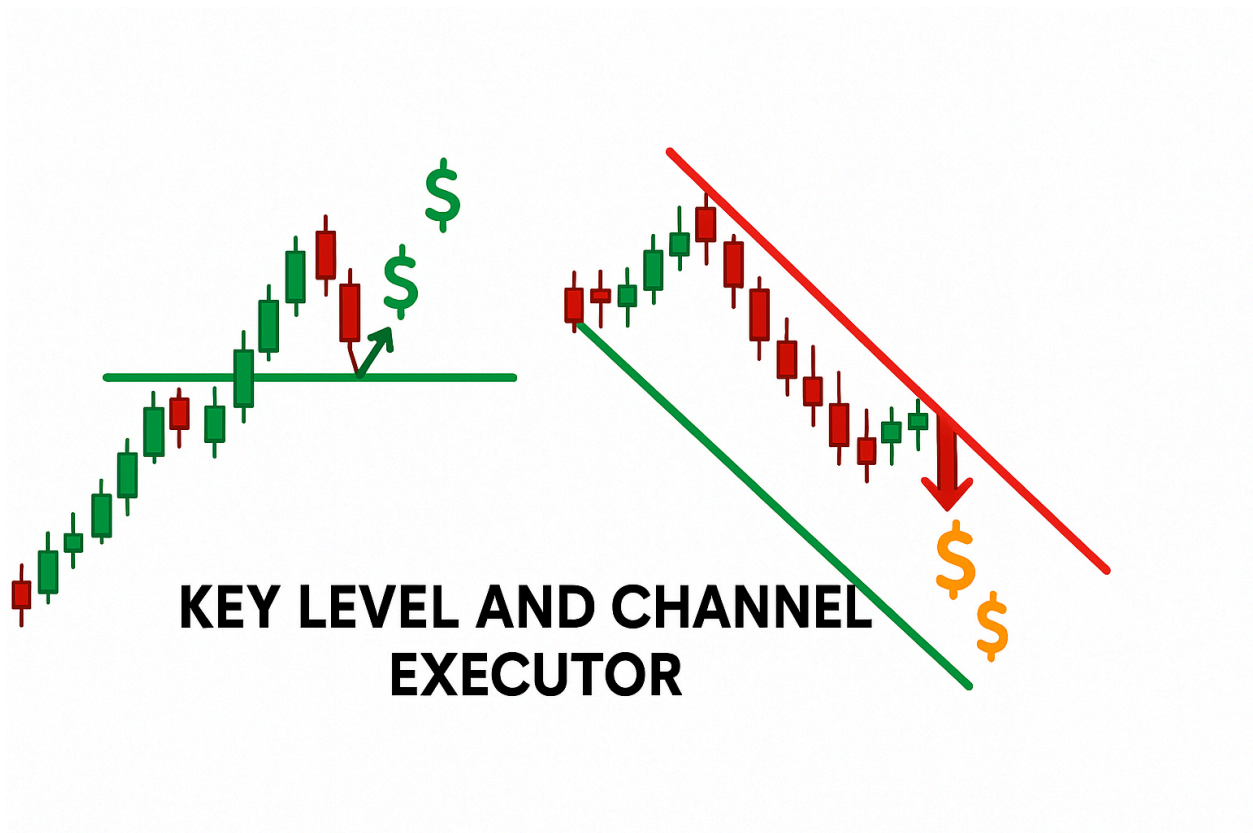


KeyLevel and Channel Executor and Alerters



Alerters

Draw your Key level or Channel on the chart using the trend line drawing tool. (use separate charts for each)

If you are drawing a Key Level

Right-click on the Key_Level Trend line and name it Key_Level_Buy/Sell_01

Example Key_Level_Buy_01

Drag on the Key level Alerter form your indicators, the Alerter will report via Chart Label how many Key levels it has detected. It will then alert you when the price is in the proximity of the Key_Level to your smart phone with all the information, Symbol Timeframe Key_Level_# dta errand time

If you are drawing a Channel, Then Name the Lower Line of the Channel "Channel_Buy_01"

And the upper Line "Channel_Sell_01"

Drag on the Alerter, The Alerter will report via chart label the amount of Channel_Buy and Channel_Sell it has detected on that chart

It will alert you when the price is in the proximity of the Channel line, report all the details to your smartphone

Key_Level and Channel Executor

Drag the Dual executor onto your chart with the Alerter, in the inputs, Select the direction of the trade you are interested in, Buy true/false or Sell true/false
Set the pattern you are trading - Key_Level or Channel
Set your risk % set trade 3 if required, turn off trade 2 if required

The executor will execute trades when the price is within the proximity of your Key level line or channel line

The executor has onboard SL Management - see inputs

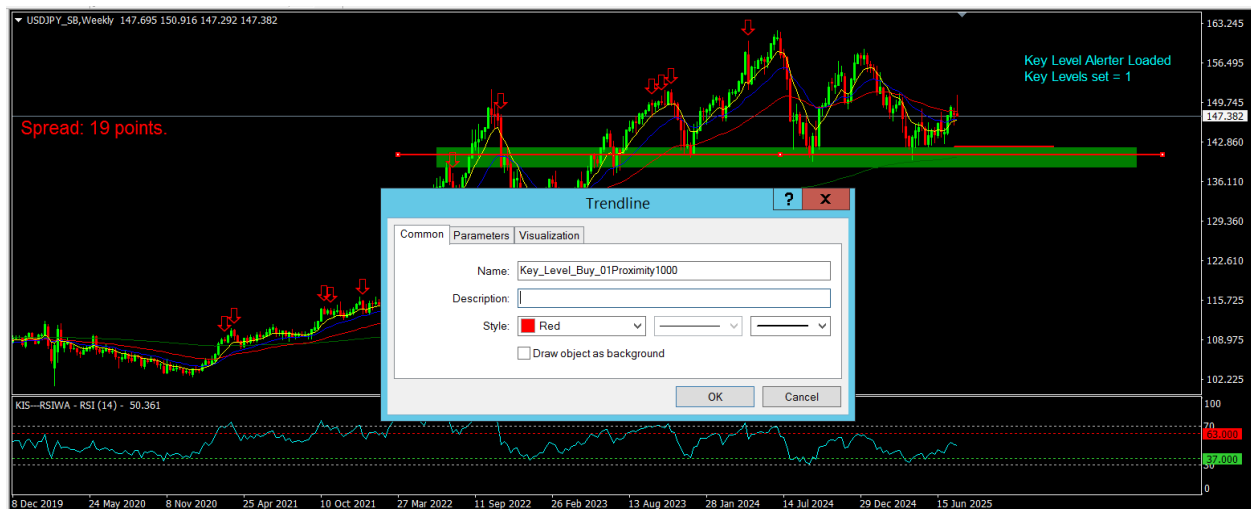
Hints and Tips

For Channel executor, you can select Buy true and sell true. The executor will take the first set-up that comes within proximity; it will ONLY place 1 set of trades per application.

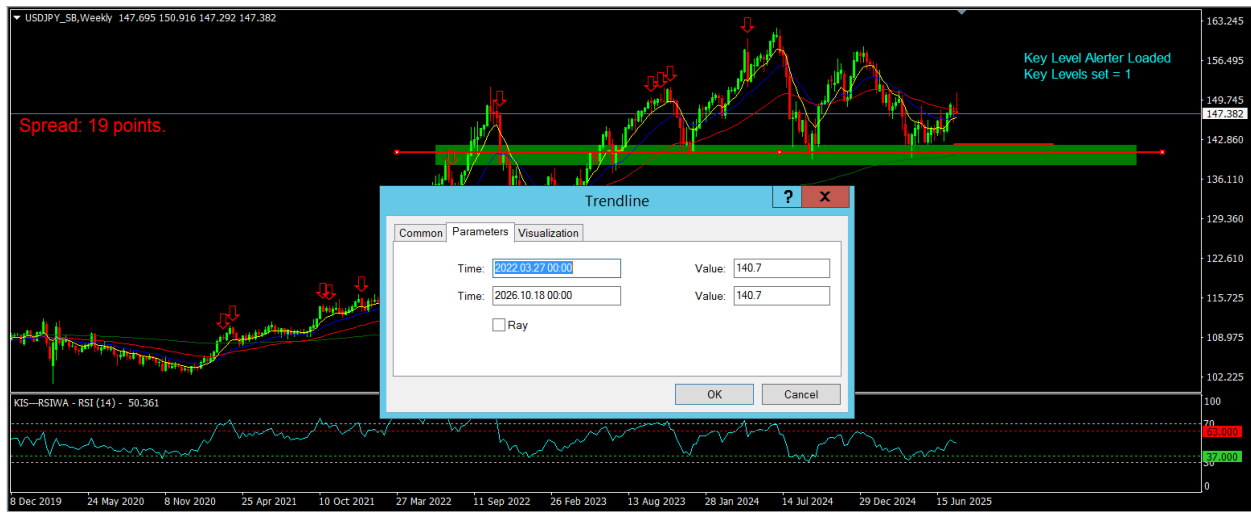
For tight channels on lower time frames, you may wish to turn off Trade 2

For Key_level on a higher time-frame you may wish to turn on Trade 3 to catch a long run

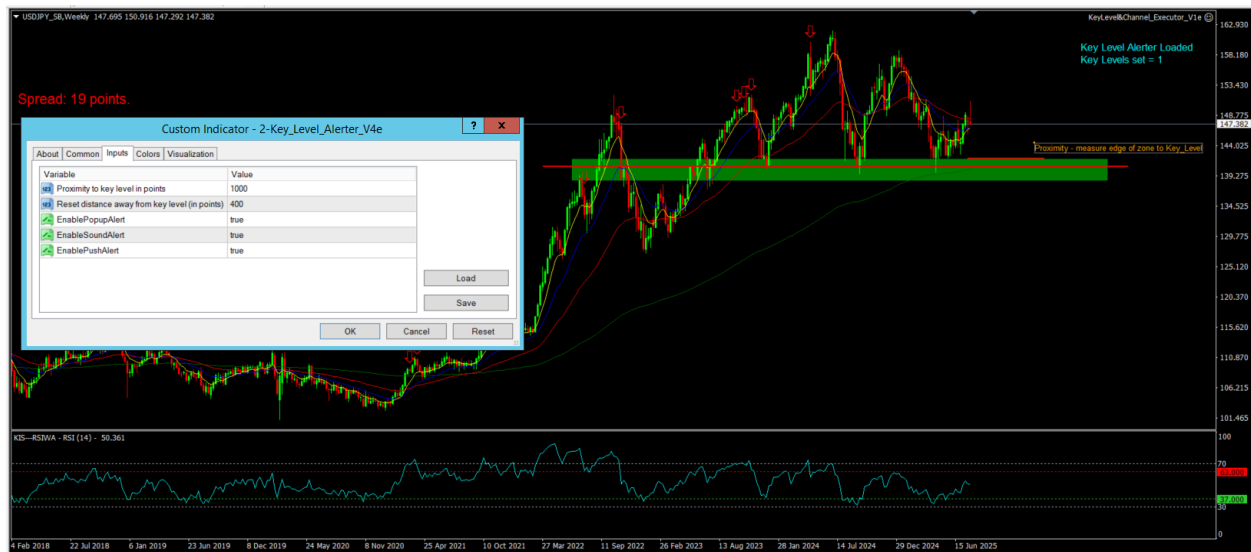
Naming your Key Level line - Drawn by Trend line - In this example, I have noted my Proximity size in the name, which comes through on the Push notification



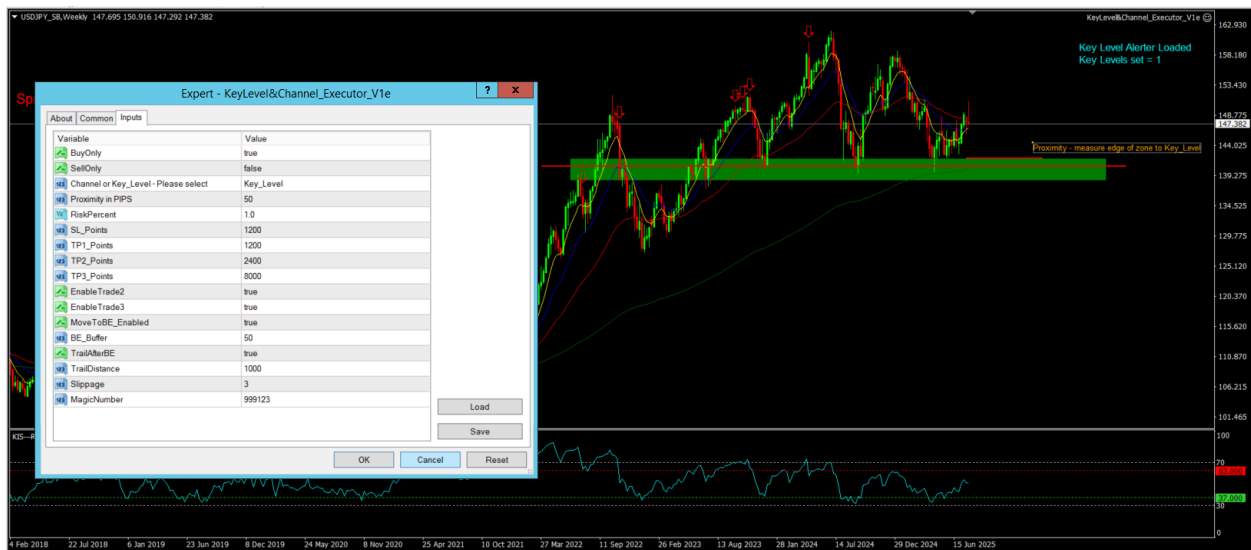
You can set the price exactly for each end of your Key_Level Trendline in Parameters



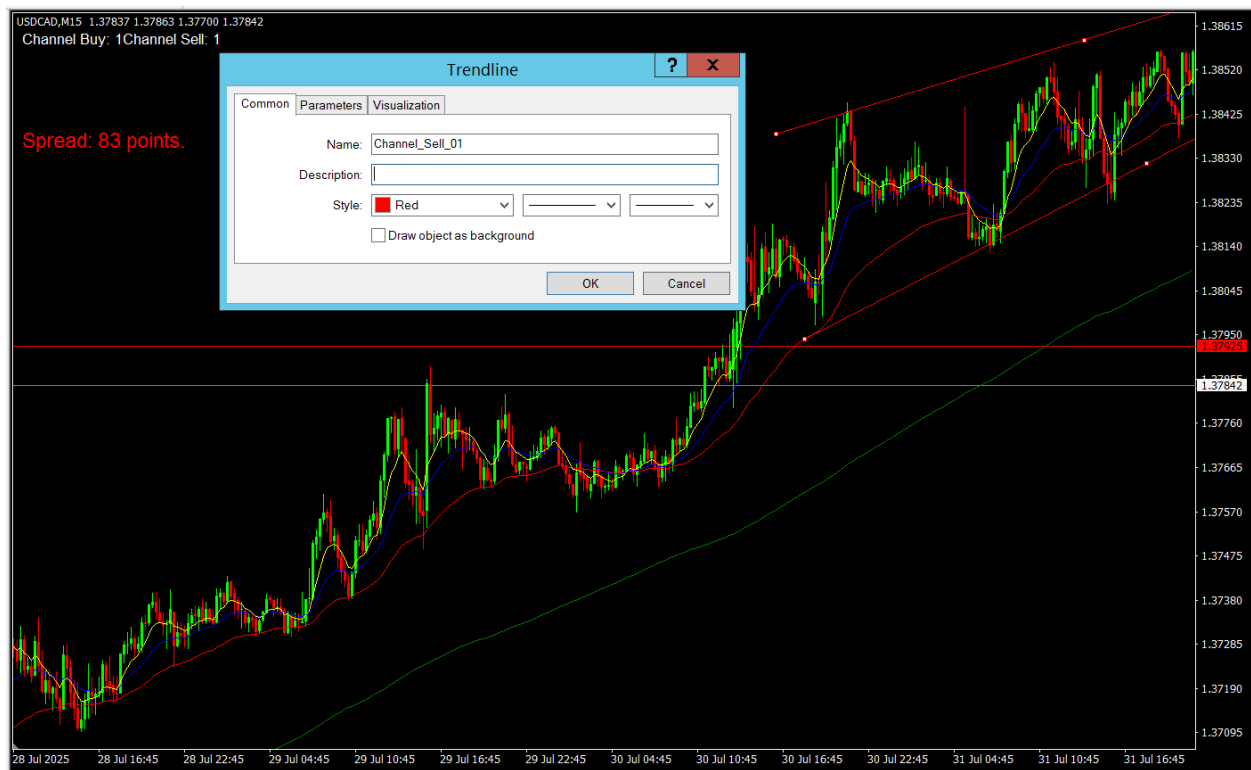
Key_Level_Alerter

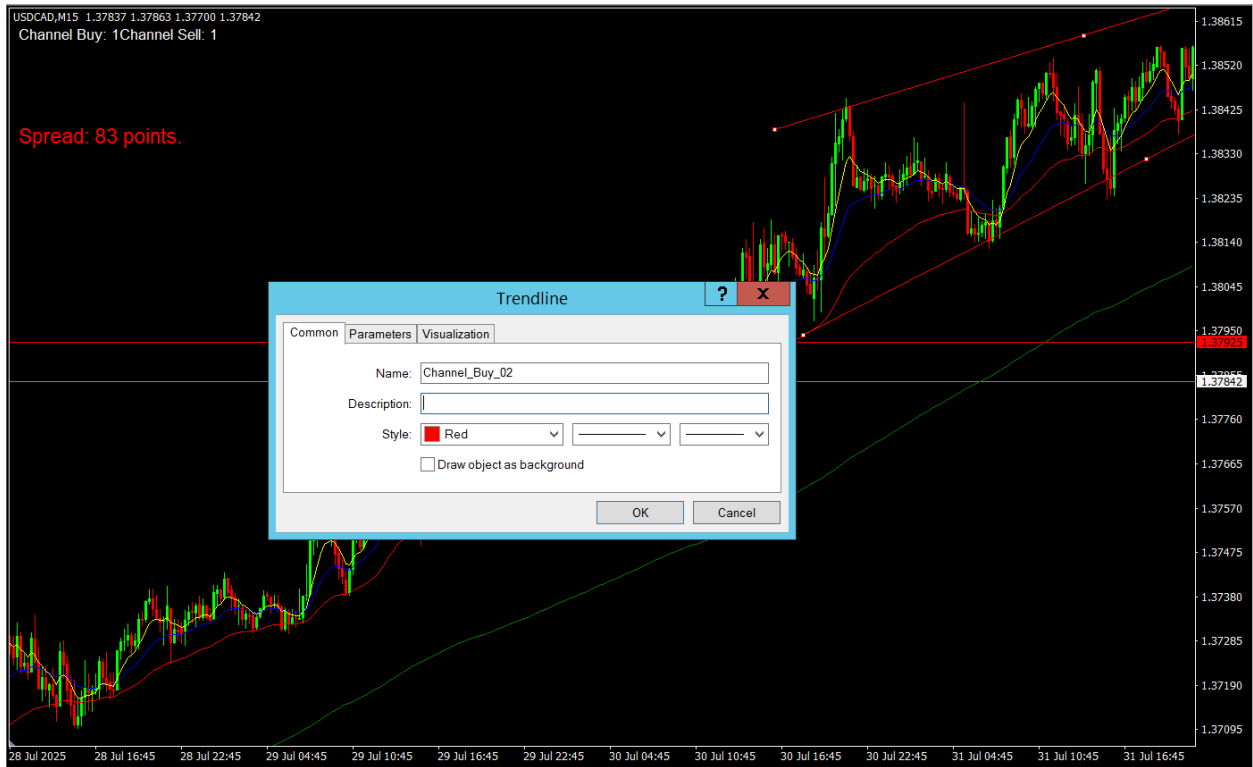


Key_Level_Executor

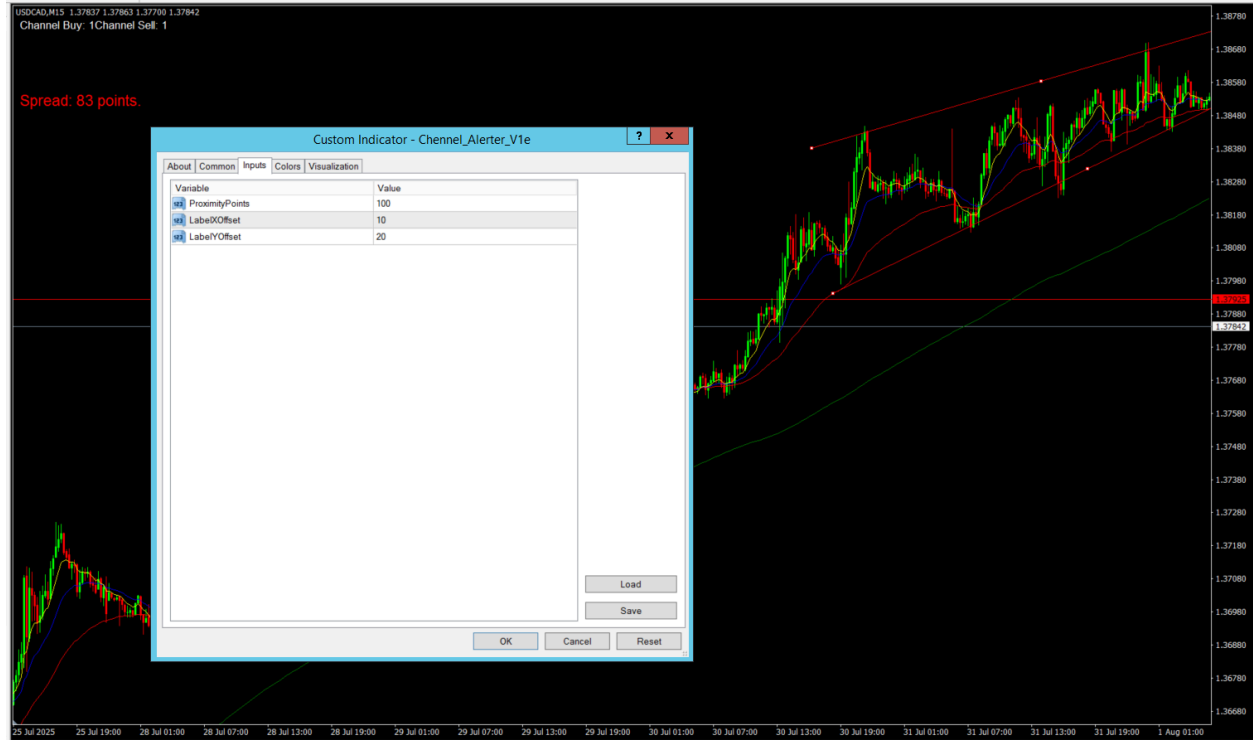


Naming your Channel lines





Channel_Alerter



Channel_Executor

