

# Heavy Duty Low Cost Enclosures

## Technical Specification

Deltron's entry level Heavy Duty Low Cost enclosure is ideal for robust applications where moisture or dust ingress protection is not critical to the performance of the electronics housed inside.

In line with our IP rated Heavy Duty enclosures these are supplied with DIN rail stand-offs, base plate mounting kits and internal earth points.

We also offer a full enclosure build service.

**Full technical specification attached**



**Call us on:**

**Tel: +44 (0)1724 273200**

### Features:

- Supplied complete with lid, captive screws and earth screws
- PCB card guides and stand-offs
- DIN rail mounting points

### Typical Applications:

- Industrial Controls
- Security
- Transportation

### Standard Sizes Available:

125 x 125 x 80	220 x 120 x 80
125 x 125 x 90	220 x 120 x 90
130 x 80 x 60	260 x 160 x 90
160 x 160 x 90	260 x 160 x 120

### Standard Finishes Available:

Plain  
Powder Coated  
Nylon Coated

### DEM Manufacturing

Deltron Emcon House  
Hargreaves Way, Sawcliffe Industrial Park  
Scunthorpe, North Lincolnshire  
DN15 8RF



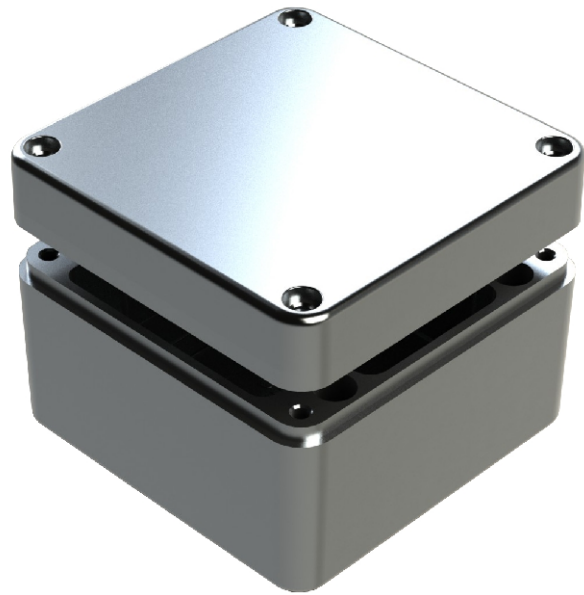
Tel: 44 (0) 1724 273200

Fax: 44 (0) 1724 280353

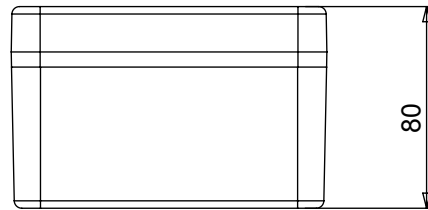
Email: [sales@dem-uk.com](mailto:sales@dem-uk.com)

Web: [www.dem-uk.com/deltron-enclosures](http://www.dem-uk.com/deltron-enclosures)

REV 003	1 DATE 24 Apr 2019	ECN NUMBER CU14181	2 ECR COMMENT REMOVE MADE IN UK, ADD MADE IN CHINA, UPDATE BORDER AND CORRECT TEXT	3	4	5	6	7
------------	--------------------------	-----------------------	--	---	---	---	---	---



WIDTH	LENGTH	HEIGHT	UN-PAINTED	POWDERCOAT	NYLONCOAT
125	125	80	486-121208	487-121208*	488-121208*
<b>Box Dimensions in mm</b>			<b>Colour Options - Colour Suffix *- Grey = A / Blue = B / Black = E</b>		



**DIE CAST ALUMINIUM ENCLOSURE:**

- Min enclosure wall thickness 3mm
- Min enclosure lid thickness 3mm
- PCB maximum dimensions 111mm length 1.7mm width
- Enclosures can be supplied Machined to your specifications
- Made in China.

