

# IP66 General Purpose Enclosures

## Technical Specification

If you require light protection against water ingress, this range could be ideal. With an IP66 seal, this range is dust proof, splash proof, and protects from powerful jets of water, as per BS EN 60529:1992.

15 sizes are available, complete with neoprene gasket, lid screws, and PCB guides on selected sizes. Nine sizes are also available with flanges for easy mounting.

Deltron Enclosures can customise any enclosure in our UK factory, including machining, painting, component sourcing and installation to meet your specification, save time and cut your costs. View our Services page on our website for more information.



**For more information:**

Phone: +44 (0)1724 273200

### Features:

- IP66 Rated
- Manufactured from ADC12
- Certified to BS EN 60529:1992
- RoHS Compliant
- Neoprene Seal

### Typical Applications:

- Test & Measurement Instrumentation
- Medical Tools
- Transportation Equipment
- Industrial Controls
- Lighting Applications

### Available Dimensions (mm):

|                 |                           |
|-----------------|---------------------------|
| 90 x 36 x 30*   | 115 x 64 x 30*            |
| 115 x 90 x 55*  | 115 x 65 x 55*            |
| 172 x 121 x 55* | 172 x 121 x 106*          |
| 223 x 147 x 55* | 223 x 147 x 106           |
| 275 x 176 x 65  | 141 x 102 x 76*           |
| 166 x 128 x 76  | 121 x 101 x 35*           |
| 251 x 251 x 99  | 81 x 56 x 25              |
| 61 x 56 x 30    | *= Available with Flanges |

**Finishes:** Plain Aluminium, Powder or Nylon coat.

**Coating Colours:** Grey, Blue or Black.

**Spares:** Gaskets and Screws.

Or choose to have your enclosure customised for bespoke finishes and colours.

**DELTRON** Enclosures 

### DEM Manufacturing

Deltron Emcon House,  
Hargreaves Way,  
Sawcliffe Industrial Park,  
Scunthorpe, DN15 8RF.

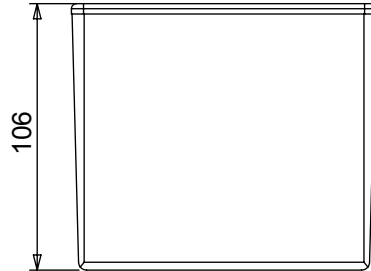
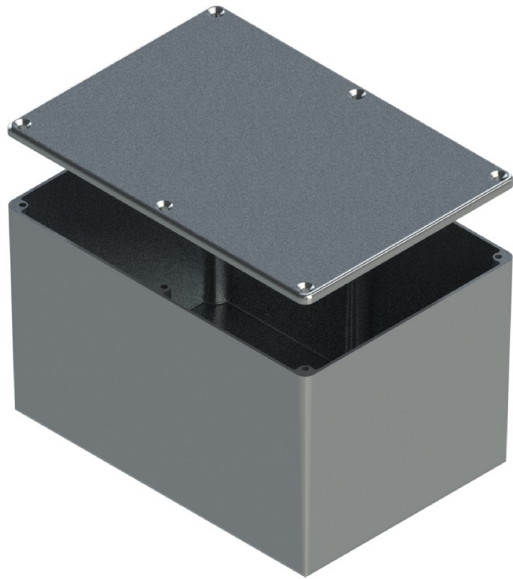
Web: [www.dem-uk.com/deltron-enclosures](http://www.dem-uk.com/deltron-enclosures)

Tel: +44 (0)1724 273200

Email: [sales@dem-uk.com](mailto:sales@dem-uk.com)

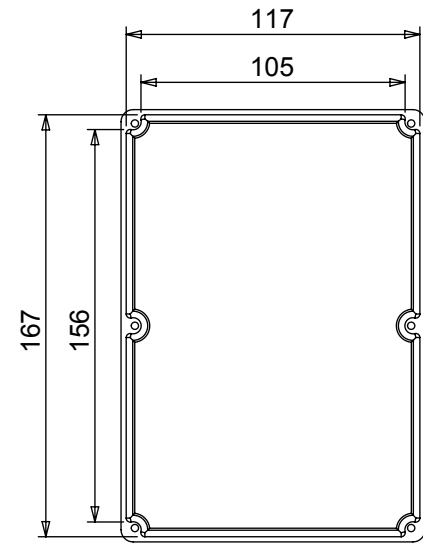
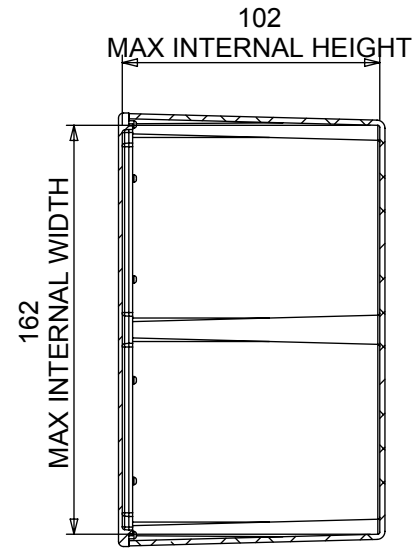
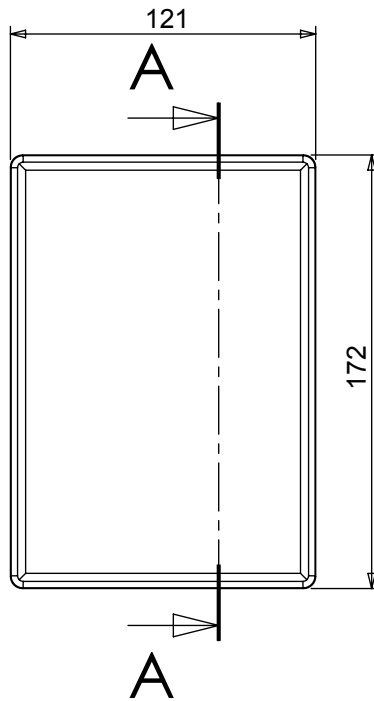
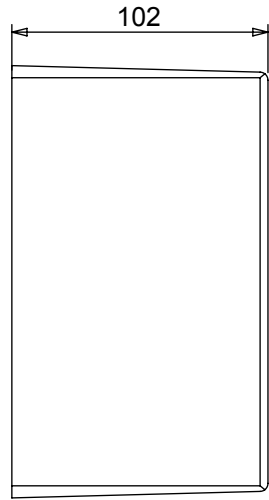
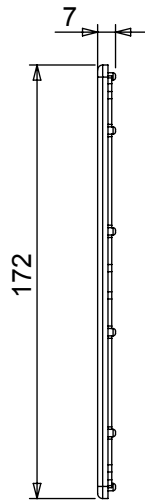
| REV | DATE        | ECN NUMBER | ECR COMMENT           |
|-----|-------------|------------|-----------------------|
| 010 | 06 Jun 2017 | C03614     | BORDER CHANGE         |
| 009 | 06 Jun 2017 | C03614     | TORQUE SETTINGS ADDED |

| LENGTH              | WIDTH | HEIGHT | SEAL  | TORQUE SETTINGS | PLAIN    | POWDER COAT | NYLON COAT |
|---------------------|-------|--------|---|-----------------|----------|-------------|------------|
| 172                 | 121   | 106    | NONE  | NONE            | 459-0060 | 461-0060*   | 462-0060*  |
|                     |       |        | IP66  | 0.3Nm           | 460-0060 | 453-0060*   | 454-0060*  |
|                     |       |        | IP68  | 0.7Nm           | 480-0060 | 481-0060*   | 482-0060*  |
|                     |       |        | IP68 EMI/RFI  | 1.0Nm           | 480-C060 | 481-C060*   | 482-C060*  |
| BOX DIMENSION IN MM |       |        | COLOUR OPTION - COLOUR SUFFIX * GREY=A / BLUE=B / BLACK = E |                 |          |             |            |



**STANDARD DUTY ENCLOSURE**

- Material grade ADC12/LM2 Die Cast Alloy
- IP Rated available
- Min wall thickness 1.5mm
- Min lid thickness 1.5mm
- Fine textured powder coating and smooth nylon
- Screws stainless steel
- IP68 Tested to 5 metres for 1 hour
- Enclosures can be supplied fully factory customised to your specification



**SECTION A-A**