

Dexodus AI: The Intelligence Layer for the Autonomous DeFi Economy

TL;DR

General-purpose Large Language Models (LLMs) like GPT-4 are unsuitable for the complex, high-stakes environment of decentralized finance (DeFi). They suffer from a "precision deficit" (hallucinating incorrect information), "prohibitive latency" (being too slow for time-sensitive transactions), and "unsustainable economics" (being too expensive to run at scale).

Dexodus AI solves this by building purpose-built Specialized Language Models (SLMs) specifically for DeFi. Our approach is based on three pillars:

- **Unmatched Precision:** Our models are fine-tuned on a proprietary, DeFi-native Knowledge Graph, drastically reducing hallucinations and ensuring high factual accuracy.
- **Mission-Critical Performance:** By specializing our models, they are smaller and faster, enabling them to act on time-sensitive on-chain opportunities.
- **Superior Profitability:** Our efficient SLMs make it economically viable to deploy thousands of autonomous AI agents, unlocking automation at scale.

Our architecture uses a decentralized stack for data processing and model training and ensures absolute user privacy and IP protection through Confidential Computing and Trusted Execution Environments (TEEs). Dexodus AI is building the foundational, secure intelligence layer for the future autonomous DeFi economy.

Introduction: The Intelligence Chasm in Decentralized Finance

The landscape of decentralized finance (DeFi) is undergoing a profound transformation. The initial era, characterized by manual interaction with protocols, is rapidly giving way to a more sophisticated, automated paradigm. We are at the dawn of the agentic era, where autonomous AI agents are poised to execute complex financial strategies—including arbitrage, liquidity provision, yield farming, and dynamic risk management—with a speed and complexity far exceeding human capabilities. This evolution is already evident in the billions of dollars in total value locked (TVL) within automated yield and liquidity management protocols [3]. This evolution promises a future of hyper-efficient markets and novel financial instruments. However, this vision is currently constrained by a critical bottleneck: a fundamental gap in the intelligence infrastructure required to power these agents.

This "Intelligence Chasm" stems from the misapplication of general-purpose Large Language Models (LLMs), such as GPT-4 or Llama, to the highly specialized domain of DeFi. While these models have demonstrated remarkable capabilities in broad conversational and creative tasks, their architectural design renders them fundamentally unsuitable for the mission-critical demands of decentralized finance. Their limitations manifest in three critical failure modes:

- **The Precision Deficit:** General-purpose models are trained on vast, undifferentiated internet corpora. When confronted with the intricate and ever-evolving semantics of DeFi protocols, smart contracts, and tokenomics, they often "hallucinate," producing plausible-sounding but factually incorrect or dangerously misleading outputs. In a domain where a single error in interpreting a smart contract function or a liquidity pool's parameters can result in catastrophic capital loss, this lack of verifiable precision is an unacceptable liability.

- **Prohibitive Latency:** In DeFi, many high-value opportunities are extremely time-sensitive. Arbitrage windows, liquidation events, and optimal liquidity provision moments can be fleeting. The computational overhead and sheer size of general-purpose LLMs result in high inference latency, making them too slow for the 'mission-critical speed' required for effective on-chain execution. An agent powered by such a model would consistently miss time-sensitive opportunities, rendering it ineffective and unprofitable.
- **Unsustainable Economics:** The operational cost of running large, general-purpose models is prohibitively expensive for the high-volume, 24/7 operations demanded by an autonomous financial agent. The economic model of paying per token for a massive, inefficient model does not scale. Making the mass deployment of thousands, or even millions, of DeFi agents economically viable requires a radically different approach to computational cost.

Dexodus AI was founded to bridge this chasm. It is not an attempt to create a slightly better generalist model. Instead, Dexodus AI provides the purpose-built intelligence engine—the core "brain"—specifically engineered for the autonomous DeFi agent economy. By delivering unparalleled precision, mission-critical speed, and superior cost-efficiency, Dexodus AI provides the foundational intelligence layer necessary to unlock the full, transformative potential of autonomous decentralized finance.

The Dexodus Paradigm: Precision, Performance, and Profitability

To overcome the inherent limitations of general-purpose AI, Dexodus AI is built upon a paradigm of domain-specific excellence. Our approach is centered on three interdependent pillars that form a virtuous cycle: Unmatched Precision, Mission-Critical Performance, and Superior Profitability. This trifecta is not a set of independent features but the emergent property of a deliberate architectural strategy designed from the ground up for the unique demands of DeFi.

Pillar 1: Unmatched Precision through Domain Specialization

The core of the Dexodus AI advantage lies in its rejection of the one-size-fits-all model. Our Specialized Language Models (SLMs) are purpose-built, fine-tuned on a proprietary, DeFi-native Knowledge Graph. This Knowledge Graph is a structured, semantic representation of the entire DeFi ecosystem, capturing the complex and dynamic relationships between protocols, smart contracts, liquidity pools, governance proposals, tokenomic models, and real-time on-chain events. By grounding our models in this rich, contextual data source, we effectively mitigate the root cause of the "hallucination" problem that plagues general-purpose LLMs. Our models do not guess; they reason based on a deep, verifiable understanding of DeFi mechanics. The result is a dramatic increase in accuracy and the generation of reliable, actionable intelligence for agent-driven tasks.

Pillar 2: Mission-Critical Performance through Optimization

In DeFi, speed is a non-negotiable prerequisite for success. Dexodus AI achieves mission-critical performance by leveraging the efficiencies gained from specialization. Because our models are focused, they can be significantly smaller than their general-purpose counterparts without sacrificing relevant knowledge.

These smaller models undergo a rigorous process of advanced compression and engineering specifically for low-latency inference. This process optimizes the models for the computational constraints of real-time, on-chain execution, giving autonomous agents the speed they need to act decisively on fleeting market opportunities.

Pillar 3: Superior Profitability through Economic Efficiency

The third pillar, profitability, is a direct consequence of the first two. The use of highly optimized, smaller models provides a dramatically more affordable and scalable intelligence backbone. The cost of running a Dexodus SLM is an order of magnitude lower than that of a large, general-purpose model, fundamentally changing the economic calculus of deploying autonomous agents. This superior cost-efficiency is the catalyst that will enable the transition of agentic DeFi from a niche, high-cost experiment to a ubiquitous, foundational layer of the market. It makes the mass deployment of thousands or even

millions of DeFi agents economically viable, creating a Cambrian explosion of intelligent automation across the ecosystem.

The strategic choice to prioritize deep domain expertise (Precision) enables the use of smaller, more focused models. These models are inherently faster (Performance) and cheaper to operate (Profitability), creating a tightly coupled system where each advantage reinforces the others.

Feature	General-Purpose LLMs (e.g., GPT-4)	Dexodus AI SLMs
Precision	High risk of factual hallucination; lacks deep DeFi context.	Grounded in a proprietary, DeFi-native Knowledge Graph for high accuracy.
Inference Speed (Latency)	High; unsuitable for real-time, on-chain execution.	Low; optimized through compression for mission-critical, time-sensitive tasks.
Operational Cost	Prohibitively expensive for scaled, 24/7 autonomous operations.	Economically viable for the mass deployment of thousands of agents.
Domain Knowledge	Broad and shallow; knowledge can be outdated or lack nuance.	Deep, specialized, and continuously updated with on-chain and market data.
Security & IP Protection	User data may be exposed to the host.	Runs in verifiable Trusted Execution Environments (TEEs); model IP and user data are confidential.

Table 1: Comparison of General-Purpose LLMs and Dexodus AI SLMs

Architecture Deep Dive: The Dexodus AI Engine

The Dexodus AI platform is an end-to-end system designed to transform raw, multi-modal data into actionable, confidential intelligence. The architecture is composed of three distinct but interconnected layers: the Knowledge Layer, the Model Foundry, and the Application Layer. This structure ensures a robust, scalable, and secure pipeline for creating and delivering DeFi-native intelligence.

3.1 The Knowledge Layer

The foundation of any intelligent system is the quality of its data. The Dexodus Knowledge Layer is a sophisticated data ingestion and processing engine responsible for creating the proprietary Knowledge Graph that fuels our models (see Figure 1). This process begins with the principle that quality supersedes quantity, adhering to a strict "Garbage in, Garbage out" philosophy. The ingestion pipeline aggregates data from four primary sources:

- **Proprietary Research:** In-house analysis and curated datasets that provide a unique informational edge.
- **Market Data:** Real-time, high-frequency data streams, including price feeds, order book depth, and trading volumes from centralized and decentralized exchanges.
- **On-chain Data:** The immutable record of the blockchain itself, including transaction histories, smart contract state changes, wallet activities, and protocol interactions.
- **Unstructured Data:** Contextual information from sources like news articles, social media sentiment, project documentation, and governance forum discussions.

This raw data undergoes intensive Data Aggregation & Pre-processing, followed by sophisticated Feature Engineering to extract meaningful signals. The final output of this layer is the Knowledge Graph—a dynamic, structured representation of the DeFi universe. It is this graph that provides our models with a deep, semantic understanding of the ecosystem, far beyond what can be gleaned from unstructured text alone.

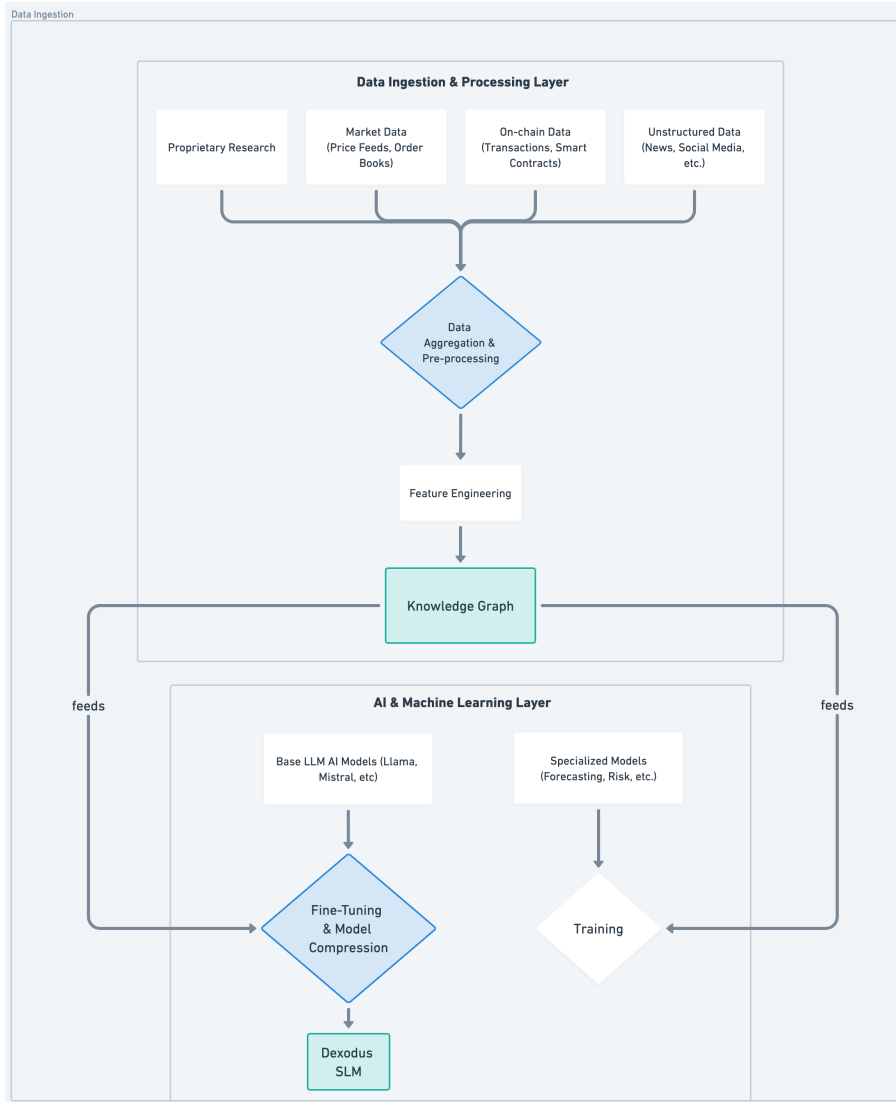


Figure 1: Data Ingestion & Processing

3.2 The Model Foundry

The Model Foundry is where raw potential is transformed into specialized intelligence. This MLOps pipeline, depicted in our Model Development architecture, is a cycle of selection, training, validation, and deployment, powered by a decentralized infrastructure backbone (see Figure 2).

- Base Model Selection:** The process starts with the careful selection of a state-of-the-art, open-source base model. The choice is strategically driven to strike an optimal balance between expressive power, inference performance, and operational cost, while ensuring the license permits commercial use.
- Fine-Tuning on Decentralized Compute:** The selected base model is then fine-tuned using the curated data from our Knowledge Graph. This is a computationally intensive process. To execute it in a scalable, resilient, and cost-effective manner, Dexodus leverages the Aethir Network, a decentralized cloud computing platform that provides access to a global network of enterprise-grade GPUs. By using a decentralized physical infrastructure (DePIN) provider like Aethir, we avoid vendor lock-in with traditional cloud giants and align our infrastructure with the core ethos of Web3, all while benefiting from a more competitive cost structure for GPU resources. The fine-tuning process itself is meticulously managed, using state-of-the-art parameter-efficient fine-tuning (PEFT) techniques. We carefully optimize all hyperparameters, to maximize knowledge transfer while preventing overfitting. The entire environment is containerized using Docker for

reproducibility, and all experiments are tracked using specialized tools to ensure a systematic approach to model improvement.

- **Compression, Validation, and Deployment:** Following fine-tuning, the model undergoes advanced Model Compression techniques to optimize it for low-latency inference (see Figure 2). The resulting SLM is then subjected to rigorous Model Validation & Backtesting against historical and simulated market data. This stage includes the advanced evaluation techniques discussed in the next section. Models that pass this stringent quality gate are versioned and stored in the Model Registry, ready for deployment. If a model fails validation, the feedback is used to iterate on the fine-tuning process, creating a continuous improvement loop (see Figure 2).

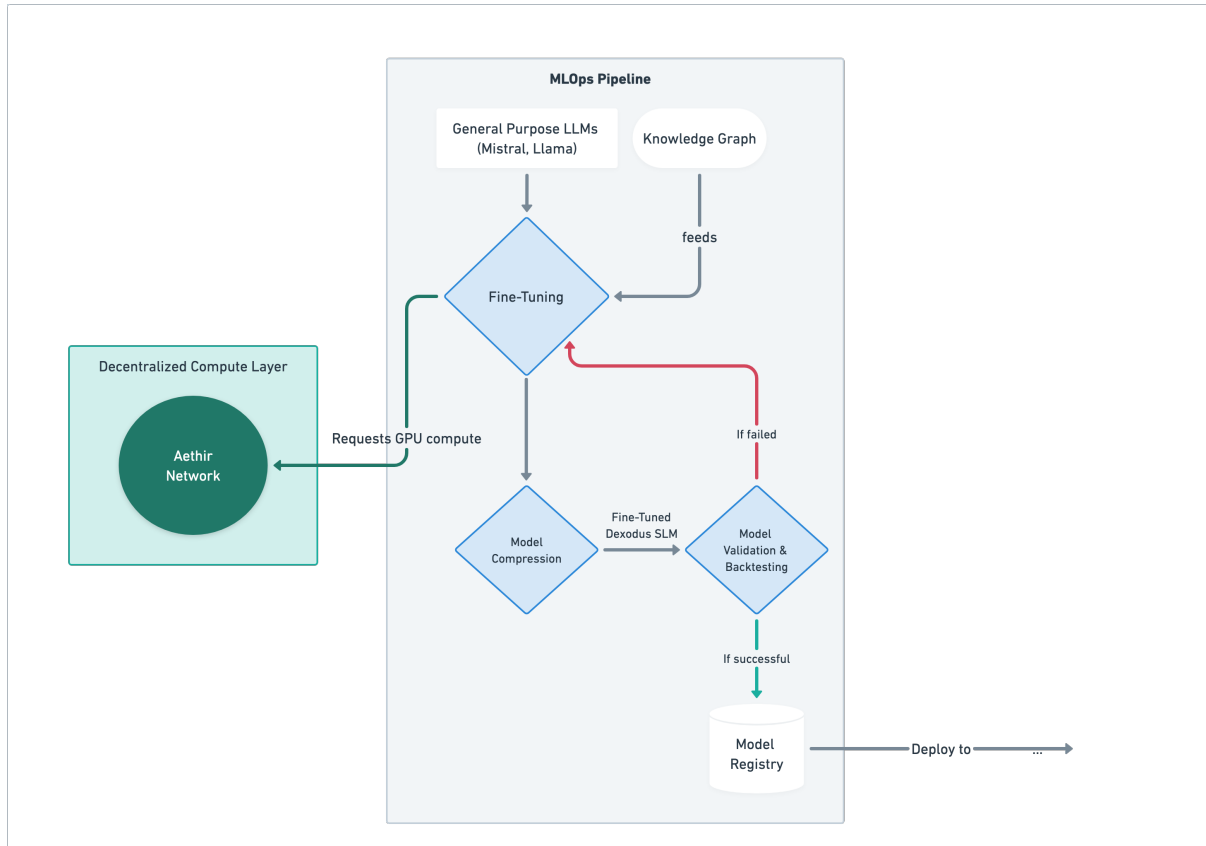


Figure 2: MLOps Pipeline

3.3 The Application Layer

The final layer is where intelligence meets the market. The Dexodus Application Layer delivers the power of our SLMs to users through a flexible, dual-pronged strategy.

- **Core API:** The primary delivery mechanism is the Dexodus Core API. Critically, this is not a standard API. Every call is processed within our confidential compute cluster, leveraging Trusted Execution Environments (TEEs). This provides a cryptographic guarantee that our clients' proprietary data (such as wallet addresses or trading strategies) remains completely private, while our model's intellectual property is also protected. It allows clients to integrate our precision and performance directly into their own applications, trading bots, and risk management systems without exposing their alpha.
- **First-Party Products (Dexodus Finance):** To demonstrate the power of our technology and create immediate value, we will deploy our SLMs in our own suite of first-party applications under the Dexodus Finance umbrella. The financial products being developed by Dexodus Finance includes a Robo Advisor for automated yield farming strategies and a planned Autonomous Agent

Fund that directly leverages our agents to generate returns. These products serve as both a continuous, real-world validation environment for our models and a direct revenue stream.

By combining best-in-class open-source tooling with strategic partnerships in the decentralized infrastructure space, Dexodus AI can focus on its core mission: building the world’s most advanced intelligence layer for DeFi.

Layer	Technology / Partner	Role in Dexodus AI
Decentralized Compute	Aethir Network	Provides scalable, cost-effective, decentralized GPU resources for model training and fine-tuning.
Confidential Execution	iExec, Phala Network	Power the secure TEE-based cluster for confidential model inference, protecting IP and user data.
Model Development	Hugging Face, Weights & Biases	Provide the foundational libraries for model access and the platform for systematic experiment tracking.
Base Models	Phi-3, Qwen2, Llama...	Serve as the high-performance, open-source foundation for fine-tuning specialized DeFi models.
Containerization	Docker	Ensures reproducibility and portability of the development and deployment environments.
Data Annotation	Label Studio, Labelbox, etc.	Tools used in the crucial data preparation phase to create high-quality training sets.

Table 2: Technology and Partner Stack

Ensuring Excellence: A New Standard for Model Evaluation

In the high-stakes environment of DeFi, claims of "precision" are insufficient without a transparent and robust methodology to prove them. Standard quantitative benchmarks used in natural language processing, such as BLEU or ROUGE, are fundamentally inadequate for this domain. They measure surface-level similarity but fail to capture the deep, contextual, and factual correctness that is paramount when financial assets are on the line. A model can score well on these metrics while still producing a sophisticated hallucination. Recognizing this, Dexodus AI employs an evaluation framework that combines state-of-the-art AI techniques with rigorous human oversight.

The LLM-as-a-Judge Framework

At the heart of our evaluation process is the LLM-as-a-Judge paradigm. This approach leverages a powerful, impartial Large Language Model to act as a "judge," assessing the quality of other AI-generated outputs. It provides a scalable and consistent alternative to relying solely on slow and expensive human evaluation for every single output. For this role, we utilize highly capable models and prompt them with DeFi-specific context, effectively guiding them to act as specialized evaluators.

Our implementation of this framework is highly structured:

- **Defining Success and Failure:** Before evaluation begins, we establish a clear, granular rubric that defines "success modes" (the desired, correct behaviors the model should exhibit) and "failure modes" (the specific types of errors, hallucinations, or unsafe outputs to be minimized) for each DeFi task.
- **Contextual, Multi-faceted Evaluation:** The judge model is prompted not just to provide a score, but to perform a multi-faceted analysis based on our specific criteria, such as factual accuracy, relevance, logical consistency, and adherence to protocol specifications. Crucially, the judge is required to provide a detailed, natural language explanation for its judgment. This rich, qualitative feedback is far more valuable for model improvement than a simple numerical score.
- **Scalable and Rapid Iteration:** This approach allows us to evaluate model performance at a scale and speed that would be impossible with human evaluators alone. It creates a tight feedback loop where our developers can rapidly identify weaknesses, retrain our production models, and verify improvements.

While the LLM-as-a-Judge paradigm is powerful, it is not without its challenges, including potential biases and vulnerability to adversarial manipulation. Our strategy directly mitigates these risks by meticulously engineering the evaluation framework itself. We create highly detailed, DeFi-specific rubrics and provide rich, contextual data with each evaluation prompt. This process "specializes" the judge model for the given task, grounding its evaluation in verifiable facts and making it an expert for that narrow domain. This significantly reduces the risk of bias and failure modes associated with using a general-purpose models as generic judges.

The Human-in-the-Loop (HITL) Imperative

The LLM-as-a-Judge system is designed to augment, not replace, human expertise. A critical final stage of our evaluation process is Human-in-the-Loop (HITL) review. Our team of DeFi and AI experts reviews a sample of the judge model's outputs, paying special attention to the most complex, high-stakes, or ambiguous cases. This HITL stage serves two vital functions:

- It provides the ultimate ground truth, verifying the quality of our production SLMs before they are deployed.
- It creates a secondary feedback loop to continuously improve the judge models themselves, refining their accuracy and alignment with human expert judgment over time.

This hybrid approach establishes an AI governance ecosystem that is both scalable and deeply rigorous. It moves beyond simple performance metrics to create a system of checks and balances that ensures our models are not just powerful, but also trustworthy, reliable, and safe for mission-critical applications in decentralized finance. This commitment to evaluation excellence is a core component of our intellectual property and a key competitive differentiator.

Confidential AI for a Zero-Trust World

In decentralized finance, information is alpha. The logic of a trading strategy, the data used to make a decision, and the parameters of an AI model are all invaluable intellectual property. For any serious financial institution or DeFi protocol to entrust its operations to a third-party AI service, it requires an absolute, verifiable guarantee of confidentiality. Standard security measures, which protect data at rest and in transit, are insufficient as they leave data and code exposed during the most critical phase: processing. Dexodus AI solves this "data-in-use" vulnerability by building its entire inference infrastructure on a foundation of Confidential Computing.

The Power of Trusted Execution Environments (TEEs)

At the core of our security architecture is the Trusted Execution Environment (TEE). A TEE is a hardware-isolated secure area within a computer's processor, often referred to as a "secure enclave". This enclave is cryptographically sealed off from the rest of the system, including the host operating system, the cloud provider's administrators, and any other software running on the machine. Code and data loaded into a TEE are protected with respect to both confidentiality (they cannot be read from the outside) and integrity (they cannot be tampered with). This technology allows us to create a verifiable "black box" for computation. We can process highly sensitive data and execute proprietary AI models within the enclave, with the hardware itself guaranteeing that nothing and no one outside the enclave can access them while they are in use.

The Dexodus Confidential AI Architecture

Our "API with TEE" architecture is built upon a robust, decentralized network of confidential computing resources to provide end-to-end, verifiable security for every request (see Figure 3). This infrastructure leverages state-of-the-art TEE-enabled hardware, including high-performance GPUs, ensuring that even the most demanding AI workloads can be executed with maximum security and privacy.

The process unfolds in three steps:

1. **Encrypted Request and Attestation:** A client sends a request, already encrypted on their end, to the Dexodus API gateway. The request is dispatched to our Confidential Compute Cluster. Before any processing occurs, the client's system can perform Enclave Attestation. This is a

cryptographic protocol where the TEE provides a signed report proving to the client that it is a genuine, untampered hardware environment running the exact, authorized version of the Dexodus SLM code. This step establishes trust in a zero-trust environment.

2. **Secure Execution in the Enclave:** Once attestation is complete, the encrypted request is passed into the secure enclave. Only inside this protected environment is the data decrypted. The SLM, which also resides entirely within the enclave, processes the data to generate an inference. At no point are the client’s raw data or the model’s proprietary logic and parameters exposed in cleartext memory accessible to the host system.
3. **Encrypted Response:** The result of the inference is encrypted before it leaves the enclave and is then sent back to the client. The entire computational process occurs with the guarantee that the sensitive inputs and the valuable model IP remain completely confidential.

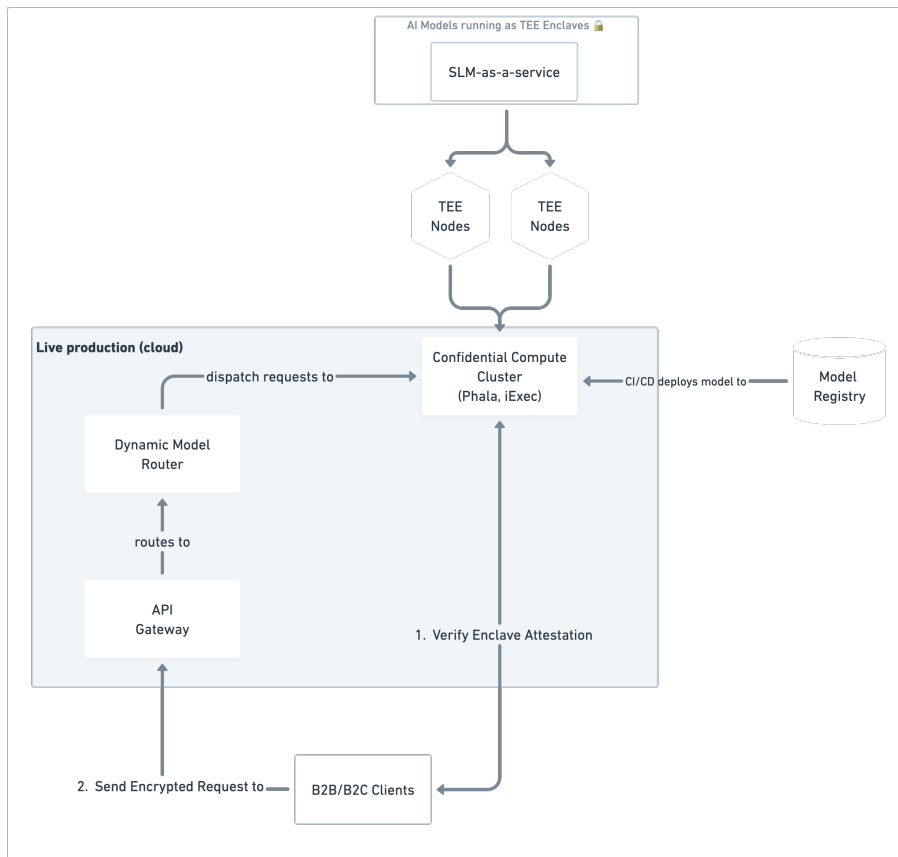


Figure 3: API & TEE Environment

This fundamental commitment to Confidential Computing is non-negotiable. By architecting our entire inference layer within hardware-secured TEEs, Dexodus AI offers more than just "AI for DeFi." We offer **Verifiable Confidential AI**. This is not merely a feature; it is the core of our trust proposition, designed to meet the stringent security demands of the most sophisticated participants in the financial ecosystem. It allows us to make a powerful, cryptographically verifiable promise to our clients: "You can leverage our intelligence without revealing your secrets."

The Autonomous Future: Vision & Roadmap

The technologies and architectures detailed in this paper are not ends in themselves. They are the foundational components of a much larger vision: building the central nervous system for a new autonomous DeFi economy. The convergence of specialized AI, decentralized computing, and confidential computing creates the conditions for a Cambrian explosion of on-chain intelligence. Dexodus AI is positioned at the epicenter of this paradigm shift.

Our vision is for a future where DeFi is populated by millions of secure, efficient, and intelligent autonomous agents. These agents, powered by Dexodus AI, will perform a vast spectrum of tasks far beyond current human or algorithmic capabilities, from discovering complex, multiprotocol arbitrage opportunities to dynamically managing treasury risk, optimizing liquidity across hundreds of pools, and underwriting novel forms of decentralized insurance. Dexodus AI will be the indispensable foundational intelligence layer that enables the creation of financial products that are impossible today.

To realize this vision, we are executing a strategic, phased roadmap:

Phase 1: Foundation (Current) • Development and refinement of the core suite of DeFi-specialized SLMs.

- Deployment of the secure TEE-powered Dexodus Core API for initial partners.
- Launch of the first-party Dexodus Finance Robo Advisor to showcase the technology and establish a performance track record.
- Scale and optimize the underlying decentralized compute and confidential infrastructure to ensure reliability and cost-efficiency.

Phase 2: Ecosystem Growth • Systematic onboarding of B2B partners, including DeFi protocols, hedge funds, and institutional trading desks.

- Expansion of the specialized SLM suite to cover new high-value domains (e.g., advanced risk modeling, on-chain compliance monitoring, and protocol security analysis).
- Launch of the Dexodus AI Plugins Marketplace, allowing third-party developers to build and monetize their own specialized applications on top of our core intelligence layer.

Phase 3: Decentralization & Governance • Research and development into pathways for the progressive decentralization of the platform's governance.

- Exploration of a token-based model to coordinate the ecosystem and align incentives for all protocol participants to contribute to its growth and security.

The journey to build the intelligent future of decentralized finance is ambitious, but the path is clear, and the foundational technology is here. We invite developers, protocols, and investors who share our vision to connect with us. Together, we can build the infrastructure that will power the next generation of finance.