

HAUS C & D

1. OG & 2. OG

WHG C.1.1 & D.1.1

C.2.1 & D.2.1

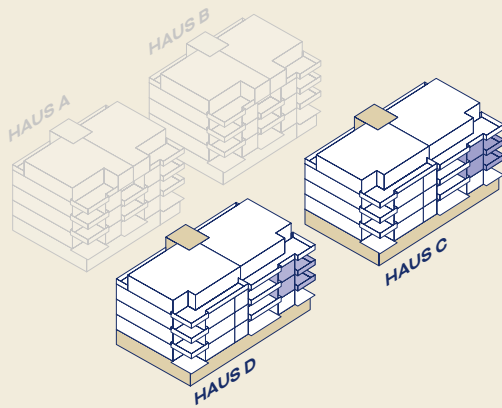
4.5-Zimmer-Wohnungen

Wohnfläche 117.1 m²

Loggia 18.0 m²

Keller C.1.1: 10.2 m²/D.1.1: 11.3 m²

C.2.1: 11.1 m²/D.2.1: 9.8 m²



0 1 2 3 4 5 m

MASSSTAB 1:100

