

# HAUS C & D

1. OG & 2. OG

WHG C.1.2 & D.1.2

C.2.2 & D.2.2

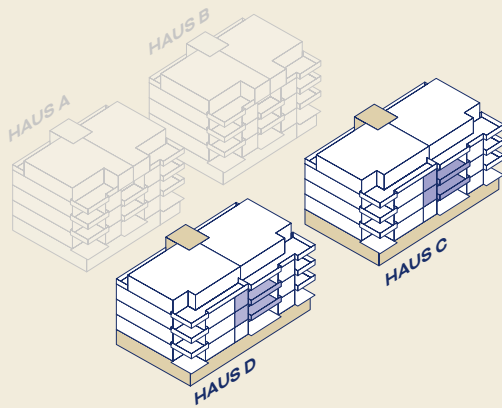
## 3.5-Zimmer-Wohnungen

**Wohnfläche** 92.9 m<sup>2</sup>

**Loggia** 17.4 m<sup>2</sup>

**Keller** C.1.2: 9.9 m<sup>2</sup>/D.1.2: 8.4 m<sup>2</sup>

C.2.2: 11.0 m<sup>2</sup>/D.2.2: 9.3 m<sup>2</sup>



0 1 2 3 4 5 m

MASSSTAB 1:100

