

# HAUS C & D

1. OG & 2. OG

WHG C.1.3 & D.1.3

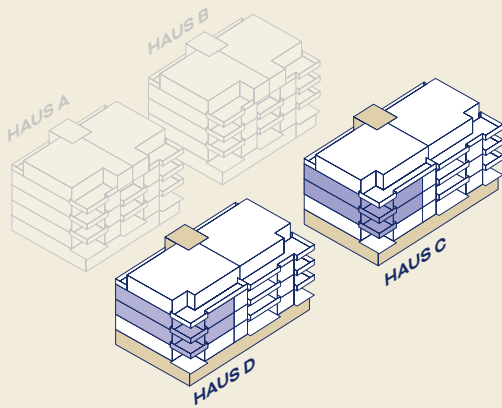
C.2.3 & D.2.3

## 4.5-Zimmer-Wohnungen

**Wohnfläche** 117.1 m<sup>2</sup>

**Loggia** 18.0 m<sup>2</sup>

**Keller** C.1.3: 11.8 m<sup>2</sup>/D.1.3: 9.3 m<sup>2</sup>  
C.2.3: 11.5 m<sup>2</sup>/D.2.3: 10.5 m<sup>2</sup>



0 1 2 3 4 5 m

MASSSTAB 1:100

