

Contour

CONTOUR TOUCH

Product manual

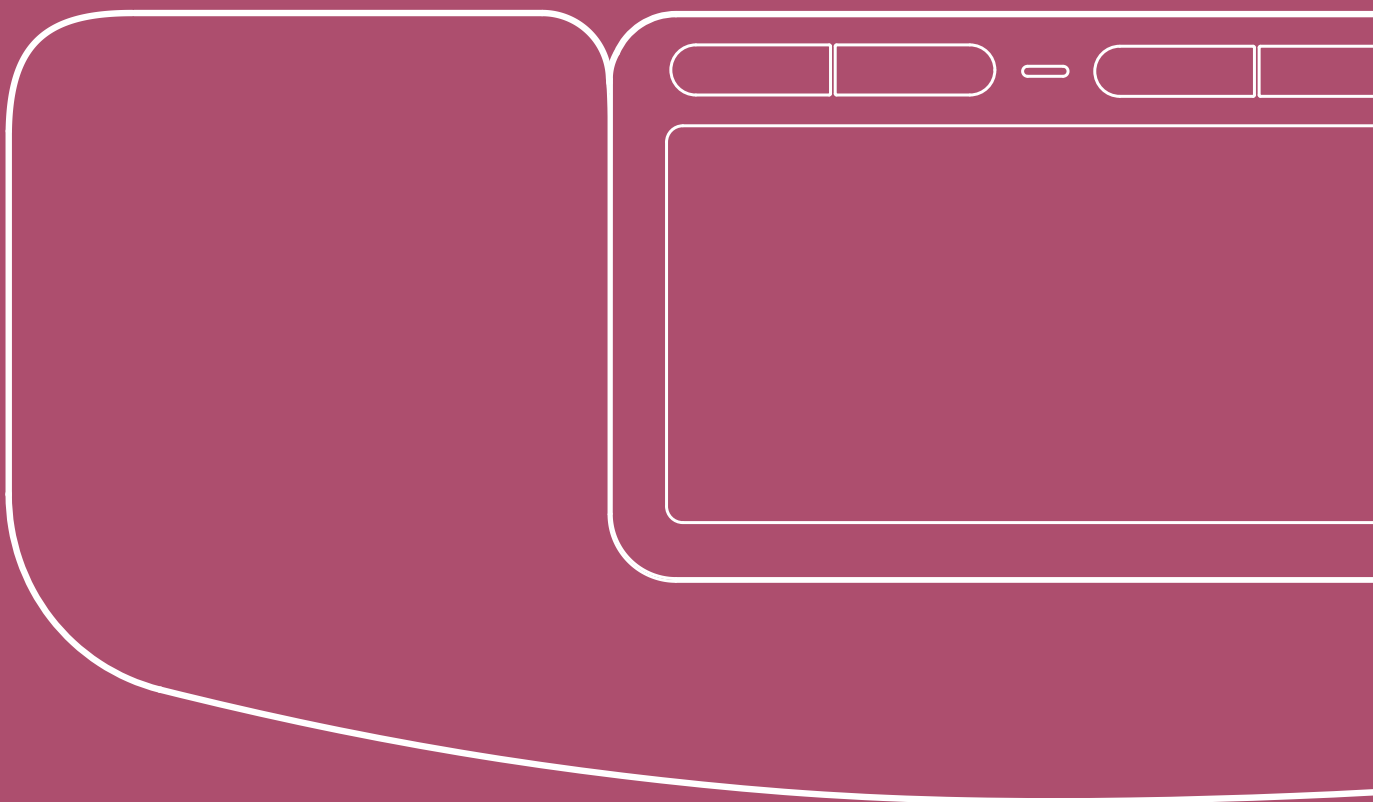


TABLE OF CONTENTS.

What's in the box	1
Meet Contour Touch	2
Get set up for comfort	3
Quick connect guide - wired	4
Quick connect guide - wireless	5
SnapLinks	7
Buttons & touchpad customization	8
Battery & charging	10
Battery replacement	11
Cleaning & maintenance	13
Safety, legal & warranty info	14



WHAT'S IN THE BOX.

Whether you have a Contour Touch Wireless or Contour Touch Wired, you'll find everything you need for a seamless setup inside the box.

Contour Touch Wireless box content

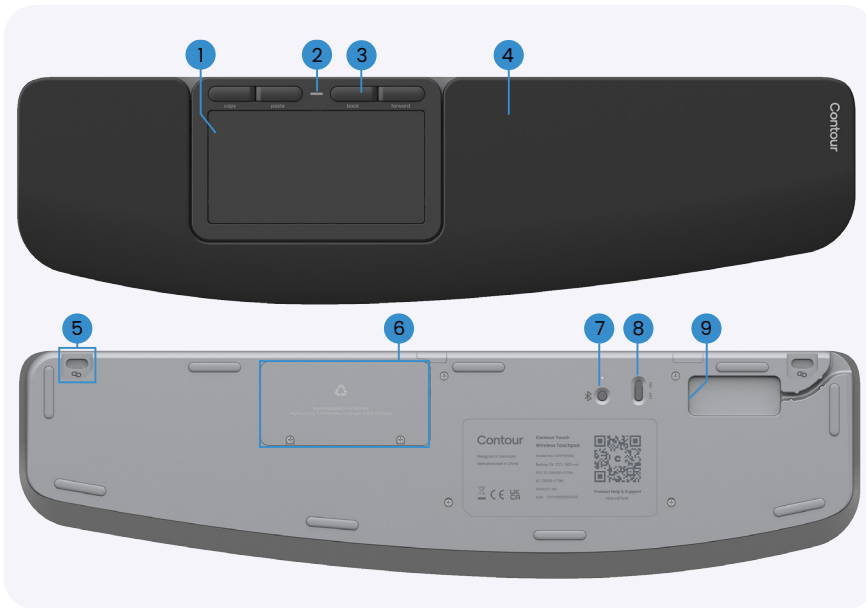


Contour Touch Wired box content



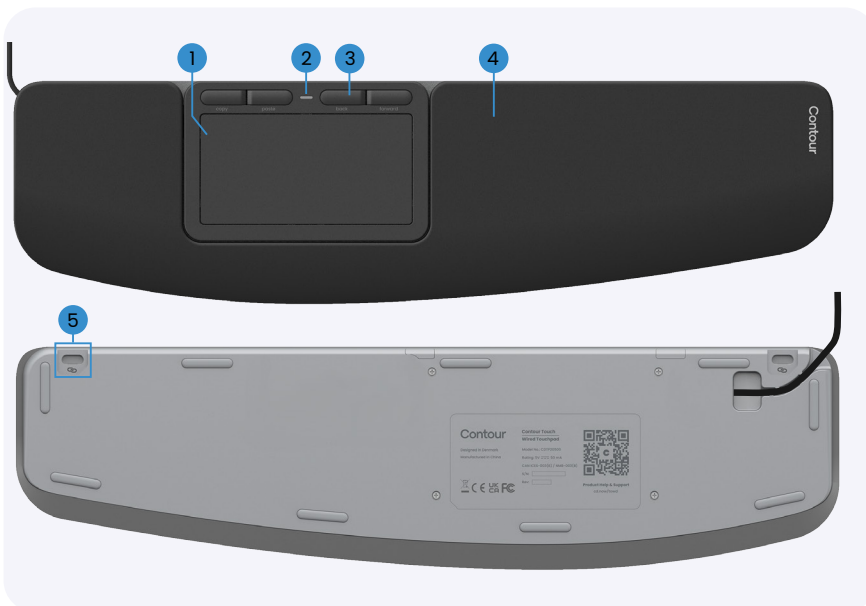
MEET CONTOUR TOUCH.

Contour Touch Wireless overview



1. Touchpad
2. Battery status LED
3. Shortcut buttons
4. Wrist rest
5. SnapLink attachments
6. Battery cover
7. Bluetooth button
8. On/off switch
9. Charging port

Contour Touch Wired overview



1. Touchpad
2. Power LED
3. Shortcut buttons
4. Wrist rest
5. SnapLink attachments

GET SET UP FOR COMFORT.

Before you start working, set yourself up for all-day comfort.

Relax your shoulders. Keep your elbows at 90 degrees, close to your body. Your forearms should be parallel to the floor, with wrists in a straight, neutral position.

Line up the H key of your keyboard and the center of the touchpad with your monitor – and your body. This helps keep your posture natural and balanced.

Position the keyboard close to the touchpad, and keep the Contour Touch far enough from the desk edge to support your forearms and reduce wrist twisting.

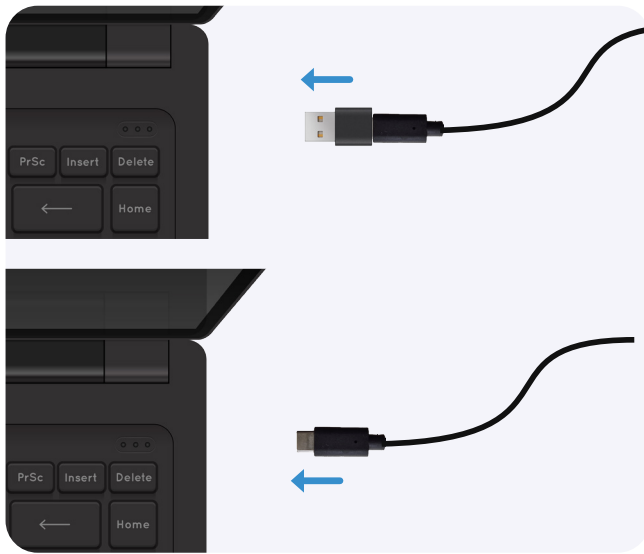


QUICK CONNECT GUIDE

– WIRED.

If you have the wired version of Contour Touch, just plug the USB cable into any available USB port – your PC, dock, hub, or monitor will all work.

Your computer will connect to the touchpad automatically. No extra steps needed.



The cable comes with a USB-A adapter pre-installed. Prefer USB-C?

Just slide the adapter off and plug in the USB-C connector instead

QUICK CONNECT GUIDE

– WIRELESS.

If you have the wireless version of Contour Touch, you need to connect via Bluetooth.

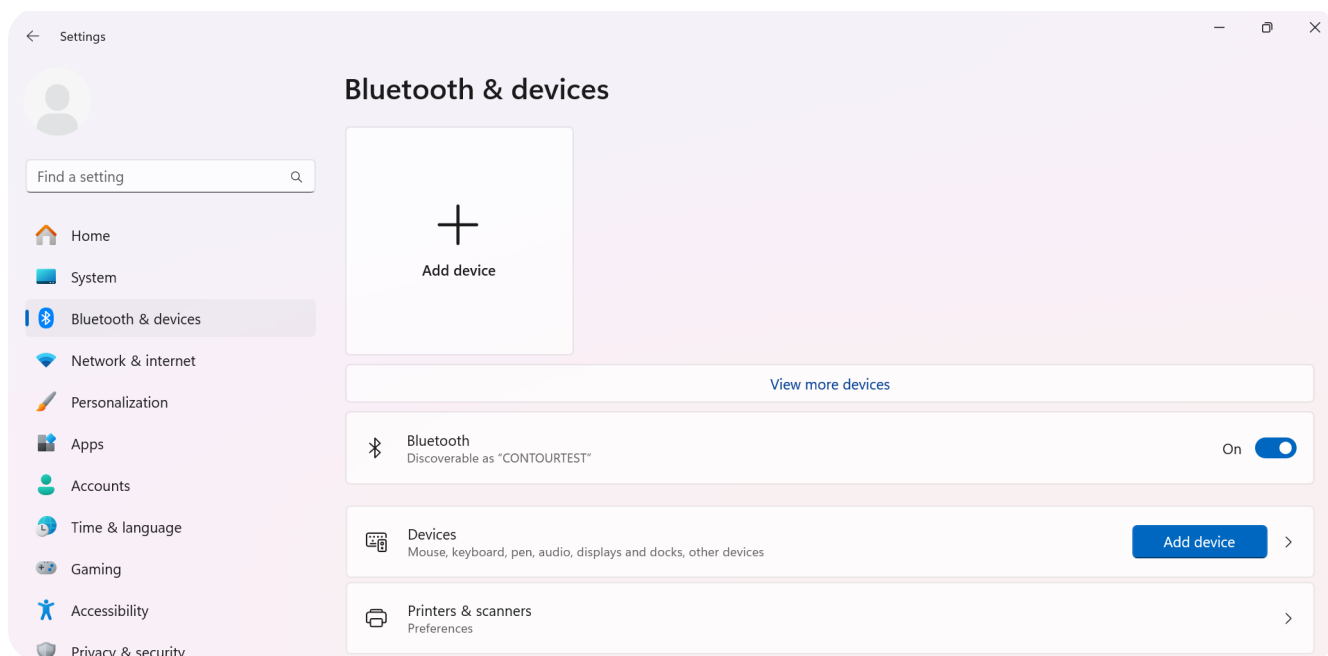
Connect via Bluetooth



Step 1: Turn on the product by using the slider on the bottom. The LED will start flashing – that means it's in pairing mode (for 120 seconds)

Step 2: Go to Settings – Bluetooth & devices – Add Device – Bluetooth, and select Contour Touch from the list.

If Swift Pair is enabled on your PC, it will automatically pop up at the lower right corner of your screen



Restart Bluetooth pairing

Want to re-pair your Contour Touch to a different device?

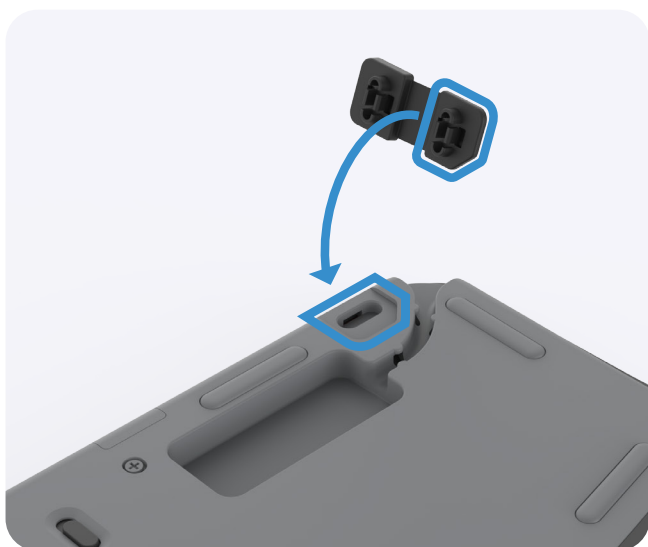


Press and hold the Bluetooth button for 3 seconds. The LED flashes – that means the touchpad is discoverable again for 120 seconds

SNAPLINKS.

Using Contour Touch with Balance Full-Size Keyboard?

Use the SnapLinks (included in your Contour Touch box) to seamlessly attach the two devices. This creates perfect alignment – improving comfort and giving you a stable setup, while you work.



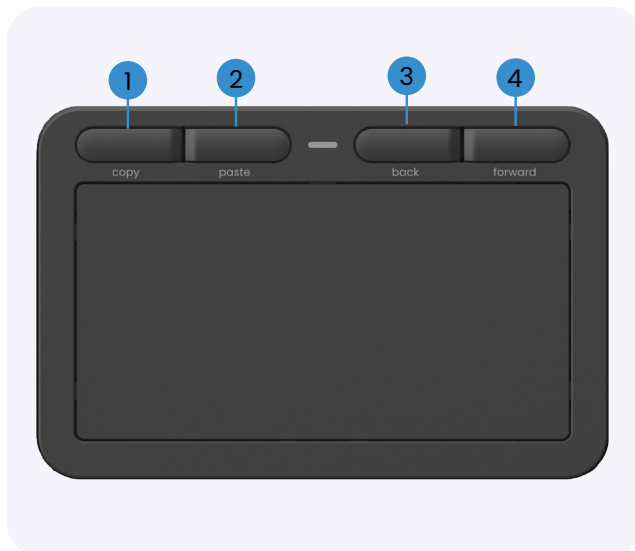
Step 1: Turn your Contour Touch around and attach the two SnapLinks to the SnapLink attachment points



Step 2: Turn the Contour Touch back around and place it on your desk with the touchpad facing up. Press the Balance Full-Size Keyboard onto the SnapLinks until it clicks into place

BUTTONS & TOUCHPAD CUSTOMIZATION.

Shortcut buttons



Contour Touch comes with 4 shortcut buttons:

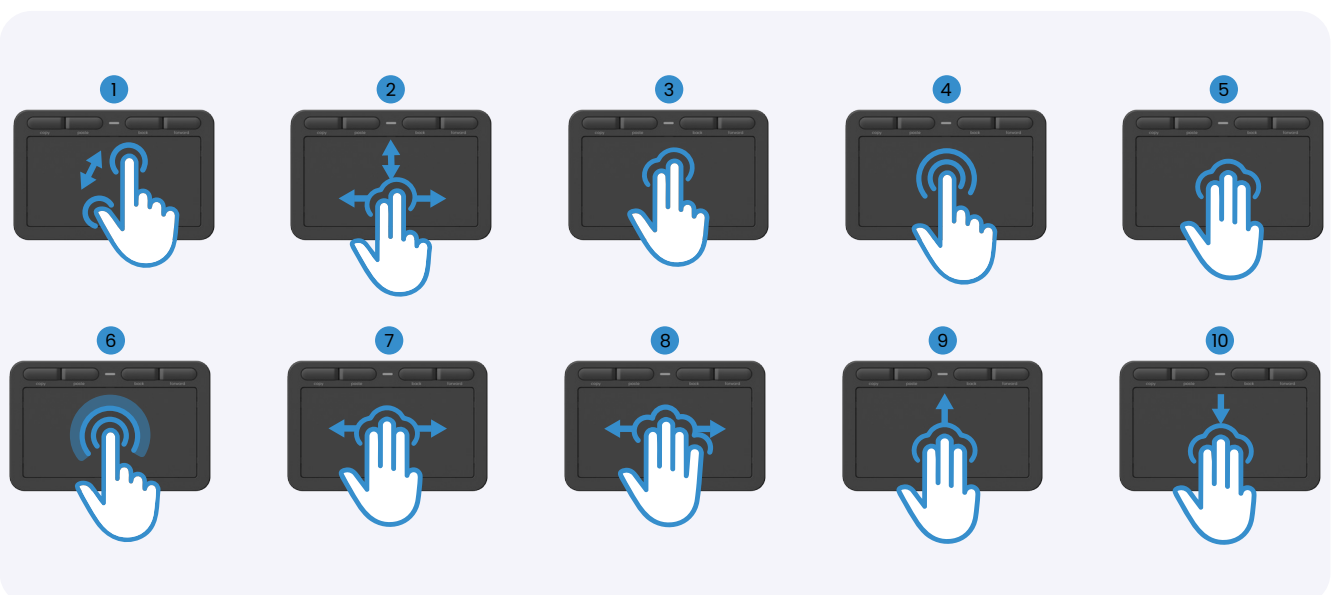
1. Copy
2. Paste
3. Back
4. Forward

Want to make it your own?

Download Contour software to customize and unlock the full potential of your Contour Touch

Visit cd.now/sw to get started

Touchpad gestures



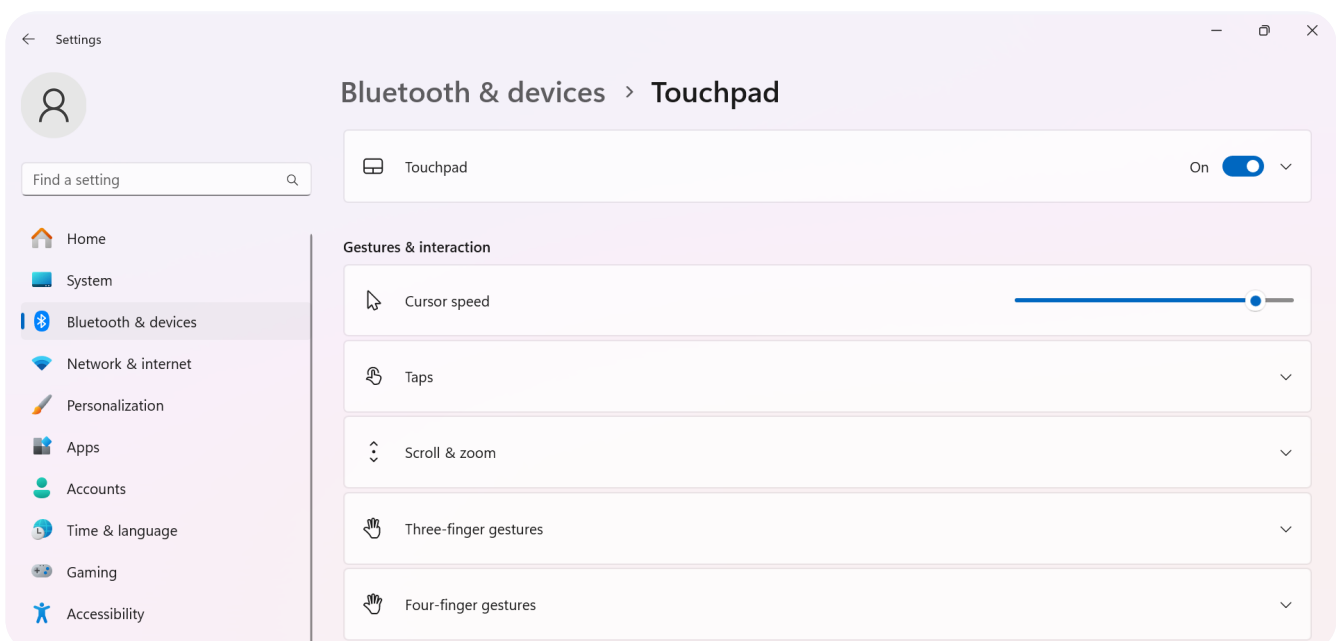
Contour Touch comes with pre-set touchpad gestures to help you boost your productivity.

1. **Zoom:** Move two fingers apart to zoom in or pinch them together to zoom out
2. **Scroll:** Slide two fingers up or down or from side to side to scroll through pages or lists
3. **Right click:** Tap once with two fingers anywhere or click in the lower-right corner
4. **Double click:** Tap twice with one finger to open or select an item
5. **Open search:** Tap once with three fingers to open search
6. **Drag and drop:** Tap twice and hold with one finger, then slide to move an item; release to drop it
Or deep press and hold with one finger, then use another finger to drag the item around
7. **Switch apps:** Swipe three fingers left or right to switch between open applications
8. **Switch desktops:** Swipe four fingers left or right to move between multiple desktops
9. **Task view:** Swipe three fingers up to see all open windows and switch between them
10. **Show desktop:** Swipe three fingers down to reveal the desktop

Want to change the behaviour of the touchpad?

Open your Windows Settings to change cursor speed, gestures, disable right click and much more.

Go to Settings – Bluetooth & devices – Touchpad



BATTERY & CHARGING.

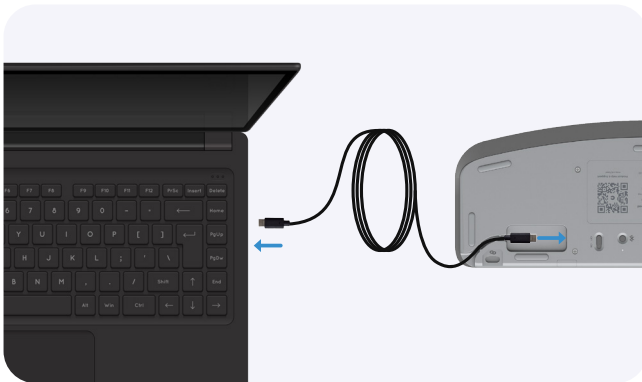
Contour Touch has a built-in rechargeable battery, so there's nothing to replace unless absolutely needed.

The battery arrives pre-charged and ready to go. You'll get up to 3 weeks of use on a full charge with average daily use.



Battery getting low? When the battery drops below 10%, the LED pulses red to let you know it's time to recharge

Charging



Plug the USB-C cable into the port on the bottom side of the product

The touchpad stays fully functional while charging – it just works in wired mode temporarily. Once you unplug, the wireless features are back on



While charging, the battery LED pulses green. When fully charged, it glows solid green

Sleep modes

To help your battery last even longer, Contour Touch knows when to take a break.

It goes to sleep after 60 minutes of inactivity.

Just tap the touchpad or one of the buttons to wake it up.

BATTERY REPLACEMENT.

While your Contour Touch is built to last, Li-ion batteries naturally wear out over time. If it's no longer holding a charge, you can replace it with a new one – just make sure it's the official replacement battery.

Safety guidance

Working with lithium-ion batteries involves risk and requires caution. Battery replacement should be carried out only by adults with basic technical knowledge. If you are unsure or uncomfortable performing this procedure, please contact Contour Support. Failure to follow these instructions may result in personal injury, damage to the product, or voiding of your warranty.



- Replace the battery only when necessary. If your device is functioning normally, there is no need to replace the battery
- Do not expose the battery to heat or fire. Keep it away from direct sunlight, heaters, or open flames
- Never puncture, crush, or disassemble the battery. This may lead to leakage, fire, or explosion
- Do not short-circuit the battery terminals. This can result in burns or fire

Disclaimer: Contour is not liable for any injury, damage, or loss resulting from improper handling or installation of the battery. By proceeding, you acknowledge the risks and agree to follow all safety guidelines provided.

Low charge level



Before you begin:

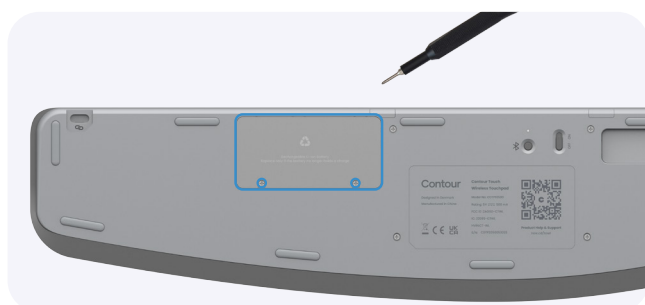
We recommend using the touchpad until the battery is depleted or at least at a low charge level. This minimizes the risk of electric shock, short circuits, or accidental ignition during removal.

When the Battery status LED is pulsing in red, the battery is at a low charge level, which means it's safe to begin the battery replacement.

Replace the battery



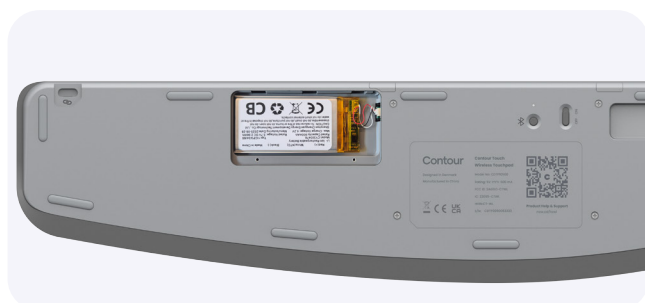
Step 1: For safety, turn off your Contour Touch and unplug all cables first. If it feels warm, let it cool before replacing the battery



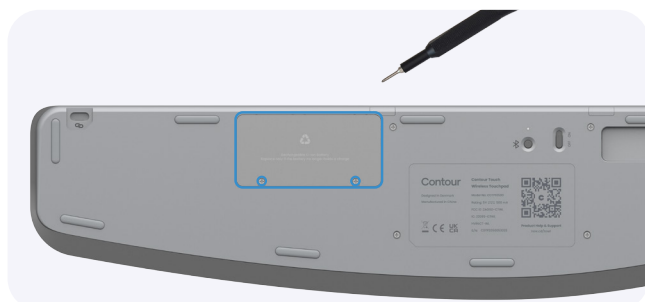
Step 2: Turn the product around and unscrew the two screws on the battery cover



Step 3: Gently disconnect the battery cable from its plug and remove the battery



Step 4: Connect the new battery and place it into the groove



Step 5: Re-attach the battery cover using the 2 screws

Step 6: Dispose of the old battery responsibly, following local regulations



CLEANING & MAINTENANCE.

Contour Touch is designed to be easy to maintain – and yes, it can be safely disinfected.

Follow these steps to clean the product safely and keep your warranty intact:

- Unplug any cables and make sure the device is turned off before cleaning
- Use an alcohol-based solution (up to 70% concentration) for disinfection
- Never apply liquid directly to the device. Instead, lightly dampen a soft, clean cloth with the solution and gently wipe down the surface
- Avoid soaking, dripping, or letting moisture pool. Too much liquid can harm sensitive components
- Once wiped, make sure everything is dry before using the device again

Safety, legal and warranty info

FCC Statement

Changes or modifications not expressly approved by the party responsible for compliance could void the user's authority to operate the equipment.

This equipment has been tested and found to comply with the limits for a Class B digital device, pursuant to Part 15 of the FCC Rules. These limits are designed to provide reasonable protection against harmful interference in a residential installation. This equipment generates uses and can radiate radio frequency energy and, if not installed and used in accordance with the instructions, may cause harmful interference to radio communications.

However, there is no guarantee that interference will not occur in a particular installation. If this equipment does cause harmful interference to radio or television reception, which can be determined by turning the equipment off and on, the user is encouraged to try to correct the interference by one or more of the following measures:

- Reorient or relocate the receiving antenna
- Increase the separation between the equipment and receiver
- Connect the equipment into an outlet on a circuit different from that to which the receiver is connected
- Consult the dealer or an experienced radio/TV technician for help

This device complies with part 15 of the FCC rules. Operation is subject to the following two conditions:

(1) this device may not cause harmful interference, and

(2) this device must accept any interference received, including interference that may cause undesired operation.

IC Statement

This device complies with Industry Canada's licence-exempt RSSs. Operation is subject to the following two conditions:

1. This device may not cause interference; and
2. This device must accept any interference, including interference that may cause undesired operation of the device.

The term "IC:" before the certification/registration number only signifies that the Industry Canada technical specifications were met. This product meets the applicable Industry Canada technical specifications.

Warranty

If there is a functional defect due to faulty manufacturing, we will replace the product. This warranty does not cover damage that results from misuse of the product.

Attention!

If you attempt to dismantle the product for any other purpose than battery replacement, you will invalidate your warranty.

Contour Design Nordic A/S

Nyropsgade 43, 1. floor
DK-1602 Copenhagen V, Denmark
Contact Support: cd.now/support

Contour Innovations LLC

10 Industrial Drive
Windham, New Hampshire 03087, USA
Contact Support: cd.now/support

For more information please visit:
www.contourdesign.com

Tested to comply with FCC and
IC standards.

