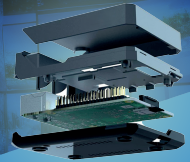




THE CLOUD-BASED SOFTWARE SOLUTION FOR INFOSCREENS



Can be combined with the powerful Connectorbox!

What we offer - A fully **cloud-based** solution. It comes with all the **hardware** and **software** you need, so you can start designing and scheduling content and managing your **screens** straight away - **with minimal effort**.

Show media on your screens quickly and easily

You can easily display not only videos and images, but also Office documents, websites, YouTube videos and live streams.

Plug-and-play hardware setup

Make your content shine immediately - with our preconfigured plug & play system.

Simple scheduling and screen management

Set different content plans for different screens in seconds. Monitor and manage thousands of screens with just a few clicks.

Remote support

Ensure hassle-free trouble-shooting with remote technical support.

Maximum safety and reliability

You have full control over the portal and the player. You can rely on our security features and enjoy a solution you can trust.

+ Free apps to install

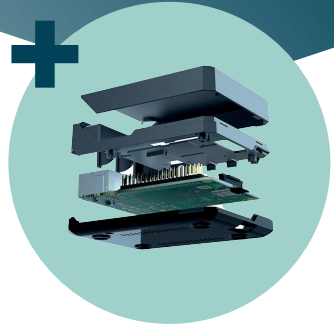


LANTECH Group

LANTECH Informationstechnik GmbH
Philipp-Kachel-Straße 42a • D-63911 Klingenberg/Main
+499372/9451-0 • vertrieb@lantech.de • www.lantech.eu



Connector box bundle



- **Present** engaging content **on screens** with **our software solution**
- **User-friendly** interface
- **Real-time updates** guarantee always up-to-date content
- Perfect for use in **stores, offices** and numerous other applications

+ Connector box included

- Compact **mini PC**
- Easy installation
- Supports up to **4k native resolution**
- **Micro-HDMI** interface
- Requires power connection for the Connector Box power supply

The term is at least one year and can then be terminated flexibly on a monthly basis.



Basic product

- **Present** engaging content **on screens** with **our software solution**
- **User-friendly** interface
- **Real-time updates** guarantee always up-to-date content
- Perfect for use in **stores, offices** and numerous other applications

The term is at least one year and can then be terminated flexibly on a monthly basis.

LANTECH Group

LANTECH Informationstechnik GmbH
Philipp-Kachel-Straße 42a • D-63911 Klingenberg/Main
+499372/9451-0 • vertrieb@lantech.de • www.lantech.eu