

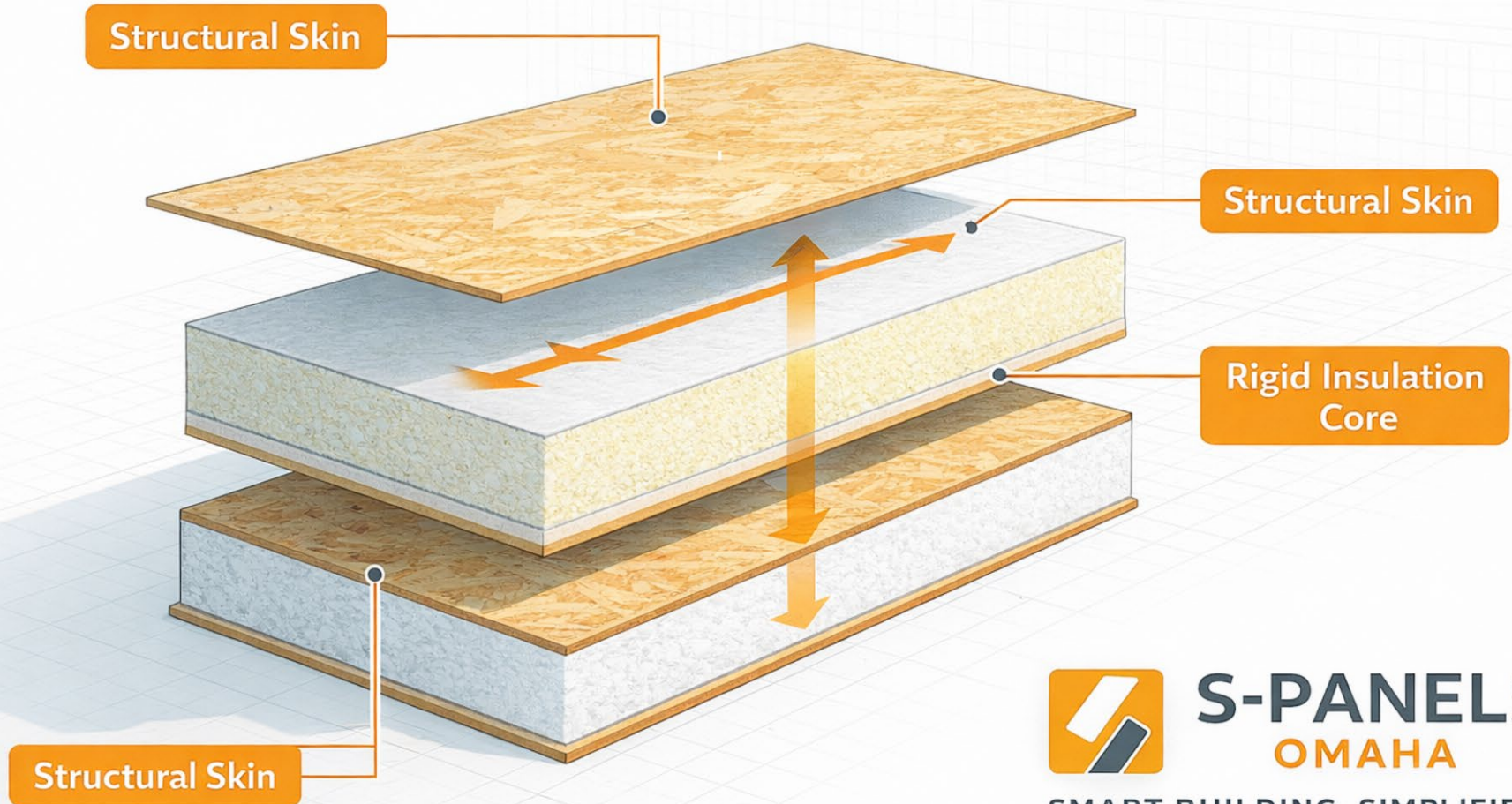
# S-Panels Omaha

Smart Building. Simplified.

# Who We Are

- S-Panels Omaha provides high-performance Structural Insulated Panels (SIPs) designed to replace traditional framing with a stronger, more efficient, and more resilient building system.
- Our approach improves construction quality, reduces long-term energy use, and delivers buildings built to last—for homeowners, builders, and communities.

# What Are Structural Insulated Panels?

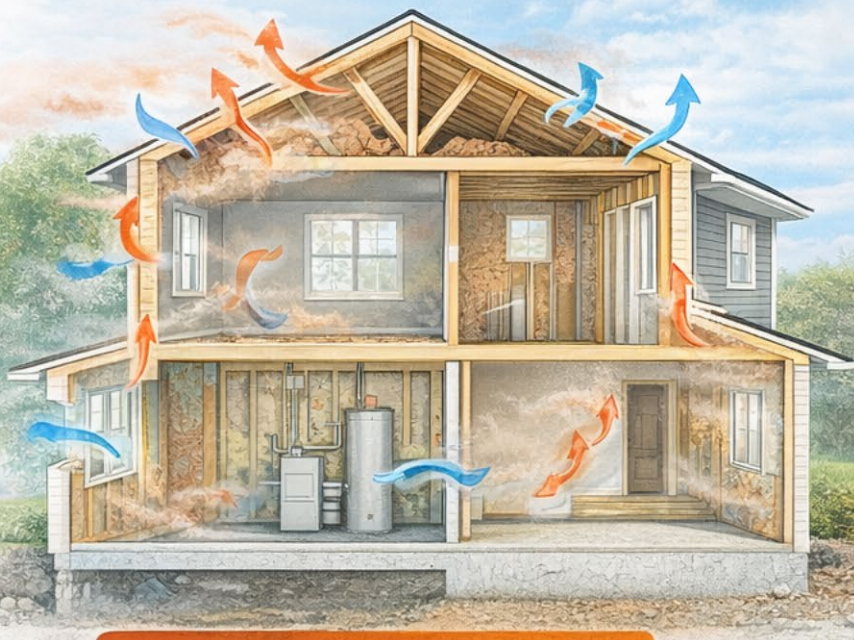


**S-PANELS**  
**OMAHA**

SMART BUILDING. SIMPLIFIED.









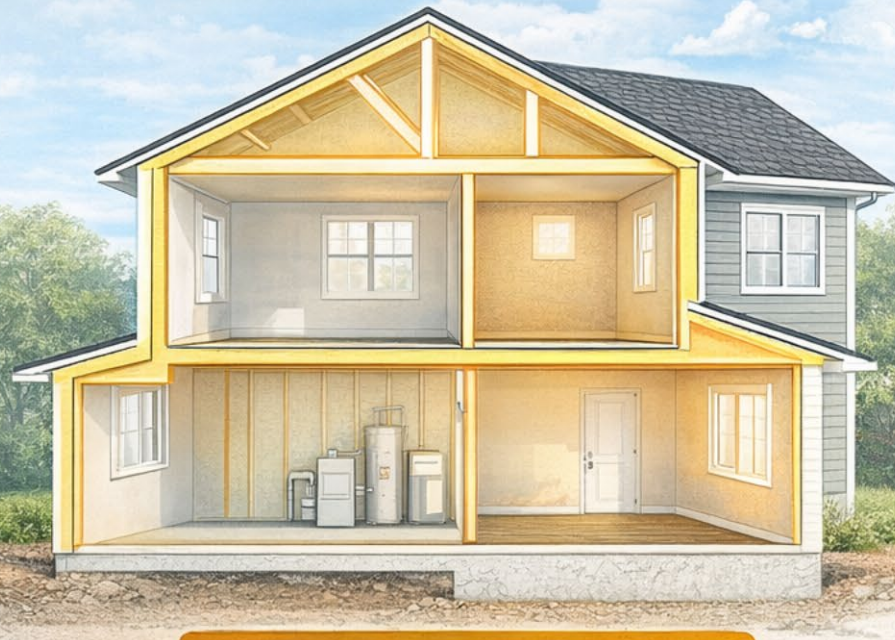
# The building envelope is where performance is won or lost.



## Air Leakage




Poorly sealed stick-framed envelope

-  Air leaks
-  Thermal bridging
-  Thermal bridging
-  Drafts & moisture
-  Escaping Warm Air
-  Airtight Envelope



## Sealed & Controlled

Airtight, SIP-built envelope

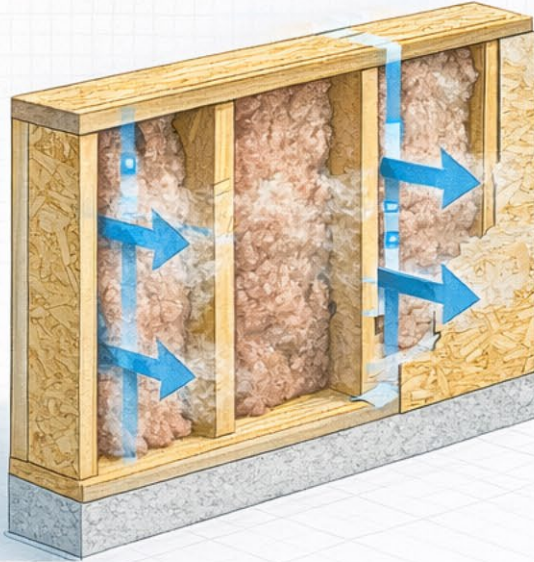
-  Continuous insulation
-  Fewer thermal bridges
-  Airtight Envelope

 **S-PANELS**  
OMAHA  
SMART BUILDING. SIMPLIFIED.



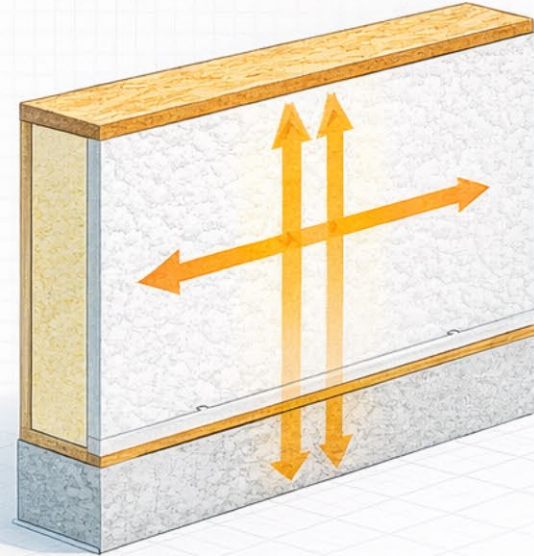
# Stick Framing or SIPs?

## Stick Framing



- ✓ Thermal bridging
- ✓ Gaps & compression
- ✓ Inconsistent on-site

## SIPs



- ✓ Continuous insulation
- ✓ No gaps or voids
- ✓ Factory precision

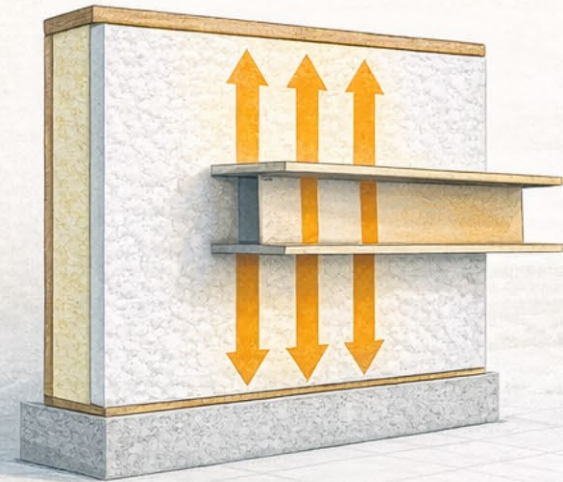
# Engineered for Strength

## Stick Framed

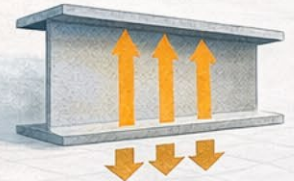


- ✓ Lower racking strength
- ✓ Greater deflection
- ✓ Uneven load distribution

## SIPs



- ✓ High racking strength
- ✓ Reduced deflection
- ✓ Even load distribution

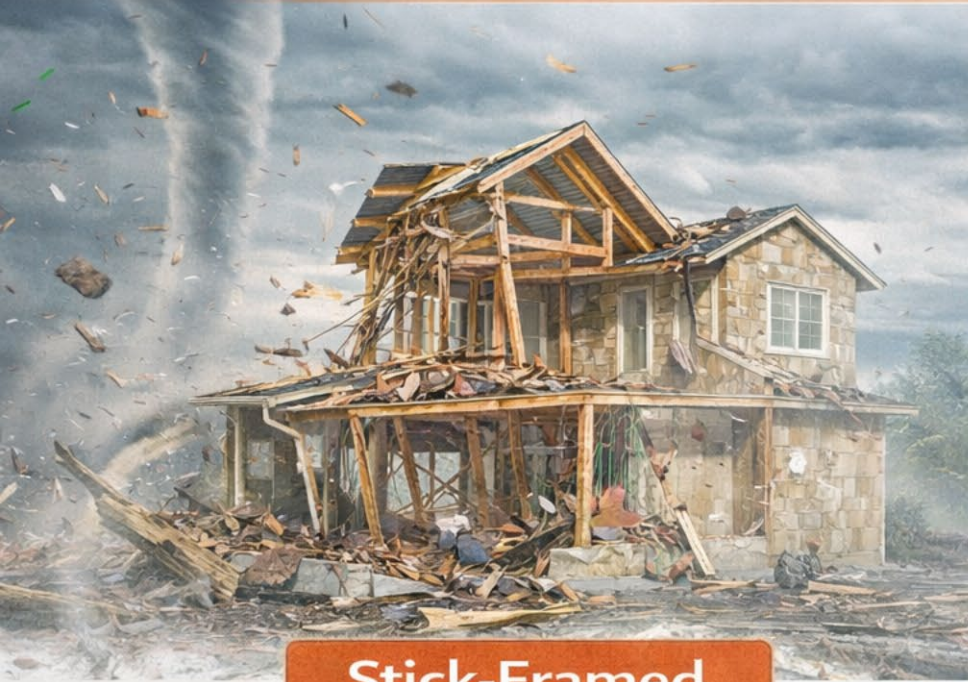


**S-PANELS**  
**OMAHA**

SMART BUILDING. SIMPLIFIED.

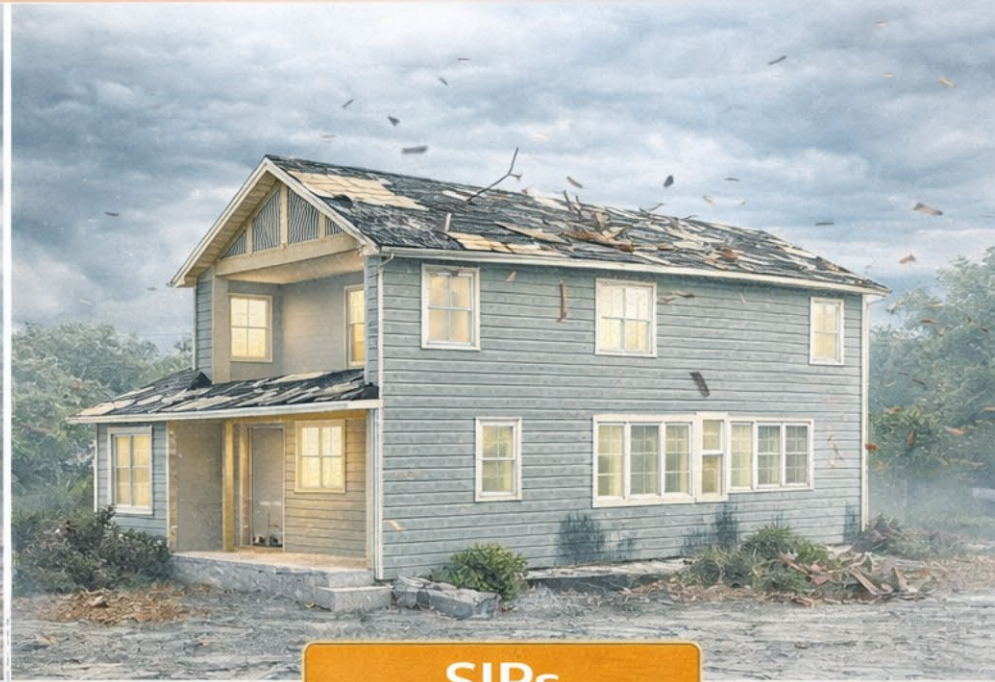


# Resilience isn't optional anymore.



**Stick-Framed**

- ✓ Weak joint separation
- ✓ Severe damage and collapse
- ✓ Compromised interior



**SIPs**

- ✓ Stays structurally intact
- ✓ Limited damage
- ✓ Dry, undamaged interior



# What About Energy Efficiency?

Stick-Framed



- ✓ More energy loss
- ✓ Higher energy bills

SIPs



- ✓ Less energy loss
- ✓ Dry interior
- ✓ Solid structure



# Airtight & Pest Resistant

Stick-Framed



SIPs



- ✓ Gaps and cracks
- ✓ Entry points for pests



- ✓ No gaps to penetrate
- ✓ Pests can't infiltrate



# Find Out More About SIPs!

Contact S-Panels Omaha Today



402 208-2660



phillip.henderson  
@spanels.com

or visit:

[www.spanels.com](http://www.spanels.com)



**FREE**  
CONSULTATION



**S-PANELS**  
**OMAHA**

SMART BUILDING. SIMPLIFIED.