

RV generator set Quiet Gasoline™ Series RV QG 7000



Cummins Onan

Performance you rely on.™



Features and benefits

- Quietest generator set in its class.
- Exceptionally low vibration levels.
- Integrated design with enclosed muffler for easy installation.
- Self-diagnostic capability to simplify troubleshooting.
- Runs two air conditioners with power to spare.
- Digital voltage regulation for stability as appliance loads change.
- 3-year limited warranty, lifetime drive warranty.
- Gasoline or LP fueled.

Weight, size and sound level

Weight	290 lbs	(132 kg)
Length	33.6 in	(853 mm)
Width	22.2 in	(563 mm)
Height	16.7 in	(425 mm)
Sound	67 dB(A)	Readings at 10 ft (3 m) half load

- Meets National Park Service sound level requirements (60 dB(A) @ 50 ft) for national park use.
- Typical installation will further reduce sound level.

Models and ratings

Model	Fuel	Hz	RPM	Watts	Voltage	Amps	Phase	Circuit breaker
7 HGJAB-1036	Gasoline	60	2880	7000	120	58.3	1	(1) 30 A, (1) 20 A HACR
7 HGJAB-900	Gasoline	60	2880	7000	120	58.3	1	(2) 30 A
7 HGJAB-6756*	Gasoline	60	2880	7000	120	58.3	1	(2) 30 A
6.5 HGJAB-1272	LP vapor	60	2880	6500	120	54.2	1	(1) 30 A, (1) 20 A HACR
6.5 HGJAB-904	LP vapor	60	2880	6500	120	54.2	1	(2) 30 A

Ambient conditions for rated power output with muffler and RV enclosure, per ISO 8528-1:

- Temperature: 77° F (25° C)
- Altitude: 500 ft (152.4 m), (99 kPa dry)

Typical power output change based on ambient conditions:

- Temperature: Power output decreases 1% for every 10° F (5.5° C) increase
- Altitude: Power output decreases 3.5% for every 1000 ft (305 m) increase

Ratings represent minimums. Actual performance may be significantly higher based on installation and operating conditions.

* Evaporative spec: For trailer applications required to meet Tier III Evaporative Emissions of the California Air Resources Board.

Operating temperature range

	Low	High
Gasoline	-20° F (-29° C)	120° F (49° C)
LP	0° F (-18° C)	120° F (49° C)

- Depends upon LP tank capacity, surface area and butane content of LPG.

Standard features

- Mechanical governor adjustable from service side
- Cummins Onan OHV engine
- Pressurized Thru Flow cooling system
- 4-point focalized mounting system with vibration isolators
- Universal mounting tray with structural capability to support the generator set in RV applications
- Integral USDA Forest Service-approved spark-arrestor muffler
- Replaceable dry element air cleaner
- Integral control box
- Instant one-touch stop switch
- Electronic ignition
- Automatic choke
- Fuel filter
- Electric fuel pump (gasoline), electric fuel solenoid (LPG)
- Positive fuel shutoff (3 psi)
- Enclosed muffler
- Sound-attenuated housing
- Remote waterproof connector
- Spin-on, full-flow oil filter
- Low oil pressure protection
- Over/under speed protection
- Overcurrent protectors (see Models and ratings section)
- Low power factor field overcurrent protection
- 120 in (3 m) generator set output leads
- Digital voltage regulation

Average fuel consumption:

Gasoline	No load
60 Hz	0.4 Gal/h (1.6 L/h)
LPG	No load
60 Hz	0.5 Gal/h (2.2 lb/h) 1.0 kg/h

Engine details

Model: Cummins Onan OHV EH65V gasoline engine

Design: 4-cycle, OHV, 90 degrees V-Twin

Compression ratio: 8:1

Displacement: 39.8 in³ (653 cm³)

Maximum power: Gasoline-fueled models: 14.0 bhp (10.5 kW), LP-fueled models: 11.6 bhp (8.6 kW)

Cooling: Centrifugal blower, generator set mounted for high effectiveness, pressurized system, vertical flow

Cooling air volume: Air flow includes engine, generator set control cooling air flow

60 Hz at 500 ft³/min (14.2 m³/min)

50 Hz at 417 ft³/min (11.8 m³/min)

Fuel system: Replaceable dry element air cleaner

- (Gasoline) side-draft carburetor

- Electronic fuel pump with positive fuel shutoff (3 psi), fuel lift 3 ft (0.9 m)

- Automatic choke with vacuum pull-off

- Combustion air volume at rated load:

18.8 ft³/min (0.53 m³/min)

- (LPG) side-draft mixer with demand regulator

- Combustion air volume at rated load:

17.5 ft³/min (0.49 m³/min)

Ignition system: Electronic magneto type with resistor plugs

Starting system: Remote, 12 V, 3-wire, negative ground automotive type starter with steel pinion and ring gear, automatic start disconnect, connector for remote start cable, start-stop rocker switch mounted on set control

Lubrication: Full pressure positive displacement lube oil pump, spin-on, full flow lube oil filter, low oil pressure shutdown, dipstick

Oil capacity: 2.0 qt (1.9 L) including filter

Cylinder crankcase: Alloy aluminum with iron cylinder liners cast into the block, aluminum oil base

Cylinder head: Aluminum, OHV

Half load	Full load
0.7 Gal/h (2.8 L/h)	1.2 Gal/h (4.6 L/h)

Half load	Full load
0.8 Gal/h (3.5 lb/h) 1.8 kg/h	1.2 Gal/h (5.3 lb/h) 2.4 kg/h

Alternator details

Design: Cummins Onan revolving field, AC, 2-pole self-excited, two bearing design

Insulation system and temperature rise: Meets ANSI/RVIA EGS-1 and CSA Electrical Bulletin 946 requirements

Cooling: Direct drive centrifugal blower; cast aluminum housing for excellent heat transfer

Excitation: Digital voltage regulation

Rotor: Laminated electrical steel assembly press-fitted to shaft, balanced; heavy insulated copper wire windings; optimized air gap for improved waveform and motor starting

Stator: Laminated electrical steel assembly, skewed for improved waveform; heavy insulated copper wire windings

DC brushes: Electrographite; long life

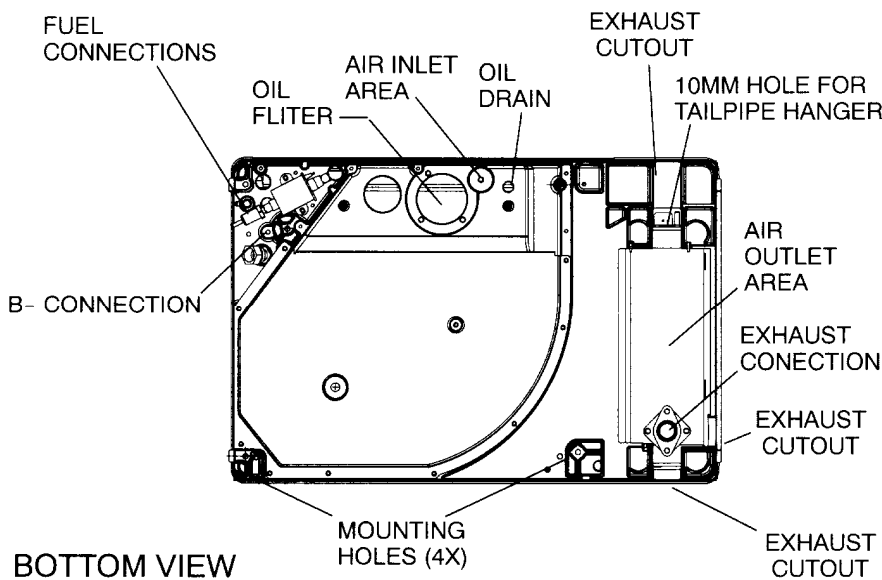
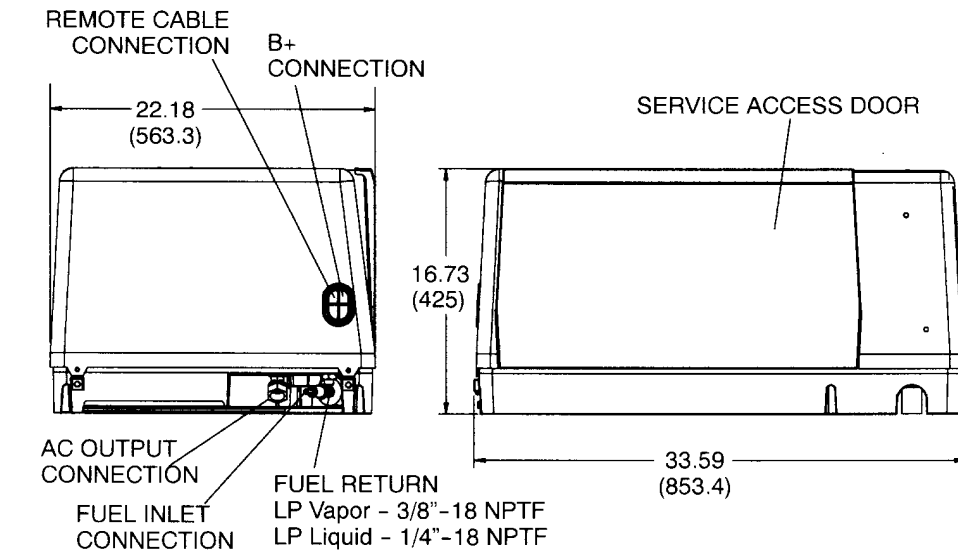
Bearings: Double-sealed pre-lubricated ball bearings

Generator set performance

Air Conditioner Starting: Two 13500 Btu air conditioners with 3000 W base load at 100° F (38° C) at 500 ft (152.4) elevation

Frequency and voltage regulation: No load to full load, frequency <5%, voltage 1.1%

Basic dimensions



Note: This outline drawing is provided for general reference only and is not intended for design or installation. For more information see Operation and Installation manuals or obtain drawing 500-3234 and wiring diagram from your distributor/dealer.

Accessories

- Remote start/stop rocker switch (P/N 300-5331)
- Remote control with start/stop switch and running time meter (P/N 300-5332)
- Remote control w/start/stop switch and DC voltmeter (P/N 300-5333)
- Remote control plug and wire harness: 10 ft (P/N 338-3489-01), 30 ft (P/N 338-3489-02)
- Battery, 12 V, 360 cold cranking amps at 0° F (-18° C)
- LPG vapor fuel conversion kit, (P/N 148-1161)
- Under floor mounting kit (P/N 405-6699)
- Installation template (P/N 539-2057)
- Tailpipe kit: 22 in (P/N 155-3481-01), 26 in (P/N 155-3481-02)
- Exhaust tube, straight with flanged end: 3 in (P/N 155-2610), (7 in - P/N 155-2424), 12.5 in (P/N 155-2610-01)
- Energy command auto generator start EC-30 (P/N 018-02030)
- Energy command remote start/stop with diagnostics EC-20 (P/N 018-02020)
- Energy command wireless start/stop EC-15W (P/N 018-02015)

Testing for RV application

- Tested at extremes of temperature -20° F (-29° C) to 120° F (49° C) for starting and operation
- Tested with RV loads, air conditioners, microwaves, converter, TVs, VCRs
- Tested installed Cummins-owned RVs used for product development testing
- Tested in high humidity conditions
- Tested in salt spray conditions
- Tested in heavy airborne dust conditions
- Field test program
- 60 Hz (120 V only) models listed by SGS United States Testing Company, Inc. per ANSI/RVIA EGS-1 and CSA-certified per Electrical Bulletin 946
- This generator set was designed and manufactured in facilities certified to ISO 9001
- 60 Hz models meet applicable U.S. EPA and California emissions standards



Warranty policy

This limited warranty covers virtually everything except routine maintenance for the first two years you own your RV generator set, and covers parts and labor on major power train and generator set parts during the third year. In addition, it also includes a free 90-day adjustment policy, which provides that Cummins Inc will make minor adjustments during the first three months you own it - free of charge! Please note: This 3-year limited warranty applies to RV generator sets used in RV applications only, and does not apply to RV generator sets used in commercial mobile applications.

The warranty period for the drive train belt and pulleys on the HGJ series generator sets used in recreational vehicles shall be the life of the generator set. For the original owner, this drive train warranty shall include parts and labor. For succeeding owners, this power train warranty shall cover belt and pulley parts only.



WARNING:

Do not use this generator set on a boat. Such use may violate U.S. Coast Guard regulations, and can result in severe personal injury or death from fire, explosion, electrocution, or carbon monoxide poisoning.



WARNING:

Back feed to a utility system can cause electrocution and/or property damage. Do not connect to any building electrical except through an approved device or after building main breaker is open.

After sale support

Complete line of parts and accessories

Cummins Inc offers replacement and tune-up parts, accessories, oil and maintenance chemicals - all specially designed to help keep your Cummins Onan generator set running at peak performance. Cummins Inc. also provides genuine Onan Green Label Parts™ that exactly match generator set specifications and will help maximize power output and extend the life of your generator set.



Largest distributor/dealer support network

Cummins Onan generator sets are supported by the largest and best trained worldwide certified distributor/dealer network in the industry. This network of knowledgeable Cummins Onan distributor/dealers will help you select and install the right generator set and accessories to meet the requirements of your specific application. This same network offers a complete selection of commonly used generator set maintenance parts, accessories and products plus manuals and specification sheets. Plus, they can answer your questions regarding proper operation, maintenance schedules and more.

Manuals: Operation and installation manuals ship with the generator set. To obtain additional copies or other manuals for this model, see your Cummins Onan distributor/dealer and request the following manual numbers: Operation (983-0101B), Installation (983-0600B), Parts (983-0201D), Service (983-0501D).

To easily locate the nearest Cummins Onan distributor/dealer in your area, or for more information, contact us at 1-800-888-6626 (or 763-574-5000), or visit www.cumminsonan.com.

Contact your distributor/dealer for more information

Cummins Onan

Cummins Power Generation

1400 73rd Ave. NE

Minneapolis, MN 55432 USA

Phone 1 763 574 5000

Toll-free 1 800 888 6626

Fax 1 763 574 5298

Email www.cumminsonan.com/contact

www.cumminsonan.com

Cummins®, Onan®, the "C" logo, Performance you rely on.™ and Quiet Gasoline™ are servicemarks and/or registered trademarks of Cummins Inc. Specifications subject to change without notice. ©2007 Cummins Power Generation. All Rights Reserved.

A-1426f (03/07)



RV generator set

Quiet Diesel™ Series

RV QD 6000/8000



Cummins Onan

Performance you rely on.™



Features and benefits

- Computer-controlled variable speed operation matches engine speed to load demand, minimizing noise level.
- Special sound-controlling housing encloses cooling system and muffler.
- Three-point, fully focalized mounting system reduces vibration.
- Self-diagnostic capabilities simplify troubleshooting.
- Easy, accessible maintenance points.
- Runs two 15000 Btu air conditioners with power to spare.
- High quality, pure sine wave electrical output helps prevent damage to appliances.

Weight, size and sound level

Weight	420 lbs	(191 kg)
Length	36.3 in	(922 mm)
Width	23.6 in	(599 mm)
Height	22.3 in	(566 mm)
Sound	66 dB(A)	Readings at 10 ft (3 m) half load**
		- Meets National Park Service sound level requirements (60 dB(A) @ 50 ft) for use in national parks.
		- Typical installation will further reduce sound level.

Models and ratings

Model	Fan	Hz	Watts	Voltage	Amps	Phase	Circuit breaker
8.0 HDKAK/1046	Internal	60	8000	120	66.6	1	35 A, 2-pole
6.0 HDKAH-1044	Internal	60	6000	120	50	1	30 A, 2-pole

Ambient conditions for rated power output with muffler and RV enclosure, per ISO 8528-1:

- Temperature: 77° F (25° C)
- Altitude: 500 ft (152.4 m), (99 kPa dry)

Typical power output change based on ambient conditions:

- Temperature: Power output decreases 1% for every 10° F (5.5° C) increase
- Altitude: Power output decreases 3.5% for every 1000 ft (305 m) increase

Ratings represent minimums. Actual performance may be significantly higher based on installation and operating conditions.

Standard features

- 3-cylinder diesel engine
- Permanent magnet alternator
- Pure sine wave output
- Digital voltage regulation w/no adjustments required
- Bottom air inlet and outlet
- Integral enclosed muffler with stationary exhaust pipe connection point
- USDA-approved spark arrestor
- Internal radiator
- Sound-insulated cover with cooling air inlet and outlet ducts
- Intake silencer
- Heavy-duty air cleaner
- Maintenance-free electronic governor
- Fused DC circuits
- Meets applicable U.S. EPA and California emissions standards
- Waterproof connector for remote operation
- Focalized mounting system
- Overvoltage, low oil pressure, over temp, over speed and overload safeties
- Bulkhead type connections for fuel and battery
- Terminal block connection for AC output
- Electric fuel pump
- Full flow oil and fuel filter
- Service and maintenance from below
- Automatic timed glow plugs for quick, easy start
- Instant one-touch stop
- Hour meter

Average fuel consumption:

Diesel	No load	Half load	Full load
8.OHDKAK	0.13 Gal/h (0.49 L/h)	0.49 Gal/h (1.85 L/h)	1.02 Gal/h (3.86 L/h)
6.OHDKAH	0.13 Gal/h (0.49 L/h)	0.40 Gal/h (1.5 L/h)	0.70 Gal/h (2.65 L/h)

Control system

- Microprocessor control
- Integrated generator set and engine control
- User and service personnel accessible diagnostics
- Fused DC circuits
- Overvoltage safety
- Low oil pressure safety
- Over speed safety
- Overload safety
- Automatic timed glow plugs
- One-touch stop

Engine details

Design: 4-cycle, liquid-cooled diesel engine

Cylinders: 3, inline vertical

Bore: 2.64 in (67 mm)

Stroke: 2.68 in (68 mm)

Displacement: 43.88 cu in (719 cc)

Compression ratio: 23 to 1

Lube oil capacity: 2.8 qt (2.61 L)

Cooling system capacity: 4 qt (4.21 L)

Power (max) at 3600 rpm: 16.6 hp (12.4 kW) SAE net intermittent

Starting system: Remote, 12 V

Fuel injection pump: Bosch MD type

Combustion chamber: Spherical (TVCS)

Alternator details

Design: Cummins Onan, permanent magnet

Insulation system: Class H

Exciter system: None

DC brushes: None

Bearings: None

Cooling: Main engine fan cooled

Generator set performance

Voltage regulation no load to full load: $\pm 1\%$

Frequency regulation no load to full load:
 $\pm 0.1\%$

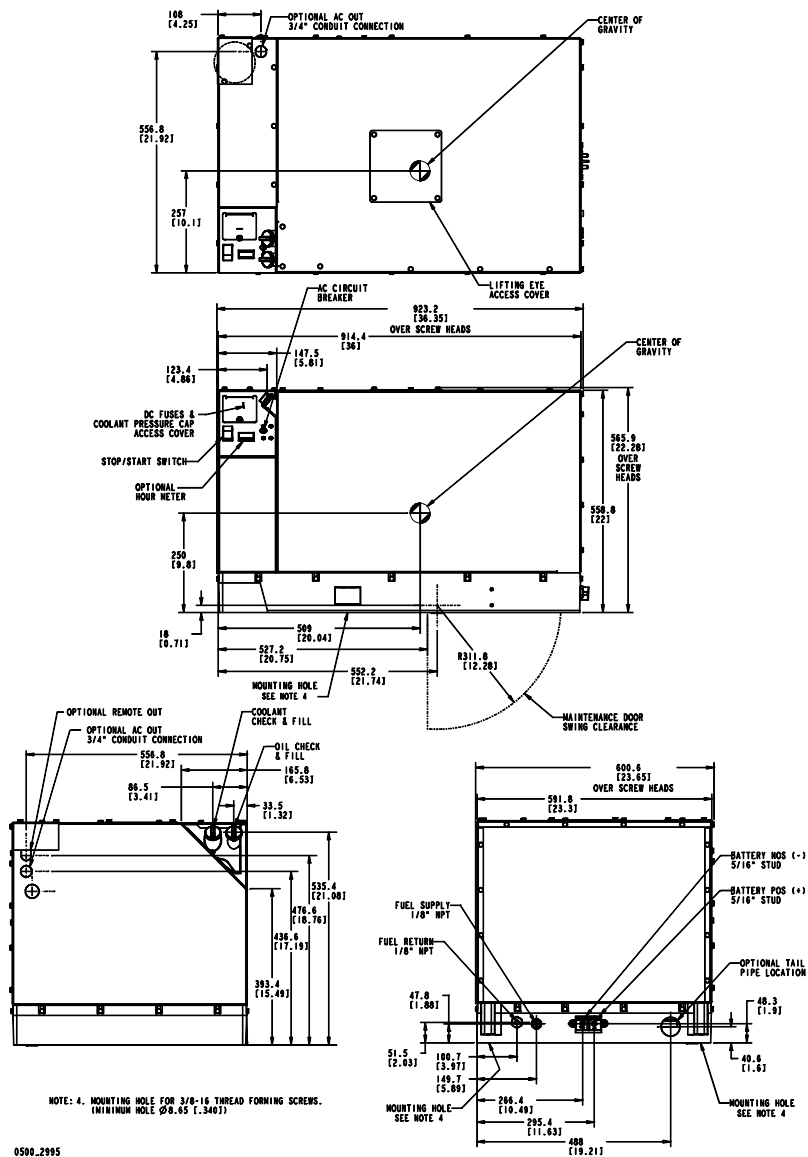
Random frequency variation for constant loads: $\pm 0.5\%$

Random voltage variation for constant loads: $\pm 0.2\%$

Maximum operating ambient: Efficient radiator cooling system permits operation at ambient temperatures to 120° F

Air conditioner operation: Will operate with two 15000 Btu air conditioners and an additional load of up to:
6000 kW - 1600 W at 100° F and 500 ft (152.4 m) altitude
8000 kW - 3100 W at 100° F and 500 ft (152.4 m) altitude

Basic dimensions



Note: This outline drawing is provided for general reference only and is not intended for design or installation. For more information see Operation and Installation manuals or obtain 500-2995 drawing and wiring diagram from your distributor/dealer.

- Conventional compartment mount

Accessories

- Exhaust elbow (P/N 155-2982)
- Exhaust adapter: 7 in (P/N 155-2424), 3 in (P/N 155-2610)
- Battery: 12 V, 475 CCA at 0° F (-17.8° C) (P/N 416-0795)
- Remote wiring harnesses for use with remote panels: 10 ft (P/N 338-3490-01), 30 ft (P/N 338-3490-02)
- Remote control pigtail (P/N 300-4947)
- Remote control panels:
 - Switch only (P/N 300-4942)
 - Switch and hour meter (P/N 300-4943)
 - Switch and DC voltmeter (P/N 300-4944)
 - Full gage panel (P/N 300-5027)
- Energy command auto generator start EC-30 (P/N 018-02030)
- Energy command remote start/stop with diagnostics EC-20 (P/N 018-02020)
- Energy command wireless start/stop EC-15W (P/N 018-02015)

Note: Protected by one or more of the following patents: US 5,006,781, US 5,158,208, US 5,096,153, US 5,175,458, US 5,240,222. Other patents pending.

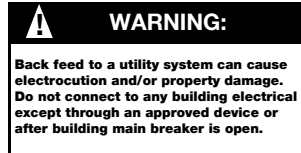
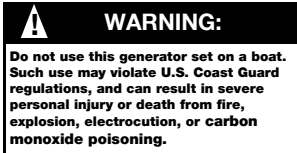
Testing for RV application

- Tested at extremes of temperature -20° F (-29° C) to 120° F (49° C) for starting and operation
- Tested with RV loads, air conditioners, microwaves, converter, TVs, VCRs
- Tested installed; Cummins RVs used for product development testing
- Tested in high humidity conditions
- Tested in salt spray conditions
- Tested in heavy airborne dust conditions
- Field test program
- 60 Hz (120 V only) models listed by SGS United States Testing Company, Inc. per ANSI/RVIA EGS-1 and CSA-certified per Electrical Bulletin 946
- This generator set was designed and manufactured in facilities certified to ISO 9001
- 60 Hz models meet applicable U.S. EPA and California emissions standards



Warranty policy

This limited warranty covers virtually everything except routine maintenance for the first two years you own your RV generator set, and covers parts and labor on major power train and generator set parts during the third year. In addition, it also includes a free 90-day adjustment policy, which provides that Cummins Inc will make minor adjustments during the first three months you own it - free of charge! Please note: This 3-year limited warranty applies to RV generator sets used in RV applications only, and does not apply to RV generator sets used in commercial mobile applications.



After sale support

Complete line of parts and accessories

Cummins Inc offers replacement and tune-up parts, accessories, oil and maintenance chemicals - all specially designed to help keep your Cummins Onan generator set running at peak performance. Cummins Inc. also provides genuine Onan Green Label Parts™ that exactly match generator set specifications and will help maximize power output and extend the life of your generator set.



Largest distributor/dealer support network

Cummins Onan generator sets are supported by the largest and best trained worldwide certified distributor/dealer network in the industry. This network of knowledgeable Cummins Onan distributor/dealers will help you select and install the right generator set and accessories to meet the requirements of your specific application. This same network offers a complete selection of commonly used generator set maintenance parts, accessories and products plus manuals and specification sheets. Plus, they can answer your questions regarding proper operation, maintenance schedules and more.

Manuals: Operation and installation manuals ship with the generator set. To obtain additional copies or other manuals for this model, see your Cummins Onan distributor/dealer and request the following manual numbers: Operation (981-0161), Installation (981-0623), Parts (981-0200), Service (981-0522).

To easily locate the nearest Cummins Onan distributor/dealer in your area, or for more information, contact us at 1-800-888-6626 (or 763-574-5000), or visit www.cumminsonan.com.

Contact your distributor/dealer for more information

Cummins Onan

Cummins Power Generation

1400 73rd Ave. NE
Minneapolis, MN 55432 USA
Phone 1 763 574 5000
Toll-free 1 800 888 6626
Fax 1 763 574 5298
Email www.cumminsonan.com/contact
www.cumminsonan.com

Cummins®, Onan®, the "C" logo, Performance you rely on.™ and Quiet Diesel™ are servicemarks and/or registered trademarks of Cummins Inc. Specifications subject to change without notice.
©2007 Cummins Power Generation. All Rights Reserved.
A-1408i (01/07)



RV generator set

Quiet Diesel™ Series

RV QD 10000/12500



Cummins Onan



Performance you rely on.™

Features and benefits

- Computer-controlled constant speed operation - quiet diesel performance for larger RVs.
- Special sound-controlling housing encloses cooling system and muffler.
- Three-point, fully focalized internal mounting system reduces vibration.
- Self-diagnostic capabilities simplify troubleshooting.
- Easy, accessible maintenance points.
- Runs two or three rooftop air conditioners with power to spare.
- High quality, pure sine wave electrical output helps prevent damage to appliances.

Weight, size and sound level

Weight	765 lbs	(347 kg) 10.0 kW
	770 lbs	(349 kg) 12.5 kW
Length	41.4 in	(1051 mm)
Width	24.5 in	(622 mm)
Height	27 in	(685 mm)
Sound	68 dB(A)	(readings at 10 ft (3 m) half load)
	- Meets National Park Service sound level requirements (60 dB(A) @ 50 ft) for national park use.	
	- Typical installation will further reduce sound level.	

Models and ratings

Model	Fan	Hz	Watts	Voltage	Amps	Phase	Circuit breaker
12.5 HDKCB-11506	Internal	60	12500	120/240	104.0/52.0	1	50 A, 2-pole
10.0 HDKCA-11506	Internal	60	10000	120/240	83.3/41.7	1	45 A, 2-pole

Ambient conditions for rated power output with muffler and RV enclosure, per ISO 8528-1:

- Temperature: 77° F (25° C)
- Altitude: 500 ft (152.4 m), (99 kPa dry)

Typical power output change based on ambient conditions:

- Temperature: Power output decreases 1% for every 10° F (5.5° C) increase
- Altitude: Power output decreases 3.5% for every 1000 ft (305 m) increase

Ratings represent minimums. Actual performance may be significantly higher based on installation and operating conditions.

Standard features

- 3 cylinder diesel engine
- Brush type AC alternator
- Digital voltage regulation w/no adjustments required
- Bottom air inlet and outlet
- Integral enclosed muffler with stationary exhaust pipe connection point
- USDA-approved spark arrestor
- Internal radiator
- Sound insulated cover with cooling air inlet and outlet ducts
- Intake silencer
- Heavy-duty air cleaner
- Maintenance-free electronic governor
- Hour meter
- Meets applicable U.S. EPA and California emissions standards
- Waterproof connector for remote operation
- Focalized mounting system
- Over voltage, low oil pressure, over temp, over speed, overload and AC alternator over temp safeties
- Bulkhead type connections for fuel and battery
- Terminal block connection for AC output
- Electric fuel pump
- Fuel filter
- Full flow oil and fuel filter
- Service and maintenance through service doors
- Automatic timed glow plugs for quick easy start
- Instant one-touch stop

Average fuel consumption:

Diesel	No load	Half load	Full load
10.0HDKCA	0.1 Gal/h (0.4 L/h)	0.43 Gal/h (1.63 L/h)	1.01 Gal/h (3.8 L/h)
12.5HDKCB	0.1 Gal/h (0.4 L/h)	0.48 Gal/h (1.8 L/h)	1.2 Gal/h (4.5 L/h)

Alternator details

Design: Cummins Onan brush type, drip-proof construction

Insulation system: Class H per NEMA MGI-1.65 and BS 2757, insulating varnish conforms to MIL-1-24092, Grade CB, Class 155C

Exciter system: Electronite voltage regulator

Bearings: Double sealed, pre-lubricated ball bearing

Cooling: Direct drive centrifugal blower; cast aluminum housing for excellent heat transfer

Control system

Microprocessor control

Integrated generator set and engine control

User and service personnel accessible diagnostics

Over voltage, over speed and overload safety

Low oil pressure safety

AC alternator over temp safety

Automatic timed glow plugs

One touch stop

Engine details

Design: 4-cycle, liquid-cooled diesel engine

Cylinders: 3, inline vertical

Bore: 3.43 in (87.0 mm)

Stroke: 3.64 in (92.4 mm)

Displacement: 100.5 cu in (1647 cc)

Compression ratio: 23 to 1

Lube oil capacity: 5.9 qt (5.6 L)

Cooling system capacity: 6.6 qt (6.2 L)

Power (max) at 1800 rpm: 27 hp (20.2 kW) SAE net intermittent

Starting system: Remote, 12 V

Fuel injection pump: Zexel, licensed Bosch PFR

Combustion chamber: IDI

Generator set performance

Voltage regulation no load to full load: $\pm 2\%$

Frequency regulation no load to full load:

$\pm 0.1\%$

Random frequency variation for constant loads:

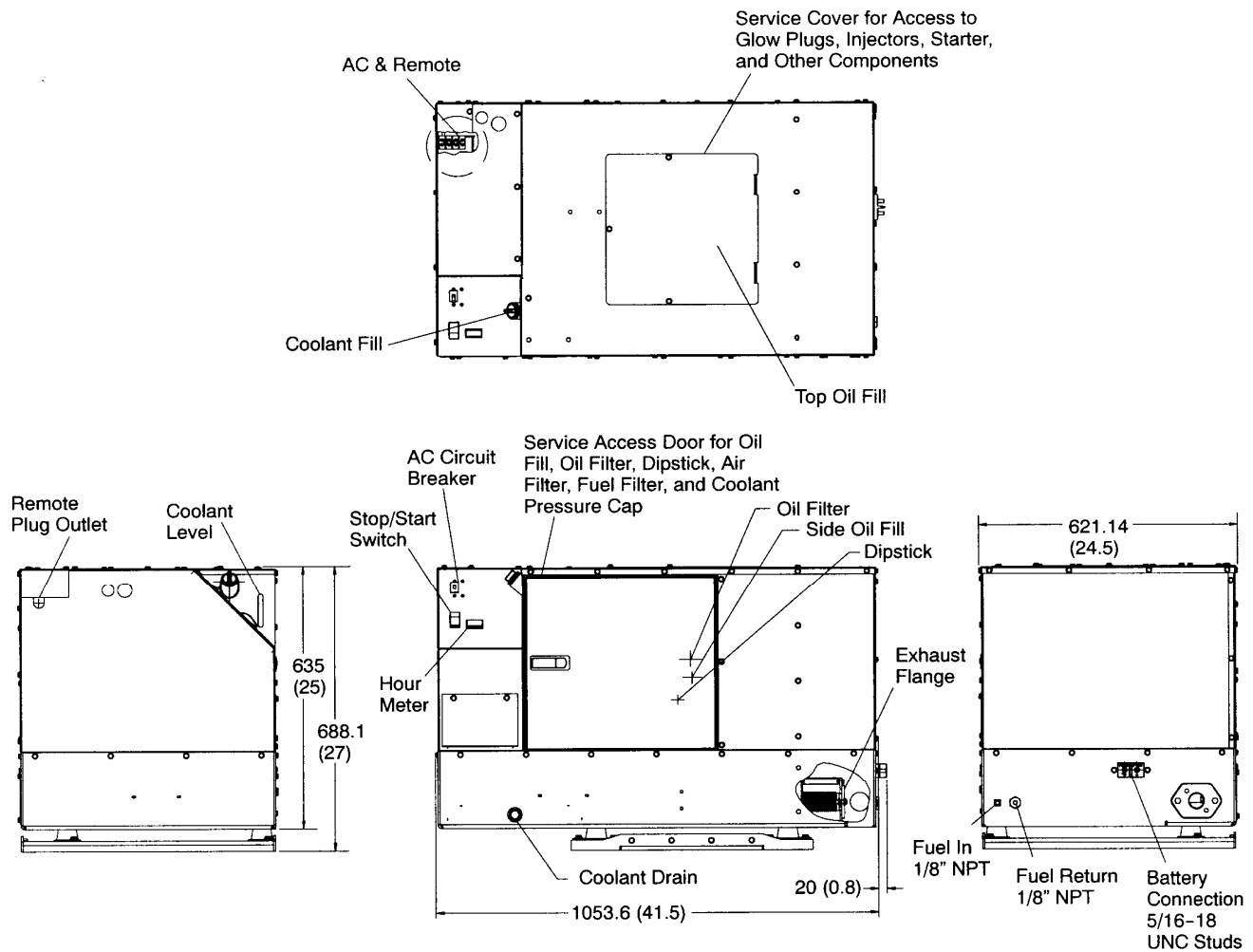
$\pm 0.6\%$

Random voltage variation for constant loads:

$\pm 0.5\%$

Air conditioner operation: Will operate with three 15000 Btu air conditioners and an additional load of up to 4000 W at 100° F and 500 ft (152.4 m) altitude

Basic dimensions



Note: This outline drawing is provided for general reference only and is not intended for design or installation. For more information see Operation and Installation manuals or obtain 500-4040 drawing and wiring diagram from your distributor/dealer.

Accessories

- Exhaust elbow (P/N 155-3194)
- Exhaust adapter - 7 in (P/N 155-2424)
- Exhaust adapter - 3 in (P/N 155-2610)
- Remote wiring harnesses for use with remote panels:
 - 10 ft (P/N 338-3490-01)
 - 30 ft (P/N 338-3490-02)
- Remote control pigtail (P/N 300-4947)
- Remote control panels:
 - Switch only (P/N 300-4942)
 - Switch and hour meter (P/N 300-4943)
 - Switch and DC voltmeter (P/N 300-4944)
- Energy command auto generator start EC-30 (P/N 018-02030)
- Energy command remote start/stop with diagnostics EC-20 (P/N 018-02020)
- Energy command wireless start/stop EC-15W (P/N 018-02015)

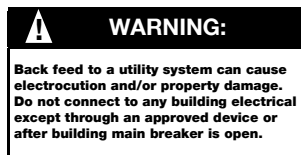
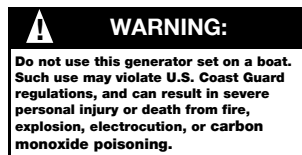
Testing for RV application

- Tested at extremes of temperature -20° F (-29° C) to 120° F (49° C) for starting and operation
- Tested with RV loads, air conditioners, microwaves, converter, TVs, VCRs
- Tested installed. Cummins Onan RVs used for product development testing
- Tested in high humidity conditions
- Tested in salt spray conditions
- Tested in heavy airborne dust conditions
- Field test program
- 60 Hz (120 V only) models listed by SGS United States Testing Company, Inc. per ANSI/RVIA EGS-1 and CSA-certified per Electrical Bulletin 946
- This generator set was designed and manufactured in facilities certified to ISO 9001
- 60 Hz models meet applicable U.S. EPA and California emissions standards



Warranty policy

This limited warranty covers virtually everything except routine maintenance for the first two years you own your RV generator set, and covers parts and labor on major power train and generator set parts during the third year. In addition, it also includes a free 90-day adjustment policy, which provides that Cummins Inc. will make minor adjustments during the first three months you own it - free of charge! Please note: This 3-year limited warranty applies to RV generator sets used in RV applications only, and does not apply to RV generator sets used in commercial mobile applications.



After sale support

Complete line of parts and accessories

Cummins Inc offers replacement and tune-up parts, accessories, oil and maintenance chemicals - all specially designed to help keep your Cummins Onan generator set running at peak performance. Cummins Inc. also provides genuine Onan Green Label Parts™ that exactly match generator set specifications and will help maximize power output and extend the life of your generator set.



Largest distributor/dealer support network

Cummins Onan generator sets are supported by the largest and best trained worldwide certified distributor/dealer network in the industry. This network of knowledgeable Cummins Onan distributor/dealers will help you select and install the right generator set and accessories to meet the requirements of your specific application. This same network offers a complete selection of commonly used generator set maintenance parts, accessories and products plus manuals and specification sheets. Plus, they can answer your questions regarding proper operation, maintenance schedules and more.

Manuals: Operation and installation manuals ship with the generator set. To obtain additional copies or other manuals for this model, see your Cummins Onan distributor/dealer and request the following manual numbers: Operation (981-0173), Installation (981-0640), Parts (981-0277), Service (981-0540).

To easily locate the nearest Cummins Onan distributor/dealer in your area, or for more information, contact us at 1-800-888-6626 (or 763-574-5000), or visit www.cumminsonan.com.

Contact your distributor/dealer for more information

Cummins Onan

Cummins Power Generation

1400 73rd Ave. NE
Minneapolis, MN 55432 USA
Phone 1 763 574 5000
Toll-free 1 800 888 6626
Fax 1 763 574 5298
Email www.cumminsonan.com/contact
www.cumminsonan.com

