

TARÇA SQUARE

REIMAGINE
LIVING



RESIDENCES

Q

COMMUNITY.
COMFORT.
CONVENIENCE.



LIVE BETTER.

Welcome to Targa Square, a new vision for better living in the heart of Malta. More than just a property, it is a rare blend of design, lifestyle, and long-term value, where well-being and everyday ease come together.



Targa Square combines contemporary architecture with thoughtful planning to create homes that offer true breathing room — open spaces filled with natural light, a sense of calm amidst the bustle, and the privacy every resident deserves.

Whether you're seeking your next home or a sound investment, Targa Square presents a unique opportunity in today's real estate market, complete with a long list of desirable features and amenities.

Q



As the first medium-rise residential development in San Pawl tat-Tarġa, Tarġa Square features two elegant apartment blocks centred around a landscaped pedestrian open space that fosters both calm and community. The project comprises 136 apartments, featuring a range of 1, 2, and 3-bedroom units, as well as penthouses, all finished with bathrooms and doors.

Q

Beyond the residences, Targa Square integrates essential daily services — an on-site gym, café, restaurant, clinic, childcare centre, and bank — bringing unmatched convenience to residents.



Well-connected,
central location

Bright and spacious 1, 2, and
3-bedroom apartments and
penthouses, sold finished
including bathrooms and doors

3,000 square metres of public
pedestrian open space

Security features including
concierge, CCTV, and
restricted access

Timeless and neutral
design, with natural
finishes and wrap-
around terraces

Artistic installations
throughout the
development

Waste management
through a communal
refuse room

SDA-approved, ideal
for foreign investors

Ample parking spaces
and garages

On-site commercial
amenities, including
a gym, health, dining
and retail outlets, and a
childcare center

Q



To ensure security and peace of mind, concierge services, restricted access, and CCTV are present across both blocks. With full permits in place and Special Designated Area (SDA) status, Targà Square offers foreign investors the prospect of acquiring property in Malta with the same rights as Maltese and EU nationals.

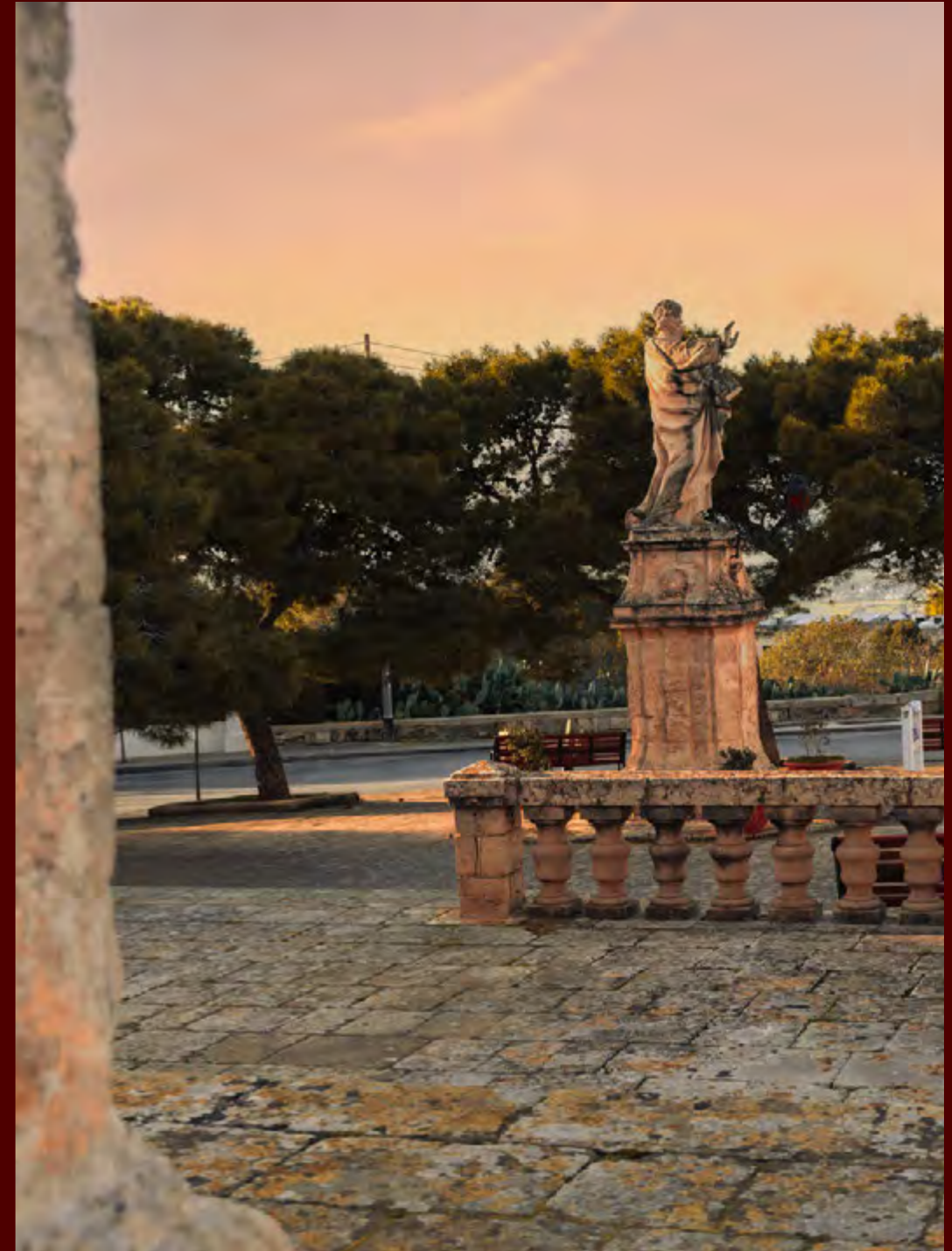
Location

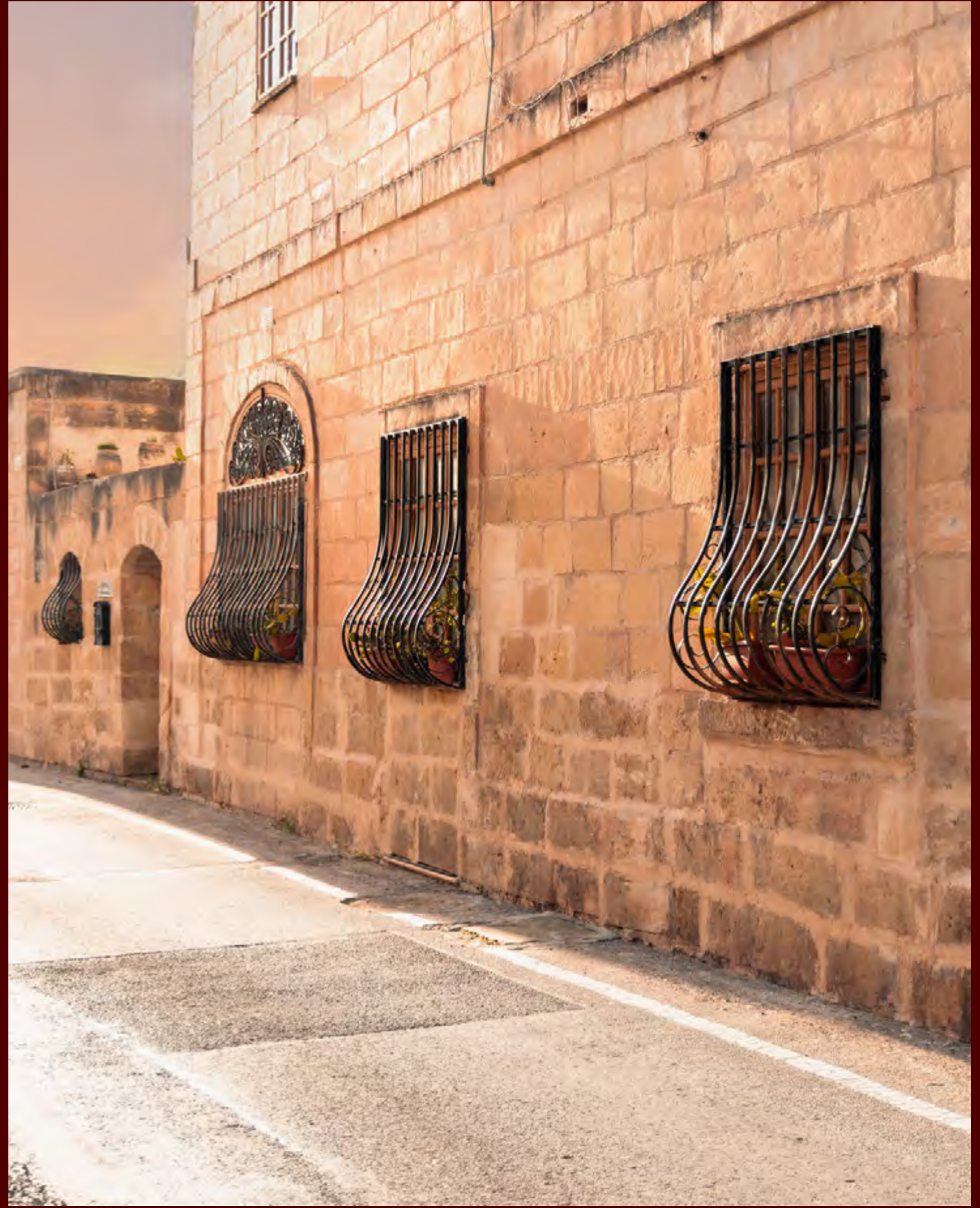
Tarġa Square is named after its location in San Pawl tat-Tarġa, a highly regarded central area of Malta known for its villa-lined streets and quiet atmosphere.

Unlike the busier commercial and tourist-driven parts of the island, this neighbourhood is purely residential, providing peace and privacy in a low-density setting. Its elevated position ensures abundant natural light throughout the day, with many apartments enjoying far-reaching views across Malta, including distant sea views from select upper floors.

Surrounded by open space yet close to arterial roads, residents will enjoy the benefits of being well-connected without the disturbance of a busy road on their doorstep. With Malta's compact size, every destination on the island is easily accessible, making life at Tarġa Square as practical as it is serene.

Q





Way of Life



Q

Imagine waking up in a light-filled, spacious bedroom and stepping onto your terrace to enjoy a slow morning coffee while the island stirs around you. Imagine a home designed with the rhythm of everyday life in mind. Targà Square is more than a collection of apartments - it's a community where everything you need is close at hand.

With health, dining and retail convenience just steps away, Targà Square is a development where every detail encourages movement and enhances your quality of life. Daily routines flow seamlessly, granting comfort and opportunities for connection to each resident.

Families can enjoy easier mornings together ahead of dropping their children off at the childcare centre downstairs. Friends can meet up for a quick coffee with hassle-free parking, while their kids blow off steam in the 3,000 square metre public open space. Professionals can coordinate work-from-home routines with a workout at the nearby gym before returning to a productive afternoon. Whatever your lifestyle, Targà Square allows you to live, work, and entertain without compromise, all within moments of your front door.

**Here, life is quieter,
brighter, and more
balanced.**

**Targà Square is a
place to feel at home,
a place to enjoy Malta
at your own pace.**



Q

Q

Design



Tarğa Square delivers thoughtfully designed residences where space, natural light, and timeless interiors come together in perfect harmony. High-quality finishes, elegant layouts and contemporary artistic installations throughout create an atmosphere of understated sophistication, providing a serene and stylish environment that enhances daily living and elevates your experience of home.





Experience elevated living in this exclusive residence located in the prestigious town of San Pawl tat-Tarġa. Designed with a seamless blend of modern elegance and refined comfort, these apartments offer a sophisticated lifestyle in one of Malta's most desirable neighbourhoods.

West Block

The first medium-rise residential development in central Malta, built around a pedestrian open space. Nestled in the quiet villa area of San Pawl tat-Tarġa, it blends peaceful surroundings with central convenience.

Q

WEST BLOCK

1 BEDROOM



Open-plan kitchen,
living, & dining area



Private Terrace for
Outdoor Living



Laundry Room



2 Bathrooms



Pantry

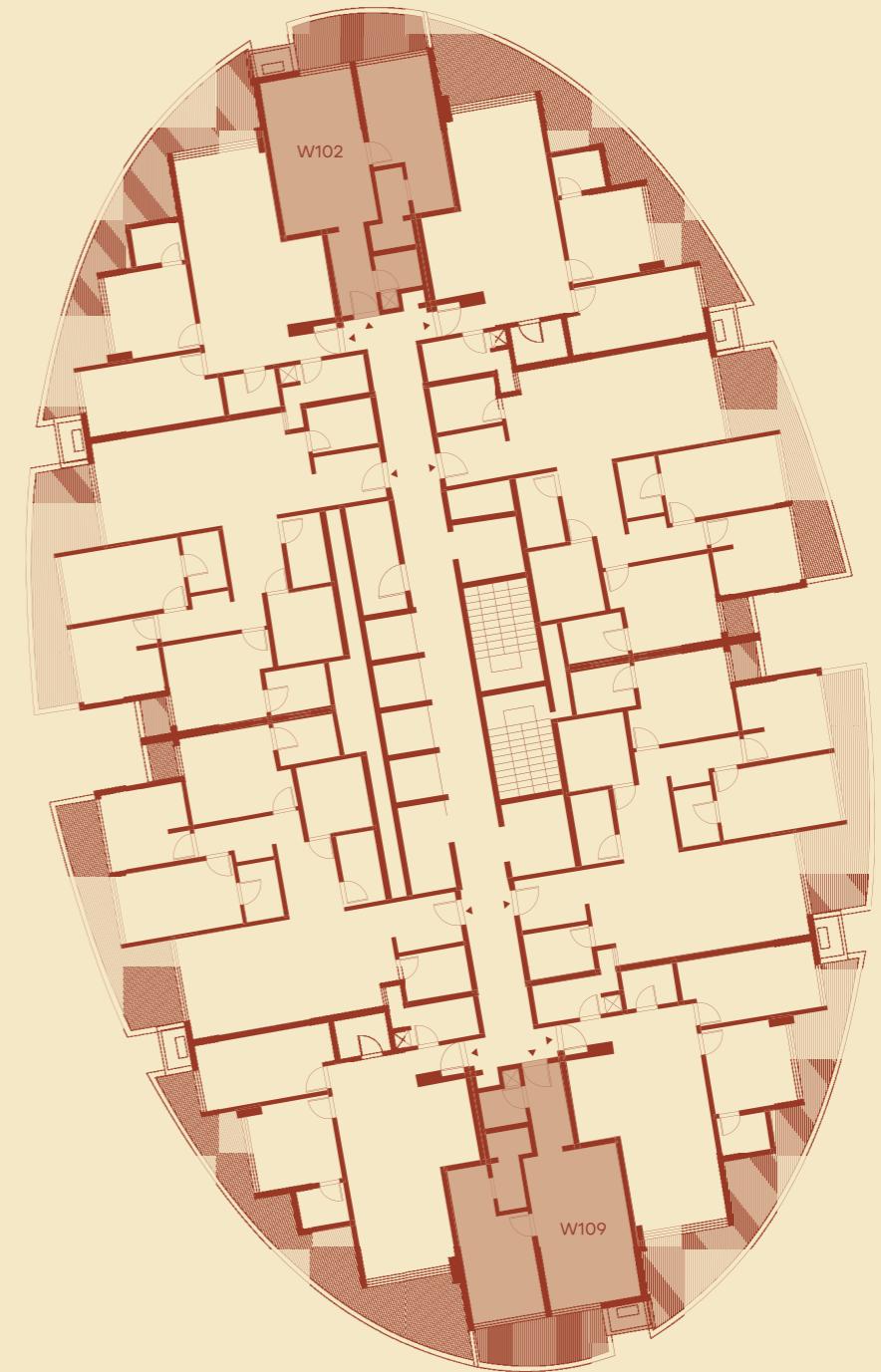


~82 sqm

Type 01
W102 - W802



Type 02
W109 - W809



The highlighted units indicate the location of these 1-Bedroom layouts on each level.

WEST BLOCK

2 BEDROOMS



Open-plan kitchen,
living, & dining area



Private Terrace for
Outdoor Living



Laundry Room



2 Bathrooms

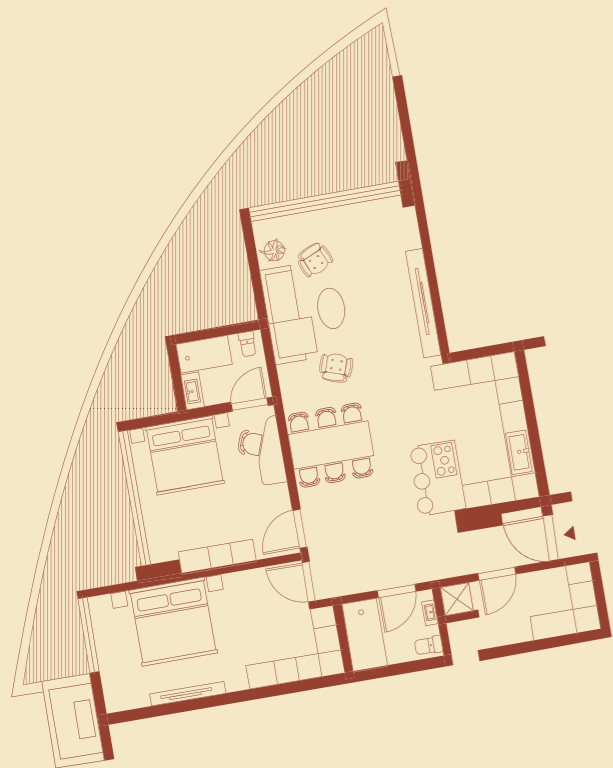


Pantry

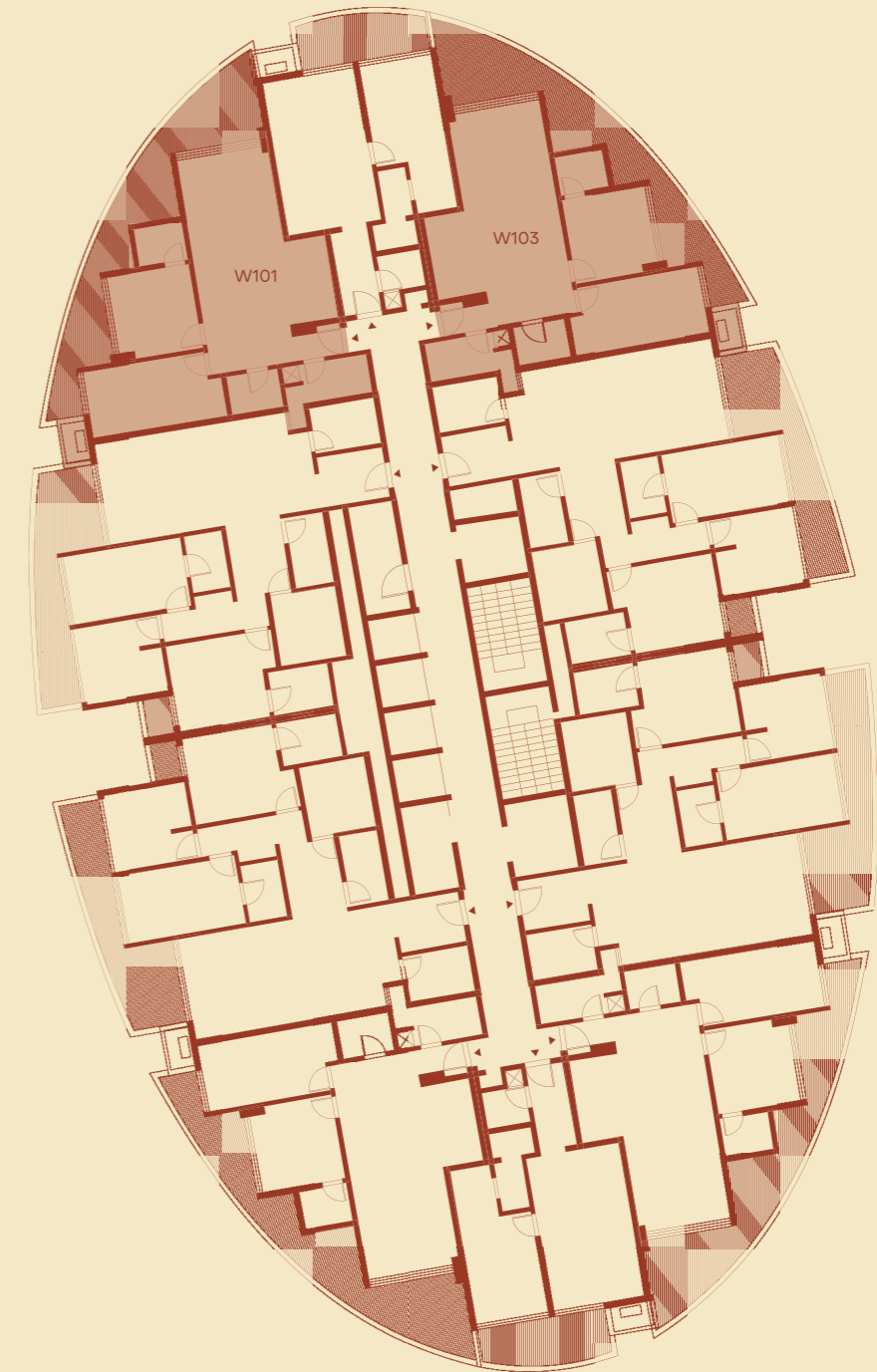


~144 sqm

Type 01
W101 - W801



Type 02
W103 - W803



The highlighted units indicate the location of these 2-Bedroom layouts on each level.

WEST BLOCK

2 BEDROOMS



Open-plan kitchen,
living, & dining area



Private Terrace for
Outdoor Living



Laundry Room



2 Bathrooms



Pantry

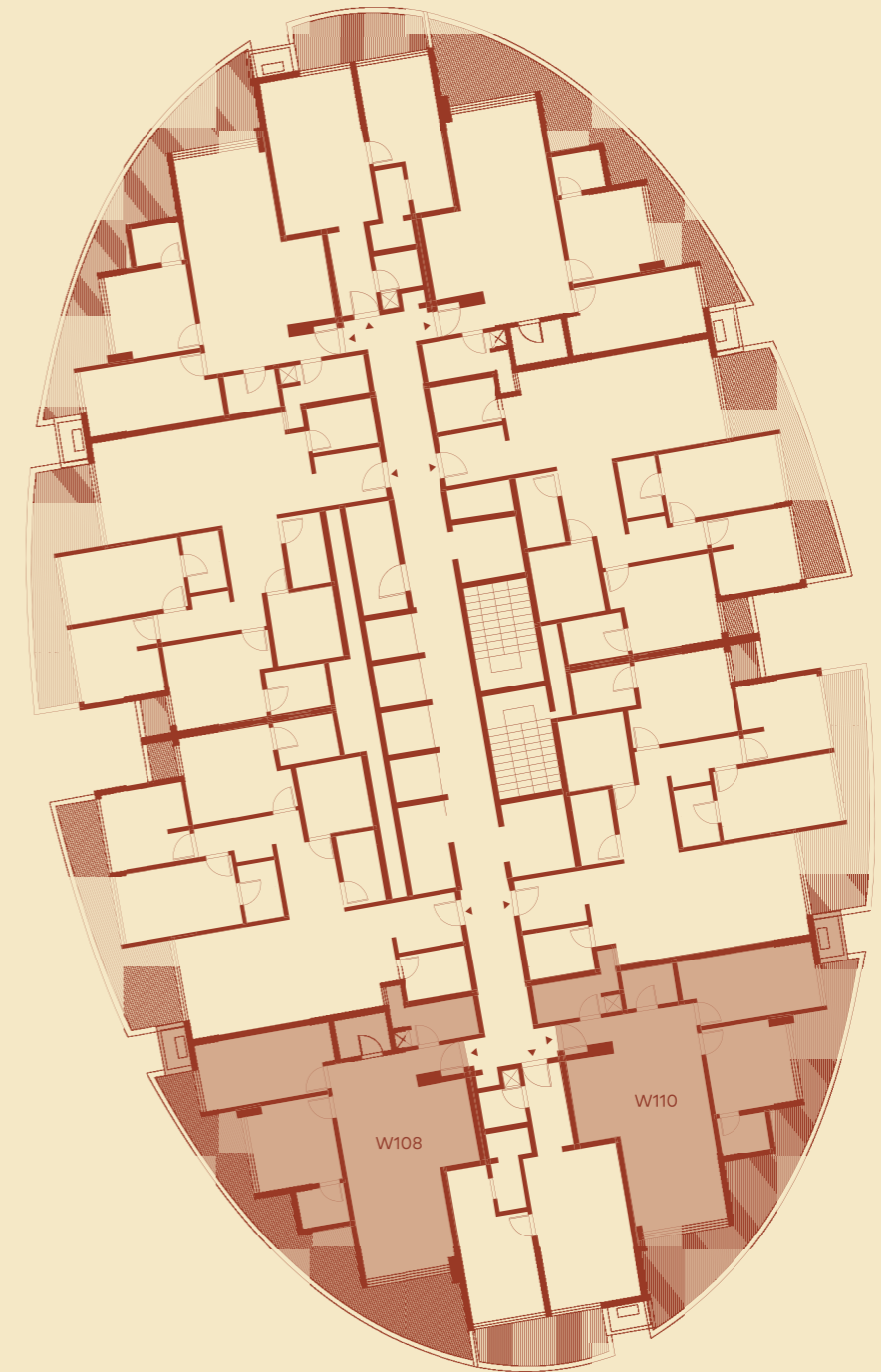


~144 sqm

Type 03
W108 - W808



Type 04
W110 - W810



The highlighted units indicate the location of these 2-Bedroom layouts on each level.

WEST BLOCK

3 BEDROOMS



Open-plan kitchen,
living, & dining area



Private Terrace for
Outdoor Living



Laundry Room



3 Bathrooms



Pantry

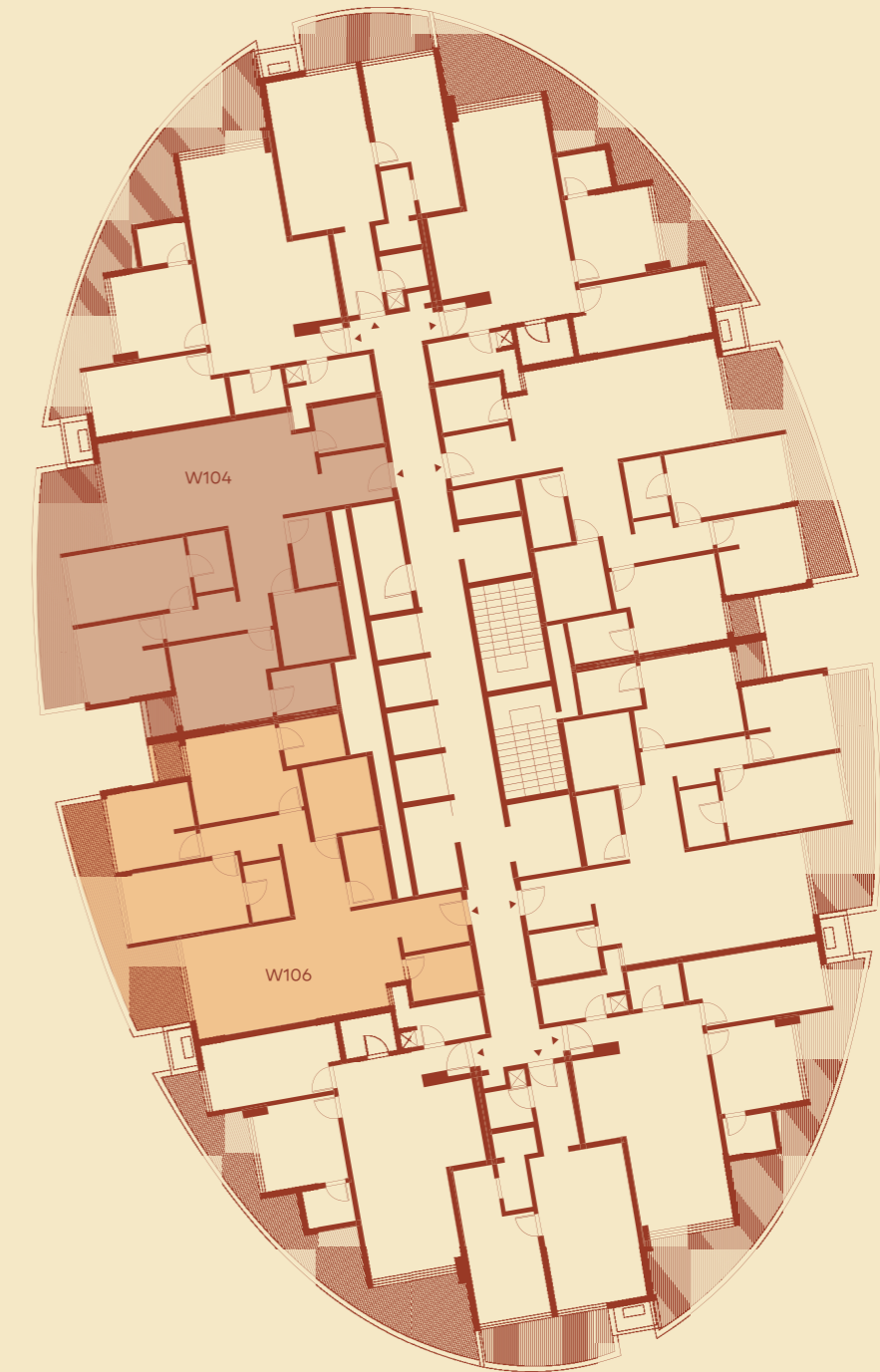


~180 sqm

Type 01
W104 - W804



Type 02
W106 - W806



The highlighted units indicate the location of these 3-Bedroom layouts on each level.

WEST BLOCK

3 BEDROOMS



Open-plan kitchen,
living, & dining area



Private Terrace for
Outdoor Living



Laundry Room



3 Bathrooms



Pantry



~180 sqm

Type 03
W105 - W805



Type 04
W107 - W807



The highlighted units indicate the location of these 3-Bedroom layouts on each level.

WEST BLOCK

PENTHOUSE



Open-plan kitchen,
living, & dining area



Private Terrace for
Outdoor Living



Laundry Room



3 Bathrooms



Pantry

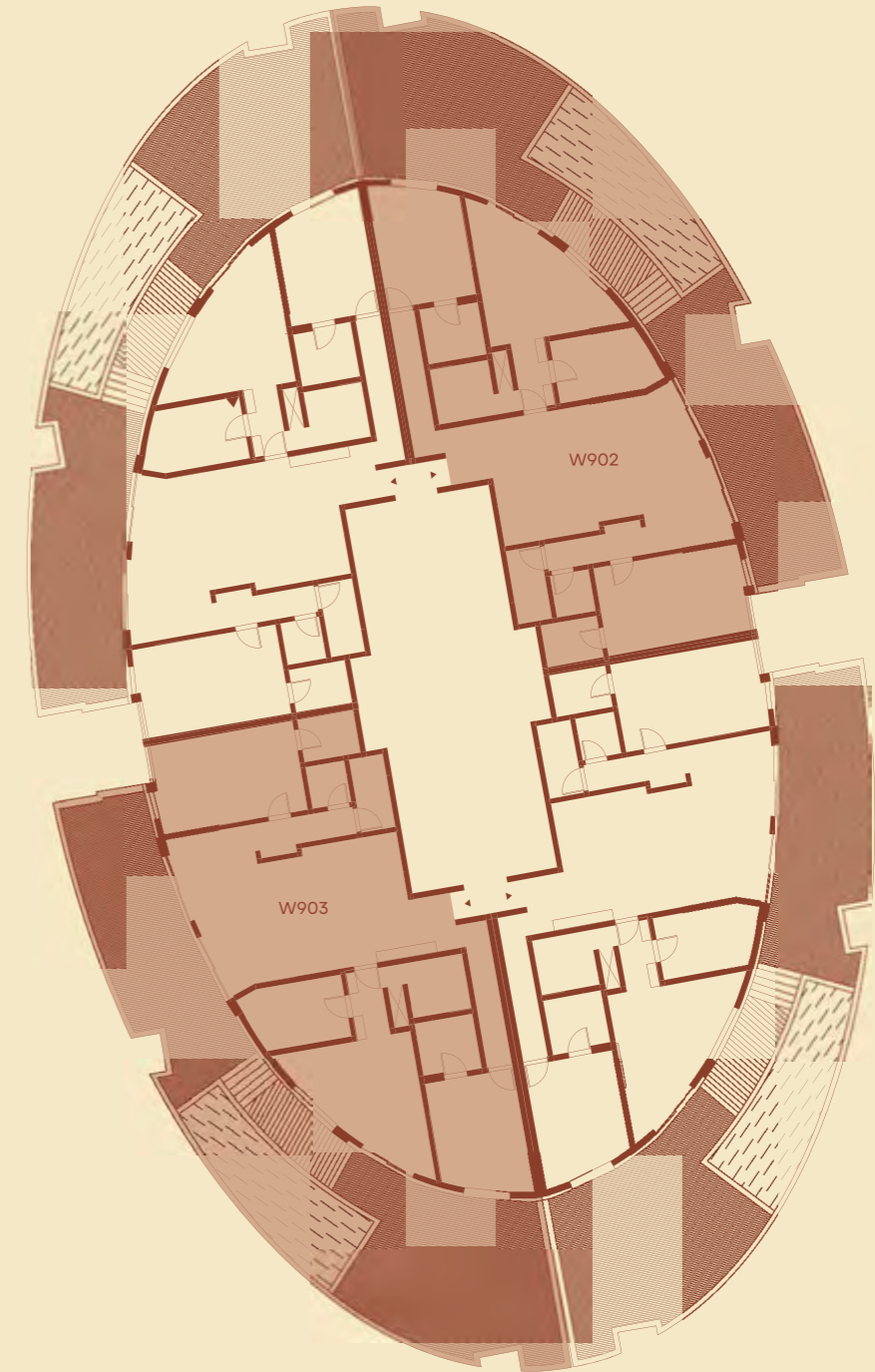


364-373 sqm

Type 01
W903



Type 02
W902



The highlighted units indicate the location of these Penthouse layouts on Level 9.

WEST BLOCK

PENTHOUSE



Open-plan kitchen,
living, & dining area



Private Terrace for
Outdoor Living



Laundry Room



3 Bathrooms



Pantry



364-373 sqm

Type 03
W901



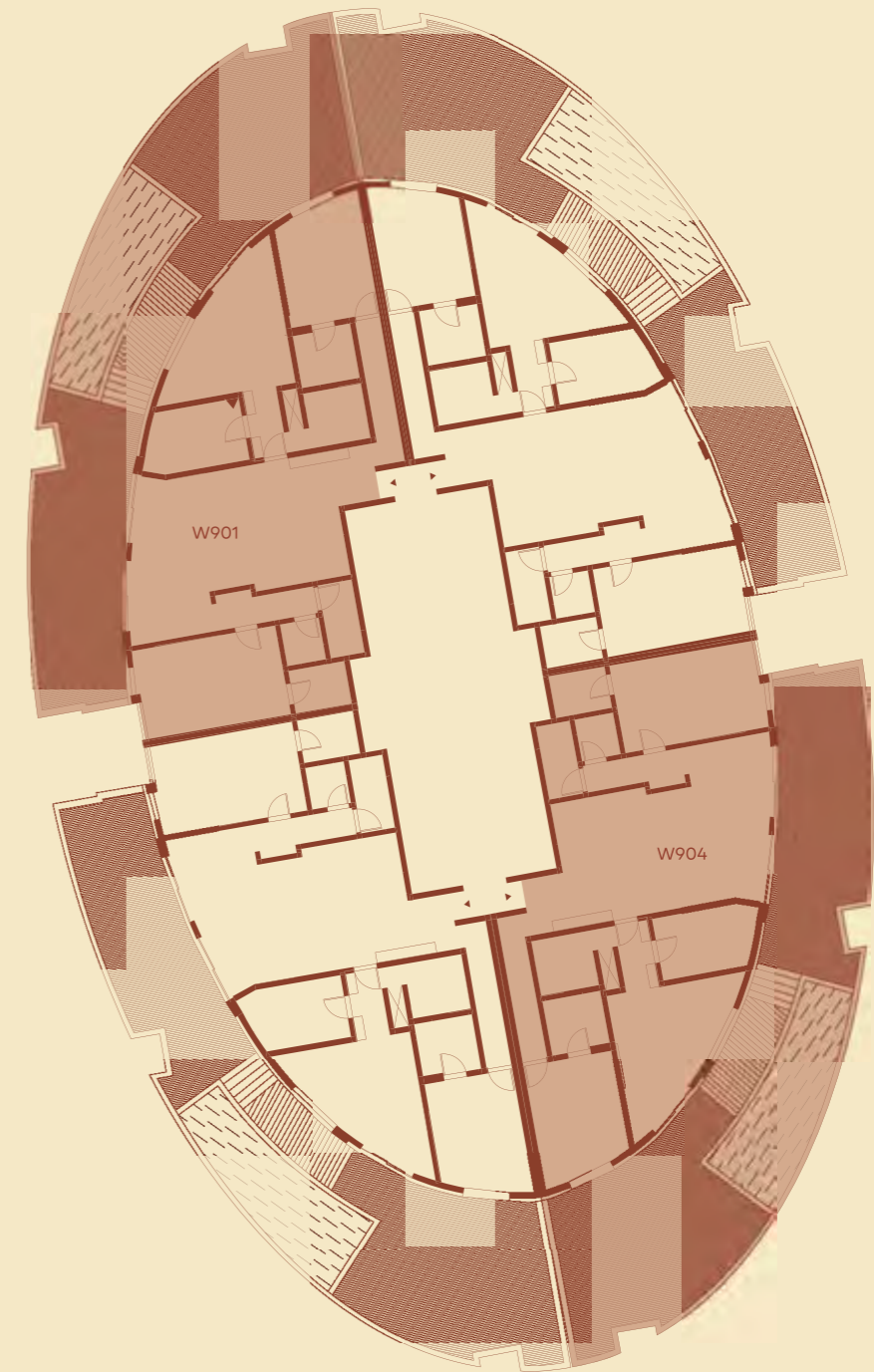
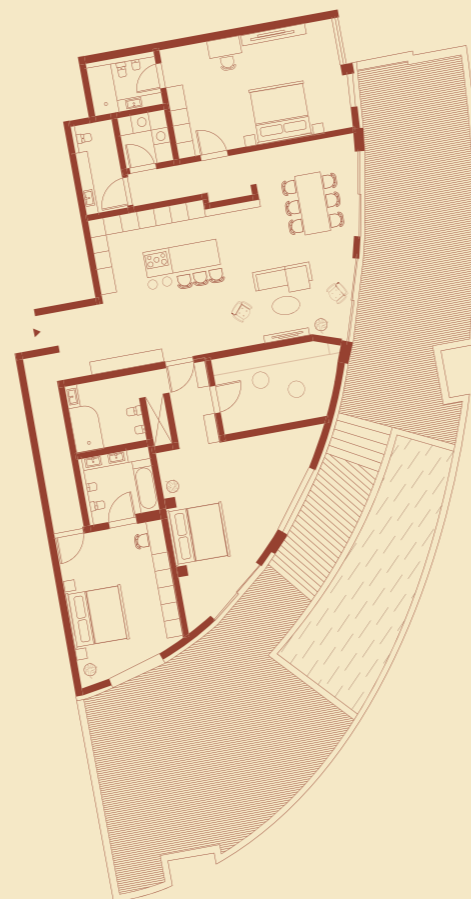
NW



Type 04
W904



SE



The highlighted units indicate the location of these Penthouse layouts on Level 9.



The real value of Targa Square lies in the lifestyle it offers. With an on-site gym, café, restaurant, clinic, childcare, bank, and nearby sports facilities, everything you need is just outside your door.

Each apartment is thoughtfully designed, well-located, and offer more than just four walls.



The architecture and natural finishes set a tone of considered design and quality, making every entrance feel like you're stepping into a five-star hotel. With concierge services, secure private access, and just 136 residences across two blocks, privacy and comfort are built into every detail.

East Block

Each apartment is designed for light, space and style, with high ceilings, distant sea views, and terraces that wrap around every room.

Q

EAST BLOCK

1 BEDROOM



Open-plan kitchen,
living, & dining area



Private Terrace for
Outdoor Living



Laundry Room



2 Bathrooms



Pantry

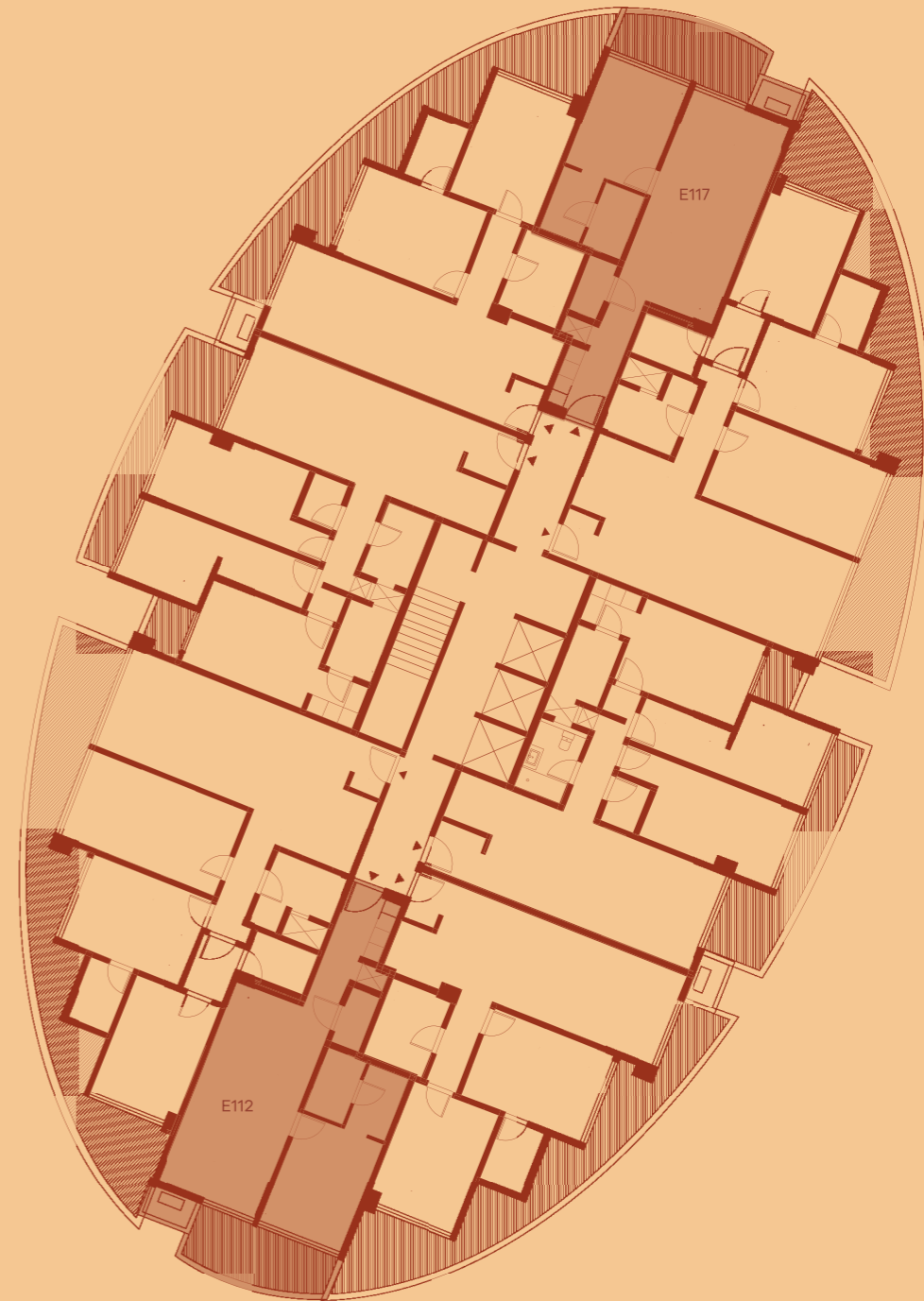


~83 sqm

Type 01
E112 - E612



Type 02
E117-E617



The highlighted units indicate the location of these 1-Bedroom layouts on each level.



Q

EAST BLOCK

2 BEDROOMS



Open-plan kitchen,
living, & dining area



Private Terrace for
Outdoor Living



Laundry Room



2 Bathrooms



Pantry

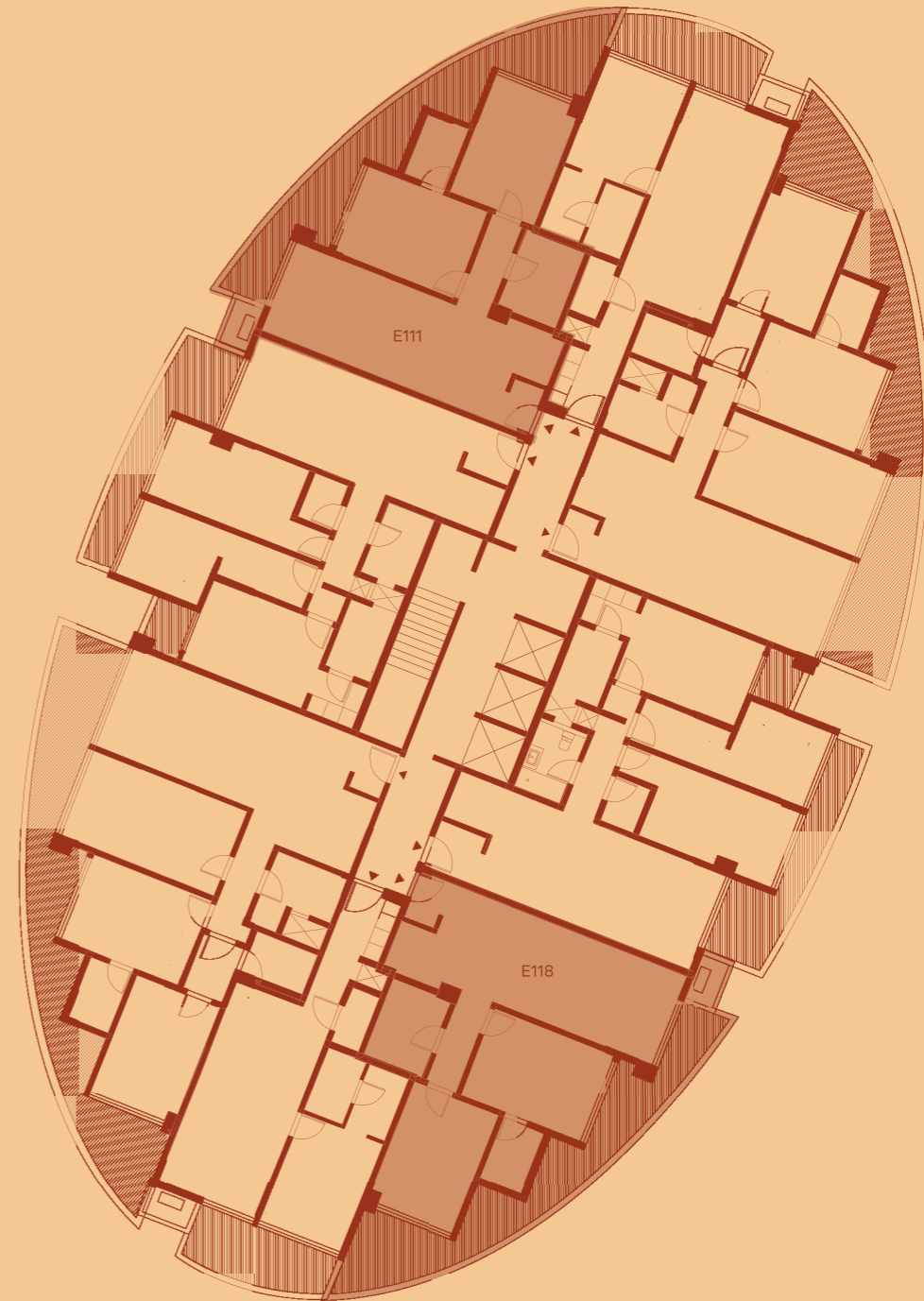


~133 sqm

Type 02
E111-E611



Type 01
E118 - E618



The highlighted units indicate the location of these 2-Bedroom layouts on each level.

EAST BLOCK

3 BEDROOMS



Open-plan kitchen,
living, & dining area



Private Terrace for
Outdoor Living



Laundry Room



3 Bathrooms



Pantry

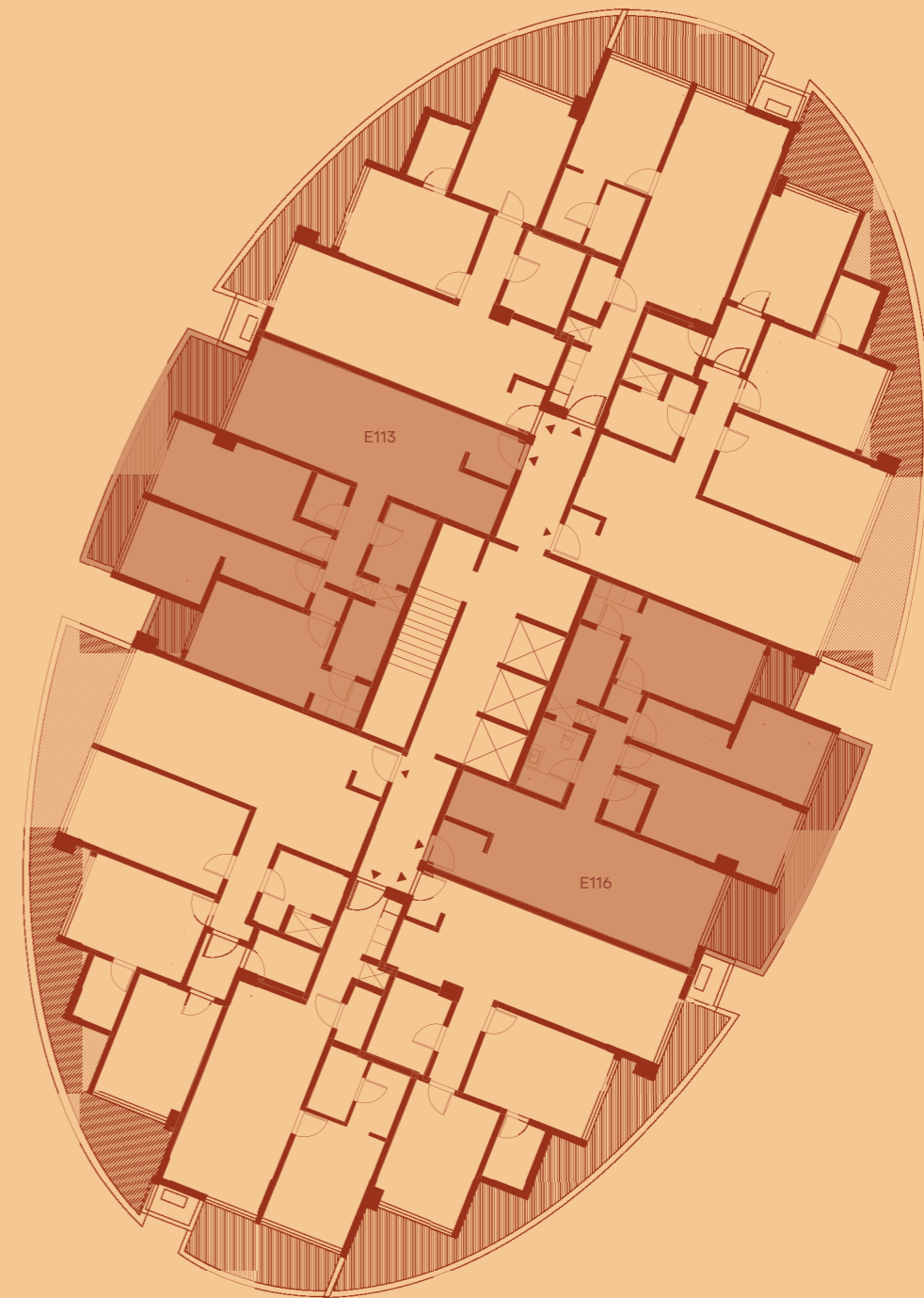


140-185 sqm

Type 01
E113 - E613



Type 02
E116 - E616



The highlighted units indicate the location of these 3-Bedroom layouts on each level.

EAST BLOCK

3 BEDROOMS



Open-plan kitchen,
living, & dining area



Private Terrace for
Outdoor Living



Laundry Room



3 Bathrooms



Pantry

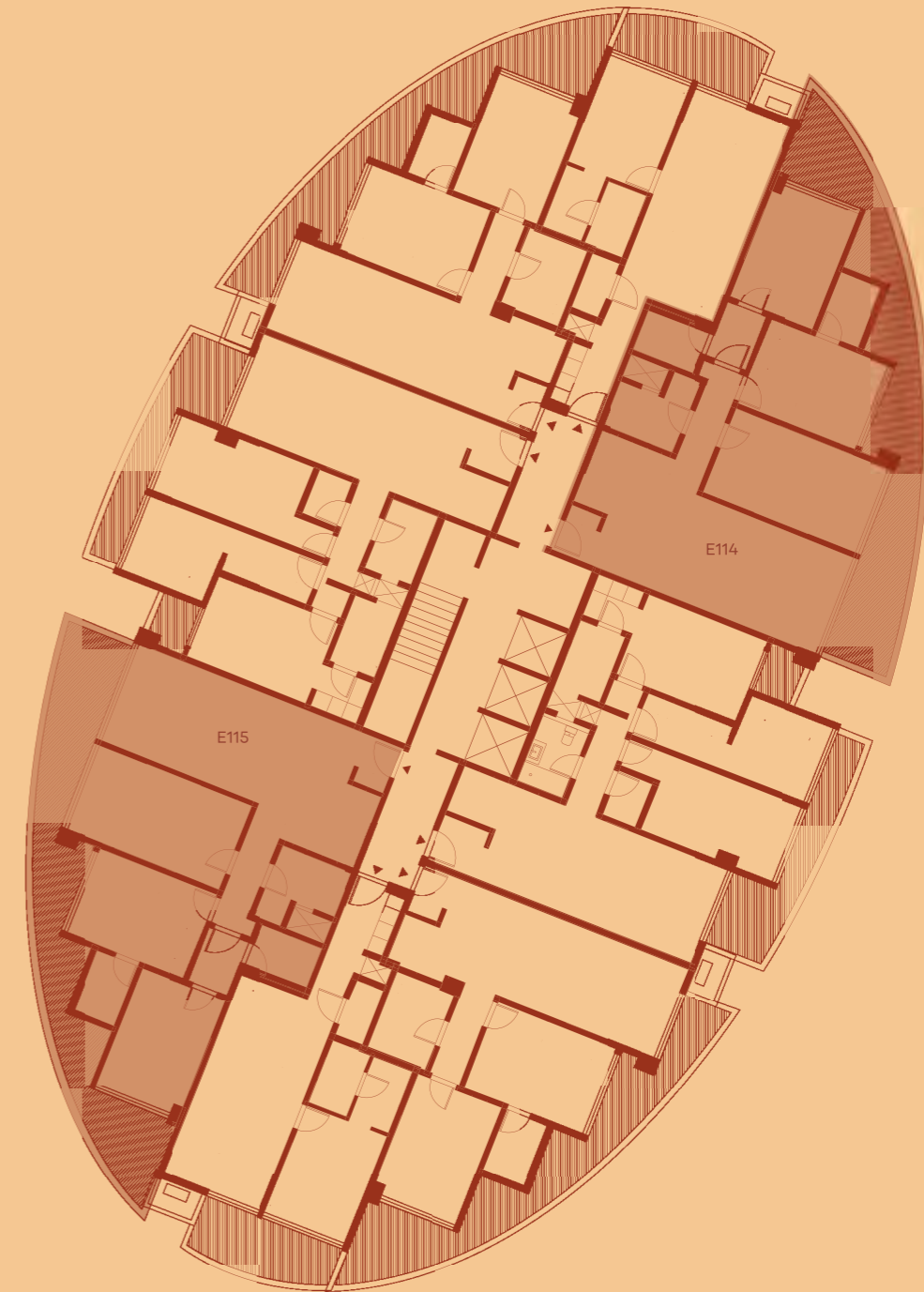
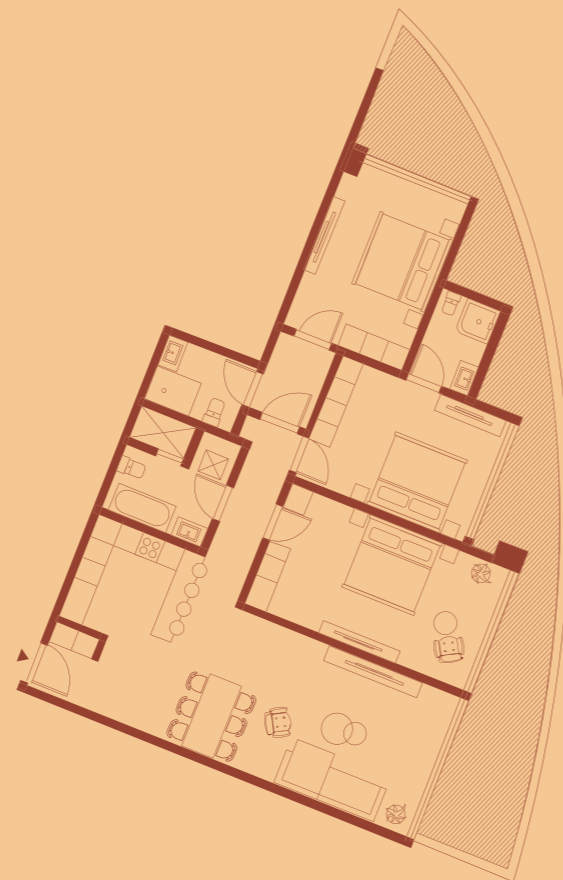


140-185 sqm

Type 01
E115 - E615



Type 02
E114-E614



The highlighted units indicate the location of these 3-Bedroom layouts on each level.

EAST BLOCK

PENTHOUSE



Open-plan kitchen,
living, & dining area



Private Terrace for
Outdoor Living



Laundry Room



3 Bathrooms



Pantry



268-288 sqm

Type 01
E713



Type 02
W712



The highlighted units indicate the location of these Penthouse layouts on Level 7.

EAST BLOCK

PENTHOUSE



Open-plan kitchen,
living, & dining area



Private Terrace for
Outdoor Living



Laundry Room



3 Bathrooms



Pantry



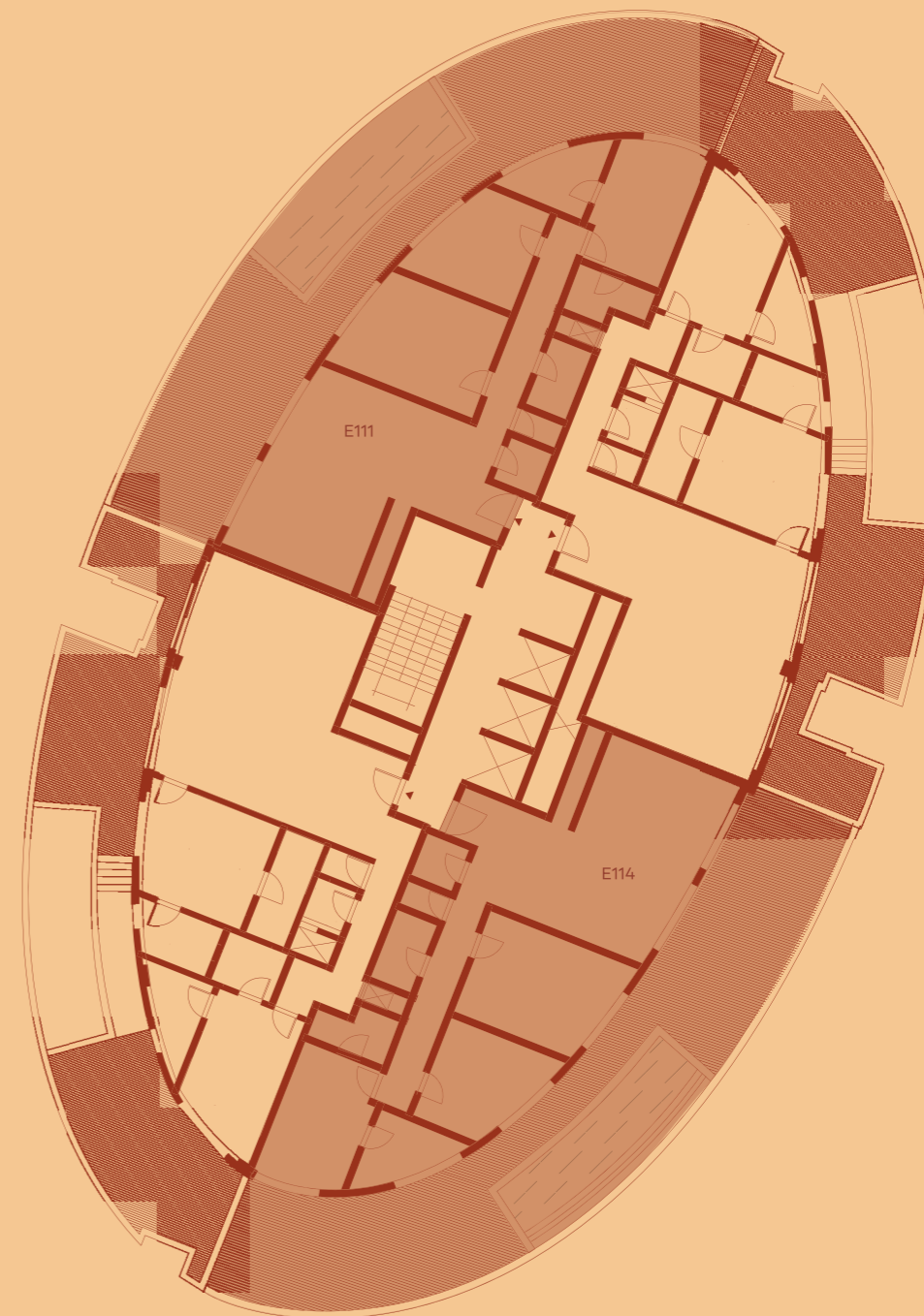
268-288 sqm

Type 03
E711

▼ NW

Type 04
W714

SE ▲



The highlighted units indicate the location of these Penthouse layouts on Level 7.



Q



Every aspect of Tarğa Square reflects a desire to deliver enduring value to residents and investors alike. Every unit and shared space is built with care to bring people together, respect the surrounding landscape, and last for years. Whatever your vision for the future may be, reimagine it at Tarğa Square.

Q

TARĠA SQUARE

RESIDENCES

ENQUIRIES

sales@targasquare.com

+356 99442148

COMPANY ADDRESS

San Pawl Tat-Targa Investments Limited
Virtu, Ta' Xbiex Terrace, Ta' Xbiex, XBX 1034, Malta.

FOR MORE INFORMATION

targasquare.com