



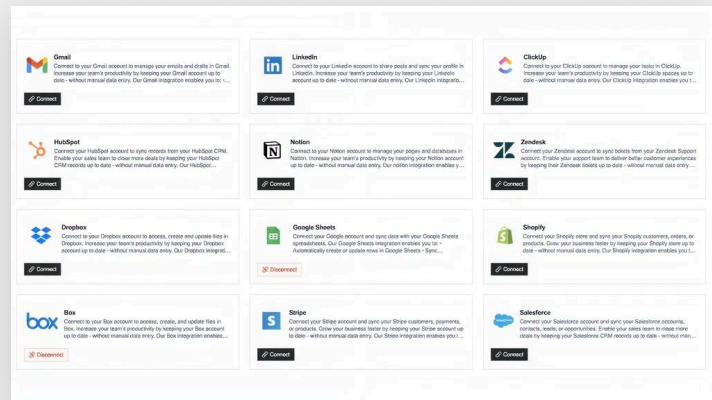
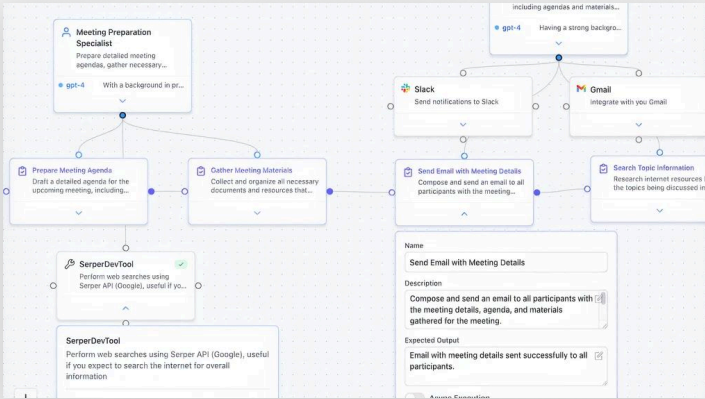
CrewAI AMP

Agent Management Platform

CrewAI AMP is a complete Agent Management Platform for building, deploying and scaling agentic workflows to automate complex tasks and business processes efficiently, securely and reliably.

Easy

CrewAI Studio is an integrated, web-based visual editor that enables anyone within an organization to build powerful multi-agent workflows via drag-and-drop configuration and a helpful AI copilot.

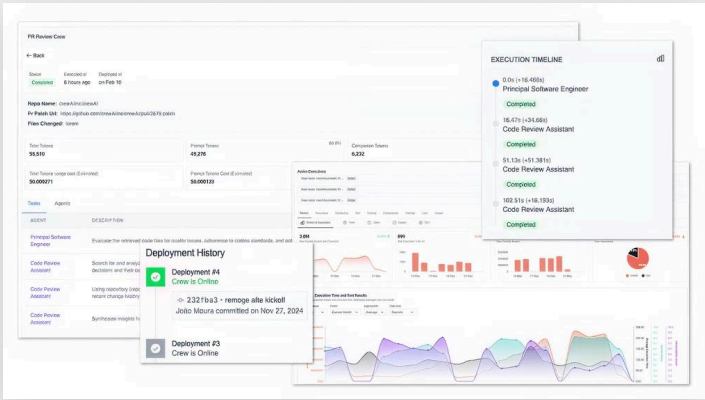


Trusted

CrewAI Enterprise includes 100s of connectors for everything from Salesforce and HubSpot to Google Workplace and Zendesk, making it easy to integrate multi-agent workflows with existing enterprise systems and services.

Scalable

CrewAI Enterprise includes comprehensive reporting and metrics for monitoring multi-agent workflows in real time, as well as detailed tracing to provide visibility into the actions taken by individual agents within a workflows -- including tool use.



Feature Comparison	CrewAI OSS	CrewAI AMP
Multi-agent orchestration and memory	✔ Yes	✔ Yes
Agent reasoning, knowledge and tool use	✔ Yes	✔ Yes
Event bus and custom event listeners	✔ Yes	✔ Yes
CrewAI Studio, AI copilot and OOTB templates	--	✔ Yes
OOTB enterprise connectors and tools	--	✔ Yes
Tracing and webhooks	--	✔ Yes
Automated agent training and workflow testing	--	✔ Yes
RBAC, encryption and rate limiting	--	✔ Yes
Real-time monitoring and usage dashboards	--	✔ Yes
Private agent and tool repositories	--	✔ Yes
Deployment history and rollback	--	✔ Yes
LLM connection management	--	✔ Yes
Environment variable management	--	✔ Yes

CrewAI Factory

Deploy CrewAI Enterprise on premises with any Kubernetes distribution, or into a virtual private cloud with Amazon Elastic Kubernetes Service or Azure Kubernete Service. In addition, CrewAI Factory supports AWS Fargate and Azure Container Apps.

Ready to automate at scale with AI agents built for the enterprise?

Try CrewAI Enterprise