



Welcome to your
employee benefits.

Polk County, Iowa
Elected Officials

Standard Insurance Company



Act Now to Help Protect What Matters Most



The life you're building for yourself and your family is precious. Every financial decision, every first step, every milestone — these are the things that matter. Think of insurance as a financial safety net that can help protect you when life doesn't go as planned. Enrolling in coverage now is a small thing you can do to help make sure you and your loved ones keep moving forward.

In this guide, you'll find details about your group insurance options from Standard Insurance Company (The Standard) and the forms you need to start the application process.



Protection for Your Loved Ones

Life insurance helps provide support and stability to your family if something were to happen to you or your spouse or children. It can help your family financially through a difficult time and provide support into the future.

Accidental Death and Dismemberment (AD&D) insurance helps protect against a sudden financial loss brought on by an accidental death. It can also help pay for the high cost of living associated with surviving an accident that results in a severe physical loss.



Protection for Your Paycheck

Your most valuable asset is your ability to earn an income. Disability insurance provides partial income replacement if you can't work because of a qualifying disability caused by an illness, injury or pregnancy. The benefit payments can help with bills that continue even when you can't work, like your mortgage or rent — expenses medical insurance won't cover.

Short Term Disability insurance pays a weekly benefit to help you keep your finances on track when you're out of work because of a disability.

Your Employer-Paid Benefits

- Basic Life and AD&D insurance

Benefits You Can Apply for Now:

- Additional Life and AD&D insurance
- Basic Dependents Life insurance
- Additional Dependents Life and AD&D insurance
- Short Term Disability insurance

Enroll Now



Enroll online at
<https://employee.polkcountyiowa.gov/>

Please contact your human resources representative or plan administrator if you need assistance with enrolling online.

When you buy insurance through work, you have access to competitive group rates and the convenience of premiums deducted right from your paycheck.

SI 16919-D-IA-174703-C1 (10/25)



Group Basic Life and Accidental Death and Dismemberment Insurance

Group Basic Life insurance from Standard Insurance Company helps provide financial protection by promising to pay a benefit in the event of an eligible member's, or his or her dependent's covered death. Basic Accidental Death and Dismemberment (AD&D) insurance may provide an additional amount in the event of a covered death or dismemberment as a result of an accident.

The cost of this insurance is paid by Polk County, Iowa, except for the cost of your dependent's insurance, which is paid by you through payroll deduction.

Eligibility

Definition of a Member	You are a member if you are a regular employee of Polk County, Iowa and actively working at least 30 hours per week. You are not a member if you are a temporary or seasonal employee, a full-time member of the armed forces, a leased employee, or an independent contractor.
Class Definition	Class 1 - Elected Officials
Eligibility Waiting Period	You are eligible on the first of the month that follows the date you become a member.

Benefits

Basic Life Coverage Amount	3 times your annual earnings to a maximum of \$250,000.
Basic AD&D Coverage Amount	For a covered accidental loss of life, your Basic AD&D coverage amount is equal to your Basic Life coverage amount. For other covered losses, a percentage of this benefit will be payable.
Basic Dependent Life Coverage Amount	The Basic Dependent Life coverage amount for your eligible spouse is \$10,000. Your spouse is the person to whom you are legally married. The Basic Dependent Life coverage amount for each of your eligible children is \$10,000. Child means your child from live birth through age 25. NOTE: The cost of your dependent's insurance is paid by you through payroll deductions.

Other Basic Life Features and Services

- Accelerated Death Benefit
- Life Services Toolkit
- Portability of Insurance
- Repatriation Benefit
- Right to Convert
- Standard Secure Access account payment option
- Travel Assistance
- Waiver of Premium

Other Basic AD&D Features

- Family Benefits Package
- Helmet Benefit
- Seat Belt and Air Bag Benefits

This information is only a brief description of the group Basic Life/AD&D and Basic Dependent Life insurance policy sponsored by Polk County, Iowa. The controlling provisions will be in the group policy issued by The Standard. The group policy contains a detailed description of the limitations, exclusions and when The Standard and Polk County, Iowa may increase the cost of coverage, amend or cancel the policy. A group certificate of insurance that describes the terms and conditions of the group policy is available for those who become insured according to its terms. For costs and more complete details of coverage, contact your human resources representative.

[SI 22165-D-IA-174703-C1 \(3/26\)](#)

8121937-1416859



Group Additional Life and AD&D Insurance

Help protect your loved ones from financial hardship.

Life insurance coverage is designed to help provide financial support and stability to your family should you pass away. Accidental Death & Dismemberment (AD&D) insurance provides an extra layer of protection if you die or become dismembered in an accident. You can also cover your eligible spouse and child(ren).



This plan offers:

- Competitive group rates
- The convenience of payroll deduction
- Benefits if you are dismembered, become terminally ill or die

🔗 About This Coverage

If you take no action you'll be covered under Basic Life insurance provided you meet the eligibility requirements. Consider whether that would be enough to help your family meet daily expenses, maintain their standard of living, pay off debt and fund your children's education. If not, you may want to apply for additional coverage now.

Life Insurance		
How Much Can I Apply For? Your combined Basic Life and Additional Life amounts cannot exceed a maximum of 8 times your annual earnings. The coverage amount for your spouse cannot exceed 100% of your combined Basic and Additional Life coverage.	For You:	\$10,000 – \$500,000 in increments of \$10,000
	For Your Spouse:	\$5,000 – \$250,000 in increments of \$5,000
	For Your Child(ren):	\$10,000
What is the Guarantee Issue Maximum? Depending on your eligibility, this is the maximum amount of coverage you may apply for during initial enrollment without answering health questions. To apply for an amount over the guarantee issue, visit https://myeoi.standard.com/174703 to complete and submit a medical history statement online.	For You:	Up to \$200,000
	For Your Spouse:	Up to \$50,000

AD&D Insurance

The benefit is paid if you or your dependents are seriously injured or pass away as a result of a covered accident.

What Does My AD&D Benefit Provide?

Note: You cannot buy more coverage for your spouse or child(ren) than you buy for yourself.

For You:

The AD&D insurance coverage amount matches what you elect for Additional Life insurance.

For Your Spouse:

The AD&D insurance coverage amount matches what you elect for Dependent Life insurance.

For Your Child(ren):

The AD&D insurance coverage amount matches what you elect for Dependent Life insurance.

Keep in mind that the amount payable for certain losses is less than 100 percent of the AD&D insurance benefit.

See the Important Details section for more information, including requirements, exclusions, limitations, age reductions and definitions.

Additional Feature

Life Insurance

Accelerated Death Benefit

If you become terminally ill, you may be eligible to receive up to 80% of your combined Basic and Additional Life benefit to a maximum of \$500,000.

How Much Life Insurance Do You Need?

After a serious accident or death in the family, there are many unexpected expenses. Your benefits could help your family pay for:

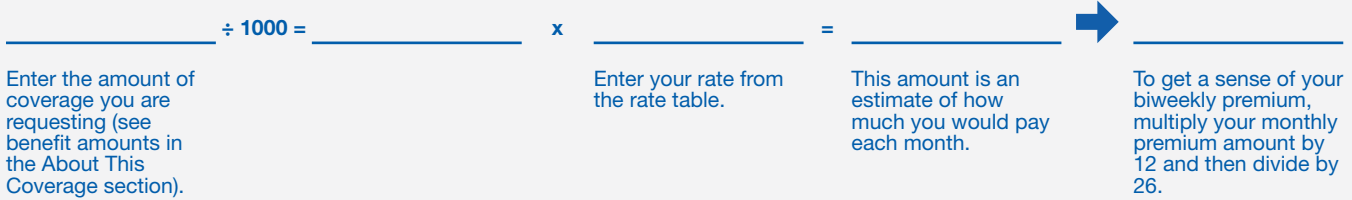
- Outstanding debt
- Burial expenses
- Medical bills
- Your children's education
- Daily expenses

To estimate your insurance needs, you'll need to consider your unique circumstances. Use our online calculator at www.standard.com/life/needs.

How Much Your Coverage Costs

Your Basic Life insurance is paid for by Polk County, Iowa. If you choose to purchase Additional Life coverage, you'll have access to competitive group rates, which may be more affordable than those available through individual insurance. You'll also have the convenience of having your premium deducted directly from your paycheck. How much your premium costs depends on a number of factors, such as your age and the benefit amount.

Use this formula to calculate your premium payment:



If you buy coverage for your spouse, your monthly rate is shown in the table below. Use the same formula to calculate the premium that you used for yourself, but use your age and your spouse's rate.

If you buy Dependent Life with AD&D coverage for your child(ren), your monthly rate is \$0.22 per \$1,000, no matter how many children you're covering. Your monthly AD&D rate of \$0.02 per \$1,000 is included.

Age (as of January 1)	Your Rate* (Per \$1,000 of Total Coverage)	Your Spouse's Rate** (Per \$1,000 of Total Coverage)
<30	\$0.08	\$0.08
30-34	\$0.10	\$0.10
35-39	\$0.11	\$0.11
40-44	\$0.13	\$0.13
45-49	\$0.18	\$0.18
50-54	\$0.30	\$0.30
55-59	\$0.48	\$0.48
60-64	\$0.72	\$0.72
65-69	\$1.37	\$1.37
70+	\$2.20	\$2.20

*Includes a monthly AD&D rate of \$0.02 per \$1,000 of AD&D benefit.

**Includes a monthly AD&D rate of \$0.02 per \$1,000 of AD&D benefit for your spouse.

Important Details

Here's where you'll find the details about the plan.

Life and AD&D Insurance Eligibility Requirements

To be eligible for coverage, you must be insured for Basic Life insurance through The Standard, a regular employee of Polk County, Iowa, and actively working at least 30 hours per week.

Temporary and seasonal employees, full-time members of the armed forces, leased employees, and independent contractors are not eligible.

If you buy Additional Life and AD&D insurance for yourself, you may also buy Life and AD&D coverage for your eligible children and/or spouse. This is called Dependent Life and AD&D insurance.

You can choose to cover your spouse, meaning a person to whom you are legally married, or your domestic partner as recognized by law.

You may also choose to cover your child. Child means your child from live birth through age 25. Please note:

- Your child cannot be insured by more than one employee.
- Your spouse and/or child(ren) must not be full-time member(s) of the armed forces.
- You cannot be insured as both an individual and a spouse.

Medical Underwriting Approval for Life Coverage

Required for:

- Coverage amounts higher than the guarantee issue maximum amount
- All late applications (applying 31 days after becoming eligible)
- Requests for coverage increases
- Reinstatements, if required
- Eligible but not insured under the prior life insurance plan

Medical Underwriting approval is not required for children.

Visit <https://myeoi.standard.com/174703> to complete and submit a medical history statement online.

Coverage Effective Date for Life Coverage

To become insured, you must:

- Meet the eligibility requirements listed in the previous sections,
- Serve an eligibility waiting period*,
- Receive medical underwriting approval (if applicable),

- Apply for coverage and agree to pay premium, and
- Be actively at work (able to perform all normal duties of your job) on the day before the insurance is scheduled to be effective.

If you are not actively at work on the day before the scheduled effective date of insurance, your insurance, including any Dependent Life insurance, will not become effective until the day after you complete one full day of active work as an eligible employee.

You may have a different effective date for Life coverage below and above the guarantee issue amount.

If your dependent is confined to a hospital or nursing home on the scheduled effective date of your dependent's insurance, your dependent's insurance will not become effective until the day the dependent is released.

Contact your human resources representative or plan administrator for further information about the applicable coverage effective date for your insurance, including any Dependent Life insurance.

*Defined as first of the month that follows the date you become a member

Life and AD&D Age Reductions

Under this plan, your coverage amount reduces to 65% at age 65, to 45% at age 70, to 30% at age 75 and to 20% at age 80. Your spouse's coverage amount reduces by your age as follows: to 65% at age 65, to 45% at age 70, to 30% at age 75 and to 20% at age 80. If you are age 65 or over, ask your Human Resources representative or plan administrator for the amount of coverage available.

Life Insurance Waiver of Premium

Your Life premiums may be waived if you:

- Become totally disabled while insured under this plan,
- Are under age 60, and
- Complete a waiting period of 180 days.

If these conditions are met, your Life insurance coverage may continue without cost until Social Security Normal Retirement Age (SSNRA), provided you give us satisfactory proof that you remain totally disabled.

Life and AD&D Insurance Portability

If your insurance ends because your employment terminates, you may be eligible to buy portable group insurance coverage from The Standard.

Life Insurance Conversion

If your insurance reduces or ends, you may be eligible to convert your existing Life insurance to an individual life insurance policy without submitting proof of good health.

Life Insurance Exclusions

Subject to state variations, you and your spouse are not covered for death resulting from suicide or other intentionally self-inflicted injury, while sane or insane. The amount payable will exclude amounts that have not been continuously in effect for at least two years on the date of death.

AD&D Benefits

The amount of the AD&D benefit is equal to the amount payable for your or your spouse's or child(ren)'s Life benefit on the date of the accident. For all other covered losses, the amount is shown as a percentage of the amount payable for the benefit on the date of the accident. No more than 100% of the AD&D benefit will be paid for all losses resulting from one accident.

Any loss must be caused solely and directly by an accident within 365 days of the accident. Satisfactory proof of loss is required for loss of life.

All other losses must be certified by a physician in the appropriate specialty determined by The Standard.

Covered loss:	Percentage of AD&D benefit payable:
----------------------	--

Life ¹	100%
One hand or one foot ²	50%
Sight in one eye, speech or hearing in both ears	50%
Two or more of the losses listed above	100%
Thumb and index finger of the same hand ³	25%
Quadriplegia	100%
Triplegia	75%
Paraplegia	75%
Hemiplegia	50%
Uniplegia	25%

¹ Includes loss of life caused by accidental exposure to adverse weather conditions or disappearance if disappearance is caused by an accident that reasonably could have resulted in your death.

² Even if the severed part is surgically re-attached. If you lose a hand or foot and an AD&D benefit is payable for quadriplegia, triplegia, paraplegia, hemiplegia, or uniplegia, involving that same hand or foot, the benefit will be the higher of the AD&D benefit for that loss.

³ This benefit is not payable if an AD&D benefit is payable for the loss of the entire hand.

AD&D Insurance Exclusions

You are not covered for death or dismemberment caused or contributed to by any of the following:

- Committing or attempting to commit an assault or felony, or actively participating in a violent disorder or riot
- Suicide or other intentionally self-inflicted injury, while sane or insane
- War or any act of war (declared or undeclared), and any substantial armed conflict between organized forces of a military nature
- Voluntary consumption of any poison, fumes or drug, unless used or consumed according to the directions of a physician
- Alcohol – if your blood alcohol content is in excess of the legal limit for operating a motor vehicle as defined by the jurisdiction where the accident or loss occurred
- Sickness, pregnancy, heart attack or stroke existing at the time of the accident
- Medical or surgical treatment for any of the above

When Your Insurance Ends

Your insurance ends automatically when any of the following occur:

- The date the last period ends for which a premium was paid
- The date your employment terminates
- The date you cease to meet the eligibility requirements (insurance may continue for limited periods under certain circumstances)
- The date the group policy, or your employer's coverage under the group policy, terminates
- For each elective insurance coverage, the date that coverage terminates under the group policy
- The date your Life coverage ends, your AD&D coverage will end as well

In addition to the above requirements, your Dependent Life and AD&D coverage ends automatically on the date your dependent ceases to meet the eligibility requirements for a dependent.

For more details on when your insurance ends, contact your human resources representative or plan administrator.

Group Insurance Certificate

If coverage becomes effective and you become insured, you may receive a group insurance certificate containing a detailed description of the insurance coverage, including the definitions, exclusions, limitations, reductions and terminating events. The controlling provisions will be in the group policy. The information present in this summary does not modify the group policy, certificate or the insurance coverage in any way.

GP1219-LIFE, GP1219-LIFE-ASSOC, GP1219-LIFE-TRUST

[SI 22167-D-ALAA-IA-174703 \(3/26\)](#)

8121937-1416863

Online Will Preparation

A simplified way to take care of important life matters



If creating a will has been on your radar, Online Will Preparation can help you get it done. Use this easy tool to help make important decisions for you and your family. Online Will Preparation is included in the Life Services Toolkit, an additional service with your Group Life Insurance from Standard Insurance Company (The Standard).



Why Create a Will?

A will is a legal document that describes how you want to divide up your assets after your death. If you don't have a will, state law will determine how your assets will be divided. A will can also be used to designate a guardian for minor children. Moreover, a will helps your family and friends understand your wishes.



How It Works

Online Will Preparation is an easy-to-follow process. Just answer a series of questions — on your own time — and watch as the document is created. You can save and close the document at any time, then work on it later. After you've created the will, follow instructions to complete the process.

Start Creating Your Will



Go to standard.com/mytoolkit.



In the username field, enter "assurance."



Locate the step-by-step instructions for creating a will on the home page.



Click on the instructions and follow the steps to create a will.

Standard Insurance Company | 1100 SW Sixth Avenue, Portland OR 97204 | standard.com

Life Services Toolkit is provided through an arrangement with Health AdvocateSM and is not affiliated with The Standard. Health Advocate is solely responsible for providing and administering the included service. Life Services Toolkit is not available to Life insurance beneficiaries who are minors or to non-individual entities such as trusts, estates or charities.

The Standard is a marketing name for StanCorp Financial Group, Inc. and subsidiaries. Insurance products are offered by Standard Insurance Company of Portland, Oregon, in all states except New York.

The Life Services Toolkit

Resources and Tools to Support You and Your Beneficiary



Group Life insurance through your employer gives you assurance that your family will receive some financial assistance in the event of a death. But coverage under a group Life policy from Standard Insurance Company (The Standard) does more than help protect your family from financial hardship after a loss. We have partnered with Health AdvocateSM to offer a lineup of additional services that can make a difference now and in the future.

Online tools and services can help you create a will, make advance funeral plans and put your finances in order. After a loss, your beneficiary can consult experts by phone or in person, and obtain other helpful information online.

The Life Services Toolkit is automatically available to those insured under a group Life insurance policy from The Standard.

Services to Help You Now

Visit the Life Services Toolkit website at standard.com/mytoolkit and enter user name “assurance” for information and tools to help you make important life decisions.

- **Estate Planning Assistance:** Online tools walk you through the steps to prepare a will and create other documents, such as living wills, powers of attorney and advance directives.
- **Financial Planning:** Consult online services to help you manage debt, calculate mortgage and loan payments, and take care of other financial matters with confidence.
- **Health and Wellness:** Timely articles about nutrition, stress management and wellness help employees and their families lead healthy lives.
- **Identity Theft Prevention:** Check the website for ways to thwart identity thieves and resolve issues if identity theft occurs.
- **Funeral Arrangements:** Use the website for guidance on how to begin, to educate yourself on funeral costs, find funeral-related services and make decisions about funeral arrangements in advance.

If you are a recipient of an Accelerated Death Benefit,¹ you may access the services for beneficiaries outlined on the next page.



Life Services Toolkit is provided through an arrangement with Health AdvocateSM and is not affiliated with Standard Insurance Company. Health Advocate is solely responsible for providing and administering the included service. This service is only available while insured under Standard Insurance Company's life insurance policy. Standard Insurance Company may change providers or terminate service at any time.

¹ An Accelerated Death Benefit or Accelerated Benefit allows a covered individual who becomes terminally ill to receive a portion of the Life insurance proceeds while living, if all other eligibility requirements are met.

Standard Insurance Company | 1100 SW Sixth Avenue, Portland, OR 97204 | standard.com

The Standard is a marketing name for StanCorp Financial Group, Inc. and subsidiaries. Insurance products are offered by Standard Insurance Company of 1100 SW Sixth Avenue, Portland, Oregon in all states except New York. Product features and availability vary by state and are solely the responsibility of Standard Insurance Company.

Services for Your Beneficiary

Life insurance beneficiaries² can access services for 12 months after the beneficiary receives the Life claim letter from The Standard. Recipients of an Accelerated Death Benefit can access services for 12 months after the date of payment.

These supportive services can help your beneficiary cope after a loss:

- **Grief Support:** Care Managers with advanced training are on call to provide confidential grief sessions virtually or in person. Your beneficiaries are eligible for up to three face-to-face sessions.

Our Care Managers may offer your beneficiaries additional grief support through support kits sent to their home, based on each individual's needs. As part of this program, age-appropriate books can be sent for children and teens.

- **Legal Services:** In addition to online estate planning tools, your beneficiaries can obtain legal assistance from experienced attorneys. They can schedule an initial office visit or a telephone consultation for up to 30 minutes with a network attorney. Beneficiaries who wish to retain a participating attorney after the initial consultation receive a 25% rate reduction from the attorney's normal hourly or fixed-fee rates.
- **Financial Assistance:** Your beneficiaries can schedule up to 30-minute telephone sessions with financial counselors who can help with issues such as budgeting strategies, and credit and debt management.
- **Support Services:** During an emotional time, your beneficiaries can receive help planning a funeral or memorial service. WorkLife advisors can guide them to resources to help manage household repairs and chores, find child care and elder care providers or organize a move or relocation.
- **Online Resources:** Your beneficiaries can easily access additional services and features on the Life Services Toolkit website for beneficiaries, including online resources about funeral costs, find funeral-related services and make decisions about funeral arrangements.



Beneficiaries can participate in phone consultations or in-person meetings with trained grief counselors.

For beneficiary services, visit standard.com/mytoolkit (user name: support) or call the assistance line at 800.378.5742

² The Life Services Toolkit is not available to Life insurance beneficiaries who are minors or to non-individual entities such as trusts, estates, charities.

Things can happen on the road. Passports get stolen or lost. Unforeseen events or circumstances derail travel plans. Medical problems surface at the most inconvenient times. Travel Assistance can help you navigate these issues and more at any time of the day or night.¹

You and your spouse are covered with Travel Assistance — and so are kids through age 25 — with your group insurance from Standard Insurance Company (The Standard).²

Security That Travels with You

Travel Assistance is available when you travel more than 100 miles from home or internationally for up to 180 days for business or pleasure. It offers aid before and during your trip, including:



Visa, weather and currency exchange information, health inoculation recommendations, country-specific details and security and travel advisories



Credit card and passport replacement and missing baggage and emergency cash coordination



Help replacing prescription medication or lost corrective lenses and advancing funds for hospital admission



Emergency evacuation to the nearest adequate medical facility and medically necessary repatriation to the employee's home, including repatriation of remains³



Connection to medical care providers, interpreter services, local attorneys and assistance in coordinating a bail bond



Return travel companion if travel is disrupted due to emergency transportation services or care of minor children if left unattended due to prolonged hospitalization



Assistance with the return of your personal vehicle if your emergency transportation services leave it stranded



Evacuation arrangements in the event of a natural disaster, political unrest and social instability

Contact Travel Assistance

800.872.1414

United States, Canada, Puerto Rico, U.S. Virgin Islands and Bermuda

Everywhere else
+1.609.986.1234

Text:
+1.609.334.0807

Email:
medservices@assistamerica.com

Get the App

Get the most out of Travel Assistance with the Assist America Mobile App.

Click one of the links below or scan the QR code to download the app. Enter your reference number and name to set up your account. From there, you can use valuable travel resources including:

- One-touch access to Assist America's Emergency Operations Center
- Worldwide travel alerts
- Mobile ID card
- Embassy locator



Reference Number:
01-AA-STD-5201



Standard Insurance Company | 1100 SW Sixth Avenue, Portland, OR 97204 | standard.com

1 Travel Assistance is provided through an arrangement with Assist America, Inc. and is not affiliated with The Standard. Travel Assistance is subject to the terms and conditions, including exclusions and limitations of the Travel Assistance Program Description. Assist America, Inc. is solely responsible for providing and administering the included service. Travel Assistance is not an insurance product. This service is only available while insured under The Standard's group policy.

2 Spouses and children traveling on business for their employers are not eligible to access these services during those trips.

3 Participants are responsible for arranging transportation from the point of injury or illness to the initial point of medical care or assessment and the cost related to this transportation. Any emergency evacuation services provided by Assist America, Inc. must be arranged by Assist America, Inc.

The Standard is a marketing name for StanCorp Financial Group, Inc. and subsidiaries. Insurance products are offered by Standard Insurance Company of Portland, Oregon in all states except New York. Product features and availability vary by state and are solely the responsibility of Standard Insurance Company.



Group Short Term Disability Insurance

Protect your income and those who depend on it.

This coverage replaces a portion of your income when you can't work because of a qualifying disability. Even if you're healthy now, it's important to protect yourself and the people who count on your income. This insurance can help you pay the bills when you're unable to work.



This plan offers:

- Competitive group rates
- The convenience of payroll deduction
- Benefits for a qualifying disability that is not work-related

🔗 About This Coverage

See the Important Details section for more information, including requirements, exclusions and definitions.

What Your Benefit Provides

This is the benefit you'd receive if you were to suffer a qualifying disability. Eligible earnings are your weekly insured predisability earnings, as defined by the group policy. Your benefit amount will be reduced by deductible income; see the Important Details section for a list of deductible income sources.

60% of your eligible earnings, up to a maximum benefit of \$1,000 per week. Plan minimum \$15 per week.

Benefit Waiting Period

If you suffer a qualifying disability, your benefit waiting period is the length of time you must be continuously disabled before you can begin receiving your weekly benefit.

0 days for accidental injury
7 days for physical disease, pregnancy or mental disorder

Extended Benefit Waiting Period

This applies if you do not apply for this coverage within 31 days of becoming eligible, were eligible for coverage under a prior plan for more than 31 days but were not insured, or if your insurance ends because you failed to pay your premium and is later reinstated.

60 days for any qualifying disability caused by physical disease, pregnancy or mental disorder occurring during the first 12 months of coverage.

How Long Your Benefits Last

This is the maximum length of time you could be eligible to receive a weekly disability benefit.

90 days

☰ Additional Features

Your coverage comes with some added features:

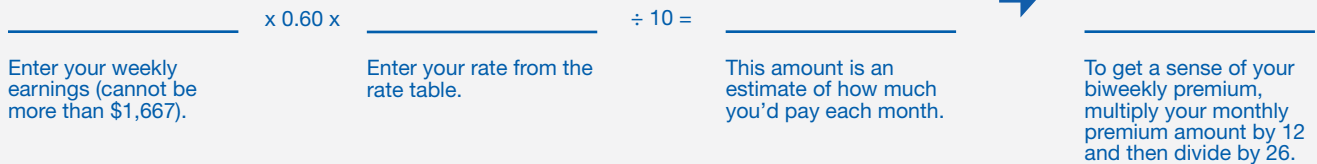
Return to Work Incentive	Your disability benefit will not be reduced by any work earnings you receive until the combined amount of the benefit and your work earnings exceeds 100% of your predisability earnings.
Help with Returning to Work	If a worksite modification would enable you to return to work, we can help your employer make approved modifications by covering some or all of the cost.
Health Advocacy Select	While you're out on short term disability claim, you can connect with a Personal Health Advocate who'll help you navigate the complexities of the healthcare system. From start to finish, you'll work with one person sparing you the headache of explaining your concerns to someone who might be unfamiliar with your situation. NOTE: Health Advocacy services are provided through an arrangement with a service provider, which is not affiliated with The Standard or any insurance or third-party. Health Advocate does not replace health insurance coverage, provide medical care or recommend treatment.
Health Advocacy Select	While you're out on short term disability claim, you can connect with a Personal Health Advocate who'll help you navigate the complexities of the healthcare system. From start to finish, you'll work with one person sparing you the headache of explaining your concerns to someone who might be unfamiliar with your situation.

These services are provided through an arrangement with a service provider, which is not affiliated with The Standard or any insurance or third-party. Health Advocate does not replace health insurance coverage, provide medical care or recommend treatment.

How Much Your Coverage Costs

Because this insurance is offered through Polk County, Iowa, you'll have access to competitive group rates that may be more affordable than those available through individual insurance. You'll also have the convenience of having your premium deducted directly from your paycheck. How much your premium costs depends on a number of factors, such as your age and benefit amount.

Use this formula to calculate your premium payment:



Your Age (as of January 1)	Rate per \$10 of weekly benefit
<25	\$0.58
25–34	\$0.63
35–44	\$0.54
45–49	\$0.61
50–54	\$0.73
55–59	\$0.94
60–64	\$1.13
65–69	\$1.30
70+	\$1.40

Not being able to work also means not being able to earn a paycheck.

As you consider Short Term Disability insurance, think about the expenses you would need to cover if you were to become disabled:

- Mortgage or rent
- Utilities
- Groceries
- Medical bills
- Car insurance
- Childcare costs

To estimate your insurance needs, you'll need to consider your unique circumstances.

Use our online calculator at www.standard.com/disability/needs.

Important Details

Here's where you'll find the details about the plan.

Eligibility Requirements

To be eligible for coverage, you must be a regular employee of Polk County, Iowa, actively working at least 30 hours per week, and a citizen or resident of the United States or Canada.

Temporary and seasonal employees, full-time members of the armed forces, leased employees, and independent contractors are not eligible.

Employee Coverage Effective Date

To become insured, you must:

- Meet the eligibility requirements listed above
- Serve an eligibility waiting period*
- Apply for coverage and agree to pay premiums
- Be actively at work (able to perform all normal duties of your job) on the day before the scheduled effective date of insurance

If you are not actively at work on the day before the scheduled effective date of insurance, your insurance will not become effective until the day after you complete one full day of active work as an eligible employee.

Please contact your human resources representative or plan administrator for more information regarding the requirements that must be satisfied for your insurance to become effective.

*Defined as first of the month that follows 30 consecutive days as a member

Definition of Disability

You will be considered disabled if, as a result of physical disease, injury, pregnancy or mental disorder:

- You are unable to perform with reasonable continuity the material duties of your own occupation, and
- You suffer a loss of at least 20% in your predisability earnings when working in your own occupation.

You are not considered disabled merely because your right to perform your own occupation is restricted, including a restriction or loss of license.

Exclusions

Subject to state variations, you are not covered for a disability caused or contributed to by any of the following:

- Your committing or attempting to commit an assault or felony, or your active participation in a violent disorder or riot
- An intentionally self-inflicted injury, while sane or insane

- War or any act of war (declared or undeclared, and any substantial armed conflict between organized forces of a military nature)
- The loss of your professional or occupational license or certification
- An activity arising out of or in the course of any employment for wage or profit

Limitations

Short Term Disability benefits are not payable for any period when you are:

- Not under the ongoing care of a physician in the appropriate specialty, as determined by The Standard
- Not participating in good faith in a plan, program or course of medical treatment or vocational training or education approved by The Standard, unless your disability prevents you from participating
- Confined for any reason in a penal or correctional institution
- Able to work and earn at least 20% of your predisability earnings in your own occupation but you elect not to
- Eligible to receive benefits for your disability under a workers' compensation law or similar law

When Your Benefits End

Your Short Term Disability benefits end automatically on the date any of the following occur:

- You are no longer disabled
- Your maximum benefit period ends
- Long term disability benefits become payable to you under a Long Term Disability plan
- Benefits become payable under any other disability insurance plan under which you become insured through employment during a period of temporary recovery
- You fail to provide proof of continued disability and entitlement to benefits
- You pass away

Deductible Income

Your benefits will be reduced if you have deductible income, which is income you receive or are eligible to receive while receiving Short Term Disability benefits. Deductible income includes:

- Amounts under unemployment compensation law

Group Short Term Disability Insurance

- Amounts because of your disability from any other group insurance
- Any disability or retirement benefits received or you are eligible to receive from your employer's retirement plan
- Amounts under any state disability income benefit law or similar law
- Earnings from work activity while you are disabled, plus the earnings you could receive if you work as much as your disability allows
- Earnings or compensation included in your predisability earnings which you receive or are eligible to receive while Short Term Disability benefits are payable
- Amounts due from or on behalf of a third party because of your disability, whether by judgment, settlement or other method
- Any amount you receive by compromise, settlement or other method as a result of a claim for any of the above

When Your Insurance Ends

Your insurance ends automatically when any of the following occur:

- The date the last period ends for which a premium was paid
- The date your employment terminates
- The date the group policy (or your employer's coverage under the group policy) terminates
- The date you cease to meet the eligibility requirements (insurance may continue for limited periods under certain circumstances)
- The date Polk County, Iowa ends participation in the group policy

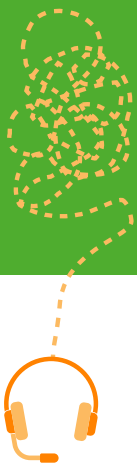
Group Insurance Certificate

If coverage becomes effective and you become insured, you may receive a group insurance certificate containing a detailed description of the insurance coverage, including the definitions, exclusions, limitations, reductions and terminating events. The controlling provisions will be in the group policy. The information present in this summary does not modify the group policy, certificate or the insurance coverage in any way.

GP399-STD, GP899-STD, GP309-STD, GP209-STD,
GP399/ASSOC, GP399-STD/TRUST

[SI 12503-D-IA-174703 \(3/26\)](#)

8121937-1416871



When you're sick or injured, your main focus should be on your health – not untangling medical bills, scheduling appointments and coordinating your care with specialists and other providers.

Help is Only a Phone Call Away

Fortunately, you don't have to take on the healthcare system by yourself. While you're out on a short term disability claim, you can connect with a Personal Health Advocate who'll help you navigate the complexities of the healthcare system. Simply take advantage of Health Advocacy Select, a service that's included with your group Short Term Disability insurance coverage through Standard Insurance Company (The Standard).

An Expert by Your Side

At no additional cost, you can contact Health AdvocateSM¹ and be assigned a Personal Health Advocate, typically a registered nurse, who will remain on your case until it's fully resolved. From start to finish, you'll work with one person sparing you the headache of explaining your concerns to someone who might be unfamiliar with your situation.

Your Personal Health Advocate can assist you in quickly and efficiently working through healthcare management issues.

Some ways they can help you are:

- **Understand** and take maximum advantage of your medical benefits.
- **Make sense** of your diagnosis and research treatment options.
- **Find and schedule appointments** with the right doctors and specialists, particularly for complex medical conditions where a second opinion is appropriate.
- **Locate specialists** for high-risk pregnancies and find pediatricians.
- **Manage your out-of-pocket expenses** by finding alternative services and cost information.
- **Locate** necessary post pregnancy support in the event of a difficult delivery or when complications arise.
- **Resolve** medical claims and billing issues.
- **Find resources** for services that may not be covered through your employer's health benefits program.

All cases are managed in compliance with state and federal privacy laws. Your personal medical information is kept strictly confidential.



Personal Health
Advocates available
Monday – Friday,
8 a.m. – 10 p.m.,
Eastern at:

844.450.5543

Standard Insurance Company
1100 SW Sixth Avenue
Portland, OR 97204

standard.com

¹ Health Advocacy services are provided through an arrangement with Health AdvocateSM, a leading health advocacy and assistance company. Health Advocate is not affiliated with The Standard or any insurance or third-party provider, and does not replace health insurance coverage, provide medical care or recommend treatment.

The Standard is a marketing name for StanCorp Financial Group, Inc. and subsidiaries. Insurance products are offered by Standard Insurance Company of Portland, Oregon in all states except New York. Product features and availability vary by state and are solely the responsibility of Standard Insurance Company.



About Standard Insurance Company

For more than 100 years, we have been dedicated to our core purpose: to help people achieve financial well-being and peace of mind. Headquartered in Portland, Oregon, The Standard is a nationally recognized provider of group employee benefits. To learn more about products from The Standard, visit us at **www.standard.com**.

The Standard is a marketing name for StanCorp Financial Group, Inc. and subsidiaries. Insurance products are offered by Standard Insurance Company of Portland, Oregon, in all states except New York. Product features and availability vary by state and are solely the responsibility of Standard Insurance Company.

Standard Insurance Company
1100 SW Sixth Avenue
Portland OR 97204
www.standard.com

Enrollment Booklet
SI 19455-D-IA-174703-C1 (3/26)
8121937-1416838