

MARBELLA - PUERTO BANUS, MARBELLA



bedrooms **4** bathrooms **4** built _{m2} **238** terrace _{m2} **40**

BRIGHT AND SPACIOUS FULLY RENOVATED FRONTLINE DUPLEX PENTHOUSE WITH PANORAMIC VIEWS OVER THE MARINA

A bright and spacious duplex penthouse on the front line in Puerto Banús designed and decorated by one of Marbella's leading architects. The property consists of large and bright living room with cream marble floors and feature lighting, a very spacious master en-suite bedroom with walk-in wardrobe and stunning sea views. There are two further en-suite double bedrooms, plus a further guest bedroom with separate bathroom; a fully fitted kitchen with high quality appliances and plenty of cupboards and storage space. The property also features an amazing terrace with stunning views over the boats and sea. The property is fully furnished. It has just been fully renovated and redesigned to top quality specifications.

community --
month

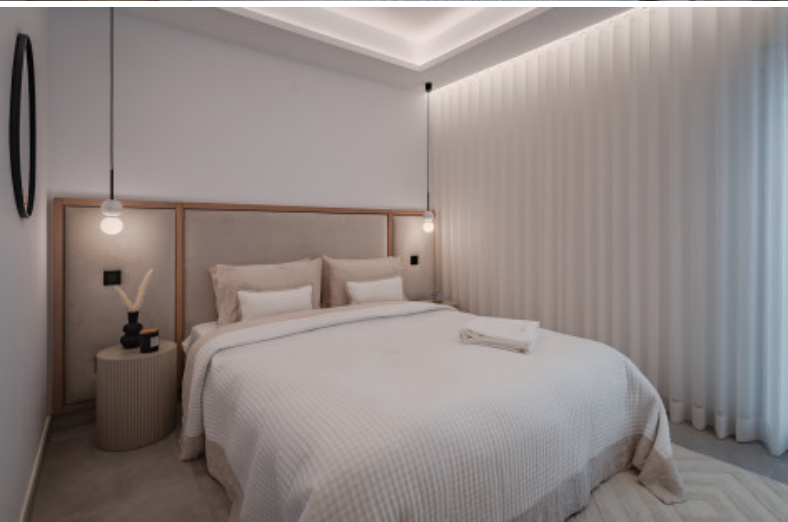
garbage 185 €
year

ibi 1.572 €
year

for sale **3.750.000 €**









Marbella - Puerto Banus, Marbella

Bright and spacious fully renovated frontline duplex penthouse with panoramic views over the marina

A bright and spacious duplex penthouse on the front line in Puerto Banús designed and decorated by one of Marbella's leading architects. The property consists of large and bright living room with cream marble floors and feature lighting, a very spacious master en-suite bedroom with walk-in wardrobe and stunning sea views. There are two further en-suite double bedrooms, plus a further guest bedroom with separate bathroom; a fully fitted kitchen with high quality appliances and plenty of cupboards and storage space. The property also features an amazing terrace with stunning views over the boats and sea. The property is fully furnished. It has just been fully renovated and redesigned to top quality specifications.

Reference	332558	Beds	4	Built m²	238
Type	Duplex Penthouse	Baths	4	Interior m²	198
Location	Marbella - Puerto Banus, Marbella	En-suite Baths	3	Terrace m²	40
		Guest Toilets	---	Plot m²	---
		Pax	---		
Pool	No	Community	---	Levels	2
Garden	No	Garbage	185 € / year	Floor	3
Garage	No	IBI	1.572 € / year	Orientation	South
Parking slots	---	Construct Year	1972	EPC	In Progress

For sale

3.750.000 €

Sale price does not include costs or taxes. Additional costs for the buyer: inscription and notary fees, ITP 7% or, alternatively 10% VAT and AJD (1.2% on the purchase price) on new properties and subject to some requisites to be met. This info is subject to errors, omissions, modifications, prior sale or withdrawal from the market. Information sheet available, Decree 218/2005 Oct. 11th.