

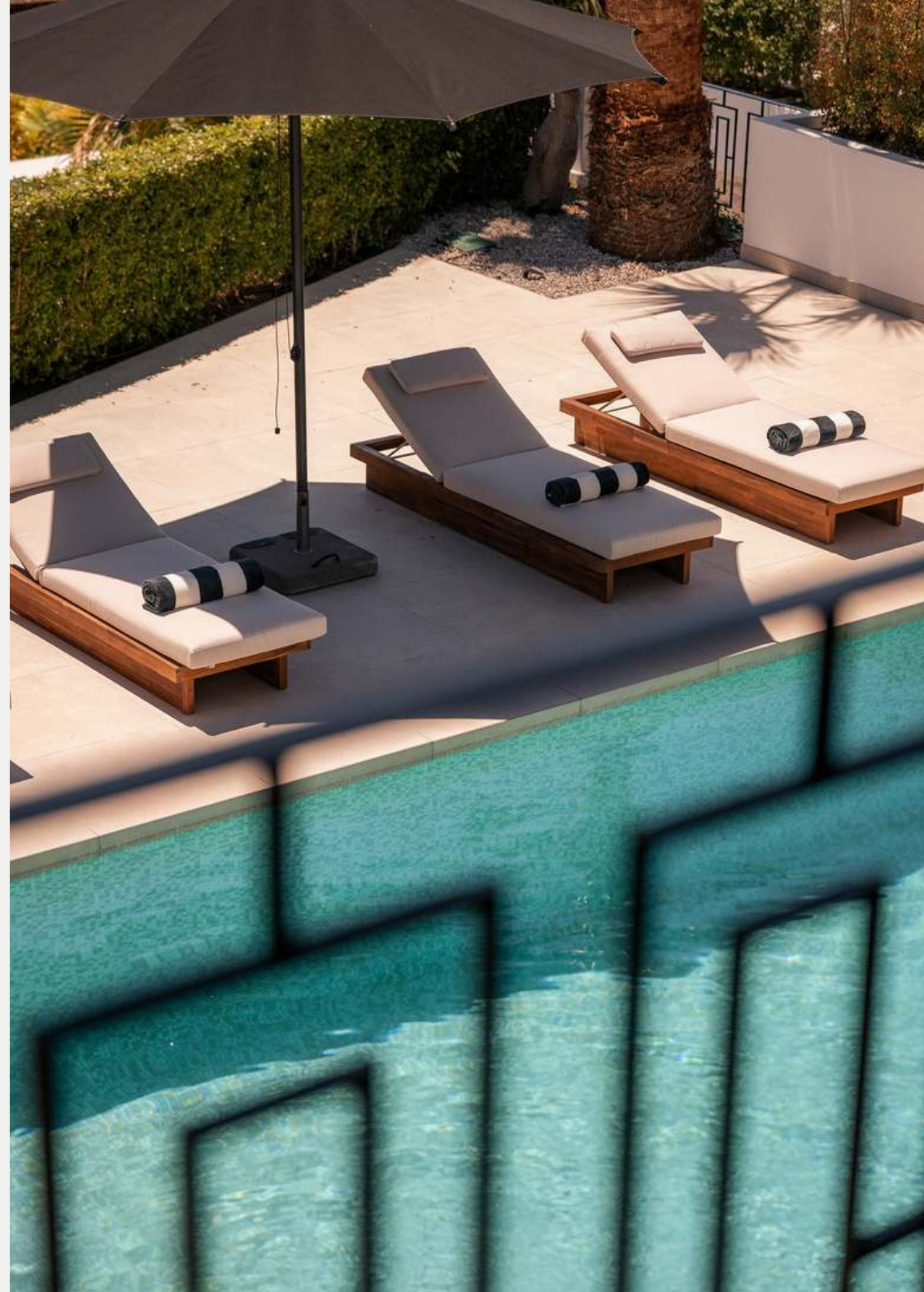
Villa Florence



VILLA FLORENCE

Close to Los Naranjos Golf Club in Nueva Andalucía, with southwest orientation, Villa Florence enjoys sunlight throughout the day and panoramic views to the sea and the course. A green perimeter ensures privacy.

Distributed across three levels, the main floor features an open-plan kitchen with island and Siemens appliances, a dining area, and a living room in L-shape with built-in shelves and TV. Two en-suite bedrooms and a guest toilet complete the layout. Black-framed windows open wide to connect indoors and out. White-painted wooden ceilings add warmth. Iron balustrades define the lines. The living room opens onto a covered terrace and pool. Further into the garden, a shaded outdoor kitchen and dining area.



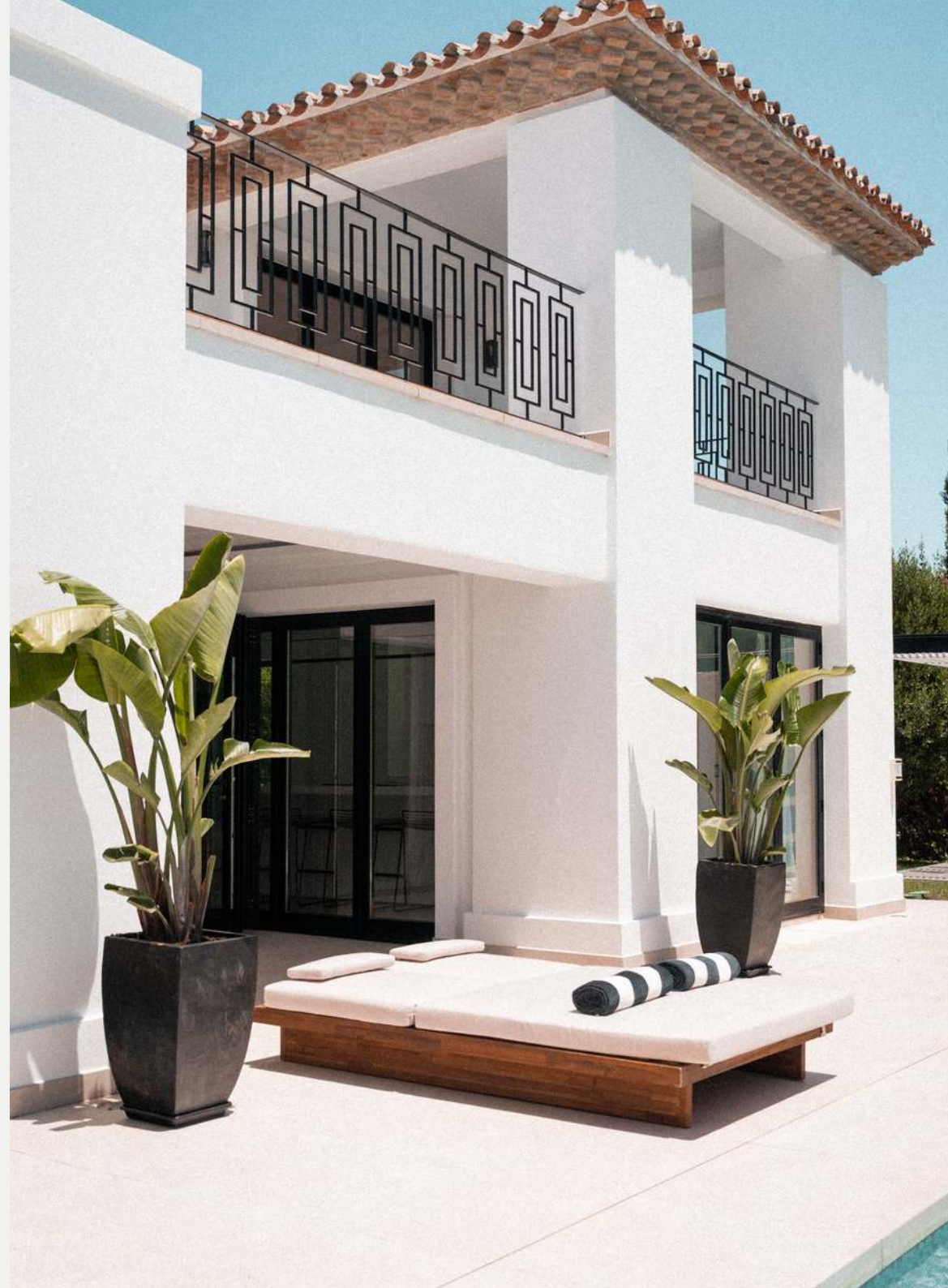


An elegant staircase leads to the first floor, entirely dedicated to the master suite. Walk-in wardrobe, bathroom with double sinks, freestanding bathtub and shower. Access to a private terrace, partially shaded, with views over the garden. In the lower level, a games area with pool table, wine cellar, bar, cinema room and gym. Two en-suite bedrooms, guest toilet, laundry, storage room and a 69 m² covered garage. A paved courtyard provides additional on-site parking.

VILLA FLORENCE

4.950.000 €

BEDS	5
BATHS	5 + 2
BUILT	514 m ²
PLOT	1084 m ²
IBI	2.339 € / Year
GARBAGE TAX	556 € / Year





FEATURES

SEA VIEWS

CLOSE TO GOLF

DOMOTIC SYSTEM

UNDERFLOOR HEATING

PRIVATE POOL

CINEMA

OUTDOOR KITHCEN

INDOOR GYM

WINE CELLAR

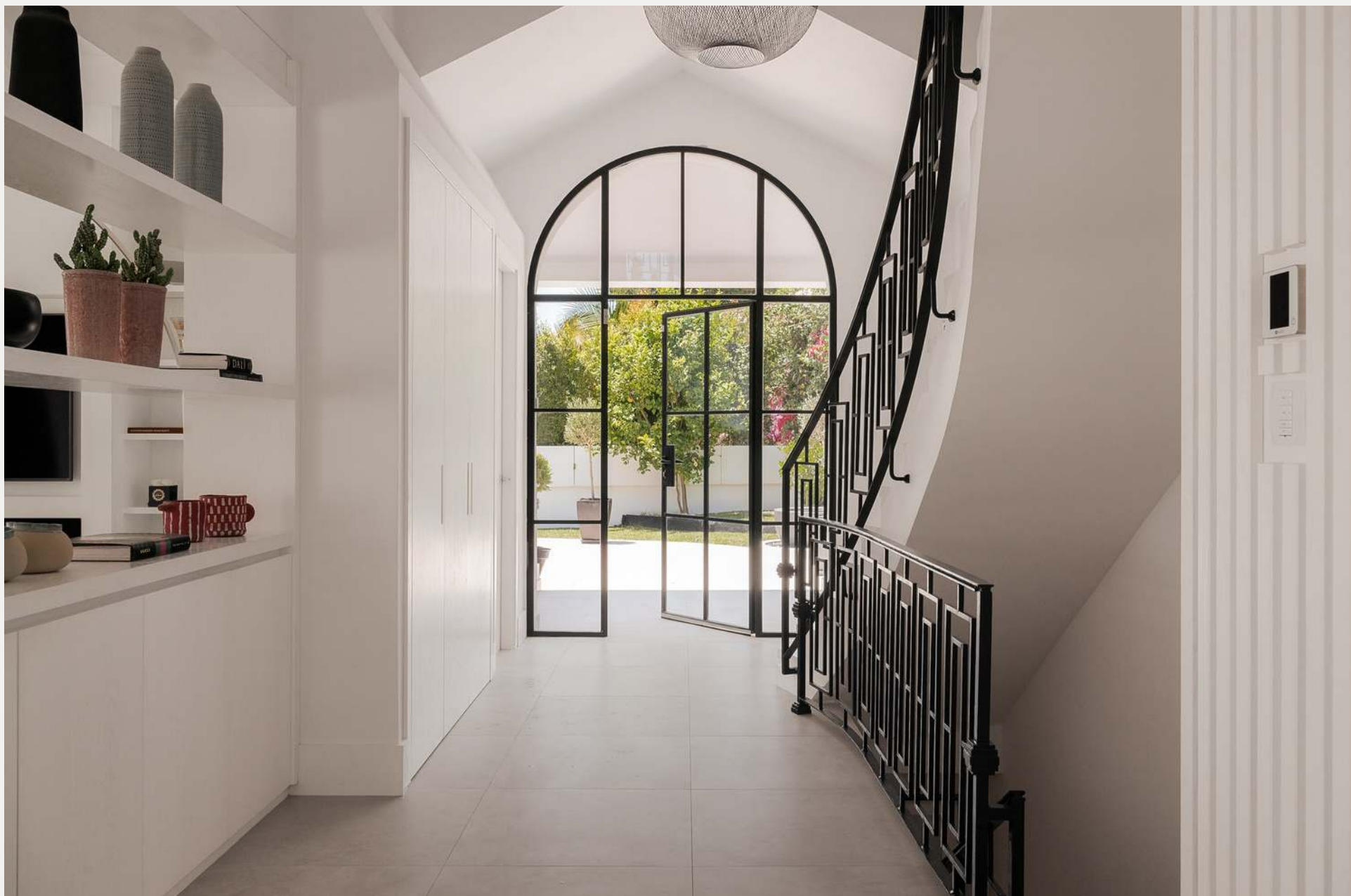
FIREPLACE

AMENITIES NEAR















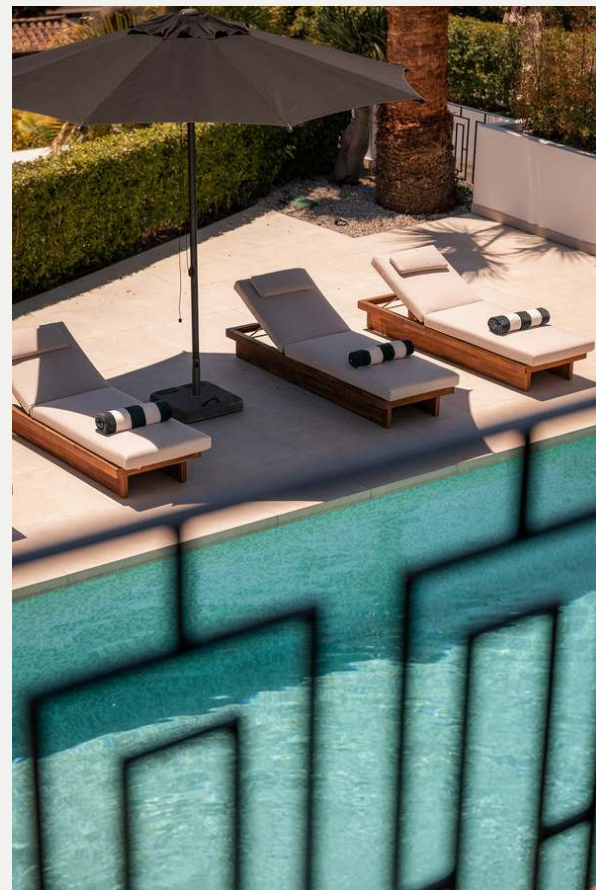
















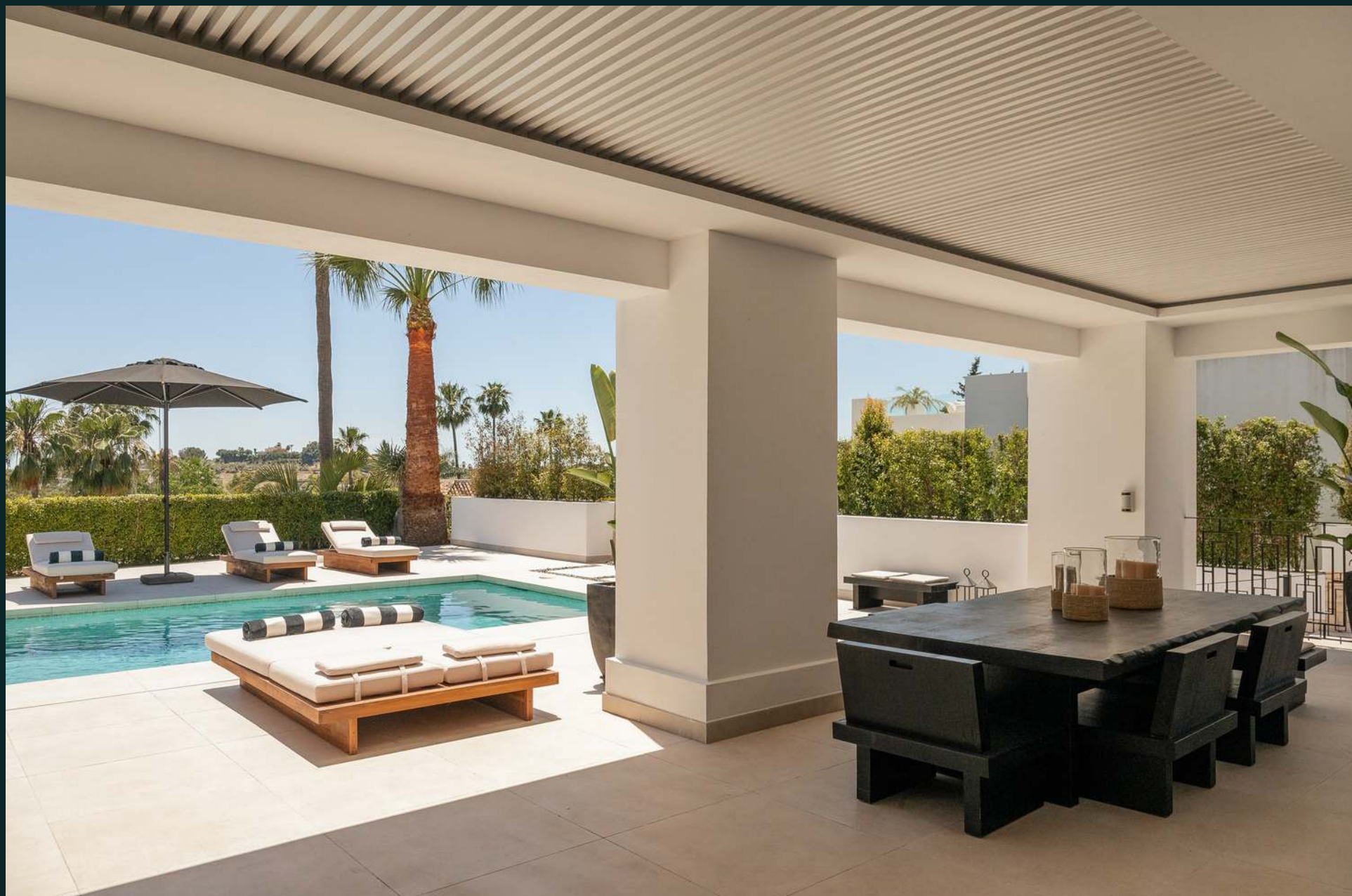


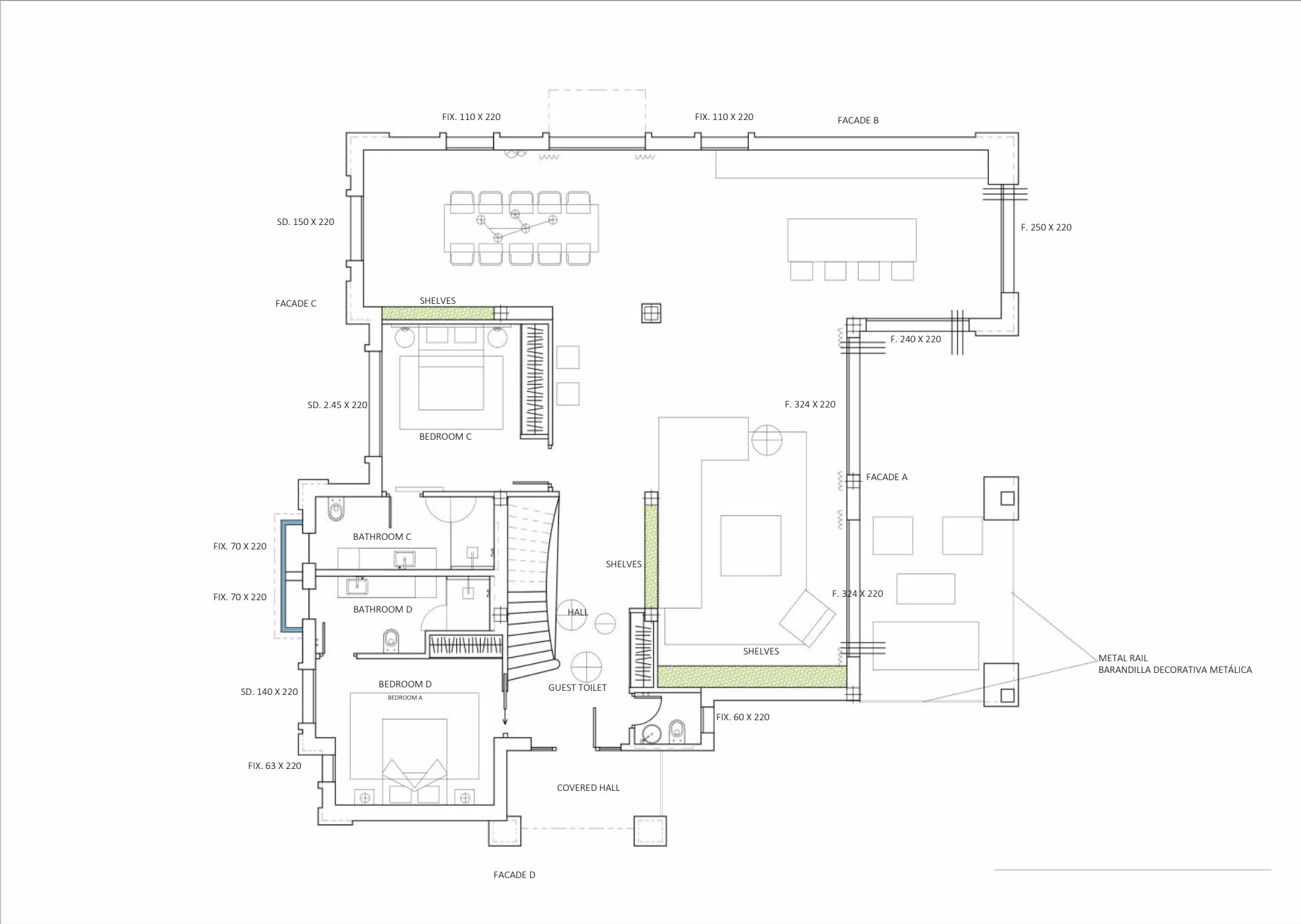


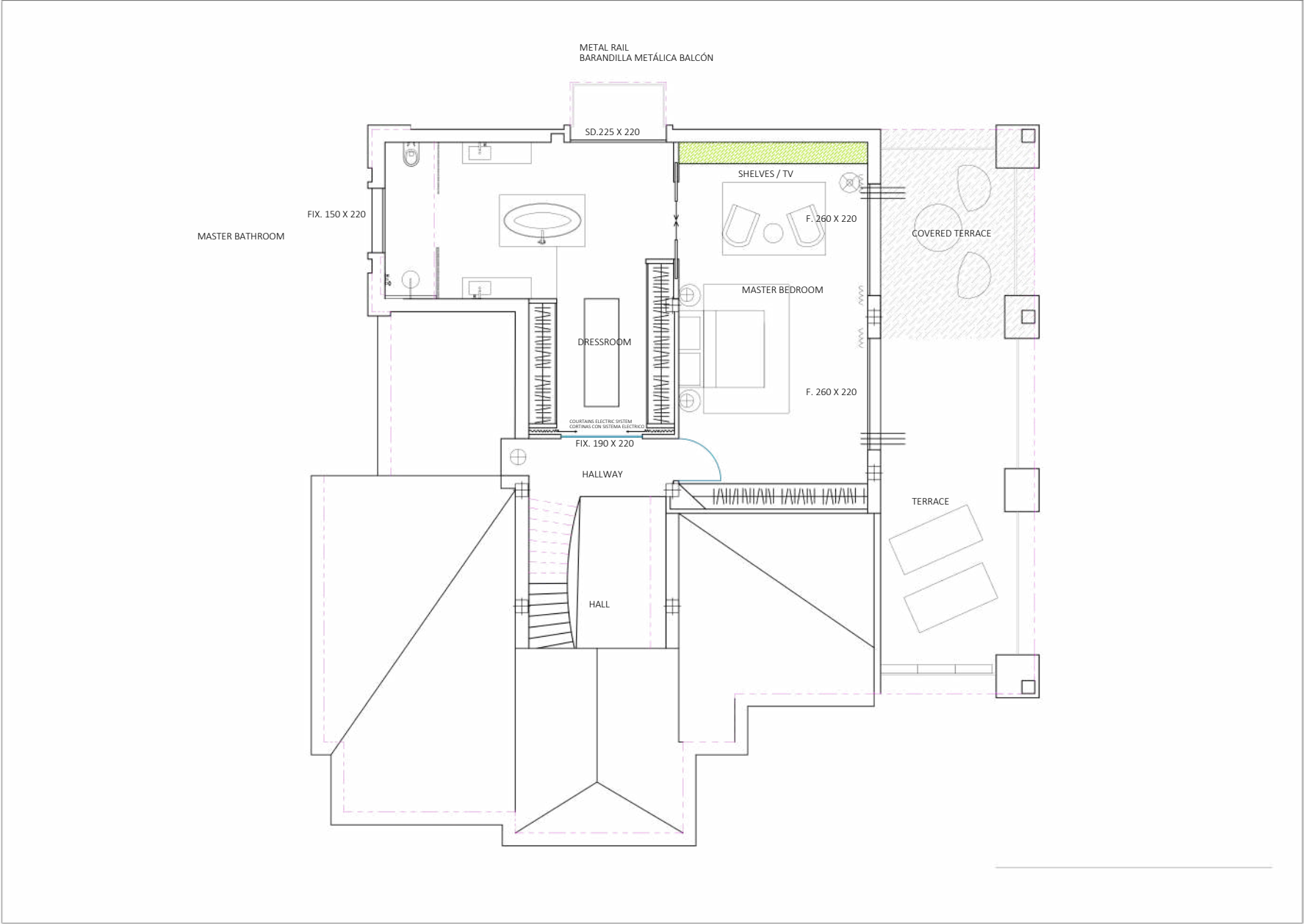


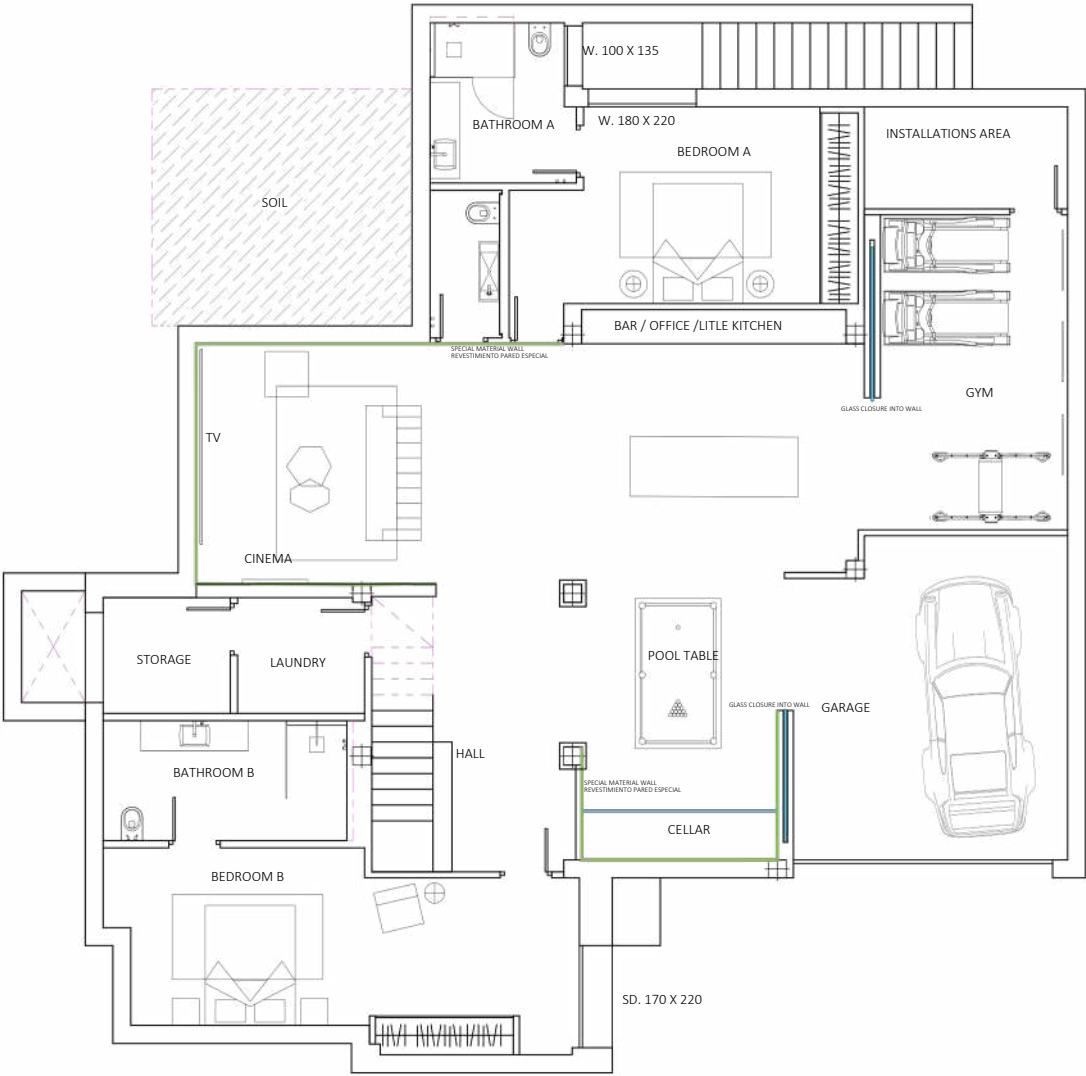
VILLA FLORENCE

CONTEMPORARY ANDALUSIAN. OPEN LAYOUT, BESPOKE FINISHES. SPACE TO GATHER,
SPACE TO RETREAT. CLOSE TO GOLF, OVERLOOKING THE SEA.











Nueva Andalucía, the Golf Valley of Costa del Sol.

Lodged in the picturesque valley known as The Golf Valley—home to world-renowned courses—Nueva Andalucía is an exclusive residential area. The landscape blends rolling hills, lush greenery, palm-lined streets, and carefully groomed fairways, all framed by stunning views of the iconic La Concha Mountain. Broad avenues, wide sidewalks, and designated walking paths enhance its family-friendly charm and suitability for leisurely strolls. Just a 5-minute drive from Puerto Banús and steps from vibrant spots like Centro Plaza and Marbella Arena-Auditorium, it is a highly sought-after location on the Costa del Sol.

