

Rodeo Alto 4



RODEO ALTO 4

Welcome to this brand-new, light-filled townhouse located in an exclusive gated community of just 7 homes. Perfectly positioned just behind the popular Real Padel Club, you're only a 15-minute walk to the beach and just minutes from world-class golf courses.

This stylish home is spread over three levels, offering generous space and smart design.

Ground Floor: One bedroom, one bathroom, fully equipped Siemens kitchen, dining area, spacious living room, and a 20 sqm terrace perfect for indoor-outdoor living.

First Floor: Four bedrooms, two bathrooms, and a cozy 8 sqm terrace.

Rooftop Terrace: A stunning 61 sqm rooftop with pre-installed water and electricity with the possibility to install an outdoor kitchen, jacuzzi, outdoor shower, and more – an ideal for entertaining or relaxing under the sun.





This beautiful townhouse is perfectly positioned in Nueva Andalucia within a walking distance to the beach and Puerto Banus, close to public transport, schools, restaurants, etc - a heaven for sports enthusiasts offering indoor and outdoor gym, padel courts, restaurant and much more.

RODEO ALTO 4

1.150.000 €

BEDS	5
BATHS	3
BUILT	150 m ²
TERRACES	121 m ²
IBI	1409 € / Year
GARBAGE TAX	93 € / Year
COMM FEES	259 € / month





FEATURES

- MODERN TOWNHOUSE
- CLOSE TO BEACH
- FULLY FITTED KITCHEN
- GATED COMMUNITY
- CLOSE TO SHOPS
- AMENITIES NEAR
- HEATED SALTWATER POOL
- 2 PRIVATE GARAGE PARKING
- ROOF TERRACE















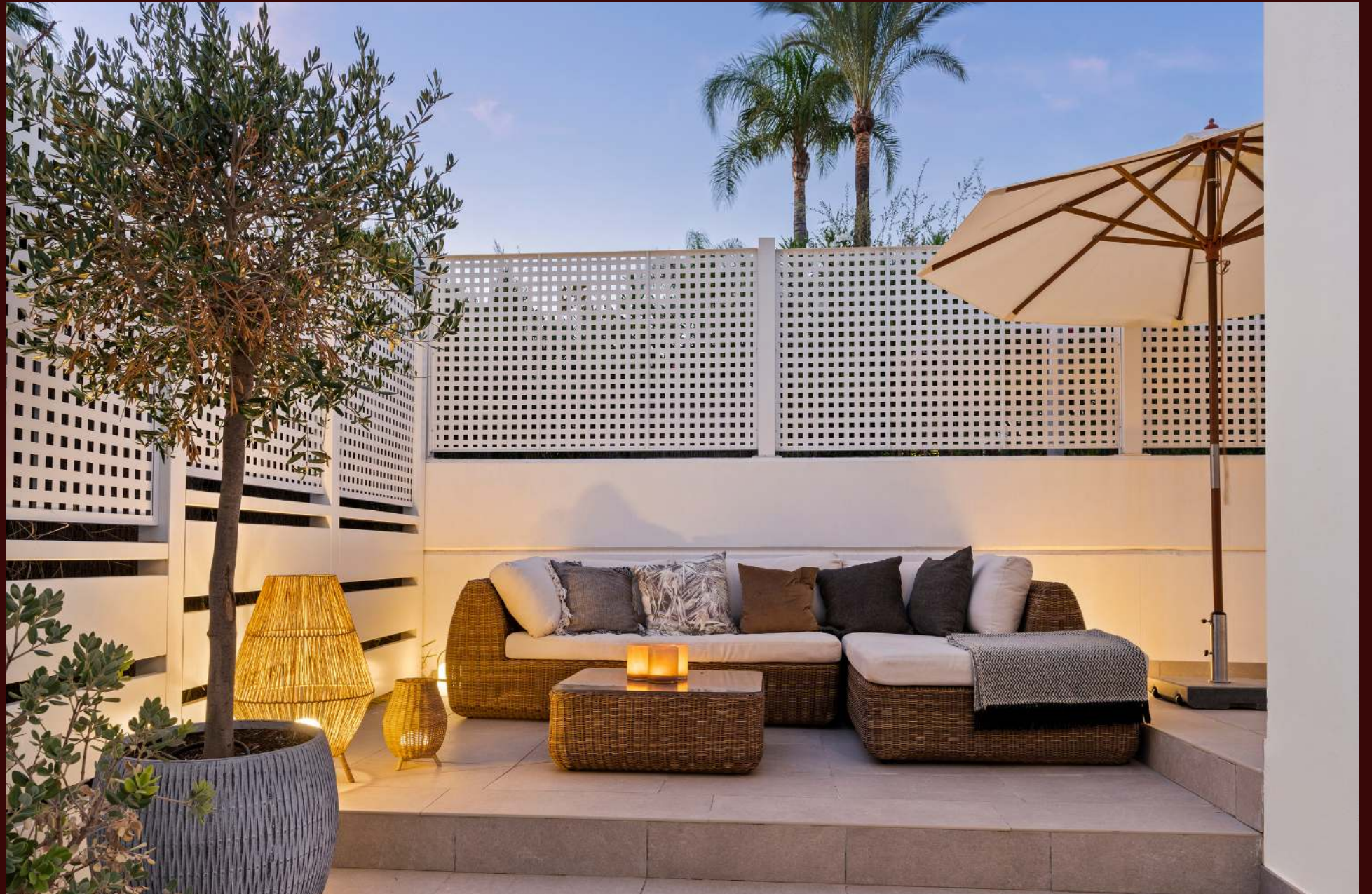


RODEO ALTO 4

**WELCOME TO RODEO ALTO 4, A MODERN TOWNHOUSE IN A GATED COMMUNITY WITHIN
WALKING DISTANCE TO THE BEACH**







Planta Baja



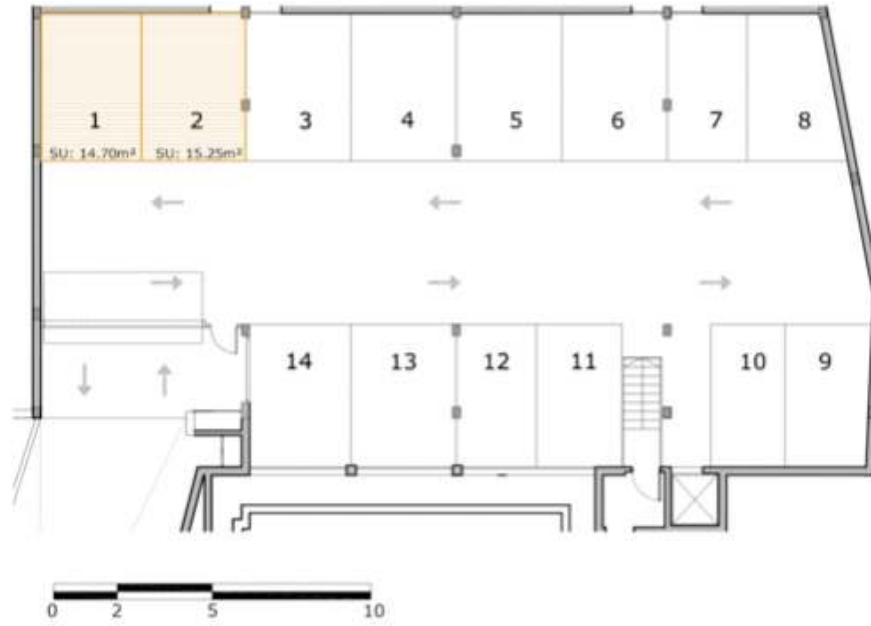
Planta Primera



Planta Solárium



Planta Sótano





Nueva Andalucía, The Golf Valley of Costa del Sol

Lodged in the picturesque valley known as The Golf Valley—home to world-renowned courses—Nueva Andalucía is an exclusive residential area. The landscape blends rolling hills, lush greenery, palm-lined streets, and carefully groomed fairways, all framed by stunning views of the iconic La Concha Mountain. Broad avenues, wide sidewalks, and designated walking paths enhance its family-friendly charm and suitability for leisurely strolls. Just a 5-minute drive from Puerto Banús and steps from vibrant spots like Centro Plaza and Marbella Arena-Auditorium, it is a highly sought-after location on the Costa del Sol.

