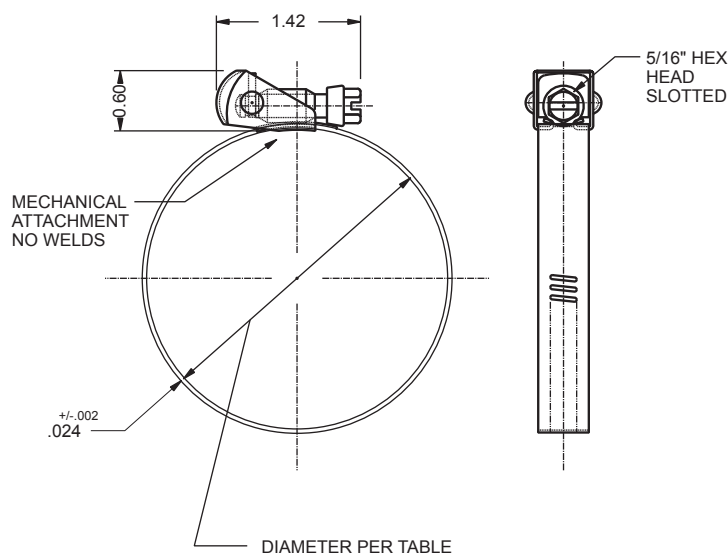
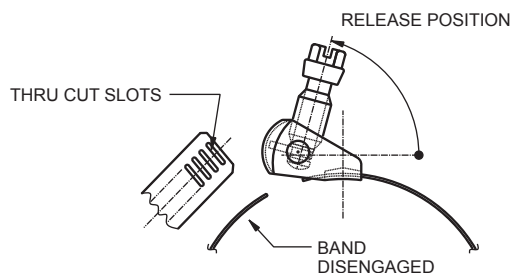
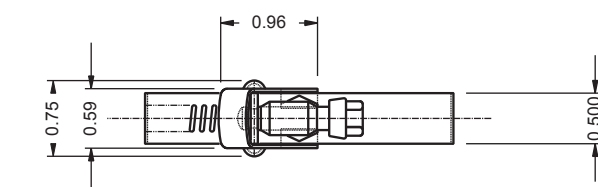


## Type "F" Quick Release Clamp

- 200 series stainless steel band, housing and screw with 400 series stainless steel thrust block
- Easy to install and remove due to the swivel action locking of the screw
- Large clamping range, making them very versatile
- Typically used for closed system installations where the clamp must be opened to be fitted
- Other material configurations available

Part Number	Diameter (inch)		Diameter (mm)	
	Min	Max	Min	Max
QR104S2	2.00	7.00	51	171
QR128S2	2.00	8.500	51	216
QR152S2	2.00	10.00	51	254
QR188S2	2.00	12.25	51	311
QR232S2	2.00	15.00	51	381
QR258S2	2.00	16.63	51	422
QR288S2	2.00	18.50	51	470
QR312S2	2.00	20.00	51	508



Email Your Purchase Order  
to [orderentry@murraycorp.com](mailto:orderentry@murraycorp.com)