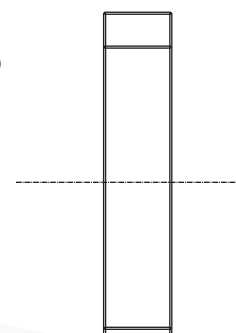
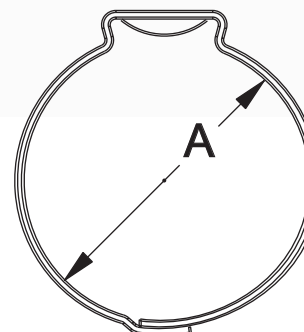
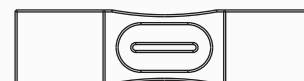


Pinch Clamp (Welded) –SAE Type “J” KS

- All 300 series stainless steel pinch clamp featuring welded construction for durability
- Used on poly pipe, rigid plastic and soft hose
- Keystone geometry design, in the ear area, greatly reduces miscrimps when crimped with a hand tool
- Most common applications are Poly Irrigation Lines, Water Supply, Fuel & Vapor Lines, Beverage Supply Lines, Car Wash Supply Lines, Dust Shields & Air Filters and Bundles of Cable.



"A" Diameter Range					
Base Part Number	Metric Min	Metric Max	Decimals Min	Decimals Max	
KS 3133	11.4	13.3	0.45	0.525	
KS 3150	12.5	15	0.49	0.59	
KS 3157	13.2	15.7	0.52	0.62	
KS 3161	13.6	16.1	0.535	0.635	
KS 3165	14	16.5	0.55	0.65	
KS 3173	14.7	17.3	0.58	0.68	
KS 3185	16	18.5	0.63	0.73	
KS 3198*	16.6	19.8	0.655	0.78	
KS 3210*	17.9	21	0.705	0.83	
KS 3222	19.1	22.2	0.75	0.875	
KS 3236	20.5	23.6	0.805	0.93	
KS 3256*	22.5	25.6	0.885	1.01	
KS 3271*	24	27.1	0.945	1.07	
KS 3301	27	30.1	1.06	1.185	
KS 3316*	28.5	31.6	1.12	1.245	
KS 3324	29.3	32.4	1.155	1.275	
KS 3331*	30	33.1	1.18	1.3	
KS 3346*	31.5	34.6	1.24	1.36	
KS 3396	36.5	39.6	1.44	1.56	
KS 3410*	37.9	41	1.49	1.615	
KS 3425*	39.4	42.5	1.55	1.675	
KS 3485*	45.5	48.5	1.787	1.91	



This clamp requires a tool to seal correctly, available from Murray. See Tools page near the back of this catalog for more details.

*Popular irrigation sizes are available for immediate shipment packaged in poly bags. Please inquire on availability of other packaging configurations and lead time for other sizes. Other sizes, shapes and materials are available upon request, subject to minimum order quantities

Full part number consists of base part number plus packaging suffix. Add 00C to end of base part number for bulk, or 00P100 to end of base part number if packed.



Email Your Purchase Order to orderentry@murraycorp.com