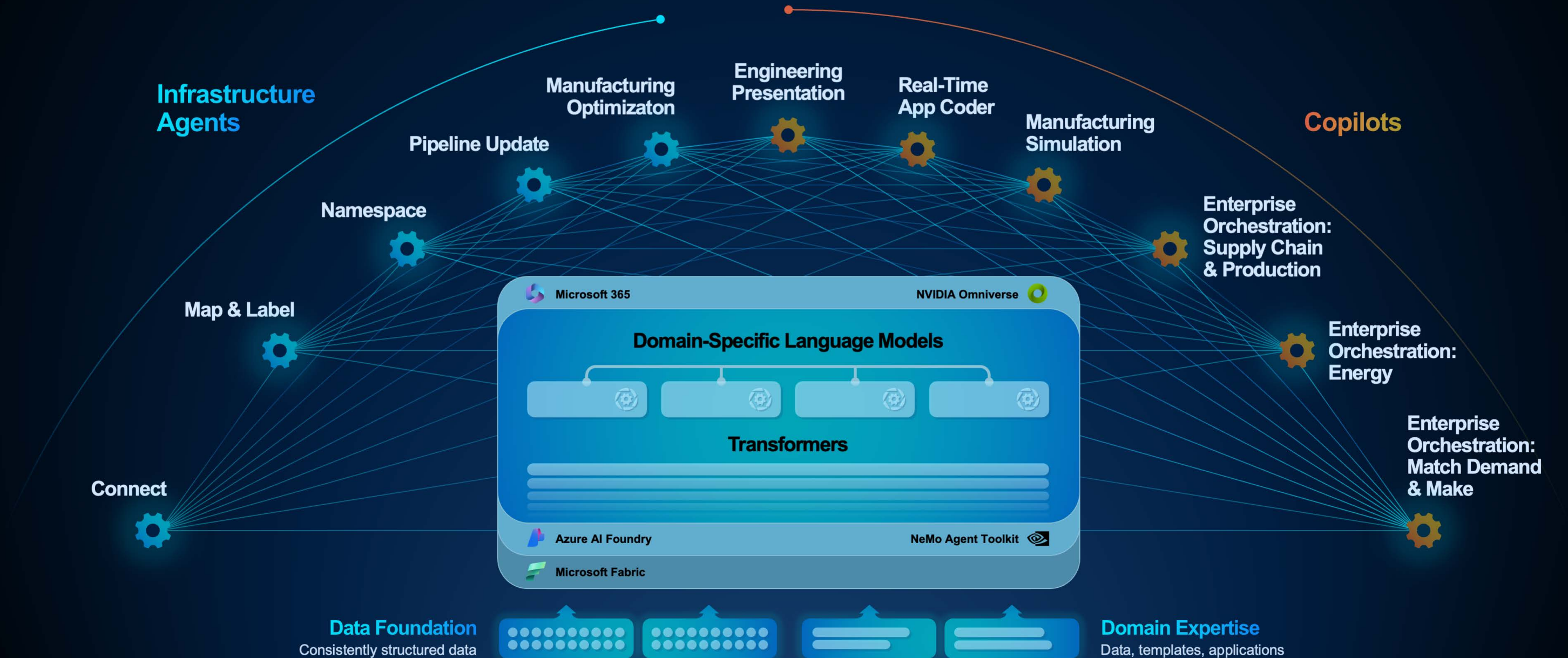


The Sight Machine Offering: Structuring Data Is at the Core

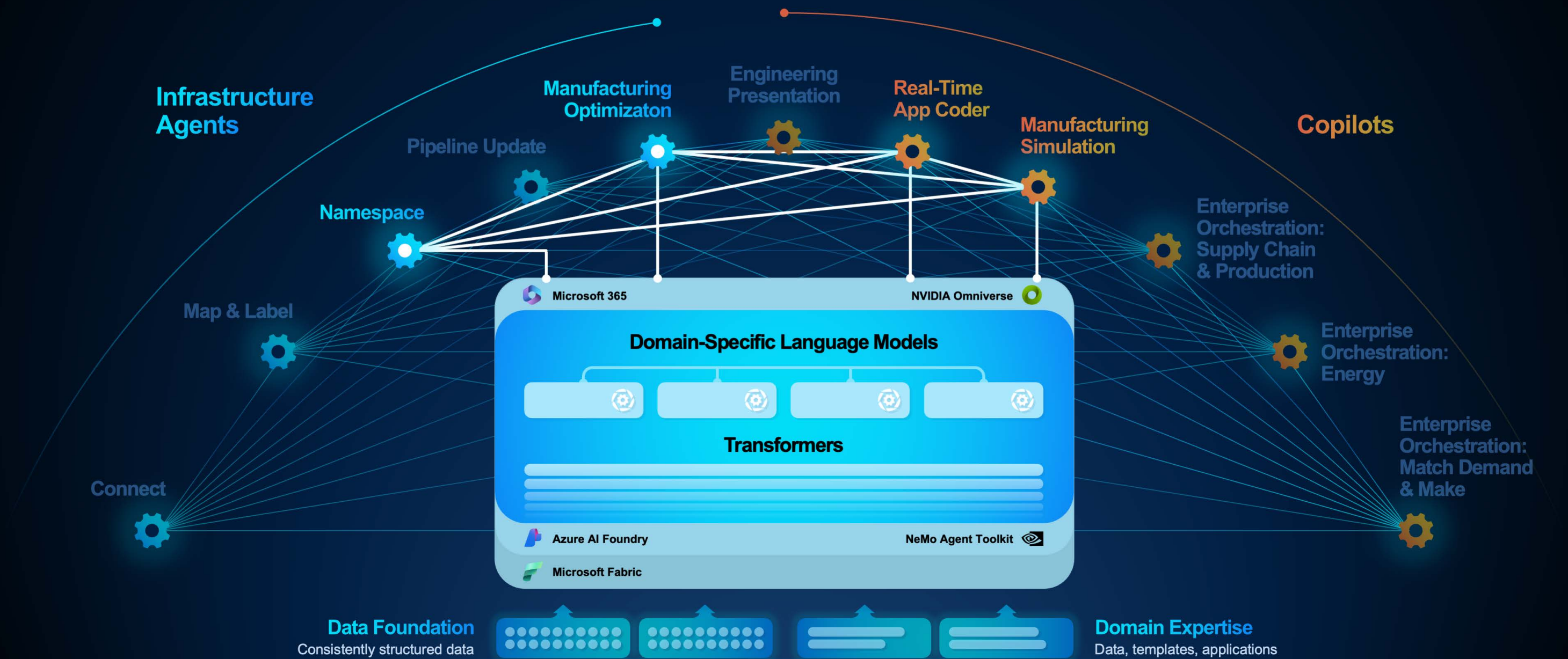
Data transformation is automated, early, and universal. Highly variable plant floor data is ingested, labeled, continuously structured into four common building blocks of information (Data Foundation), associated into models (twins), and analyzed in real time



Agents Are Used Both to Implement and Scale (Infrastructure Agents) and to Optimize and Analyze through Orchestration (Copilots)

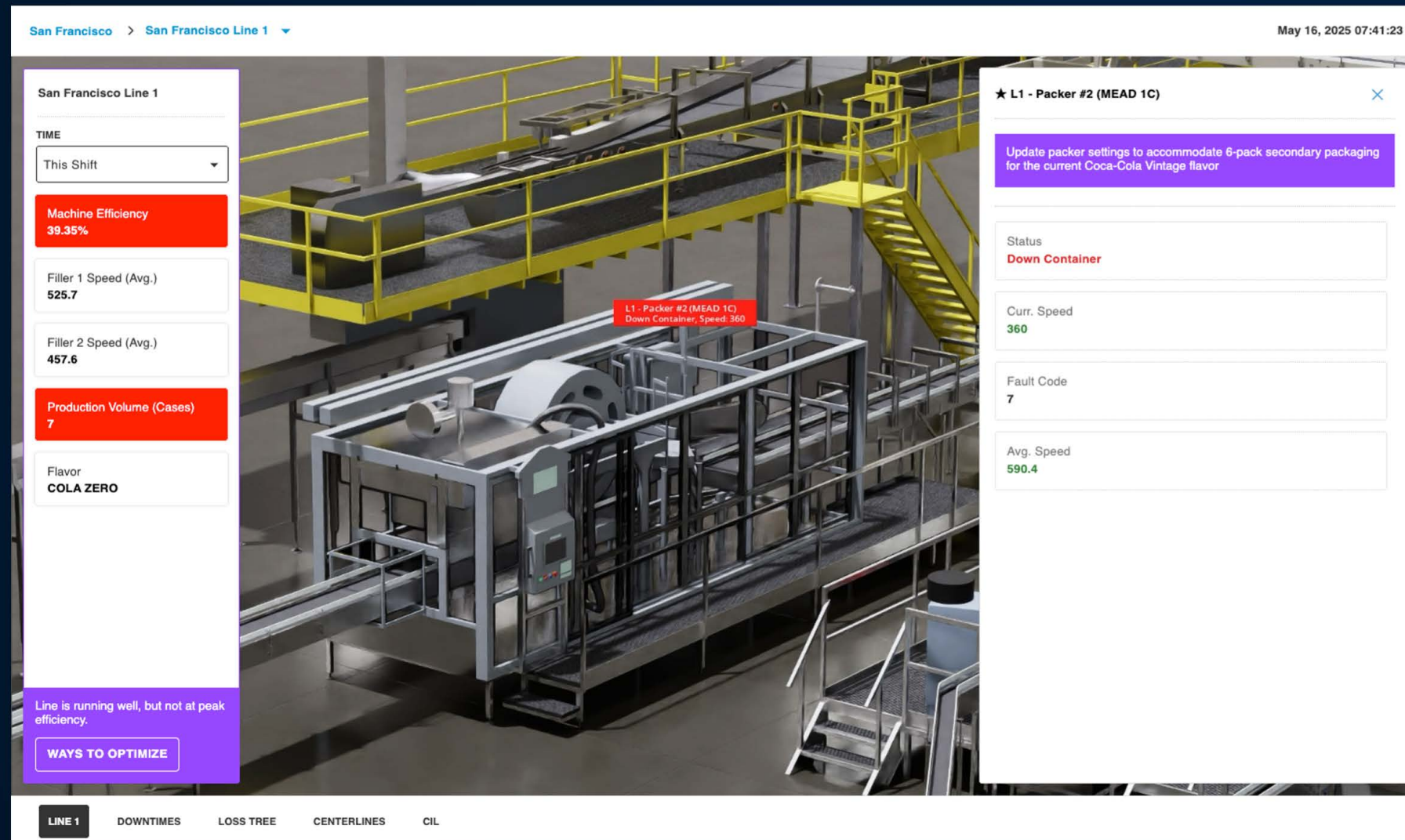


Orchestration through LLMs



Operator Agent: Representative Use of Agents and 3D

The Microsoft, NVIDIA + Sight Machine Joint Solution Delivers Value in Weeks



Real-world Results

Initial Outcomes in Weeks

20%

Improvement to profitability in a leading packaging manufacturer's first plant. This manufacturer is now using the platform in 10+ plants

78%

Reduction in defects from glass furnace

\$750k/line/year

In avoided downtime through prediction and avoidance of VFDs failure at bottling plant