



# PACIFIC LIFTER

## CRANE BARGE

### SPECIFICATIONS

#### DIMENSIONS

Length (Overall)	400 ft	0 in	121 m	92 cm
Breadth	99 ft	6 in	30 m	18 cm
Depth	25 ft	0 in	7 m	62 cm
Draft	15 ft	6 in	4 m	72 cm

#### TONNAGE

Gross Tonnage	7,132 GT ITC	8,986 GRT
Net Tonnage	6,574 NT ITC	8,986 NRT

#### GENERAL

Year Built	1981
Accommodations	Customizable to Project
Helo Pad	Customizable to Project

#### ANCHORING

Anchoring System	4 point / 30,000 lb Anchors
Winches	Timberland
Operating Range	Rated for Inland Waters

#### MACHINERY

Energy	450 V, 120 V, 60 Hz
Auxiliary Generators	(2) 240 KW

#### PRIMARY CRANE

Manufacturer	American Hoist & Derrick
Model	509 Revolver
Power	Diesel / Diesel Electric

#### HOOK CAPACITY

Capacity (Over Bow)	860 ST	780 MT	@	70 ft	21 m
Capacity (Full Revolving)	600 ST	544 MT	@	76 ft	23 m
Auxiliary	175 ST	159 MT			
Whip	25 ST	4.5 MT			

#### AUXILIARY CRANE

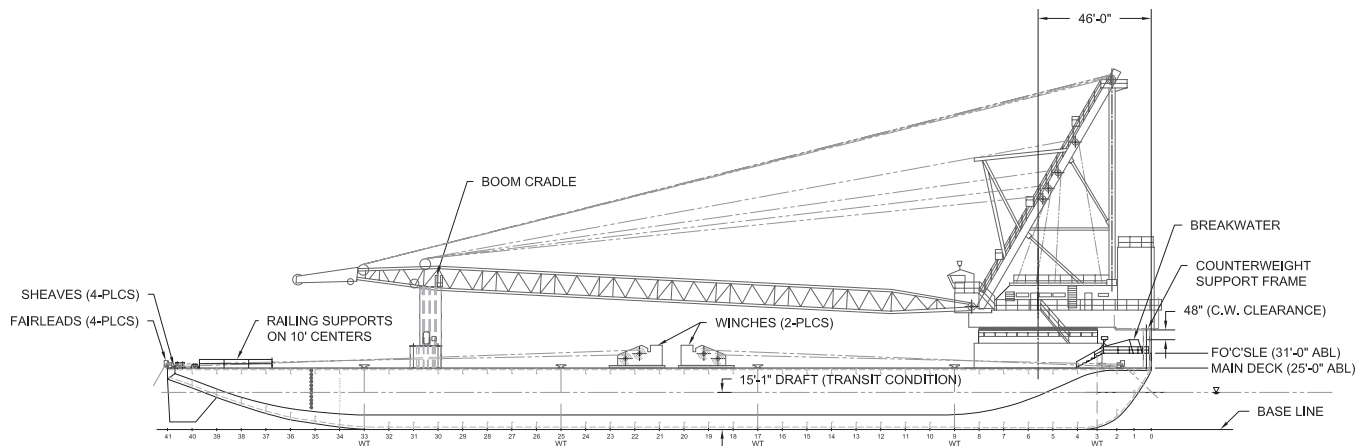
Manufacturer	American
Model	9299
Capacity	165 ST 150 MT
Powered by	Diesel

#### BOOM LENGTH

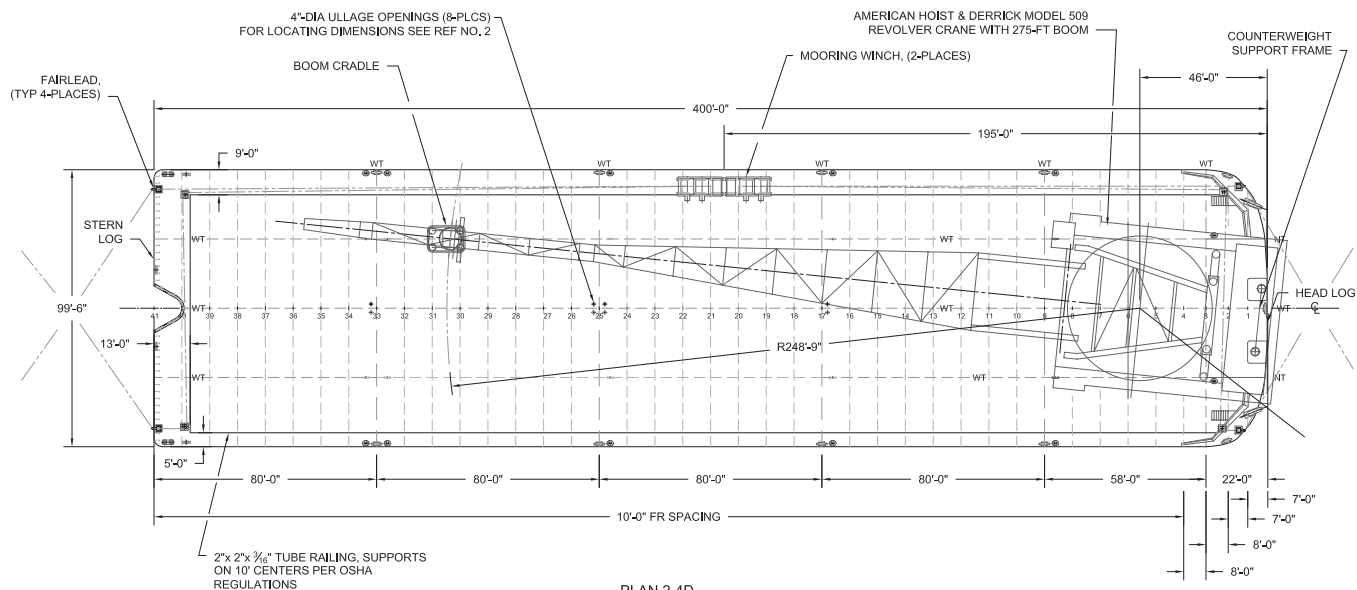
Main	230 ft	70 m
Auxiliary	262 ft	80 m
Whip	276 ft	84 m

\* Specification sheet measurements and weights rounded to nearest whole number.





ELEV 3-4D  
OUTBOARD PROFILE  
SCALE: 1" = 40'-0"



PLAN 2-4D  
MAIN DECK ARRANGEMENT  
SCALE: 1/32" = 1'-0"