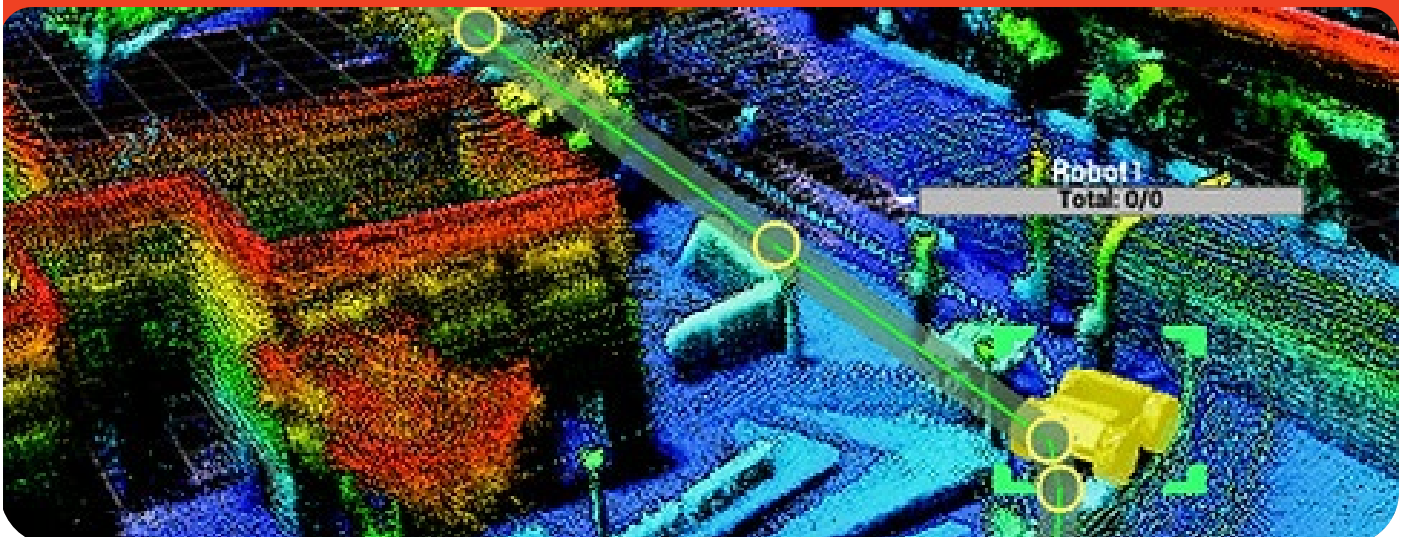


Purpose-built robot  
and third-party  
robot navigation  
retrofitting services



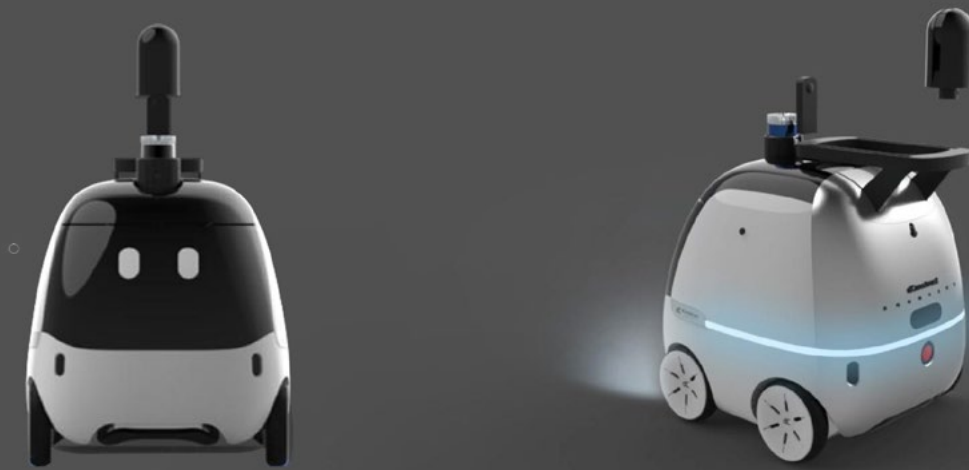
# d.ASH-ER



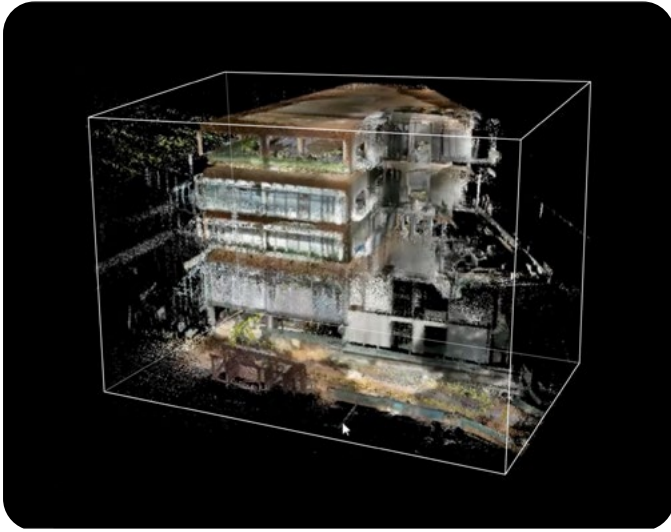
# d.ASH-ER

Introducing d.ASH-ER, the purpose-built robot that performs multiple functions. Its advanced sensors and cameras inspect and monitor environments, identify potential issues, efficiently transport goods and supplies with care and precision.

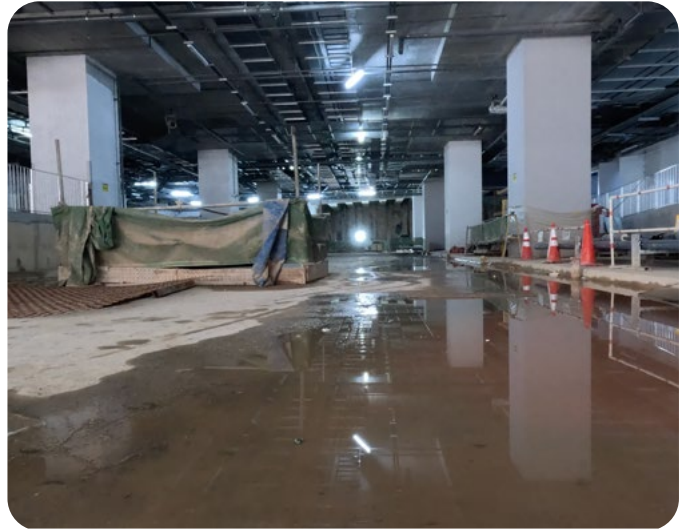
Its friendly demeanor and interactions make it an ideal addition to any office or building, enhancing the overall customer experience. With its sleek design and advanced capabilities, d.ASH-ER streamlines processes, increases productivity, and enhances the customer experience.



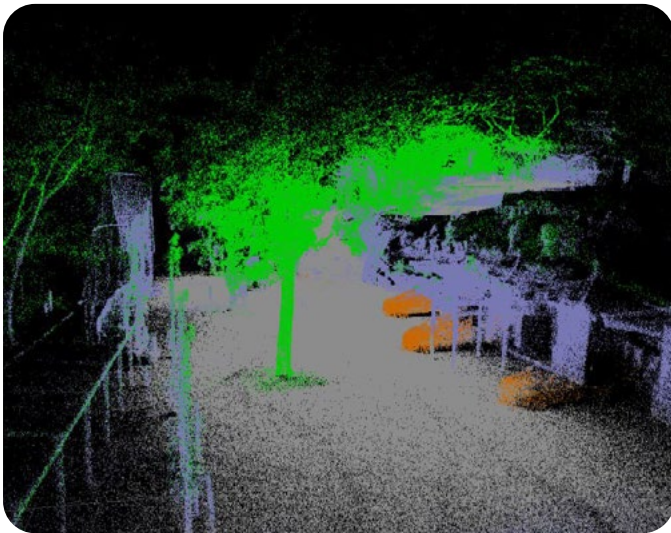
# FEATURES



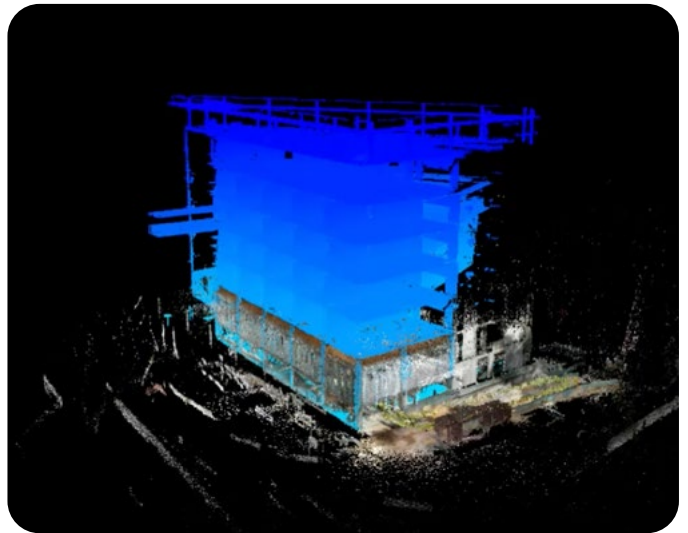
**Volumetric Measurement**



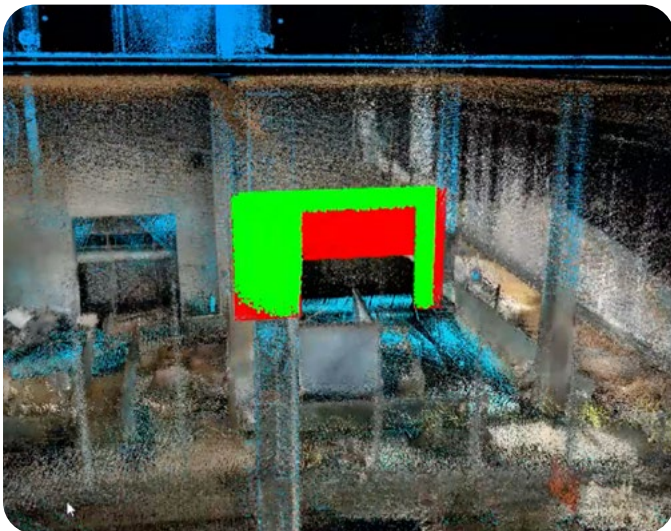
**Live Streaming**



**Object Segmentation**



**Change Detection**



**Compare with BIM**



**Follow-Me Feature (Option)**





### Last-mile Delivery

Improve last mile delivery by reducing delivery times, increasing efficiency, and reducing the need for human intervention. d.ASH-ER with state of art navigation software, delivers accurately and safely.



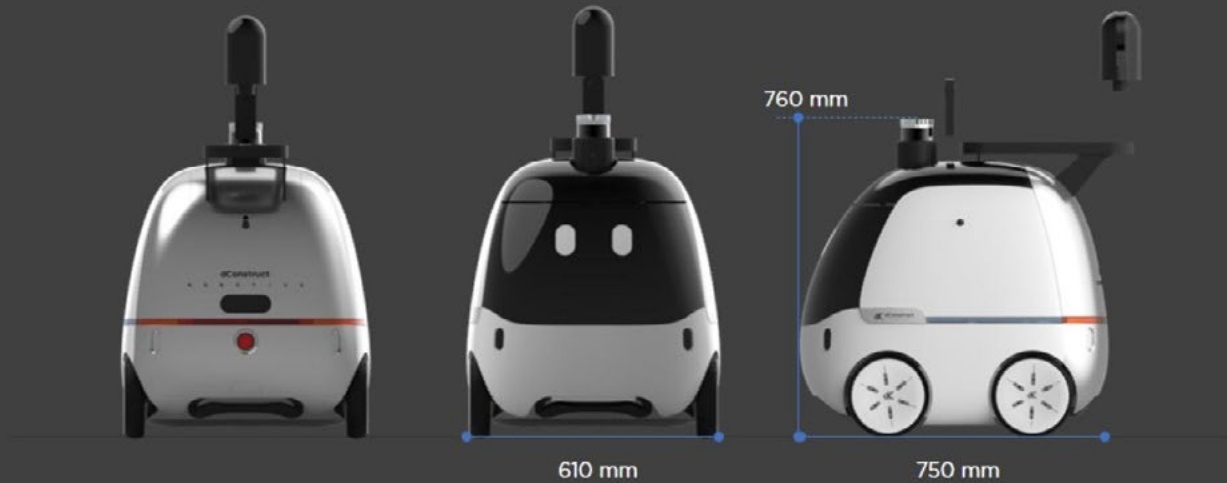
### Safety & Security

d.ASH-ER equipped with cameras and sensors can improve safety and security by providing enhanced capabilities of inspection, detection and response to various threats and emergencies.



### Mapping on-the-go

Reality capture on-the-go enables robots to adapt to changing environments, avoid obstacles, and perform tasks such as management and inspection. It's ideal for industries with constantly changing environments where quick, accurate decision-making is crucial for efficient operations.



## d.ASH-ER with Robot++ MR600 Robot Base

### CORE SPECIFICATIONS

Weight:	35 Kilograms
Size:	610mm x 760mm x 750mm
Operation Hour:	5 Hours

#### SPEED

Speed:	Up to 1m/s
Rated Travelling Load:	10 kg

#### POWER REQUIREMENTS

Voltage:	220V AC
Charging Time:	3.5 Hr
Battery:	48V 15Ah
Power Output:	500W
Charging Input:	220VAC/300W

Motion:	Differential Wheeled Robot
Remote Control:	2.4GHz ISM, distance $\leq 200\text{m}$
Operating temperature:	-10 ~ 45 °C

#### SAFETY

Water Resistance:	IP52
Emergency Stop Buttons:	1
Collision:	Front+rear anti-collision rod

Communication Interface:	RS232
--------------------------	-------



dConstruct Robotics  
10 Central Exchange Green  
#03-01, #03-02  
PIXEL Singapore 138649



**For more information, please contact** +65 8787 7480 | [hello@dconstruct.co](mailto:hello@dconstruct.co) | [dconstruct.co](https://dconstruct.co)