



Aivia

**300
& 320**

**SMART MONITORING WALL CABINET FOR
AUTOMATED EXTERNAL DEFIBRILATOR (AED)**



hd1py

AIVIA Model 300

SMART AED

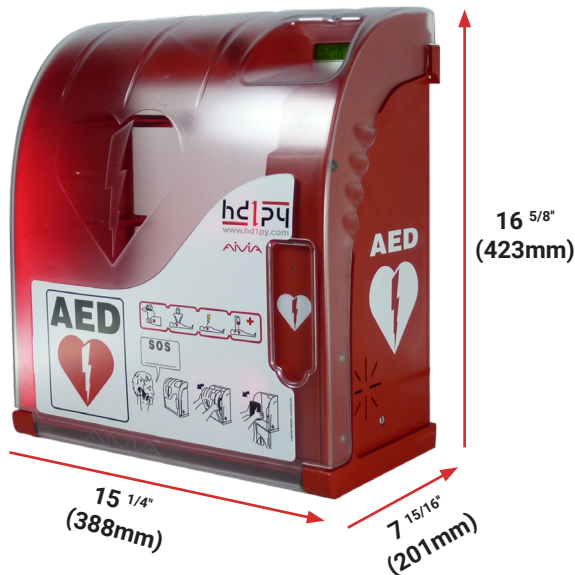
MONITORING CABINET

The AIVIA 300 allows the remote monitoring of the hardware via Internet.

This model is an intelligent AED protective cabinet which is permanently connected to the AIVIAnet server through http, ensuring that all the AIVIA units remain fully operational at all times.

The AIVIA 300 has the ability to constantly monitor its own functions, the presence and the operability of the AED as well as its immediate surroundings and status.

It provides realtime information concerning incidents and events.

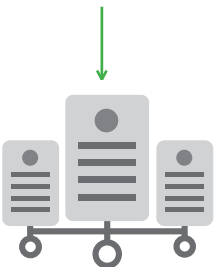
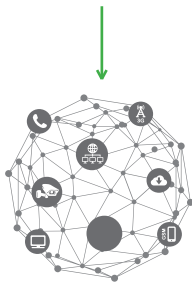
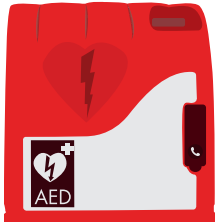


Weight : 7.72 lbs
(3.5kg)

OVERVIEW

STANDARD FEATURES

- ✦ Impact-resistant transparent polycarbonate cover and red ABS base
- ✦ Sensor monitoring the presence of the AED and the temperature surrounding the defibrillator
- ✦ Backlit LCD screen displaying the status of the power, network, temperature and presence of the AED
- ✦ Protected access to the AED thanks to security seal stickers
- ✦ Local visual warnings (flashing red LEDs) indicating incidents
- ✦ Connection to local (LAN) Ethernet network plus possibility of wireless communication
- ✦ Integrated light sensor to light up the AED compartment in dark locations
- ✦ 24V DC SELV (Safety Extra Low Voltage) for human safety
- ✦ RFID badge reader for maintenance purposes
- ✦ Rechargeable back-up battery for essential functions in case of power supply failure



SPECIFIC FEATURES

- ✦ Constant remote monitoring of the AED through a sensor
- ✦ Optional optical sensor allows a remote assistance for the monitoring of the AED status indicator *
- ✦ Http communication between the AIVIA cabinet and the AIVIANet server Realtime
- ✦ Information concerning incidents or events
- ✦ Immediate and automatic routing of data via Email / SMS
- ✦ Optional photo surveillance when the cabinet is opened and the AED unit removed
- ✦ Outdoor version : A controlled convection heating and fanning system, activated through a temperature sensor and configured thresholds. Heating effective in temperature down to -4°F (-20°C).

* It does not substitute for maintenance actions recommended by AED manufacturers.



AIVIA Model 320

SMART AED

MONITORING CABINET

The AIVIA 320 allows automatic GSM phone calls in case of emergency as well as the remote monitoring of the hardware via Internet.

Having an emergency calling terminal status, this model is an intelligent AED protective cabinet which is permanently connected to the AIVIAnet server through http, ensuring that all the AIVIA units remain fully operational at all times.

The AIVIA 320 has the ability to constantly monitor its own functions, the presence of the AED as well as its immediate surroundings and status. It provides realtime information concerning incidents and events.



Weight : 7.72 lbs
(3.5kg)

OVERVIEW

STANDARD FEATURES

- ✦ Impact-resistant transparent polycarbonate cover and red ABS base
- ✦ Sensor monitoring the presence of the AED and the temperature surrounding the defibrillator
- ✦ Backlit LCD screen displaying the status of the power, network, temperature and presence of the AED
- ✦ Protected access to the AED thanks to security seal stickers
- ✦ Local visual warnings (flashing red LEDs) indicating incidents
- ✦ GSM : Emergency phone connection via the mobile phone network, using hands free telephone intercom. Automatic phone call is made in case of emergency when the cabinet is opened or when the call button is pushed as preset by user.
- ✦ Connection to local (LAN) Ethernet network plus possibility of wireless communication
- ✦ 4G communication : In addition to the standard Ethernet LAN connection, AIVIA 320 and the AED it contains can also be monitored by 4G communication through the mobile phone network if a LAN connection is not available.
- ✦ Integrated light sensor to light up the AED compartment in dark locations
- ✦ 24V DC SELV (Safety Extra Low Voltage) for human safety
- ✦ RFID badge reader for maintenance purposes
- ✦ Rechargeable back-up battery for essential functions in case of power supply failure

SPECIFIC FEATURES



- ✦ Constant remote monitoring of the AED through a sensor
- ✦ Optional optical sensor allows a remote assistance for the monitoring of the AED status indicator *
- ✦ Http communication between the AIVIA cabinet and the AIVIANet server Realtime
- ✦ Information concerning incidents or events
- ✦ Immediate and automatic routing of data via Email / SMS
- ✦ Optional photo surveillance when the cabinet is opened and the AED unit removed
- ✦ Outdoor version : A controlled convection heating and fanning system, activated through a temperature sensor and configured thresholds. Heating effective in temperature down to -4°F (-20°C).

* It does not substitute for maintenance actions recommended by AED manufacturers.



Optional ventilation fan
and convector heating device
for outdoor positioning

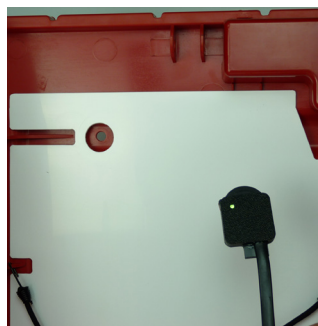


Infra-red lens taking
pictures upon the opening
of the cabinet and removal
of the AED



Call button to
activate GSM hands
free telephone module.

Only 320



Sensor to assist
the remote monitoring
of the AED status,
temperature, and presence.



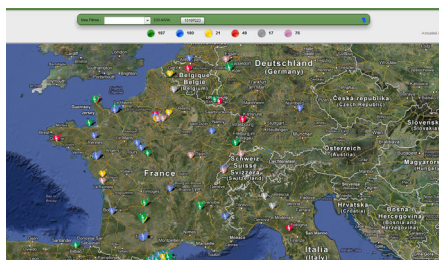
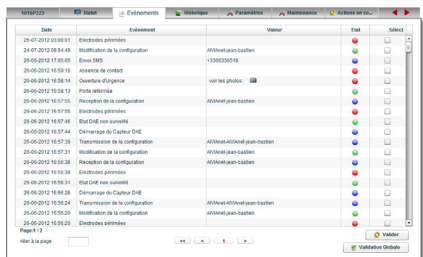
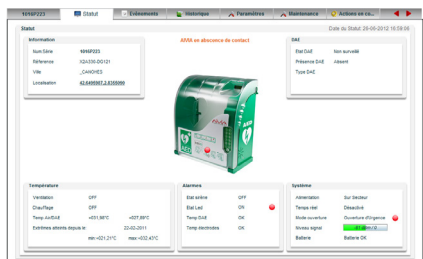
LCD screen displaying
general status or incidents : power,
network, AED, temperature

AIVIANET SERVER

The AIVIANet server is a software application which ensures straightforward, remote and around-the-clock monitoring of the AIVIA cabinet and the presence of the AED stored within.

Accessible through secure access from any computer connected to the Internet, the AIVIANet server offers constant remote monitoring of the AED and its protective cabinet, providing realtime information concerning incidents or events which may occur.

- ✦ Multilingual version requiring a username and password to access the server
- ✦ Incidents displayed with the possibility of verifying and logging information and events
- ✦ One or several AIVIA cabinet(s) monitored at any time (presence of the AED, photos taken upon opening the cabinets, control system, alarms...)
- ✦ Programmable to send Email / SMS alerts to one or more recipients should an incident occur
- ✦ Recordkeeping of past incidents
- ✦ Color-coded data Interpretation
- ✦ Geolocation of any AIVIA cabinet connected to the network



In addition to monitoring AIVIA cabinets, the AIVIANet application is an easy-to-use online tool for the configuration and maintenance of these cabinets, featuring an online diagnostic capacity.

- ✦ Configuration can be modified from the server
- ✦ Online diagnostic capability and interpretation by error code
- ✦ Details and automatic routing of incidents (Emails/SMS wordings, recipients...)
- ✦ Recordkeeping of maintenance events for each AED and cabinet
- ✦ Instructions concerning necessary preventative actions (keeping users informed of the expiration of the pads and batteries, serial numbers...)

