

# HEDA TOUGH WALL SYSTEM

HEDA Jamb63, HEDA Jamb90

**STUDCO**  
BUILDING SYSTEMS

Leaders in Innovative  
Building Products

## HEDA TOUGH WALL SYSTEM

### **i** DESCRIPTION

The HEDA Tough Wall System from Studco is your premium solution for maximising wall frame design and reducing labour in medium and high-rise construction. The HEDA System offers a fast and easy way of creating openings in walls in both internal and external applications.

Traditionally, wall openings have required two or three studs at each side of the jamb and a series of studs and track to act as a lintel. Whilst this method remains highly popular, the new HEDA system from Studco uses fewer sections and fewer connections, thereby greatly decreasing construction time and simplifying the construction process.

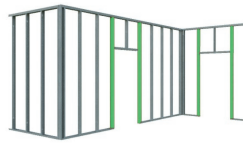
### **💡** APPLICATION

HEDA sections can be used as lightweight steel lintels, heavy duty jamb studs and extra-tough wall studs in extreme walls.



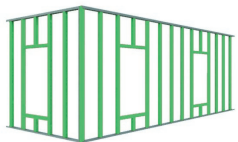
#### EXTERNAL OPENINGS

Use HEDA system for lintels, headers, sills and jambs in external openings for windows and doors.



#### INTERNAL OPENINGS

Replace boxed studs with one HEDA section in doorways and large openings.

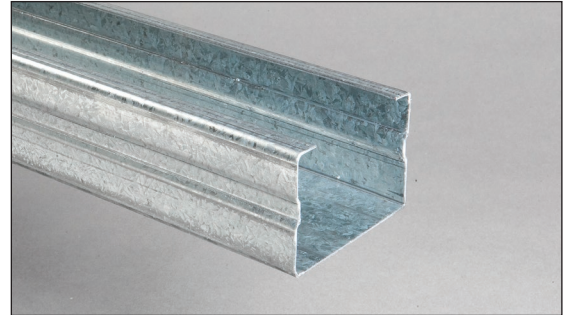


#### EXTREME WALLS

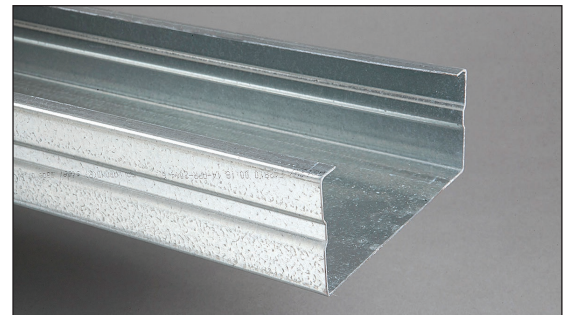
Extreme heights, extreme loads and extreme performance... no problems for HEDA.

### **💬** FEATURES

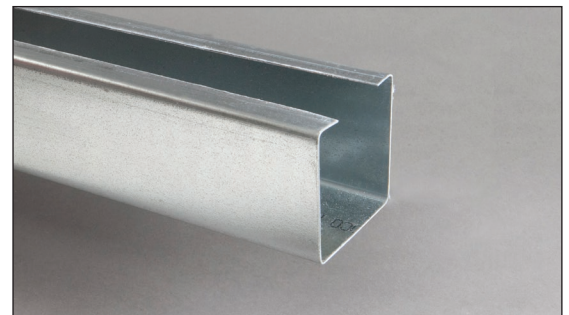
- Offers a fast and easy way of creating openings in walls in both internal and external applications.
- New profile provides enhanced rigidity.



HEDA Jamb 63 (92mm wide)



HEDA Jamb 63 (150mm wide)



HEDA Jamb 90 (92mm wide)

# HEDA TOUGH WALL SYSTEM

HEDA Jamb63, HEDA Jamb90



## BENEFITS

### TIME SAVING

- No need for boxed studs at internal opening or doorways.
- No need for boxed or back-to-back studs in wall designs.
- No need for complex lintel arrangements.

### COST SAVING

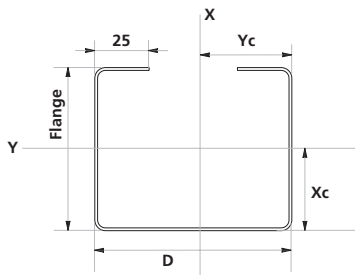
- Replace some structural sections with HEDA Jamb.
- Fewer noggins required in HEDA Jamb walls.
- Achieve huge spans not possible with conventional studs.



## SPECIFICATIONS/TECHNICAL DATA

The HEDA System has been fully engineered to meet BCA requirements and Australian Standards, ensuring you of code compliance whenever you use Studco's HEDA System.

### HEDA Jamb90



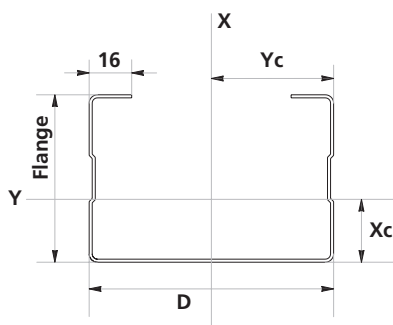
#### SECTION DIMENSIONS - HEDA

Part No.	D	Flange	Lips	BMT	Xc	Yc
HJ9289155†	92	89.9	25.4	1.55	41.33	46.0

#### FULL SECTION PROPERTIES - HEDA

Part No.	BMT mm	Area mm <sup>2</sup>	Ixx 10 <sup>3</sup> mm <sup>4</sup>	Iyy 10 <sup>3</sup> mm <sup>4</sup>	Zxx 10 <sup>3</sup> mm <sup>3</sup>	Zyy 10 <sup>3</sup> mm <sup>3</sup>	rx mm <sup>2</sup>	ry mm	Iw 10 <sup>6</sup> mm <sup>6</sup>	J mm <sup>3</sup>
HJ9289155†	1.55	479.69	730.1	553.5	15.7	12.03	39.014	33.968	1280	384.15

### HEDA Jamb63



#### SECTION DIMENSIONS - HEDA

Part No.	D	Flange	Lips	BMT	Xc	Yc
HJ9263150	92	63	16	1.50	23.65	46
HJ15063115	150	63	16	1.15	19.34	75

#### FULL SECTION PROPERTIES - HEDA

Part No.	BMT mm	Area mm <sup>2</sup>	Ixx 10 <sup>3</sup> mm <sup>4</sup>	Iyy 10 <sup>3</sup> mm <sup>4</sup>	Zxx 10 <sup>3</sup> mm <sup>3</sup>	Zyy 10 <sup>3</sup> mm <sup>3</sup>	rx mm <sup>2</sup>	ry mm	Iw 10 <sup>6</sup> mm <sup>6</sup>	J mm <sup>3</sup>
HJ9263150	1.5	367	538.9	207.7	11.9	5.41	38.31	23.78	419.6	275
HJ15063115	1.15	350	1268.2	192	17.04	4.46	60.21	23.43	889.5	154

### Notes:

1. Section properties are approximate only and may be subject to revision.
2. Section properties tabulated are gross section properties.
3. The strength and serviceability section capacities are based on effective section properties calculated in accordance with AS 4600 "Cold Formed Steel Structures Code."
4. \*Steel Grade G450. †Steel Grade G300. Jamb90 Steel Grade G300.

# HEDA TOUGH WALL SYSTEM

HEDA Jamb63, HEDA Jamb90



Leaders in Innovative Building Products

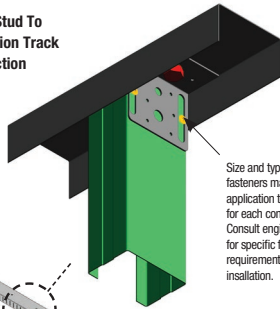


## INSTALLATION NOTES

The HEDA Jamb section can be used for both opening jamb (vertical members) and the lintels and sills (horizontal members) and it eliminates the need for using multiple studs and stud/track combinations.

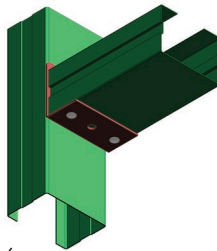
To connect the HEDA Jamb to adjoining members, a new bracket is used, known as the M104 HEDACONNECTOR. This versatile bracket is suitable for all connections required around the openings, eliminating the need for ordering different brackets for different connections.

**Fig. 1** Jamb Stud To Deflection Track Connection



Size and type of fasteners may vary from application to application. Consult engineer for specific fastener requirements prior to installation.

**Fig. 2** Jamb Stud To Lintel/Sill Connection

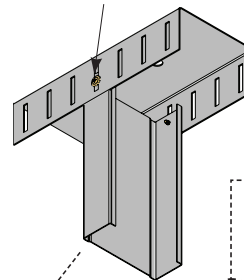


Fix studs through slots to allow for building movement (deflection).

**CONSULT STUDCO FOR WALL DESIGNS & SPECIFICATIONS**

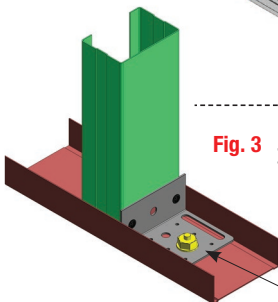
*\* HEDA Jamb63 sections shown in green for illustrative purposes only.*

**Fig. 4** Wall Stud To Slotted Deflection Track Connection (Using std stud as wall stud)



Always ensure tightness of screw is sufficient to allow for deflection if needed.

**Fig. 3** Jamb Stud To Bottom Track Connection



Use HEDA connector (Studco M104) for connection of HEDA Jamb sections. Observe fastener requirements at all times.

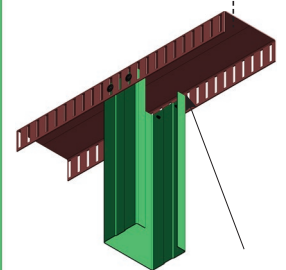
Fix tracks to both flanges of HEDA Jamb at max. 600mm centres at lintel and sill locations

Use Studco 92mm x 1.15BMT steel studs for intermediate wall studs. Consult engineer for spans and spacing.

Use Studco 92mm x 1.15BMT track at bottom.

Use noggings as specified by engineer, where applicable.

**Fig. 5** Wall Stud To Slotted Deflection Track Connection (Using HEDA Jamb as wall stud)



Allow a 20mm minimum gap between wall studs or jamb studs on top track.

Product Datasheet

# HEDA TOUGH WALL SYSTEM

HEDA Jamb63, HEDA Jamb90



Leaders in Innovative Building Products

## ORDERING INFORMATION

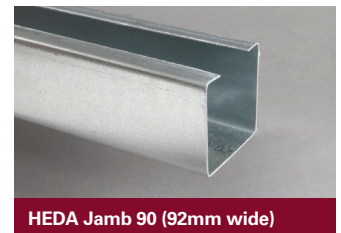
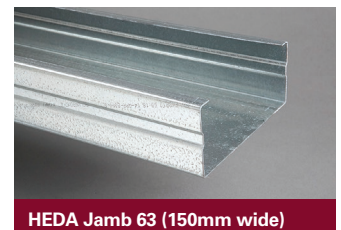
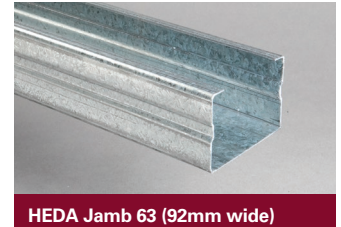
Part No.	<b>HEDA JAMB63</b>	Length mm.	Sub pack	Stock pack	Approx kg/pce
<b>Header Jamb Sections - heavy duty jamb and lintel system.</b>					
HJ9263150-285	Heda Jamb63 92 x 63mm x 16 x 1.50 BMT	2850	1	50	8.36
HJ9263150-30	Heda Jamb63 92 x 63mm x 16 x 1.50 BMT	3000	1	50	8.80
HJ9263150-36	Heda Jamb63 92 x 63mm x 16 x 1.50 BMT	3600	1	50	10.55
HJ9263150-48	Heda Jamb63 92 x 63mm x 16 x 1.50 BMT	4800	1	50	14.07

Part No.	<b>HEDA JAMB63 (150mm-1.15 BMT)</b>	Length mm.	Sub pack	Stock pack	Approx kg/pce
<b>Header Jamb Sections - heavy duty jamb and lintel system.</b>					
HJ15063115#	Heda Jamb63 150 x 63mm x 16 x 1.15 BMT	3000	1	50	8.38

#Custom length HEDA Jamb63 available rolled to order. Lead times may apply.

Part No.	<b>HEDA JAMB90</b>	Length mm.	Sub pack	Stock pack	Approx kg/pce
<b>Header Jamb Sections - heavy duty jamb and lintel system.</b>					
HJ9289155-285	Heda Jamb90 92 x 89mm x 25 x 1.55 BMT	2850	10	100	9.43
HJ9289155-36	Heda Jamb90 92 x 89mm x 25 x 1.55 BMT	3600	10	100	11.92
HJ9289155-48	Heda Jamb90 92 x 89mm x 25 x 1.55 BMT	4800	10	100	15.89

Part No.	<b>HEDA BRACKET</b>	Length mm.	Sub pack	Stock pack	Approx kg/pce
<b>Heavy duty structural wall brace for free standing walls.</b>					
M104	Slotted Heda Connector		50	50	0.15
M107	Heda Lintel/Sill Connector		40	40	0.27



## WARRANTY

This product is covered by Studco's Warranty. Conditions and limitations of warranties are set out in Studco Project Warranty certificate.

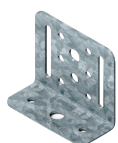
## FURTHER ASSISTANCE

Contact the Technical Team at Studco for assistance with specifications, product selection, acoustic engineering, and structural engineering enquiries. Call on 1300 255 255 or contact us at sales@studcosystems.com.au.

## ACCREDITATION



## RELATED PRODUCTS/COMPONENTS



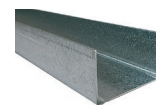
Studco M104 HEDA connector



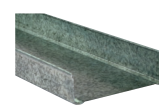
Studco 92mm x 1.15 BMT stud



Studco RapidTrack slotted deflection track



Studco Deflection track 80mm x 1.15 BMT



Studco 92mm x 1.15 BMT track

Information contained within this document supersedes all previous versions and is subject to change without notice.

**For Sales Enquiries, please contact Studco Building Systems on 1300 255 255**