

Insulation



# Kooltherm® K8 Cavity Board

Cavity Wall Insulation



- Rigid thermoset phenolic insulation
- Fibre-free, closed cell insulation core
- Clear cavity is maintained – resists moisture penetration
- Foil facings significantly increase the thermal resistance of the cavity
- Easy to handle and install
- Manufactured with a blowing agent that has zero ODP and low GWP
- NCC and AS/NZS 4859.1:2018 compliant
- Made in Australia

Fibre-free  
Core



# Typical Constructions and Total R-values

## Double Brick Cavity Wall

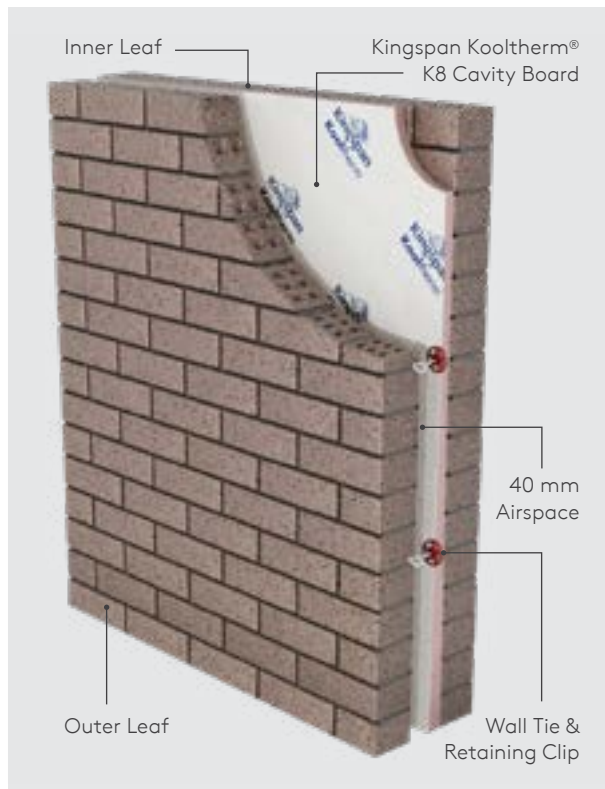


Figure 1. Double Brick Cavity Wall.

## Thermal Performance

Total R-values for various thicknesses of Kingspan Kooltherm® K8 Cavity Board applicable for NCC Volume One, Class 2 to 9 buildings & NCC Volume Two, Class 1 & 10a buildings

Product Thickness	Heat Flow In	Heat Flow Out
25 mm	R <sub>T</sub> 2.2	R <sub>T</sub> 2.3
40 mm	R <sub>T</sub> 2.9	R <sub>T</sub> 2.9

### Assumptions

The R-values shown are Total R-values for the building element as required by the Energy Provisions of the National Construction Code 2022, calculated in accordance with AS/NZS 4859.2:2018. Kingspan Kooltherm® products are manufactured, tested and packaged in conformance with AS/NZS 4859.1:2018.

### Fire Resistance

Examples shown are suitable for NCC Class 1 & 10a housing and Fire-Resisting Construction Type C walls in NCC Class 2 – 9 buildings. For Fire-Resisting Construction Type A & B walls in NCC Class 2 – 9 buildings a Performance Solution is required.

Please contact Kingspan Insulation Technical Services on 1300 247 235 or email [technical@kingspaninsulation.com.au](mailto:technical@kingspaninsulation.com.au) for further guidance.

# Typical Constructions and Total R-values

## Brick / Block Cavity Wall

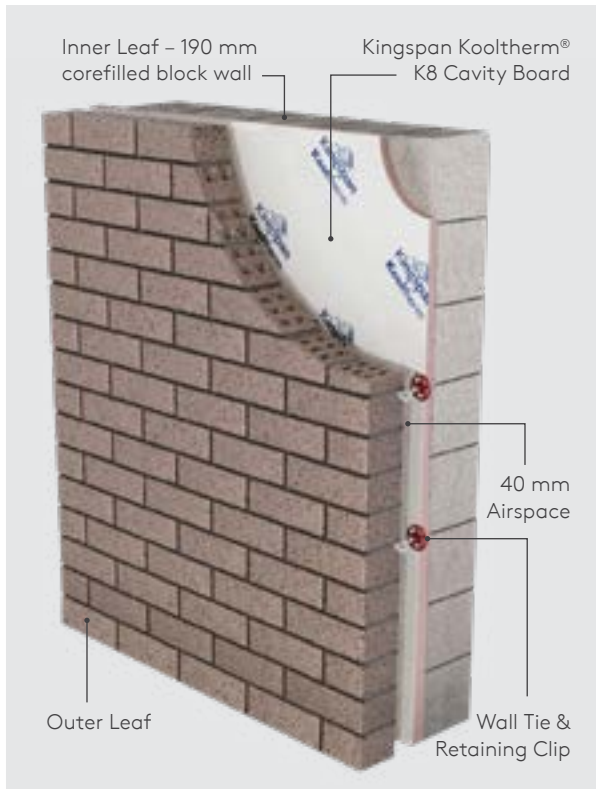


Figure 2. Brick / Block Cavity Wall.

## Thermal Performance

Total R-values for various thicknesses of Kingspan Kooltherm® K8 Cavity Board applicable for NCC Volume One, Class 2 to 9 buildings & NCC Volume Two, Class 1 & 10a buildings

Product Thickness	Heat Flow In	Heat Flow Out
25 mm	R <sub>T</sub> 2.2	R <sub>T</sub> 2.2
40 mm	R <sub>T</sub> 2.8	R <sub>T</sub> 2.9

### Assumptions

The R-values shown are Total R-values for the building element as required by the Energy Provisions of the National Construction Code 2022, calculated in accordance with AS/NZS 4859.2:2018. Kingspan Kooltherm® products are manufactured, tested and packaged in conformance with AS/NZS 4859.1:2018.

### Fire Resistance

Examples shown are suitable for NCC Class 1 & 10a housing and Fire-Resisting Construction Type C walls in NCC Class 2 – 9 buildings. For Fire-Resisting Construction Type A & B walls in NCC Class 2 – 9 buildings a Performance Solution is required.

Please contact Kingspan Insulation Technical Services on 1300 247 235 or email [technical@kingspaninsulation.com.au](mailto:technical@kingspaninsulation.com.au) for further guidance.

# Product Details

## Product Description

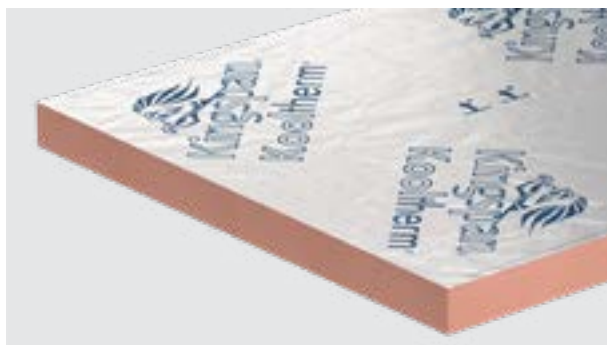


Figure 3. Kingspan Kooltherm® K8 Cavity Board.

Kingspan Kooltherm® K8 Cavity Board is a fibre-free rigid thermoset closed cell phenolic insulation core, sandwiched between two layers of reflective, composite foil autohesively bonded to the insulation core during manufacture. This reflective surface improves the thermal resistance of any cavity adjacent to the board.

Kingspan Kooltherm® K8 Cavity Board is manufactured with a blowing agent with zero Ozone Depletion Potential (ODP) and low Global Warming Potential (GWP).

Product Data	
Declared Thermal Conductivity ( $\lambda$ -value) AS/NZS 4859.1:2018 / ASTM C518-2017	0.022 W/m.K at 23°C (Insulant Thickness $\geq$ 45 mm) 0.023 W/m.K at 23°C (Insulant Thickness 25 - 44 mm)
Emittance (Foil Face) ASTM C1371:2015	E0.06
Product Dimensions	1200 mm x 514 mm (0.61 m <sup>2</sup> ) Other dimensions available upon enquiry. Minimum order quantities apply
Nominal Product Thickness	25, 40 mm Other thicknesses available upon enquiry. Minimum order quantities apply

## Product R-value

Nominal Product Thickness	Declared Product R-value at 23°C
25 mm	R1.10
40 mm	R1.75

## Specification Guide

### Kingspan Kooltherm® K8 Cavity Board

The cavity wall insulation Kingspan Kooltherm® K8 Cavity Board \_\_\_ mm thick, with a tested smoke obscuration of not more than 100 m<sup>2</sup>/kg, comprising a rigid thermoset phenolic insulation core faced on both sides with reflective, composite foil manufactured under a management system certified to ISO 9001:2015, ISO 14001:2015, ISO 45001:2018 and ISO 50001:2018 by Kingspan Insulation Pty Ltd and shall be installed in accordance with the instructions issued by them.

A Project Specific Warranty provided by Kingspan Insulation must be submitted.

## Standards and Approvals

Kingspan Kooltherm® K8 Cavity Board is manufactured to the highest standards and certified under the following management systems:

Standard	Management System
ISO 9001:2015	Quality Management
ISO 14001:2015	Environmental Management
ISO 45001:2018	Occupational Health and Safety
ISO 50001:2018	Energy Management

## Product Testing

Characteristic	Standard	Result
Compressive Stress (Insulant)	AS 2498.3:1993	Typically exceeds 100 kPa at 10% compression
Water Vapour Transmission	ASTM E96 Part B-2016	> 35 MN.s/g

## Fire Performance

Test	Test Method	Result
Early Fire Hazard Properties. (Ignitability, Flame spread, Heat release, Smoke release)	AS 1530.3:1999	Spread of Flame Index: 0 Smoke Development $\leq$ 3

## Durability

If correctly applied, Kingspan Kooltherm® products can be expected to have a long life of service.

Their durability depends on the supporting structure and the conditions of its use.

Kingspan Kooltherm® products are warranted for a period of 10 years for both residential and commercial installations.\*

\* Subject to the terms of the complete Kingspan Kooltherm® warranty document which is available upon request or downloadable from [www.kingspaninsulation.com.au](http://www.kingspaninsulation.com.au)

## Environmental Data

Aspect	Characteristic
Re-usability	Re-usable if removed with care (long term of service expected)
Water Use	No water used in Kingspan Insulation's manufacturing process
Blowing Agent	Manufactured with a blowing agent that has zero ODP and low GWP

# Installation Instructions

Installation should be in accordance with AS 3999:2015, Section 4 - Safety Requirements for Insulation Installation.

1. Construct the inner leaf to at least an appropriate level to allow installation of Kingspan Kooltherm® K8 Cavity Board to proceed.
2. Remove excess mortar and mortar droppings from exposed edges of any installed insulation boards.
3. Offer the Kingspan Kooltherm® K8 Cavity Board to the external face of the internal leaf and secure in place with a retaining disc/clip on each wall tie. Wall tie structure and positioning must be in accordance with the requirements of the NCC.
4. Ensure that each board is firmly abutted with adjacent boards and penetrations so that there are no gaps in the insulation layer.
5. Leave 100 mm clearance around any heat producing electrical fittings and 50 mm clearance around hot flues (refer to relevant manufacturers instructions).
6. The outer leaf is then built up to the level of the top of the boards and the process is repeated.
7. Ensure that a residual cavity of at least 40 mm is maintained in accordance with the moisture penetration provisions set out in the masonry structures standard AS 3700:2011 as called up in the NCC Volume 1, Section B1D4.

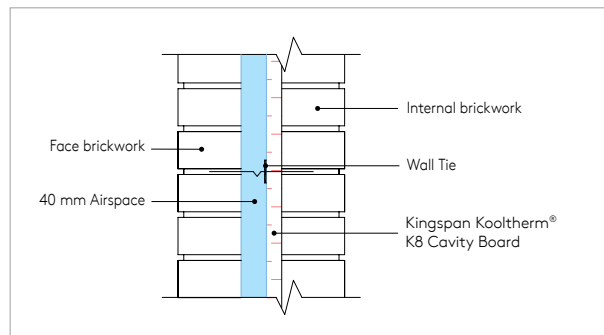


Figure 4. Side elevation – Double brick cavity wall with Kingspan Kooltherm® K8 Cavity Board.

---

# Other Information

---

## General

### Cutting

Cutting should be carried out either by using a fine toothed saw, or by scoring with a sharp knife, snapping the board over a straight edge and then cutting the facing on the other side. Ensure accurate trimming to achieve close-butting joints and continuity of insulation.

### Packaging

According to quantity, the boards are supplied in packs, labelled and shrink-wrapped in polythene.

## Handling and Storage

### Storage

The packaging of Kingspan Kooltherm® should not be considered adequate for long term outdoor protection. Ideally boards should be stored inside a building. If, however, outdoor storage cannot be avoided then the boards should be stacked clear of the ground and covered with an opaque polythene sheet or weatherproof tarpaulin. Boards that have been allowed to get wet should not be used.

### Resistance to Solvents

The insulation core is resistant to short-term contact with petrol and with most dilute acids, alkalis and mineral oils. However, it is recommended that any spills be cleaned off fully before the boards are installed. Ensure that safe methods of cleaning are used, as recommended by suppliers of the spilt liquid. The insulation core is not resistant to some solvent-based adhesive systems, particularly those containing methyl ethyl ketone. Adhesives containing such solvents should not be used in association with this product. Damaged boards or boards that have been in contact with harsh solvents or acids should not be used.

## Safety Information

Kingspan Insulation products are chemically inert and safe to use. A Product Safety Information sheet is available from Kingspan Insulation Pty Ltd.

Please note that the reflective surfaces on this product are designed to enhance their thermal performance. As such, they will reflect light as well as heat, including ultraviolet light. Therefore, if these boards are being installed during bright or sunny weather, it is advisable to wear UV protective sunglasses or goggles and if the skin is exposed for a significant period of time, to protect bare skin with a UV block sun cream.

**Foil facings are conductive to electricity – avoid contact with un-insulated electrical cables and fittings.**

Installation must be in accordance with AS 3999:2015 Bulk Thermal Insulation Installation and AS 3000:2018 Electrical Installations (Wiring Rules).

---

# Contact Details

---

## Australia

Kingspan Insulation Pty Ltd

T: 1300 247 235

E: [info@kingspaninsulation.com.au](mailto:info@kingspaninsulation.com.au)

[www.kingspaninsulation.com.au](http://www.kingspaninsulation.com.au)



---

© Kingspan, Kooltherm, KoolDuct, Air-Cell, GreenGuard, Thermakraft and the Lion Device are Registered Trademarks of the Kingspan Group plc in Australia and other countries. All rights reserved. © Kingspan Insulation Pty Ltd.

Kingspan Insulation Pty Ltd reserves the right to amend product specifications without prior notice. The information, technical details and fixing instructions etc. included in this literature are given in good faith and apply to uses described. Recommendations for use should be verified as to the suitability and compliance with actual requirements, specifications and any applicable laws and regulations. For other applications or conditions of use, Kingspan Insulation offers a Technical Advisory Service the advice of which should be sought for uses of Kingspan Insulation products that are not specifically described herein. Please check that your copy of the literature is current by contacting us or visiting <https://www.kingspan.com/au/en/products/insulation/wall-insulation/kooltherm-k8-cavity-board/>

