

Quarterly Training Seminar

Rest Areas

Thursday, February 18, 2021

Joseph Coughlin

Biren Patel

Agenda

- Project Budget
- Project Process
- Project Documentation
- Finale
 - Rest Area 16 Sparta
 - Truck Side Preliminary Plans

Project Budget

- Roadside Facilities has dollars for essential projects.
 - Our primary focus is on Health, Safety, and Reliability.
- The deadline for fiscal year 2021 Purchase Order (PO) requests is near the end of May.
- Continue identifying smaller projects.
- BHM Landscape Architects are identifying vegetation, tree removal, and tree planting projects for the near future.

Project Process

- Projects less than \$5,000 need only one quote.
 - Try to compartmentalize a project into smaller pieces.
- Projects less than \$10,000 need an attempt to get 3 quotes.
 - Needs Bureau Director approval.
 - Give all 3 contractors the same deadline to provide a quote... typically one week.
 - At the end of the deadline, only one reasonable bid is needed to continue moving forward with the Purchase Order (PO) process.
- Projects greater than \$10,000 need more detail and time.
 - Needs Administrator's Office (AO) approval.
- Projects greater than \$25,000 needs even more detail and time.
 - Needs Secretary's Office (SO) approval.

Project Documentation

The following information is needed to start a Purchase Order (PO)...

- Who was contacted?
- When were they contacted?
- How they were contacted (phone, e-mail, in-person, etc.)?
- Record the date the quote was received.

- Request and submit quote documentation.

Work Center Staff

Thank You!

Thank You for Helping Identify the Needs and
Assisting with Gathering Bids for Projects!

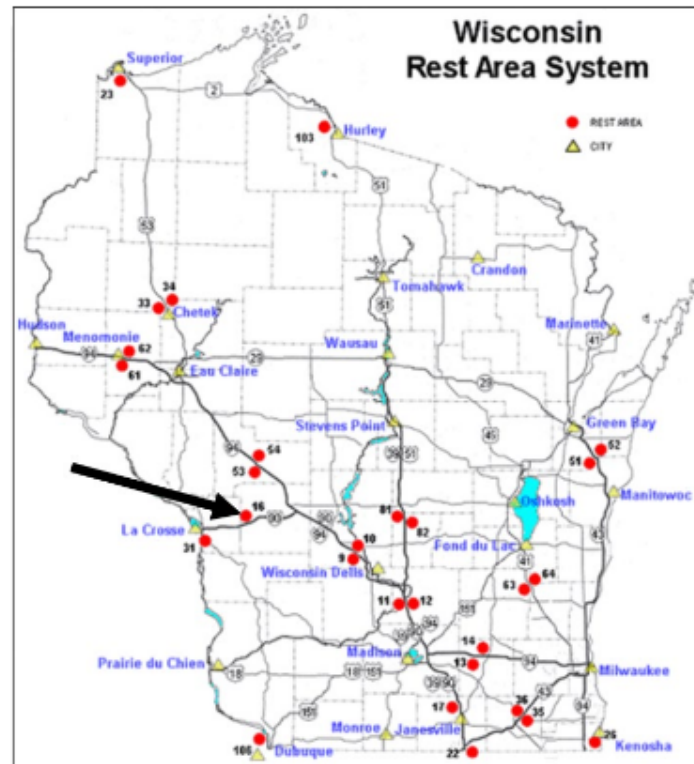
Rest Area 16 Sparta

- Built in 1969
 - 52-years new this year
- Most recent Car Side and plaza updates in 2020
 - Funding came from a Discretionary Maintenance Agreement (DMA)
 - Total of \$165,000
- Preliminary Truck Side Plans completed
 - Concrete Pavement Repair and Asphalt Shoulders
 - Concrete Sidewalk between the car and truck parking lots
 - ADA Compliant Sidewalk with additional lighting
 - ADA Compliant Steps
 - Preliminary cost \$250,000
 - Tentative Staging Plan and Searching for funding

Rest Area #16 Repairs

Interstate 90 Westbound

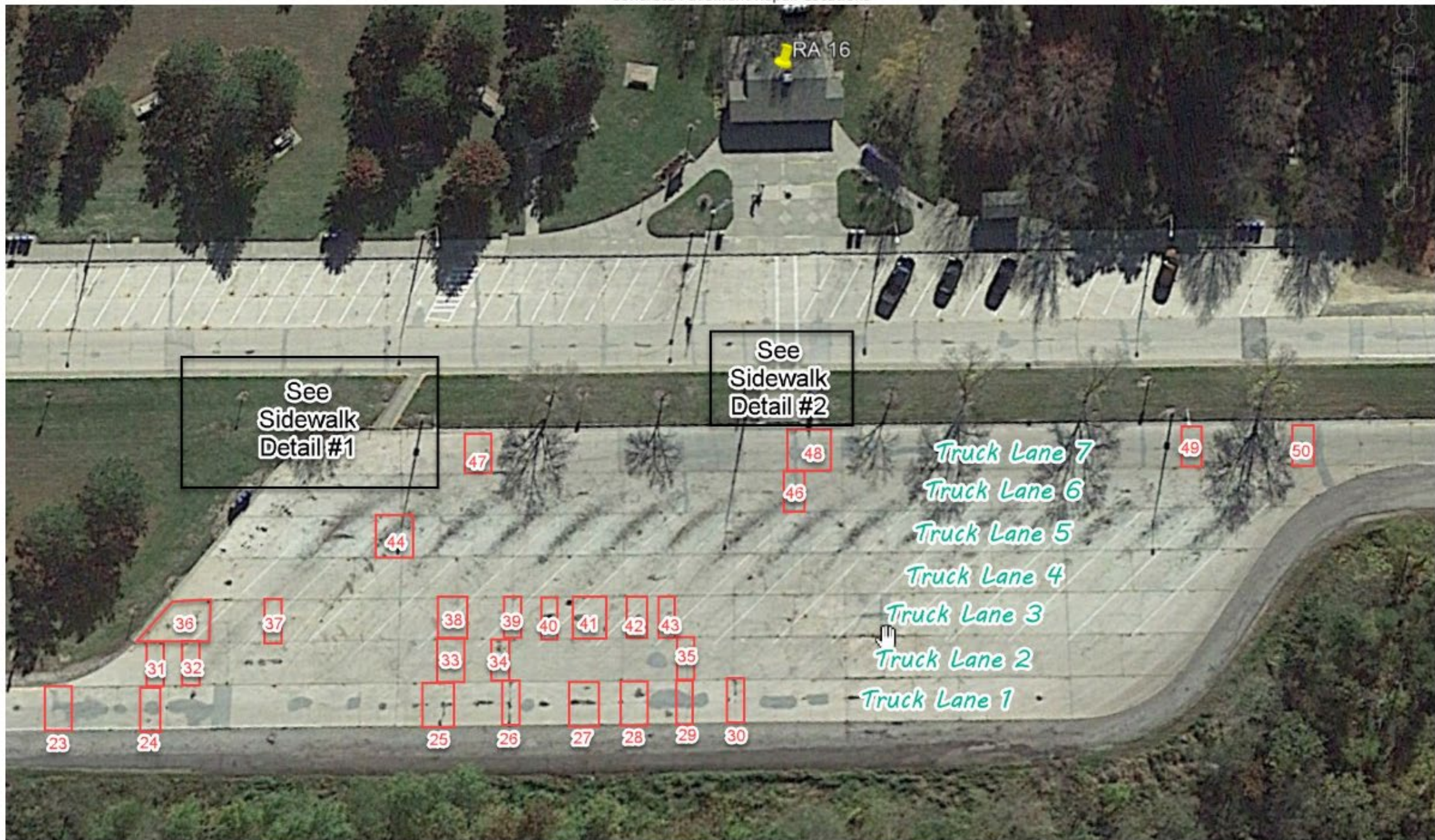
Mile Marker 21 (near Sparta)



Concrete Pavement Repair Locations

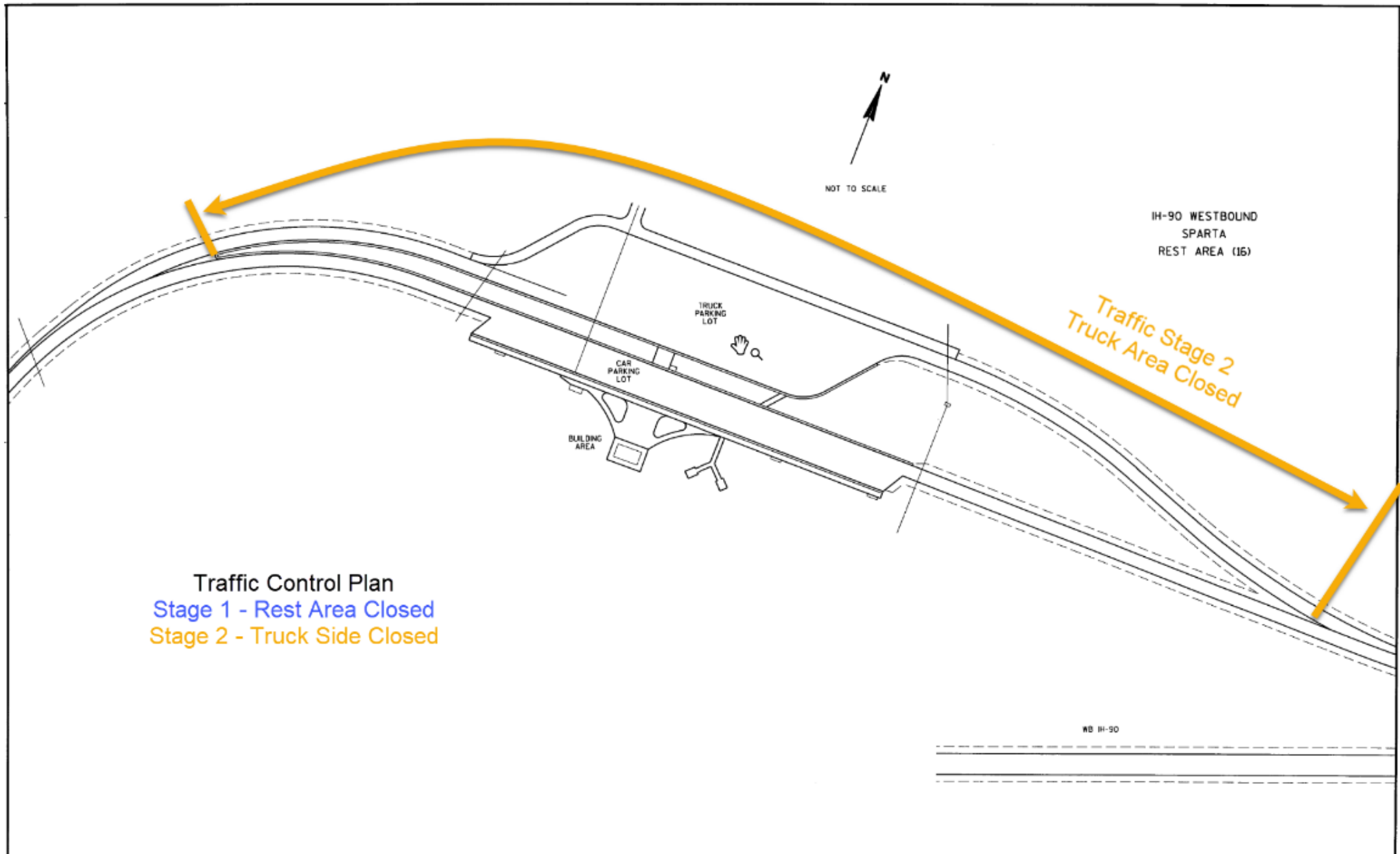


Concrete Pavement Repair Locations



Concrete Pavement Repair Locations





Traffic Control Plan
Stage 1 - Rest Area Closed
Stage 2 - Truck Side Closed

Removals

Removing Concrete Sidewalk

(trash can pad = 30 sf)

(median crosswalk = 360 sf)

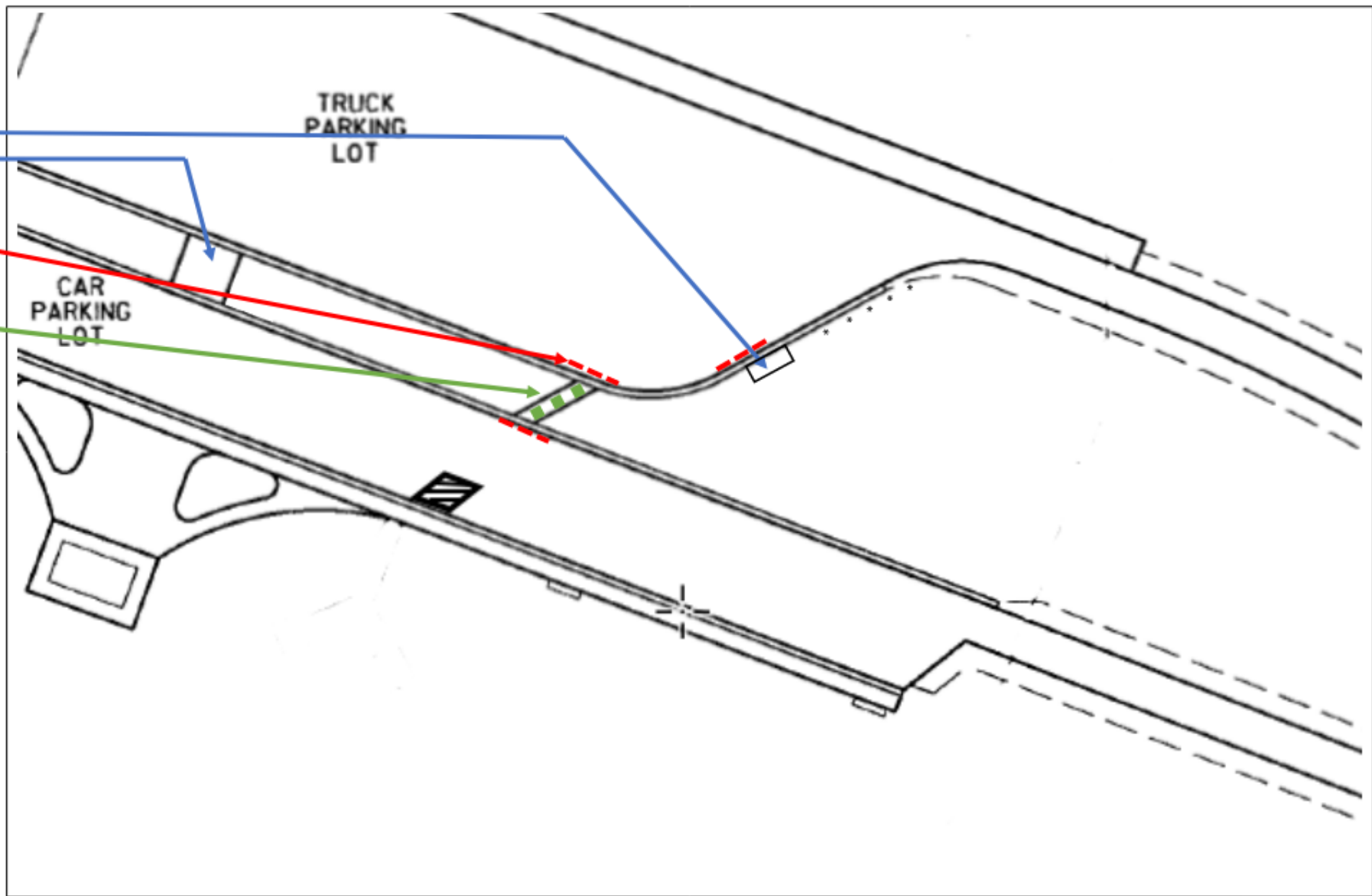
Removing Curb & Gutter

(3 locations = 43 linear feet)

Removing concrete flume

(120 sf)

Remove delineator posts (9) = *

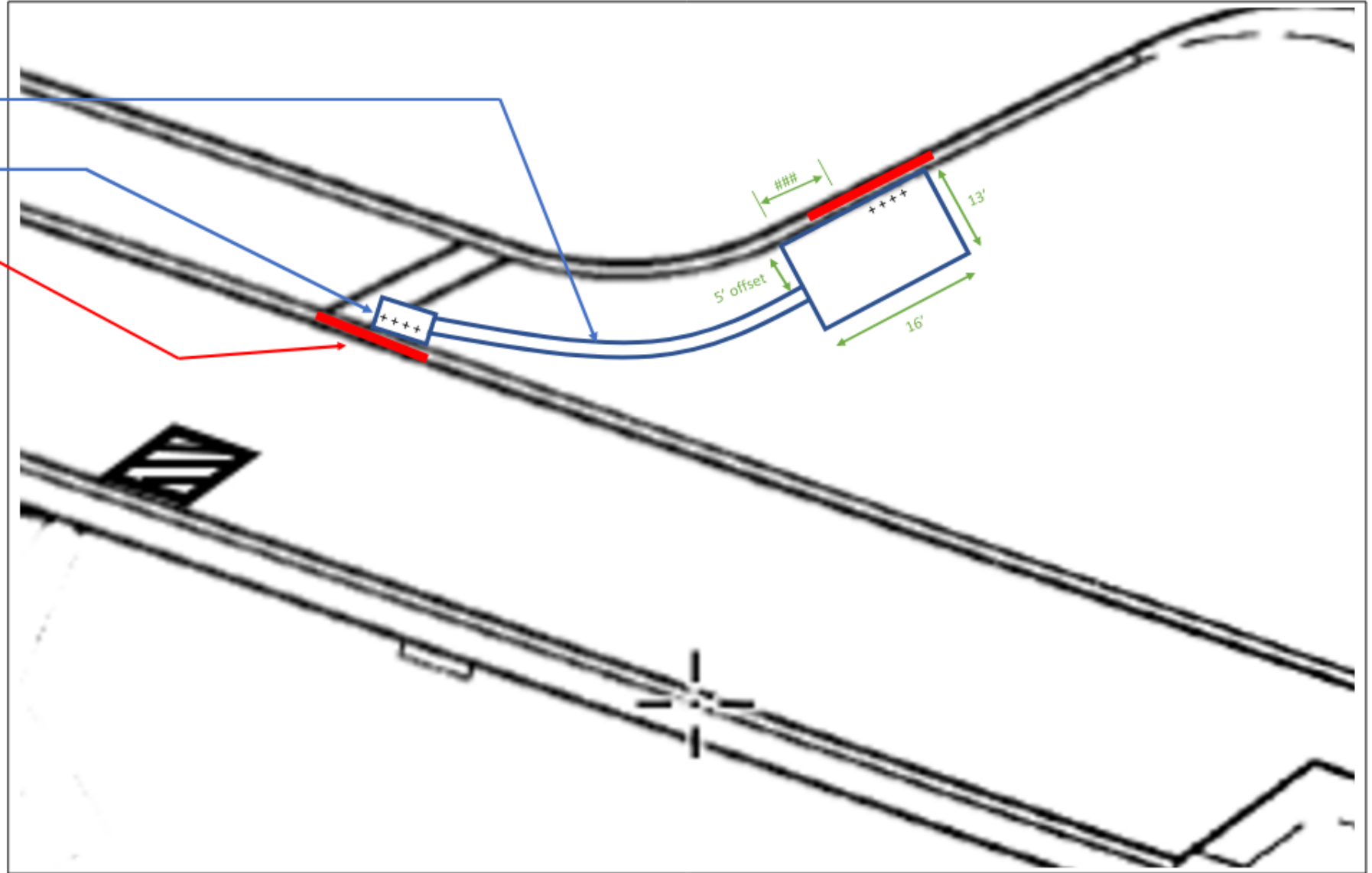


Concrete Sidewalk – Detail #1

- 5' Concrete Sidewalk (50 linear feet)
- 2' x 5' Detectable Warning Fields (2) + + + +
- 6' x 6' Level Landing Pad (36 sf)
- 13' x 16' Level Landing Pad (208 sf)
- 30" Concrete Curb & Gutter (slope to match DWF)
(2 locations – 18 linear feet)

Notes:

1. Level Landing Pads are sloped 1.5 - 2% except in the area near the Detectable Warning Fields (DWF).
2. ### - 8' flat area next to DWF for trash cans.



Concrete Sidewalk – Detail #2

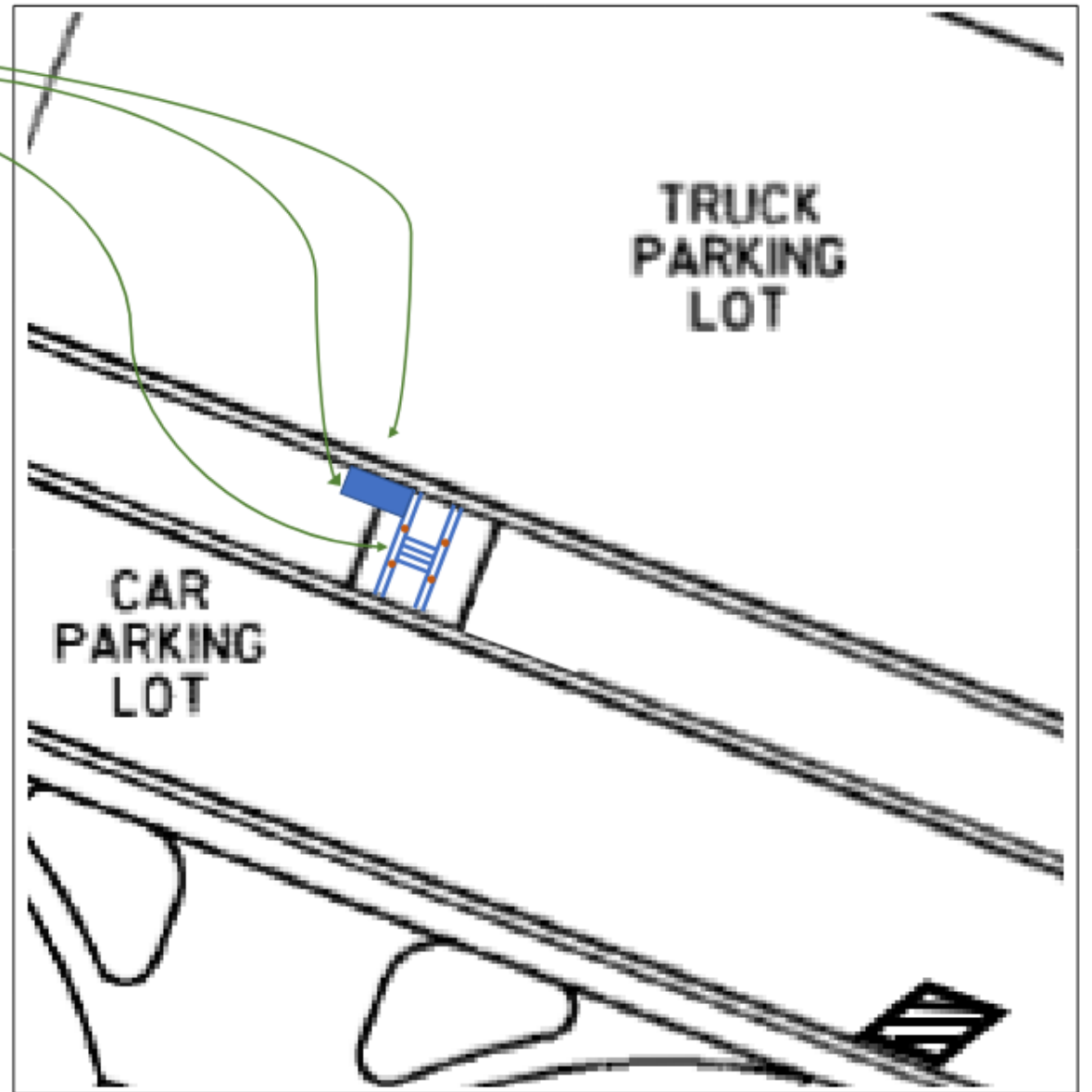
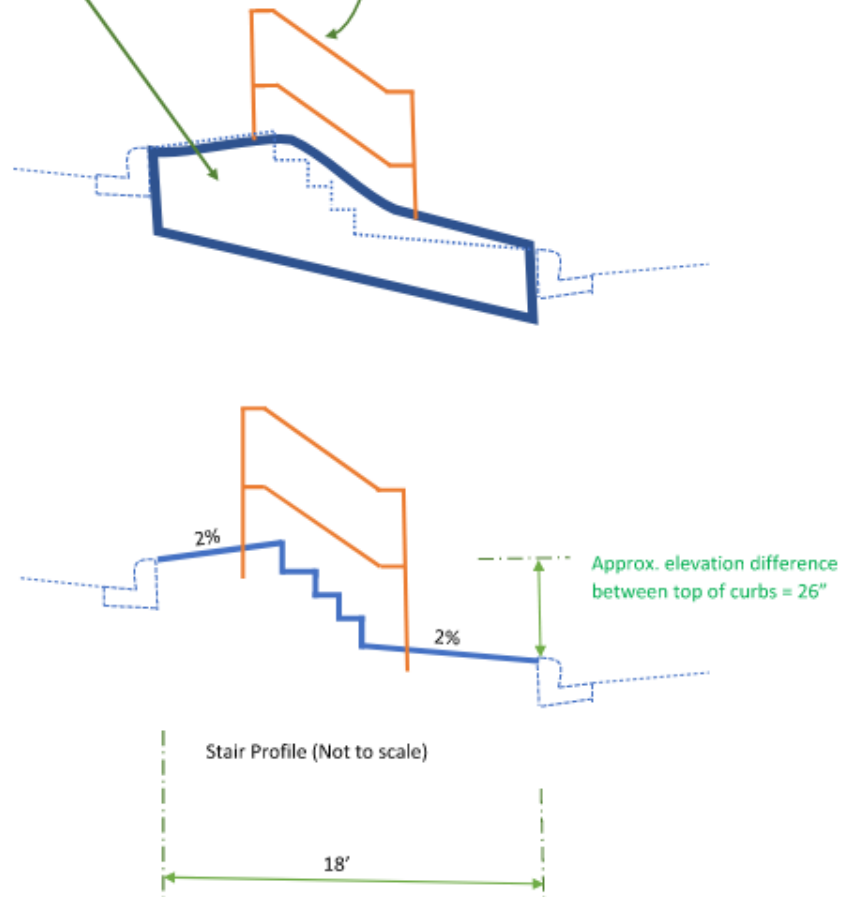
30" Concrete Curb & Gutter (repair section – 12')

5" Concrete Sidewalk / Median Crosswalk = 8' x 18' (144 s.f.) + Trash Can Cluster Bumpout = 4' x 10' (40 s.f.)

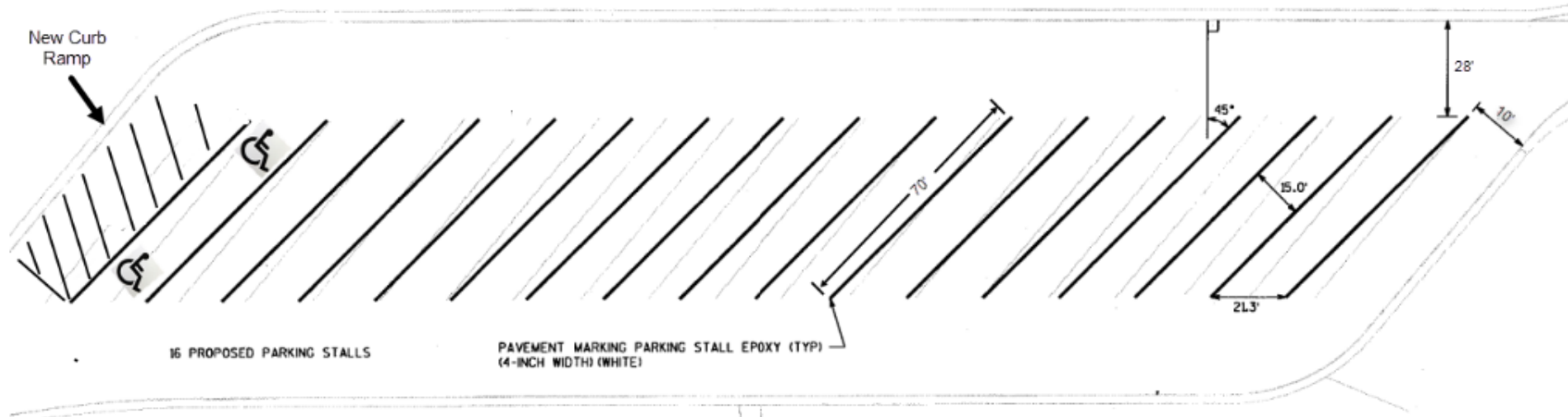
Concrete Steps (Follow ADA Section 504 Stairways, sidewalk slopes away from steps in both directions)

Pipe Hand Railing (Follow ADA Section 505 Handrails)

12" wide Curb wall



Pavement Marking Details



A. Pavement Marking, 4" Epoxy (17 lines by 70' long)

OR

B. Pavement Marking, Grooved High Performance Contrast Tape 4" (17 lines by 70' long)

C. Pavement Marking, 8" Epoxy (angled lines in Handicap zone – 200')

D. Pavement Marking, Stopline, Epoxy, 18" (16 lines by 15' each)

E. Pavement Marking, Handicap Symbol, Epoxy (2 symbols in same truck stall)

The End