

DRIVE LIKE YOU WORK HERE

2019 WISCONSIN WORK ZONE FACTS



2,677

the average number of work zone crashes per year

Over the past five years, Wisconsin work zones saw

13,000
crashes

5,200
injuries

50
deaths



CONSTRUCTION SEASON saw **9** **nine crashes EVERY DAY**



What **YOU** can do to keep work zones safe for everyone

Move over, slow down.
Pay attention. Be patient.
Wear a seatbelt.



KEEP A SAFE DISTANCE

4,100 WORK ZONE
CRASHES IN WISCONSIN
FROM TAILGATING



WISCONSIN
TRAFFIC
MANAGEMENT
CENTER



2019 Wisconsin Work Zone Facts based on the last five years of data.

15C. MARKING AND SIGNING	
+2	15C2 Barricades and Signs for Mainline, Detour, On Ramp, Off Restriction
	sheet A Barricades and Signs for Mainline Closure
	sheet B Barricades and Signs for Various Mainline
	sheet C Detour Signing for Mainline Closures
	sheet D Traffic Control, Guidance Signing for On-Ramp
	sheet E Traffic Control, Guidance Signing for Off-Ramp
	sheet F Traffic Control, Advanced Width Restriction
+1	15C3 Barricades and Signs for Sideroad Closures
+3	15C4 Traffic Control, Advance Warning Signs 40 M.P.H. or On
+2	15C5 Traffic Control, Advance Warning Signs 40 M.P.H. or Less
+3	15C6 Signing and Marking for Two Lane Bridges
+13	15C7 Pavement Marking Words, Symbols and Arrows
	a b c d e
+20	15C8 Pavement Marking, Mainline and Turn Lanes
	sheet A Longitudinal Marking (Mainline)
	sheet B Pavement Marking (Turn Lanes)
	sheet C Pavement Marking (Turn Lanes)
+11	15C9 Signing and Pavement Marking Railroad Grade Crossing
	sheet A Signing and Pavement Marking Details for
	sheet B Railroad Truck Stopping Lane Pavement
+7	15C11 Channelizing Devices
	sheet A Channelizing Devices - Flexible Tubular &
	sheet B Channelizing Devices - Drums, Cones, B&
+7	15C12 Traffic Control for Lane Closure with Flagging Operation
+3	15C14 Aerial Enforcement Bars Pavement Marking Details
+4	15C18 Median Island Marking
+1	15C19 Moving Pavement Marking Operations
	sheet A Moving Pavement Marking Operation - T&
	sheet B Moving Pavement Marking Operation - M
	sheet C Moving Pavement Marking Operation - M
+2	15C20 Yield Markings
+10	15C21 Signing and Marking for Two Lane to Four Lane Divided
+4	15C26 End-of-Roadway Signing
+2	15C27 Double Arrow Warning Sign Placement and Pavement M
	a b
+7	15C29 Bicycle Lane Pavement Marking
	sheet A Bicycle Lane Marking
	sheet B Bicycle Lane - Pavement Marking for Sha
+1	15C31 Pavement Marking (Ramps and Gores)
	sheet A Pavement Marking (Ramps and Gores)

+2	15O27 Traffic Control, Shoulder Closure on Divided Roadway, Speeds Greater than 40 M.P.H.
+4	15O28 Traffic Control, Work on Shoulder or Parking Lane, Undivided Roadway
+8	15O29 Traffic Control, Vehicle Entrance/Exit or Haul Road
+6	15O30 Traffic Control, Pedestrian Accommodation
	sheet A Traffic Control, Pedestrian Accommodation
	sheet B Traffic Control, Temporary ADA Compliant Pedestrian Accommodation
	sheet C Traffic Control, Temporary Pedestrian Accommodation
+3	15O31 Traffic Control, Temporary Bypass Roadway
+2	15O32 Traffic Control, One Lane Road Stop Condition
+6	15O33 Traffic Control, One Lane Road with Temporary Signals
+2	15O35 Ramp Gate
	a b c
+7	15O36 Barricade Road
+3	15O37 Traffic Control, Flagging Operation, Roundabout
+2	15O38 Temporary Traffic Control, Sign Mounting
	a b
+2	15O39 Traffic Control for Drop-off Signing
+1	15O40 Traffic Control, Lane Shift, Multi-Lane Divided or One-Way Road
+1	15O41 Traffic Control, Lane Shift, Multi-lane Divided
+1	15O42 Traffic Control, Two Lane Full Freeway Closure
+1	15O43 Traffic Control, Short Duration Mobile Operations
+2	15O44 Traffic Control, Signing on Roadways with Milled Surfaces
+7	15O45 Traffic Control, Signing on Roadways with Loose Gravel
+1	15O46 Traffic Control, One-Way Signing
+1	15O47 Traffic Control, Ingress/Egress
	sheet A Ingress/Egress With Barrier
	sheet B Ingress/Egress Without Barrier

16. SURVEYING

16A. MONUMENTS

+7	16A1 Landmark Reference Monuments and Covers
----	---

	ement Marking Major Split Freeway to Freeway
	ement Marking for Parallel On-Ramp and Parallel Off-Ramp
	eswalk Pavement Marking
	on for Temporary Raised Pavement Markers, Type II
	ement Marking (Intersections)
	ement Marking (Climbing and Passing Lanes)
	ement Marking (Climbing and Passing Lanes)
	ing
	DL
	ne Closure, Speeds Greater than 40 M.P.H. with Barrier
	mp Construction Staging
	ngle Lane Crossover Entrance with Barrier
	o Lane Two Way Operation
	mporary Exit Ramp Crossover
	mporary Entrance Ramp Crossover
	ngle Lane Crossover Exit
	ngle Lane Crossover Exit with Barrier
	ngle Lane Crossover
	ffic Control, Lane Closure
	ffic Control, Lane Closure, Speed Reduction
	ffic Control, Lane Closure, Dynamic Lane Merge System 2 Lane
	ffic Control, Lane Closure, Basic Traffic Queue Warning System
	ency Pullouts
	o Lane Closure on Freeway or Expressway, Short-Term (Less than 24 Hours)
	mp within Lane Closure
	ffic Control, Parallel Entrance Ramp within Right Lane Closure
	ffic Control, Entrance Ramp within Left Lane Closure
	ffic Control, Tapered Entrance Ramp within Right Lane Closure
	ffic Control, Tapered Entrance Ramp within Left Lane Closure
	ffic Control, Parallel Exit Ramp within Lane Closure
	ff Ramp Closure
	ngle Lane Closure, Non-Freeway/Expressway
	ffic Control, Single Lane Closure, Divided Non-Freeway/Expressway
	ffic Control, Single Right Lane Closure Undivided Non-Freeway/Expressway
	ffic Control, Single Left Lane Closure Undivided Non-Freeway/Expressway
	ersection within Single Lane Closure
	ffic Control, Intersection within Single Right Lane Closure
	ffic Control, Intersection within Single Left Lane Closure
	o Lane Closure, Non-Freeway/Expressway
	ersection within Two Lane Closure
	ffic Control, Intersection within Two Right Lane Closure
	ffic Control, Intersection within Two Left Lane Closure

SDD 15D12-a Traffic Control, Lane Closure

GENERAL NOTES

THE EXACT NUMBER, LOCATION AND SPACING OF ALL SIGNS AND DEVICES SHALL BE ADJUSTED TO FIT FIELD CONDITIONS AS APPROVED BY THE ENGINEER.

THE SPACING BETWEEN SIGNS SHOULD BE ADJUSTED TO NOT CONFLICT WITH AND TO PROVIDE A MINIMUM OF 200 FEET (200 FEET DESIRABLE) CLEARANCE TO EXISTING SIGNS.

THIS LANE CLOSURE IS TYPICAL FOR CLOSING RIGHT LANE - REVERSE FOR CLOSING LEFT LANE.

ALL SIGNS ARE 48" x 48" UNLESS OTHERWISE NOTED.

*W2 IS THE SAME AS *W1 EXCEPT THE BACKGROUND IS ORANGE.

ANY SIGNS TEMPORARY OR EXISTING WHICH CONFLICT WITH TRAFFIC CONTROL "IN USE" SHALL BE REMOVED OR COVERED AS NEEDED OR AS APPROVED BY THE ENGINEER.

FOR A LANE CLOSURE THAT IS IN PLACE LESS THAN 7 CONTINUOUS DAYS AND NIGHTS, THE ADVANCED WARNING SIGNS MAY BE MOUNTED ON PORTABLE SUPPORTS.

REMOVE PAVEMENT MARKINGS IF LANE CLOSURE IS TO BE IN PLACE 4 OR MORE CONTINUOUS DAYS AND NIGHTS.

IF THE HORIZONTAL ALIGNMENT IS SUCH THAT A CURVE MAY REQUIRE ADDITIONAL DELINEATION, THE DEVICE SPACING MAY BE DECREASED TO 50 FEET.

WARNING LIGHTS ARE NOT REQUIRED IF THE LANE CLOSURE IS A DAYTIME ONLY OPERATION.

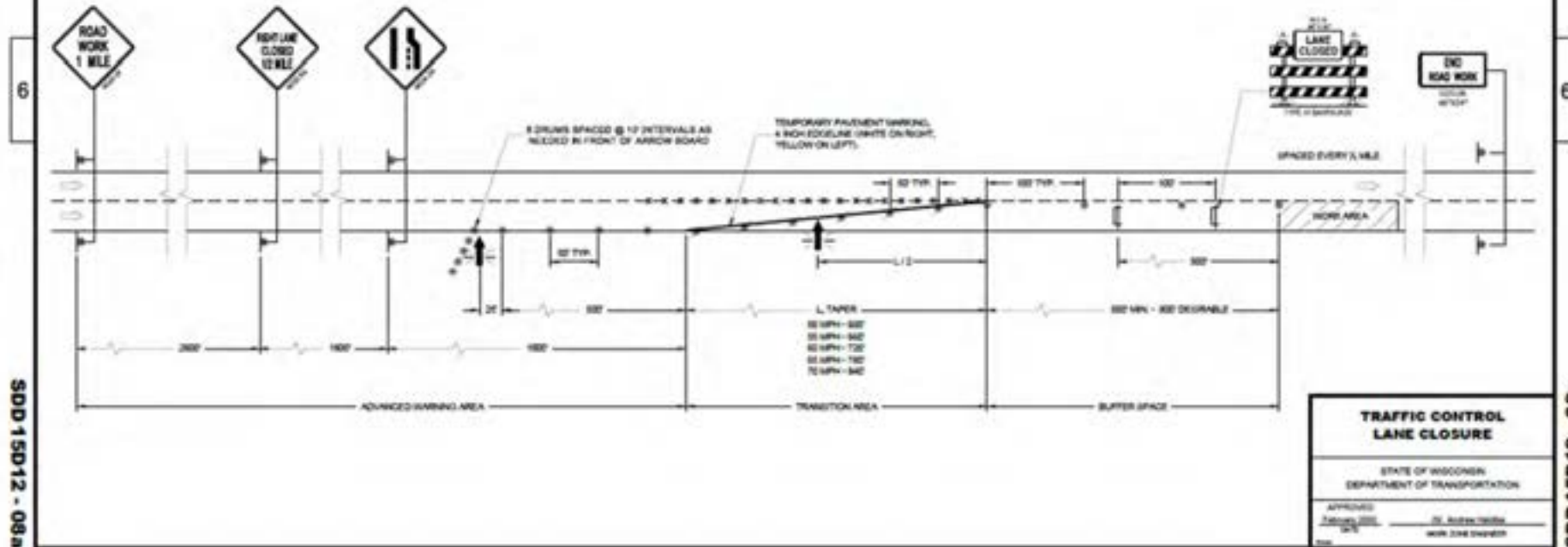
ADJUSTMENTS IN BUFFER SPACE NEED TO BE INCORPORATED WHEN THE LANE CLOSURE OCCURS.

NEAR AN INTERCHANGE, EXIT OR ENTRANCE RAMP OR INTERSECTION, THE LANE CLOSURE MUST TAKE PLACE FAR ENOUGH IN ADVANCE OF AN EXIT OR ENTRANCE RAMP TO STILL ALLOW FOR ADEQUATE BUFFER SPACE. THE MINIMUM LENGTH OF THE BUFFER SPACE BEFORE AN EXIT RAMP SHOULD BE ONE HALF THE LENGTH OF THE TRANSITION AREA. THE ENTRANCE RAMP SHOULD BE FOLLOWED BY THE ORIGINAL BUFFER SPACE LENGTH OF 300 FEET DESIRABLE PRIOR TO ANOTHER TRAFFIC CONTROL CHANGE SUCH AS A CROSSOVER INTERCHANGE.

CONSIDER ROADWAY GEOMETRIC WHEN LOCATING SIGNS AND ARROW BOARD SO THE DRIVER HAS A CLEAR VIEW OF THE ARROW BOARD AND LANE CLOSURE DRUMS.

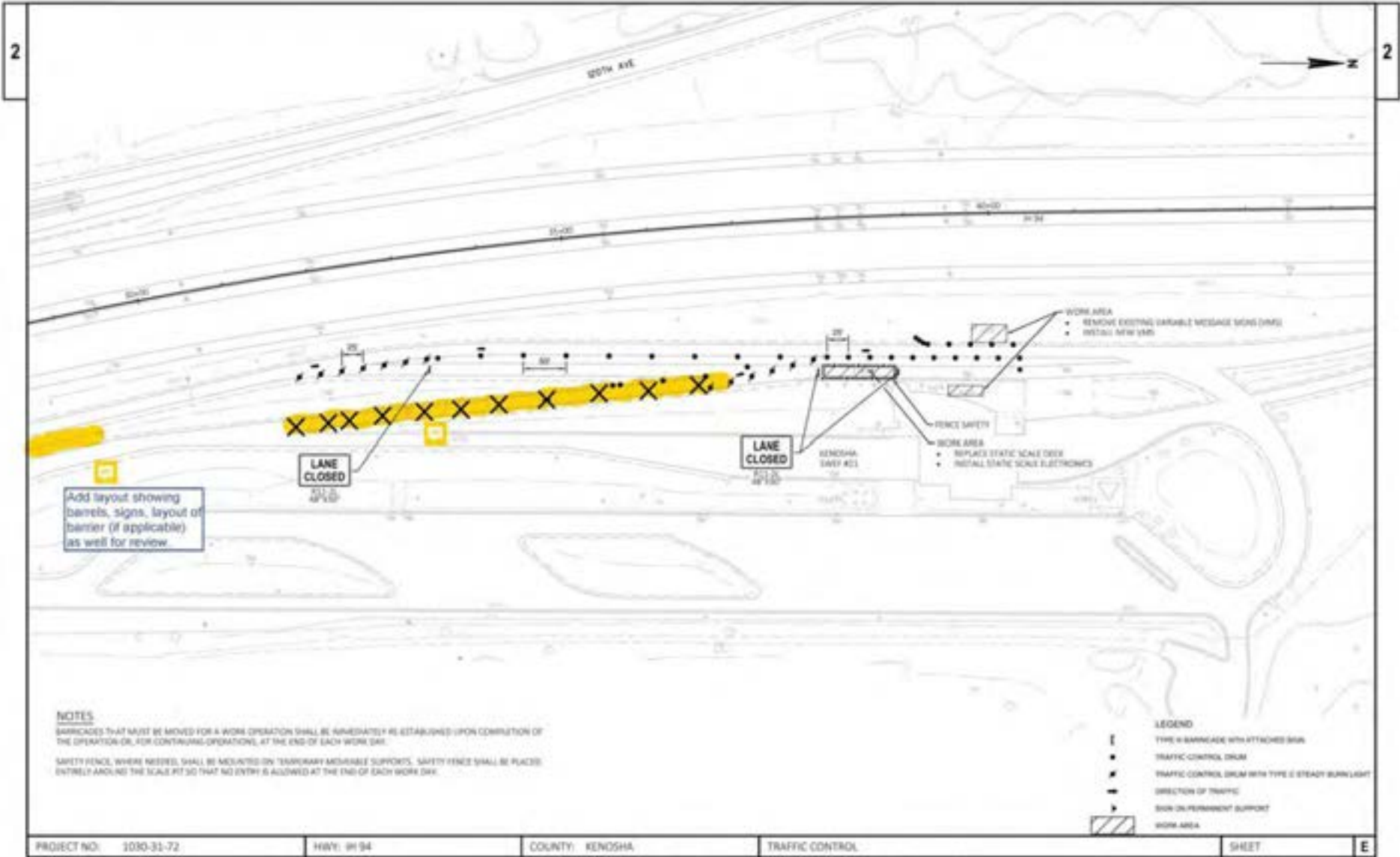
LEGEND

-  SIGN ON PERMANENT SUPPORT
-  TRAFFIC CONTROL DRUM
-  TRAFFIC CONTROL DRUM WITH TYPE "C" STEADY BURN LIGHT
-  TYPE II BARRICADE WITH ATTACHED SIGN
-  TYPE 1W WARNING LIGHT (FLASHING)
-  REMOVAL PAVEMENT MARKINGS
-  DIRECTION OF TRAFFIC
-  WORK AREA
-  FLASHING ARROW BOARD



SDD 15D12 - 08a

SDD 15D12 - 08a



Add layout showing barrels, signs, layout of barrier (if applicable) as well for review.

NOTES
 BARRICADES THAT MUST BE MOVED FOR A WORK OPERATION SHALL BE IMMEDIATELY RE-ESTABLISHED UPON COMPLETION OF THE OPERATION OR FOR CONTINUING OPERATIONS AT THE END OF EACH WORK DAY.
 SAFETY FENCE, WHERE NEEDED, SHALL BE MOUNTED ON TEMPORARY MOVABLE SUPPORTS. SAFETY FENCE SHALL BE PLACED ENTIRELY AROUND THE SCALE PIT SO THAT NO ENTRY IS ALLOWED AT THE END OF EACH WORK DAY.

- LEGEND**
- TYPE II BARRICADE WITH ATTACHED DRUM
 - TRAFFIC CONTROL DRUM
 - TRAFFIC CONTROL DRUM WITH TYPE II STEADY BURN LIGHT
 - DIRECTION OF TRAFFIC
 - ▬ SIGN OR PERMITS SUPPORT
 - ▨ WORK AREA

PROJECT NO: 1030-31-72	HWY: 94 S4	COUNTY: KENOSHA	TRAFFIC CONTROL	SHEET	E
------------------------	------------	-----------------	-----------------	-------	---



 SDD 15D12-a Traffic Control, Lane Closure

GENERAL NOTES

THE EXACT NUMBER, LOCATION AND SPACING OF ALL SIGNS AND DEVICES SHALL BE ADJUSTED TO FIT FIELD CONDITIONS AS APPROVED BY THE ENGINEER.

THE SPACING BETWEEN SIGNS SHOULD BE ADJUSTED TO NOT CONFLICT WITH AND TO PROVIDE A MINIMUM OF 200 FEET (SEE FEET DESIRABLE) CLEARANCE TO EXISTING SIGNS.

THIS LANE CLOSURE IS TYPICAL FOR CLOSING RIGHT LANE - REVERSE FOR CLOSING LEFT LANE.

ALL SIGNS ARE 48" x 48" UNLESS OTHERWISE NOTED.

*W2P IS THE SAME AS *W EXCEPT THE BACKGROUND IS ORANGE.

ANY SIGNS TEMPORARY OR EXISTING WHICH CONFLICT WITH TRAFFIC CONTROL "IN USE" SHALL BE REMOVED OR COVERED AS NEEDED OR AS APPROVED BY THE ENGINEER.

FOR A LANE CLOSURE THAT IS IN PLACE LESS THAN 7 CONTINUOUS DAYS AND NIGHTS, THE ADVANCED WARNING SIGNS MAY BE MOUNTED ON PORTABLE SUPPORTS.

REMOVE PAVEMENT MARKINGS IF LANE CLOSURE IS TO BE IN PLACE 4 OR MORE CONTINUOUS DAYS AND NIGHTS.

IF THE HORIZONTAL ALIGNMENT IS SUCH THAT A CURVE MAY REQUIRE ADDITIONAL DELINEATION, THE DEVICE SPACING MAY BE DECREASED TO 50 FEET.

WARNING LIGHTS ARE NOT REQUIRED IF THE LANE CLOSURE IS A DAYTIME ONLY OPERATION.

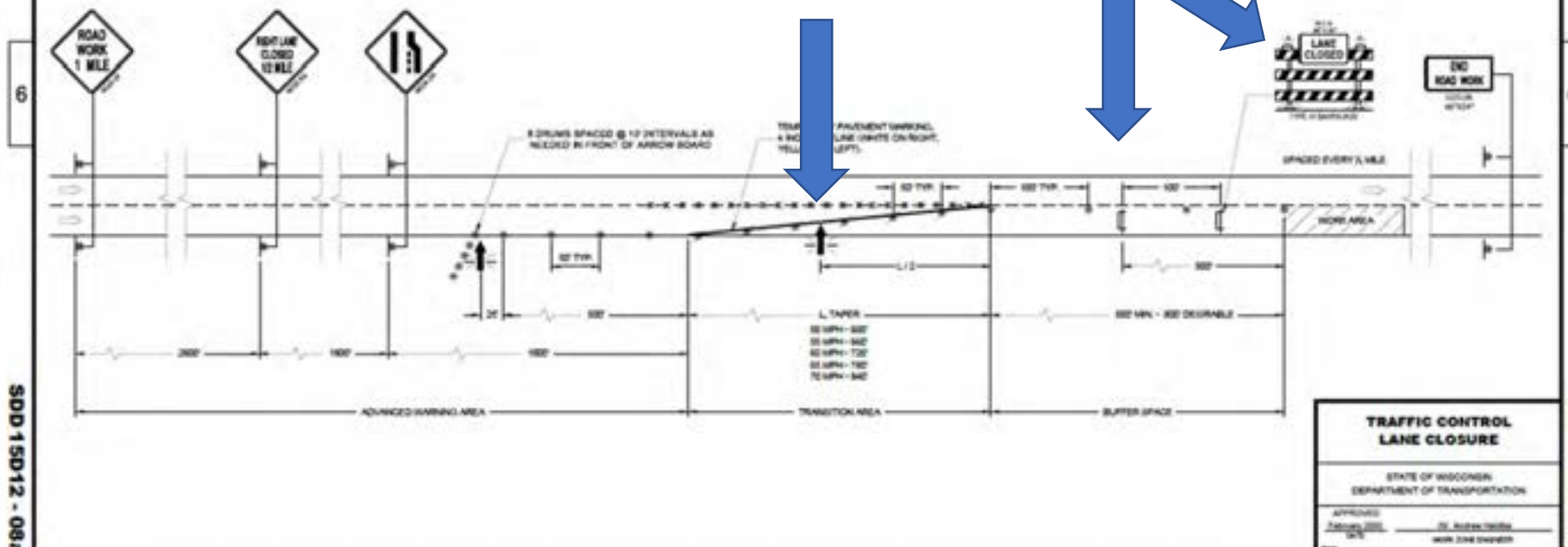
ADJUSTMENTS IN BUFFER SPACE NEED TO BE INCORPORATED WHEN THE LANE CLOSURE OCCURS.

NEAR AN INTERCHANGE, EXIT OR ENTRANCE RAMP OR INTERSECTION, THE LANE CLOSURE MUST TAKE PLACE FAR ENOUGH IN ADVANCE OF AN EXIT OR ENTRANCE RAMP TO STILL ALLOW FOR ADEQUATE BUFFER SPACE. THE MINIMUM LENGTH OF THE BUFFER SPACE BEFORE AN EXIT RAMP SHOULD BE ONE HALF THE LENGTH OF THE TRANSITION AREA. THE ENTRANCE RAMP SHOULD BE FOLLOWED BY THE ORIGINAL BUFFER SPACE LENGTH OF 300 FEET DESIRABLE PRIOR TO ANOTHER TRAFFIC CONTROL CHANGE SUCH AS A CROSSOVER UNDERPASS.

CONSIDER ROADWAY GEOMETRICS WHEN LOCATING SIGNS AND ARROW BOARD SO THE DRIVER HAS A CLEAR VIEW OF THE ARROW BOARD AND LANE CLOSURE DRUMS.

LEGEND

-  SIGN ON PERMANENT SUPPORT
-  TRAFFIC CONTROL DRUM
-  TRAFFIC CONTROL DRUM WITH TYPE 'C' STEADY BURN LIGHT
-  TYPE 'B' BARRICADE WITH ATTACHED SIGN
-  TYPE 'W' WARNING LIGHT (FLASHING)
-  REMOVAL PAVEMENT MARKINGS
-  DIRECTION OF TRAFFIC
-  WORK AREA
-  FLASHING ARROW BOARD



SDD 15D12 - 06a

**TRAFFIC CONTROL
LANE CLOSURE**

STATE OF WISCONSIN
DEPARTMENT OF TRANSPORTATION

APPROVED:  DATE: 

BY:  DATE: 

WORK DATE: 

SDD 15D12 - 08a



