

Safety Weight Enforcement Facilities



Annual Report



Fiscal Year 2012

(July 1, 2011– June 30, 2012)



Blank Page

Safety Weight Enforcement Facility Maintenance Program

Introduction



SWEFs received janitorial, landscape and maintenance services from an unchanged group of service providers in fiscal year 2012. Several improvements were made to facilities over the course of the year, as noted in the “Project Management” section. However, no major construction projects were executed. Overall, the program functioned as expected and performance outcomes met standards. A number of service providers were recognized for particularly good inspections during the course of the year. RFW was involved in several construction meetings held by WisDOT regarding the planning for the new SWEF to replace the existing West Salem facility which will be the next major construction project in the program.

RFW’s responsibilities under the SWEFM Program include the following:

- Contract Development and Compliance
- Annual Work Program Development and Implementation
- Quality Assurance of Custodial, Maintenance and Landscape Services
- Accounting and Record Keeping
- Service Provider Technical Support
- Project Management
- Communication and Recommendations Which Support Facility Management

This report summarizes the program activities in the above categories during the State's Fiscal Year 2012 (July 1, 2011 - June 30, 2012).

Contract Development and Compliance

RFW maintains janitorial, maintenance, and landscape specifications for all the SWEF sites included in the program. The specifications are reviewed on an annual basis and any discrepancy between existing work specifications and the actual work being performed is noted and discussed with both WisDOT and the contracting service provider. RFW negotiates contract terms, prepares and sends contracts to service providers, on behalf of WisDOT, for signature and review. RFW also coordinates with WisDOT staff to ensure the prompt and accurate delivery of contract purchase orders to service providers.

For the Fiscal Year 2012 period, the program budget was maintained at status quo levels. This budget threshold was communicated by RFW to the ten service providers. After negotiation, the budget for the Newton SWEF was adjusted to account for actual expenditures experienced by the service provider. A net change of \$781.00 was proposed on behalf of the service provider and approved by WisDOT.



Annual Work Program

RFW develops the Annual Work Program for the SWEFM Program sites by working with WisDOT Bureaus and service providers. The grand total for budgeted costs of the SWEFM Program came in below those of FY 2011 by -0.28%. The Minor Repairs expenses performed by Professional Service Vendors increased in the FY 2012 period for a total of \$3,587.50 or 21.70%. The Janitorial and Mowing line item expenses that were renegotiated for the Newton SWEF yielded a savings of \$781.00 or 0.55%. A change order for Minor Repairs by Service Provider was implemented in the amount of \$3,000.00 for the Beloit SWEF to account for unforeseen expenses primarily related to electrical and plumbing work. The remaining SWEF facilities maintained status quo funding levels for the FY 2012 period.

The Annual Work Program Summary for FY 2012 (Table 1) compares the budgeted amount for FY 2012 and FY 2011 for each budget category.

Table 1: FY 2012 and FY 2011 Budgeted Annual Work Program Comparison				
	FY 2012	FY 2011	Difference	Percent
Janitorial	\$112,760.32	\$111,720.32	\$1,040.00	100.93%
Mowing	\$22,765.80	\$23,024.80	(\$259.00)	98.88%
Snow Removal	\$7,681.50	\$7,681.50	\$0.00	100.00%
Janitorial, Mowing & Snow Removal Total	\$143,207.62	\$142,426.62	\$781.00	100.55%
Tree-Landscape Maintenance	\$4,526.68	\$4,526.68	\$0.00	100.00%
Minor Repairs (by Service Provider)	\$46,817.49	\$43,817.49	\$3,000.00	106.85%
Minor Repairs (by Professional Service Vendor-WisDOT Direct PO)	\$20,123.50	\$16,536.00	\$3,587.50	121.70%
Landscaping & Minor Repairs Total	\$71,467.67	\$64,880.17	\$6,587.50	110.15%
Grand Total	\$214,675.29	\$207,306.79	\$7,368.50	103.55%

RFW works with each Program service provider and the Department to review the work specification to ensure necessary services are performed to meet the needs of SWEF building occupants. Contract language is drafted by RFW and reviewed by WisDOT for accuracy.



A detailed Annual Work Program is created for each individual site. This program provides the guidelines for the routine janitorial, mowing, snow removal (if applicable), and landscape and minor repair activities. The Annual Work Program is a detailed document, which consists of work specifications, budget estimates, and cost analyses for each SWEF in the Program. Contact RFW to request a copy of the complete Fiscal Year 2012 actual to budget information for each individual site.

Quality Assurance

RFW performs “Random” and “Announced” inspections regularly to assure each facility meets or exceeds established standards. RFW reports the outcome of these inspections to WisDOT and State Patrol. Any noted deficiencies are reviewed with the service provider so to resolve issues promptly.

During FY 2012, 94 Random inspections were performed by RFW field staff. See Table 2 for a comparison of percentages that standards were met between FY 2012 and FY 2011.

A number of site walk-throughs including service providers and RFW personnel were performed to assure standards, planning and project execution.

Category:	FY 2012	FY 2011
Building	99.27%	99.69%
Restrooms (Public)	99.90%	99.77%
Restrooms (Staff)	100%	100%
Grounds	99.89%	99.92%
Overall	99.77%	99.84%

Project Management

RFW provides WisDOT assistance with coordinating numerous site repair projects. RFW recommends projects, develops specifications, tracks progress and works with vendors and service providers to facilitate satisfactory project completion. Below are repair projects that were completed by professional service vendors through direct WisDOT purchase orders:

- 16-Madison: Installed water filter system.
- 19-Beloit: Installed water filter system.
- 21-Kenosha: Installed water filter system and installed digital exterior access keypad.
- 34-Wrightstown: Install tinted window shade and lift system.
- 41-Abrams: Removed existing maintenance shed and installed new shed.
- 44-Coloma: Removed existing maintenance shed and installed new shed.



Water Filter at Madison SWEF



Sheds at Abrams SWEF 41 and Coloma SWEF 44



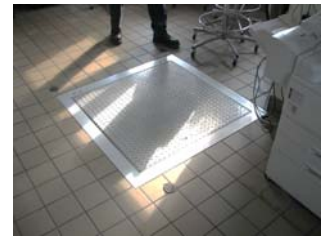
Service providers also coordinated special repair projects as budgets allowed under funds allocated for “unforeseen” work. All project concepts and costs were approved by WisDOT and RFW assisted as needed. Some of the projects are listed below. Contact RFW for a complete list.

- 11-Dickeyville: Installed mailbox and replaced two storm doors and faucet.
- 16-Madison: Carroll Electric installed new LED light at flagpole. Nova Plumbing removed stoppage from waterless urinal. Pyramid Telephone tested and repaired phone lines.

- 19-Beloit: Carroll Electric replaced motor and belts in several exhaust fans. Nova Plumbing repaired water leak inside the block wall behind urinal. Thiele Heating & Air Conditioning located and repaired gas leak.
- 21-Kenosha: Painted safety rail, replaced lamps over driver counter and repaired flooding issues caused by water softener.
- 22-Racine: Replaced broken lens on fluorescent fixture, repaired flag pole light sensor and flood light and installed gutter screens on north side.
- 34-Wrightstown: Repaired storm door and bathroom window.
- 35-Newton: Installed new sink and faucet and repaired toilet.
- 41-Abrams: Repaired shelf using existing material. Replaced all trim work on exterior foyer.
- 44-Coloma: New exterior trim work on foyer.
- 53-West Salem: Diagnosed and replaced toilet flapper and malfunctioning water valve.
- 61-Hudson: Various painting projects, cleaned mold from closet and repaired screen door latch.
- 63- Menominee: New hardscape and plantings.

Some facilities had extra work costs related to repairs. Some of the extra work projects are listed below. Contact RFW for a complete list.

- 21-Kenosha: A&R Door Service, Inc. repaired four overhead brand trolley ½ commercial operators, bearings and drive shaft assembly. Lee Plumbing repaired urinal and pumped septic due to flooding. Southport Heating & Cooling performed maintenance on all exhaust fans and replaced belts. Great Lake Electric replaced corroded outlets in the inspection bay.
- 41-Abrams: FerrelGas refilled LP tank and billed service provider.



Accounting and Record Keeping



RFW maintains comprehensive records for the program management services and program site maintenance services. Revenues and expenses are monitored on a monthly, quarterly, and annual basis throughout the State's fiscal year. The financial data is compiled in reports and distributed to service providers and WisDOT staff for their respective uses.

The SWEFM Program fiscal year 2012 actual versus budgeted site services costs are summarized in Table 3. Actual costs were billed as they were accrued

monthly on a per cleaning, per mowing, per snow removal, and time and material cost per landscape and repair project. The Janitorial services were invoiced at 98.54% of the budget for this line item. Mowing services were invoiced at levels below the budgeted amounts by \$4,506.87 as a result of abnormally dry summer weather conditions. Likewise, Snow Removal services were invoiced at levels below the budgeted amounts by \$6,832.79 as a result of an arid winter.



Table 3: SWEFM Program				
Actual to Budget Cost Summary				
FY 2012 (July 1, 2011 - June 30, 2012)				
Project	Actual Costs	Budgeted Costs	Difference	% of Budget
Janitorial	\$112,266.40	\$112,760.32	(\$493.92)	99.56%
Lawn Mowing	\$18,258.93	\$22,765.80	(\$4,506.87)	80.20%
Snow Removal	\$848.71	\$7,681.50	(\$6,832.79)	11.05%
Janitorial, Mowing & Snow Removal Total	\$131,374.04	\$143,207.62	(\$11,833.58)	91.74%
Tree & Landscape Maintenance				
Tree & Landscape Maintenance	\$3,271.92	\$4,526.68	(\$1,254.76)	72.28%
Minor Repairs (performed by service provider)	\$38,407.87	\$46,817.49	(\$8,409.62)	82.04%
Minor Repairs (performed by Professional Vendors via WisDOT Direct PO)	\$20,123.50	\$20,123.50	\$0.00	100.00%
Landscaping & Minor Repairs Total	\$61,803.29	\$71,467.67	(\$9,664.38)	86.48%
Grand Total				
Grand Total	\$193,177.33	\$214,675.29	(\$21,497.96)	89.99%

Landscape projects remained under budget while still completing weed abatement and other landscape maintenance services. Service providers continued to perform preventative maintenance on facility mechanical systems and performed simple facility repairs as well. Other essential maintenance duties performed by service providers included: contracting for necessary services such as septic pumping, providing water softener salt, light bulbs, and furnace filters. Larger facility improvements were contracted by WisDOT and are discussed further under “Project Management” in this report.

Service Provider Support

Service Providers have unencumbered access to RFW staff for consultation on any issue regarding their contractual obligations to each SWEF for which they deliver services. Be it landscaping, maintenance or janitorial in nature, RFW provides whatever is necessary (research, resources, etc.) to the service providers to assist them in providing quality performance to their customers. Through inspections, via phone and e-mail and on-site meetings, RFW and service providers communicate regularly to meet the goals and needs of the SWEFM program.



Communications

WisDOT BHM (Bureau of Highway Maintenance), Roadside Facilities Division personnel, RFW, service providers and State Patrol SWEF personnel communicate through various media to ensure SWEF concerns and problems are addressed on as timely a basis as possible. Whether by e-mail, inspection reports or other telecommunicative devices, information is shared by all parties on an ongoing basis providing for a free flow of interaction and participation. Generally, WisDOT, RFW and State Patrol meet as least annually to discuss budgets and projects prior to each new fiscal year so that all parties know what to expect and in what timeframes. SWEF Inspector Sergeants and staff are provided with contact information for service providers and RFW in order that they have ready access for assistance.

Blank Page

Actual to Budget Report

Safety Weight Enforcement Facility Maintenance Program

Fiscal Year 2012
(July 1, 2011 - June 30, 2012)

County/Site Name	Month Invoiced Thru		YTD Actual	Overall Budget	% of Overall Budget	Difference	
Grant 11--Dickeyville	Jun 2012	Janitorial Project Total:	\$5,232.00	\$5,232.00	100.00%	\$0.00	
		Mowing Project Total:	\$3,036.00	\$3,174.00	95.65%	(\$138.00)	
		Snow Removal Total:	\$0.00	\$0.00	#Num!	\$0.00	
	Project ID #: 0522-02-11		Janitorial/Mowing Project Total:	\$8,268.00	\$8,406.00	98.36%	(\$138.00)
			Landscape Project Total:	\$172.84	\$200.00	86.42%	(\$27.16)
			Minor Repair Project Total:	\$856.05	\$1,335.20	64.11%	(\$479.15)
	Project ID #: 1200-02-60		Landscape/Minor Repair Project Total:	\$1,028.89	\$1,535.20	67.02%	(\$506.31)
	Service Provider: Handishop Industries		Site Total:	\$9,296.89	\$9,941.20	93.52%	(\$644.31)
	Dane 16-Mad--Madison	Jun 2012	Janitorial Project Total:	\$9,968.12	\$10,061.28	99.07%	(\$93.16)
			Mowing Project Total:	\$555.66	\$555.66	100.00%	\$0.00
Snow Removal Total:			\$142.52	\$2,944.80	4.84%	(\$2,802.28)	
Project ID #: 0522-02-16			Janitorial/Mowing Project Total:	\$10,666.30	\$13,561.74	78.65%	(\$2,895.44)
			Landscape Project Total:	\$208.19	\$696.75	29.88%	(\$488.56)
			Minor Repair Project Total:	\$3,168.06	\$3,092.21	102.45%	\$75.85
Project ID #: 1002-02-64			Landscape/Minor Repair Project Total:	\$3,376.25	\$3,788.96	89.11%	(\$412.71)
Service Provider: VIP Services, Inc.			Site Total:	\$14,042.55	\$17,350.70	80.93%	(\$3,308.15)
Rock 19--Beloit		Jun 2012	Janitorial Project Total:	\$13,280.00	\$13,280.00	100.00%	\$0.00
			Mowing Project Total:	\$1,350.00	\$1,350.00	100.00%	\$0.00
	Snow Removal Total:		\$595.00	\$2,800.00	21.25%	(\$2,205.00)	
	Project ID #: 0522-02-19		Janitorial/Mowing Project Total:	\$15,225.00	\$17,430.00	87.35%	(\$2,205.00)
			Landscape Project Total:	\$805.00	\$805.00	100.00%	\$0.00
			Minor Repair Project Total:	\$5,492.10	\$6,785.00	80.94%	(\$1,292.90)
	Project ID #: 1002-03-60		Landscape/Minor Repair Project Total:	\$6,297.10	\$7,590.00	82.97%	(\$1,292.90)
	Service Provider: Action Clean		Site Total:	\$21,522.10	\$25,020.00	86.02%	(\$3,497.90)
	Kenosha 21--Kenosha	Jun 2012	Janitorial Project Total:	\$28,976.64	\$30,105.60	96.25%	(\$1,128.96)
			Mowing Project Total:	\$1,282.32	\$1,923.48	66.67%	(\$641.16)
Snow Removal Total:			\$111.19	\$1,936.70	5.74%	(\$1,825.51)	
Project ID #: 0522-02-21			Janitorial/Mowing Project Total:	\$30,370.15	\$33,965.78	89.41%	(\$3,595.63)
			Landscape Project Total:	\$42.77	\$558.15	7.66%	(\$515.38)
			Minor Repair Project Total:	\$17,873.10	\$19,382.88	92.21%	(\$1,509.78)
Project ID #: 1032-05-60			Landscape/Minor Repair Project Total:	\$17,915.87	\$19,941.03	89.84%	(\$2,025.16)
Service Provider: Kenosha Achievement Center Inc.			Site Total:	\$48,286.02	\$53,906.81	89.57%	(\$5,620.79)

Actual to Budget Report

Safety Weight Enforcement Facility Maintenance Program

Fiscal Year 2012
(July 1, 2011 - June 30, 2012)

County/Site Name	Month Invoiced Thru		YTD Actual	Overall Budget	% of Overall Budget	Difference	
Racine 22--Racine	Jun 2012	Janitorial Project Total:	\$13,994.40	\$13,171.20	106.25%	\$823.20	
		Mowing Project Total:	\$321.20	\$578.16	55.56%	(\$256.96)	
		Snow Removal Total:	\$0.00	\$0.00	#Num!	\$0.00	
Project ID #: 0522-02-22		Janitorial/Mowing Project Total:	\$14,315.60	\$13,749.36	104.12%	\$566.24	
		Landscape Project Total:	\$173.84	\$61.16	284.24%	\$112.68	
		Minor Repair Project Total:	\$1,881.69	\$1,736.96	108.33%	\$144.73	
Project ID #: 1032-09-60		Landscape/Minor Repair Project Total:	\$2,055.53	\$1,798.12	114.32%	\$257.41	
Service Provider: Kenosha Achievement Center Inc.			Site Total:	\$16,371.13	\$15,547.48	105.30%	\$823.65
Outagamie 34-hh--Wrightstown	Jun 2012	Janitorial Project Total:	\$6,058.70	\$6,248.40	96.96%	(\$189.70)	
		Mowing Project Total:	\$514.50	\$550.00	93.55%	(\$35.50)	
		Snow Removal Total:	\$0.00	\$0.00	#Num!	\$0.00	
Project ID #: 0522-02-34		Janitorial/Mowing Project Total:	\$6,573.20	\$6,798.40	96.69%	(\$225.20)	
		Landscape Project Total:	\$0.00	\$69.10	0.00%	(\$69.10)	
		Minor Repair Project Total:	\$551.50	\$1,278.40	43.14%	(\$726.90)	
Project ID #: 1130-11-60		Landscape/Minor Repair Project Total:	\$551.50	\$1,347.50	40.93%	(\$796.00)	
Service Provider: Holiday House of Manitowoc, Inc.			Site Total:	\$7,124.70	\$8,145.90	87.46%	(\$1,021.20)
Manitowoc 35-hh--Newton	Jun 2012	Janitorial Project Total:	\$4,492.70	\$4,303.00	104.41%	\$189.70	
		Mowing Project Total:	\$508.25	\$906.50	56.07%	(\$398.25)	
		Snow Removal Total:	\$0.00	\$0.00	#Num!	\$0.00	
Project ID #: 0522-02-35		Janitorial/Mowing Project Total:	\$5,000.95	\$5,209.50	96.00%	(\$208.55)	
		Landscape Project Total:	\$30.00	\$90.00	33.33%	(\$60.00)	
		Minor Repair Project Total:	\$719.00	\$1,498.00	48.00%	(\$779.00)	
Project ID #: 1224-08-60		Landscape/Minor Repair Project Total:	\$749.00	\$1,588.00	47.17%	(\$839.00)	
Service Provider: Holiday House of Manitowoc, Inc.			Site Total:	\$5,749.95	\$6,797.50	84.59%	(\$1,047.55)
Oconto 41-gw--Abrams	Jun 2012	Janitorial Project Total:	\$5,918.12	\$5,918.12	100.00%	\$0.00	
		Mowing Project Total:	\$770.00	\$1,260.00	61.11%	(\$490.00)	
		Snow Removal Total:	\$0.00	\$0.00	#Num!	\$0.00	
Project ID #: 0522-02-41		Janitorial/Mowing Project Total:	\$6,688.12	\$7,178.12	93.17%	(\$490.00)	
		Landscape Project Total:	\$0.00	\$386.92	0.00%	(\$386.92)	
		Minor Repair Project Total:	\$652.71	\$3,318.84	19.67%	(\$2,666.13)	
Project ID #: 1152-04-60		Landscape/Minor Repair Project Total:	\$652.71	\$3,705.76	17.61%	(\$3,053.05)	
Service Provider: Goodwill Industries Northern WI & Upper			Site Total:	\$7,340.83	\$10,883.88	67.45%	(\$3,543.05)

Actual to Budget Report

Safety Weight Enforcement Facility Maintenance Program

Fiscal Year 2012
(July 1, 2011 - June 30, 2012)

County/Site Name	Month Invoiced Thru		YTD Actual	Overall Budget	% of Overall Budget	Difference	
Waushara 44--Coloma	Jun 2012	Janitorial Project Total:	\$4,845.00	\$4,940.00	98.08%	(\$95.00)	
		Mowing Project Total:	\$400.00	\$1,500.00	26.67%	(\$1,100.00)	
		Snow Removal Total:	\$0.00	\$0.00	#Num!	\$0.00	
	Project ID #: 0522-02-44		Janitorial/Mowing Project Total:	\$5,245.00	\$6,440.00	81.44%	(\$1,195.00)
			Landscape Project Total:	\$131.34	\$777.60	16.89%	(\$646.26)
			Minor Repair Project Total:	\$1,101.67	\$3,344.65	32.94%	(\$2,242.98)
	Project ID #: 1160-05-60		Landscape/Minor Repair Project Total:	\$1,233.01	\$4,122.25	29.91%	(\$2,889.24)
	Service Provider: Waushara Industries, Inc.		Site Total:	\$6,478.01	\$10,562.25	61.33%	(\$4,084.24)
	La Crosse 53--West Salem	Jun 2012	Janitorial Project Total:	\$5,668.00	\$5,668.00	100.00%	\$0.00
			Mowing Project Total:	\$3,036.00	\$3,174.00	95.65%	(\$138.00)
Snow Removal Total:			\$0.00	\$0.00	#Num!	\$0.00	
Project ID #: 0270-55-53			Janitorial/Mowing Project Total:	\$8,704.00	\$8,842.00	98.44%	(\$138.00)
			Landscape Project Total:	\$445.91	\$275.00	162.15%	\$170.91
			Minor Repair Project Total:	\$629.45	\$1,452.00	43.35%	(\$822.55)
Project ID #: 1071-01-68			Landscape/Minor Repair Project Total:	\$1,075.36	\$1,727.00	62.27%	(\$651.64)
Service Provider: Handishop Industries		Site Total:	\$9,779.36	\$10,569.00	92.53%	(\$789.64)	
St. Croix 61--Hudson		Jun 2012	Janitorial Project Total:	\$5,171.92	\$5,171.92	100.00%	\$0.00
			Mowing Project Total:	\$2,260.00	\$1,944.00	116.26%	\$316.00
	Snow Removal Total:		\$0.00	\$0.00	#Num!	\$0.00	
	Project ID #: 0522-02-61		Janitorial/Mowing Project Total:	\$7,431.92	\$7,115.92	104.44%	\$316.00
			Landscape Project Total:	\$485.75	\$187.00	259.76%	\$298.75
			Minor Repair Project Total:	\$2,571.75	\$2,382.00	107.97%	\$189.75
	Project ID #: 1020-07-69		Landscape/Minor Repair Project Total:	\$3,057.50	\$2,569.00	119.02%	\$488.50
	Service Provider: St. Croix Industries		Site Total:	\$10,489.42	\$9,684.92	108.31%	\$804.50
	Dunn 63--Menomonie	Jun 2012	Janitorial Project Total:	\$5,200.00	\$5,200.00	100.00%	\$0.00
			Mowing Project Total:	\$3,325.00	\$3,150.00	105.56%	\$175.00
Snow Removal Total:			\$0.00	\$0.00	#Num!	\$0.00	
Project ID #: 0522-02-63			Janitorial/Mowing Project Total:	\$8,525.00	\$8,350.00	102.10%	\$175.00
			Landscape Project Total:	\$776.28	\$200.00	388.14%	\$576.28
			Minor Repair Project Total:	\$1,584.81	\$2,420.00	65.49%	(\$835.19)
Project ID #: 1022-07-69			Landscape/Minor Repair Project Total:	\$2,361.09	\$2,620.00	90.12%	(\$258.91)
Service Provider: Indianhead Enterprises, Inc.		Site Total:	\$10,886.09	\$10,970.00	99.24%	(\$83.91)	

Actual to Budget Report

Safety Weight Enforcement Facility Maintenance Program

Fiscal Year 2012
(July 1, 2011 - June 30, 2012)

County/Site Name	Month Invoiced Thru		YTD Actual	Overall Budget	% of Overall Budget	Difference
Douglas 71--Superior	Jun 2012	Janitorial Project Total:	\$3,460.80	\$3,460.80	100.00%	\$0.00
		Mowing Project Total:	\$900.00	\$2,700.00	33.33%	(\$1,800.00)
		Snow Removal Total:	\$0.00	\$0.00	#Num!	\$0.00
Project ID #: 0522-02-71		Janitorial/Mowing Project Total:	\$4,360.80	\$6,160.80	70.78%	(\$1,800.00)
		Landscape Project Total:	\$0.00	\$220.00	0.00%	(\$220.00)
		Minor Repair Project Total:	\$1,325.98	\$2,714.56	48.85%	(\$1,388.58)
Project ID #: 1190-42-71		Landscape/Minor Repair Project Total:	\$1,325.98	\$2,934.56	45.18%	(\$1,608.58)
Service Provider: Superior Vocations Center, Inc.		Site Total:	\$5,686.78	\$9,095.36	62.52%	(\$3,408.58)
Grand Totals:		Janitorial Project Total:	\$112,266.40	\$112,760.32	99.56%	(\$493.92)
		Mowing Project Total:	\$18,258.93	\$22,765.80	80.20%	(\$4,506.87)
		Snow Removal Total:	\$848.71	\$7,681.50	11.05%	(\$6,832.79)
		Janitorial/Mowing Project Total:	\$131,374.04	\$143,207.62	91.74%	(\$11,833.58)
		Landscape Project Total:	\$3,271.92	\$4,526.68	72.28%	(\$1,254.76)
		Minor Repair Project Total:	\$38,407.87	\$46,817.49	82.04%	(\$8,409.62)
		Landscape/Minor Repair Project Total:	\$41,679.79	\$51,344.17	81.18%	(\$9,664.38)
		Grand Total:	\$173,053.83	\$194,551.79	88.95%	(\$21,497.96)

Proposed Improvements through WisDOT Direct PO's

Fiscal Year 2012

Safety Weight Enforcement Facility Maintenance Program

Prepared by Rehabilitation For Wisconsin Inc.

Site: **Madison 16-Mad** Landscape - Repair Proj ID: 1002-02-64 Landscape Rate: \$14.87
 Service Provider: VIP Services, Inc. Minor Repair Rate: \$32.95

RFW #	Project Description	Est Project \$	Final Project \$	Difference
Professional Services				
867	Install Water Filter System 7/31/2011 Issued P.O. #3481653	\$4,950.00	\$4,950.00	
Site Total:		\$4,950.00	\$4,950.00	\$0.00

Site: **Beloit 19** Landscape - Repair Proj ID: 1002-03-60 Landscape Rate: \$45.00
 Service Provider: Action Clean Minor Repair Rate: \$20.00

RFW #	Project Description	Est Project \$	Final Project \$	Difference
Professional Services				
853	Install Water Filter System 7/31/2011 P.O. Issued #3481653	\$4,360.00	\$4,360.00	
Site Total:		\$4,360.00	\$4,360.00	\$0.00

Site: **Kenosha 21** Landscape - Repair Proj ID: 1032-05-60 Landscape Rate: \$34.21
 Service Provider: Kenosha Achievement Center Inc. Minor Repair Rate: \$34.21

RFW #	Project Description	Est Project \$	Final Project \$	Difference
Professional Services				
854	Install Water Filter System 9/30/2011 Issued P.O. #3478827	\$4,130.00	\$4,130.00	
880	Install digital exterior access keypad 2/29/2012 Issued P.O. #3490347	\$1,949.50	\$1,949.50	
Site Total:		\$6,079.50	\$6,079.50	\$0.00

Site: **Wrightstown 34-h** Landscape - Repair Proj ID: 1130-11-60 Landscape Rate: \$14.70
 Service Provider: Holiday House of Manitowoc, Inc. Minor Repair Rate: \$14.70

RFW #	Project Description	Est Project \$	Final Project \$	Difference
Professional Services				
877	Install tinted window shades and lift systems. 3/31/2012 Issued P.O. # 3490348	\$1,134.00	\$1,134.00	
Site Total:		\$1,134.00	\$1,134.00	\$0.00

Proposed Improvements through WisDOT Direct PO's

Fiscal Year 2012

Safety Weight Enforcement Facility Maintenance Program

Prepared by Rehabilitation For Wisconsin Inc.

Site: Abrams 41-gw **Landscape - Repair Proj ID:** 1152-04-60 **Landscape Rate:** \$19.56
Service Provider: Goodwill Industries Northern WI & Upper MI, Inc. **Minor Repair Rate:** \$19.56

RFW #	Project Description	Est Project \$	Final Project \$	Difference
Professional Services				
876	Storage shed 11/30/2011 Issued P.O. #3486201.	\$1,800.00	\$1,800.00	
Site Total:		\$1,800.00	\$1,800.00	\$0.00

Site: Coloma 44 **Landscape - Repair Proj ID:** 1160-05-60 **Landscape Rate:** \$23.88
Service Provider: Waushara Industries, Inc. **Minor Repair Rate:** \$16.45

RFW #	Project Description	Est Project \$	Final Project \$	Difference
Professional Services				
873	Storage shed 11/30/2012 Issued P.O. #3486200	\$1,800.00	\$1,800.00	
Site Total:		\$1,800.00	\$1,800.00	\$0.00

	Est Project \$	Final Project \$	Difference
Grand Total:	\$20,123.50	\$20,123.50	\$0.00

Blank Page



Report prepared by:

REHABILITATION FOR WISCONSIN, INC.

2000 Engel Street, Suite 100 ♦ Madison, WI 53713-4822

608/244-5310 phone ♦ 608/244-9097 fax ♦ rfw@rfw.org e-mail

