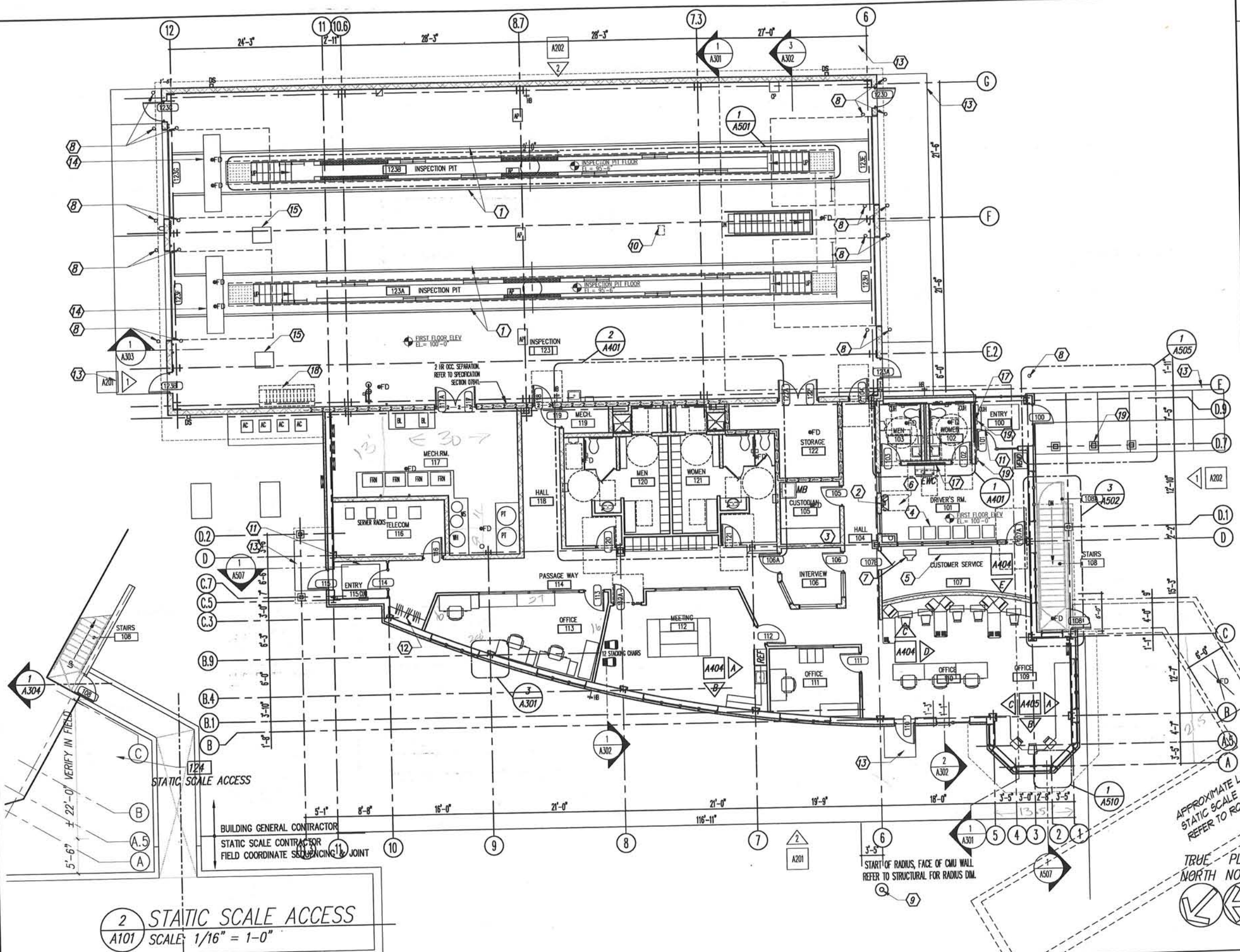


16 Oct 2006 - 11:07a T:\06113\CAD\A101.dwg by: plafson



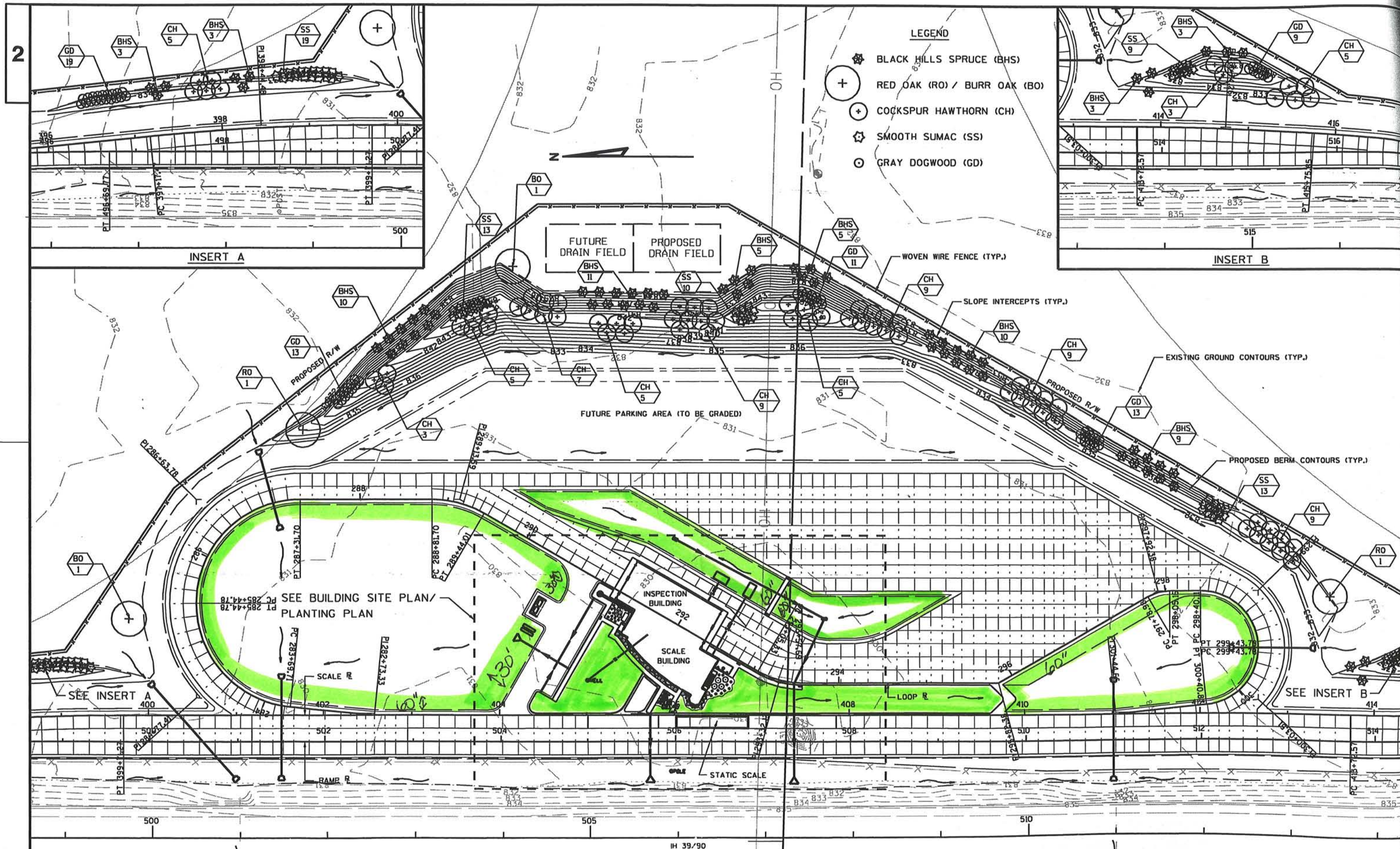
- ### KEY NOTES
- ① PAINTED TRAFFIC STRIPE, REFER TO SECTION 09900 SPECIFICATIONS
  - ② WALL MOUNTED SWING STOOLS. COORDINATE GROUTING AND ANCHORAGE WITH MASONRY.
  - ③ SHELVING. REFER TO 2/A507.
  - ④ FIXED AUDIENCE SEATING. REFER TO SECTION 12610 SPECIFICATIONS.
  - ⑤ FLOOR MOUNTED BENCH. REFER TO SECTION 10505 SPECIFICATIONS.
  - ⑥ WALL MOUNTED TELEPHONE ENCLOSURE. REFER TO SPECIFICATIONS AND 4/A506.
  - ⑦ CEILING MOUNTED TV BRACKET. MINIMUM CLEAR HEIGHT 80" A.F.F. REFER TO SECTION 11132 SPECIFICATIONS
  - ⑧ PIPE BOLLARD (TYPICAL). REFER TO 1/A509.
  - ⑨ FLAGPOLE, REFER TO SITE PLAN
  - ⑩ OVERHEAD DOOR CONTROL CONSOLE. REFER TO 2/A502 AND ELECTRICAL.
  - ⑪ RECESSED FOOT GRILLE 4'-0" X 6'-0" REFER TO 2/A104.
  - ⑫ COAT RACK. REFER TO SPECIFICATION SECTION 10914.
  - ⑬ CONCRETE STOOPS AND APRONS BY GENERAL BUILDING CONTRACTOR, REFER TO ROADWAY DRAWINGS FOR ADDITIONAL CONCRETE WORK, REFER TO 3/A507 FOR CLEARANCE REQUIREMENTS.
  - ⑭ BRAKE TEST EQUIPMENT PIT BY GENERAL BUILDING CONTRACTOR - REFER TO STRUCTURAL, ELECTRICAL, AND PLUMBING FOR WORK IN THIS CONTRACT.
  - ⑮ BRAKE TESTING COMPUTER / PRINTER SUPPLIED BY OTHER. INSTALLATION BY OTHERS. REFER TO ELECTRICAL FOR WORK IN THIS CONTRACT.
  - ⑯ WALL/SURFACE MOUNTED FLUORESCENT FIXTURE. REFER TO ELECTRICAL DRAWINGS.
  - ⑰ RECESSED MAP CASE. 6'-0" WIDE X 4'-0" HIGH. TOP OF CASE 6'-8" A.F.F. REFER TO SPECIFICATION SECTION 10418.
  - ⑱ PORTABLE STAIR
  - ⑲ PUSH PAD FOR AUTO DOOR OPENER

- ### SHEET NOTES
1. NOTE: REFER TO DIMENSION PLAN, A106 FOR STRUCTURAL GRID AND BUILDING DIMENSIONS.
  2. NOTE: REFER TO SHEET A105 & G102 FOR PARTITION TYPES

2 STATIC SCALE ACCESS  
A101 SCALE: 1/16" = 1'-0"

1 GROUND FLOOR PLAN  
A101 SCALE: 1/16" = 1'-0"

PLANS PREPARED BY: PLUNKETT RAYSICH ARCHITECTS, LLP. MADISON, WI	PRA# 06113	FLOOR PLAN	DATE: 10/16/06	100% PS &
STATE PROJECT NUMBER: 1002-04-71   IH 39/90 IL. STATE LINE-MADISON RD.	COUNTY: ROCK	LA PRAIRIE SAFETY & WEIGHT FACILITY 19	SHEET NO: 74	DWG. 11/01
SCALE, FEET			REVISION:	DATE:



- LEGEND**
- ★ BLACK HILLS SPRUCE (BHS)
  - + RED OAK (RO) / BURR OAK (BO)
  - ⊕ COCKSPUR HAWTHORN (CH)
  - ☆ SMOOTH SUMAC (SS)
  - GRAY DOGWOOD (GD)

**GENERAL NOTES**

EDGE OF PLANTING BED IS EDGE OF PAVEMENT AND/OR BUILDING UNLESS OTHERWISE NOTED.

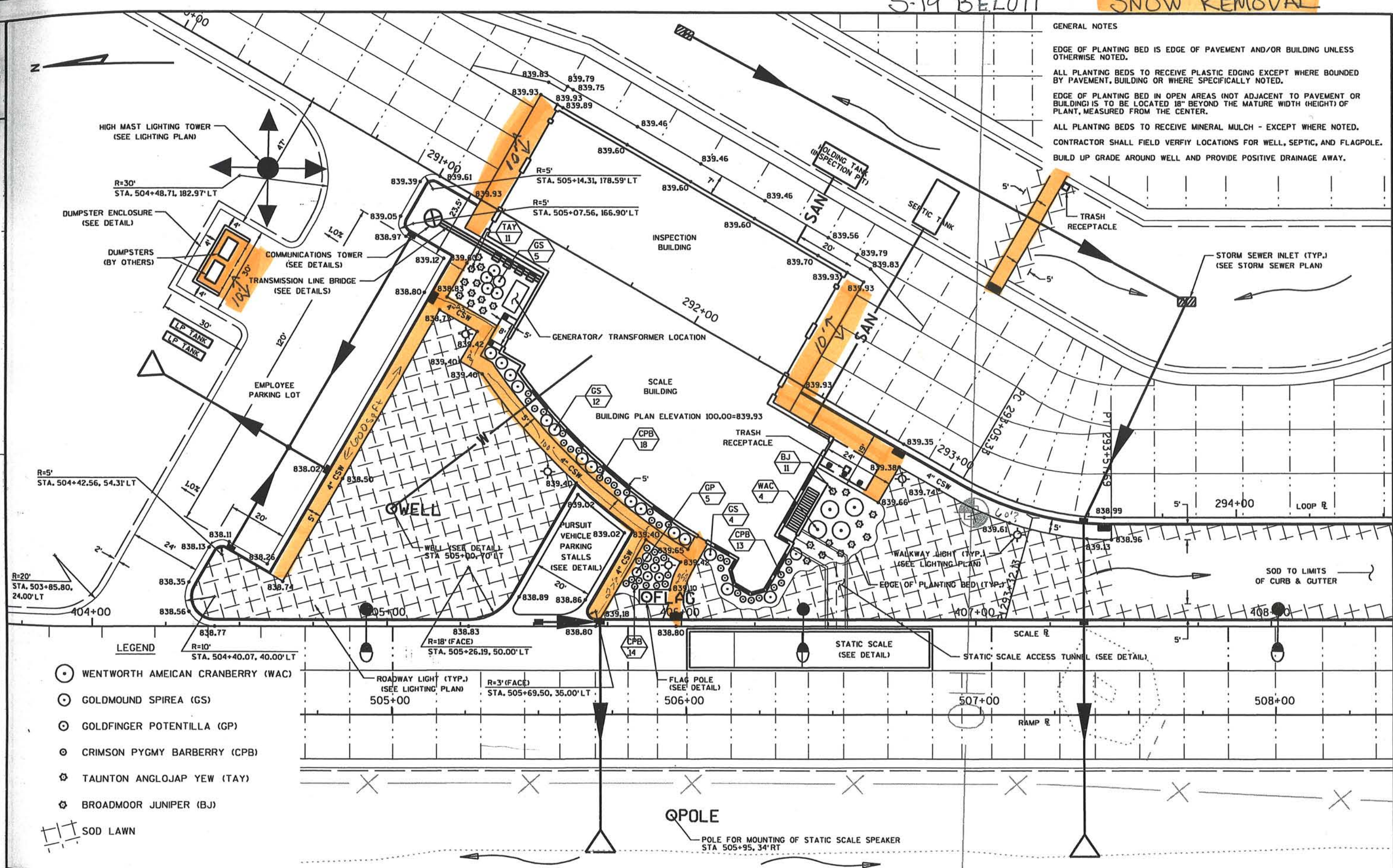
ALL PLANTING BEDS TO RECEIVE PLASTIC EDGING EXCEPT WHERE BOUNDED BY PAVEMENT, BUILDING OR WHERE SPECIFICALLY NOTED.

EDGE OF PLANTING BED IN OPEN AREAS (NOT ADJACENT TO PAVEMENT OR BUILDING) IS TO BE LOCATED 18" BEYOND THE MATURE WIDTH (HEIGHT) OF PLANT, MEASURED FROM THE CENTER.

ALL PLANTING BEDS TO RECEIVE MINERAL MULCH - EXCEPT WHERE NOTED.

CONTRACTOR SHALL FIELD VERIFY LOCATIONS FOR WELL, SEPTIC, AND FLAGPOLE.

BUILD UP GRADE AROUND WELL AND PROVIDE POSITIVE DRAINAGE AWAY.



**LEGEND**

- WENTWORTH AMERICAN CRANBERRY (WAC)
- GOLDMOUND SPIREA (GS)
- GOLDFINGER POTENTILLA (GP)
- CRIMSON PYGMY BARBERRY (CPB)
- TAUNTON ANGLOJAP YEW (TAY)
- BROADMOOR JUNIPER (BJ)
- SOD LAWN