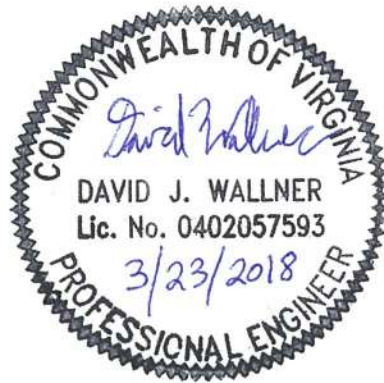
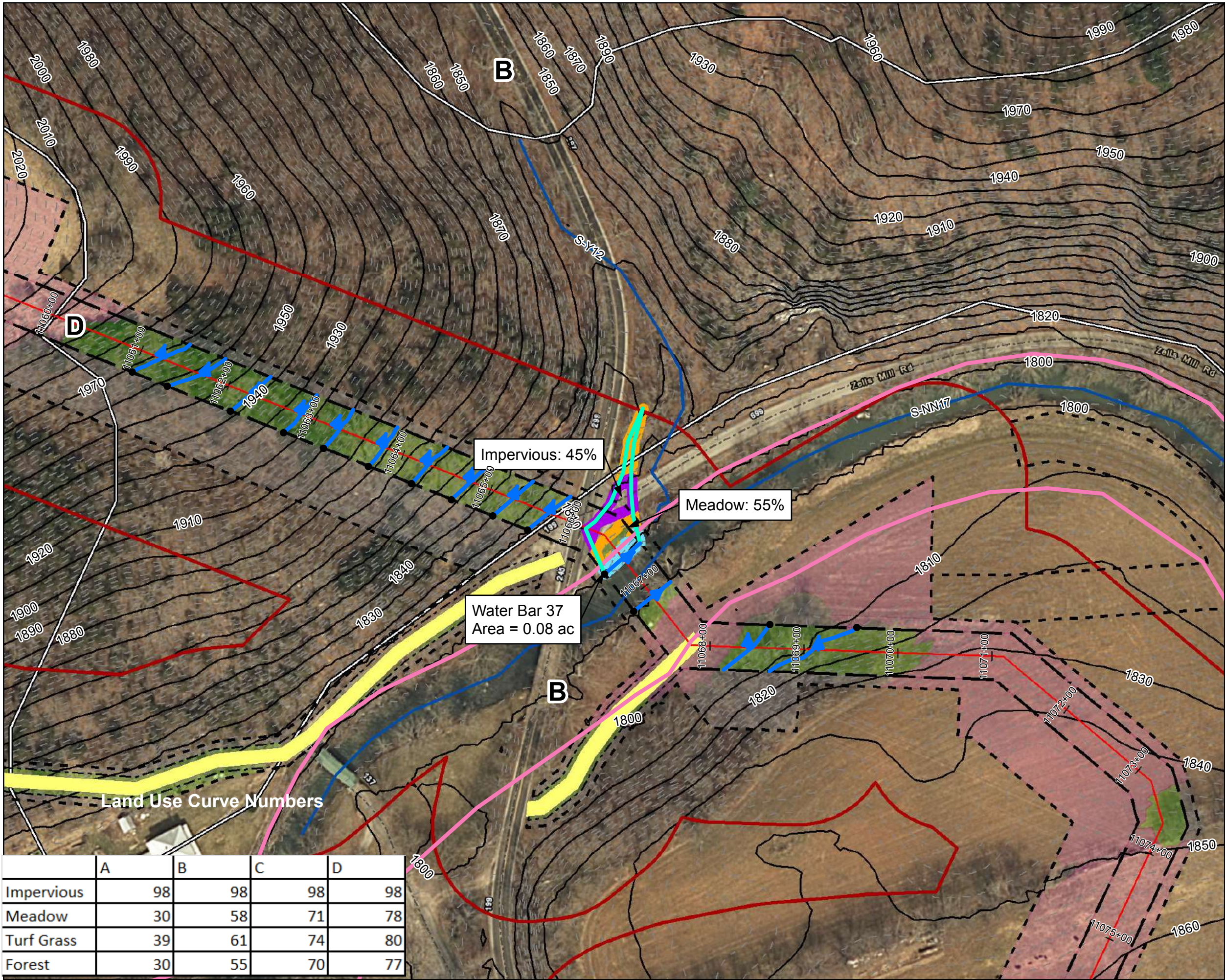


By virtue of this seal and signature, all supporting documents included in this package are accurate and support the design presented herein.





	A	B	C	D
Impervious	98	98	98	98
Meadow	30	58	71	78
Turf Grass	39	61	74	80
Forest	30	55	70	77

- Legend**
- Approximate Location of Water Bar End Treatment
 - Permanent Water Bar 10-ft End Treatment
 - Permanent Water Bar 15-ft End Treatment
 - Permanent Water Bar 20-ft End Treatment
 - Sheetflow
 - Shallow Concentrated Flow
 - Streams
 - Stationing
 - Alignment Centerline
 - Permanent Easement
 - Limit of Disturbance
 - MLV Site
 - Access Road Permanent Easement
 - Existing Impervious Surveyed Road Edge
 - New/Proposed Impervious Road Edge
 - Water Bar Drainage Area
 - 100-year Floodplain
 - Pond
 - Wetland
 - Hydrologic Soil Groups
 - 100 ft Buffer off of Limits of Disturbance
 - Agricultural
 - Forest
 - Impervious
 - Meadow
 - Turf/Grass
 - Open Water
 - Agricultural
 - Barren
 - Brush
 - Meadow
 - 10-foot Contour
 - 2-foot Contour

NAD 1983 UTM 17N (feet)

1 in = 100 feet

100 50 0 100 Feet



Mountain Valley Pipeline Project

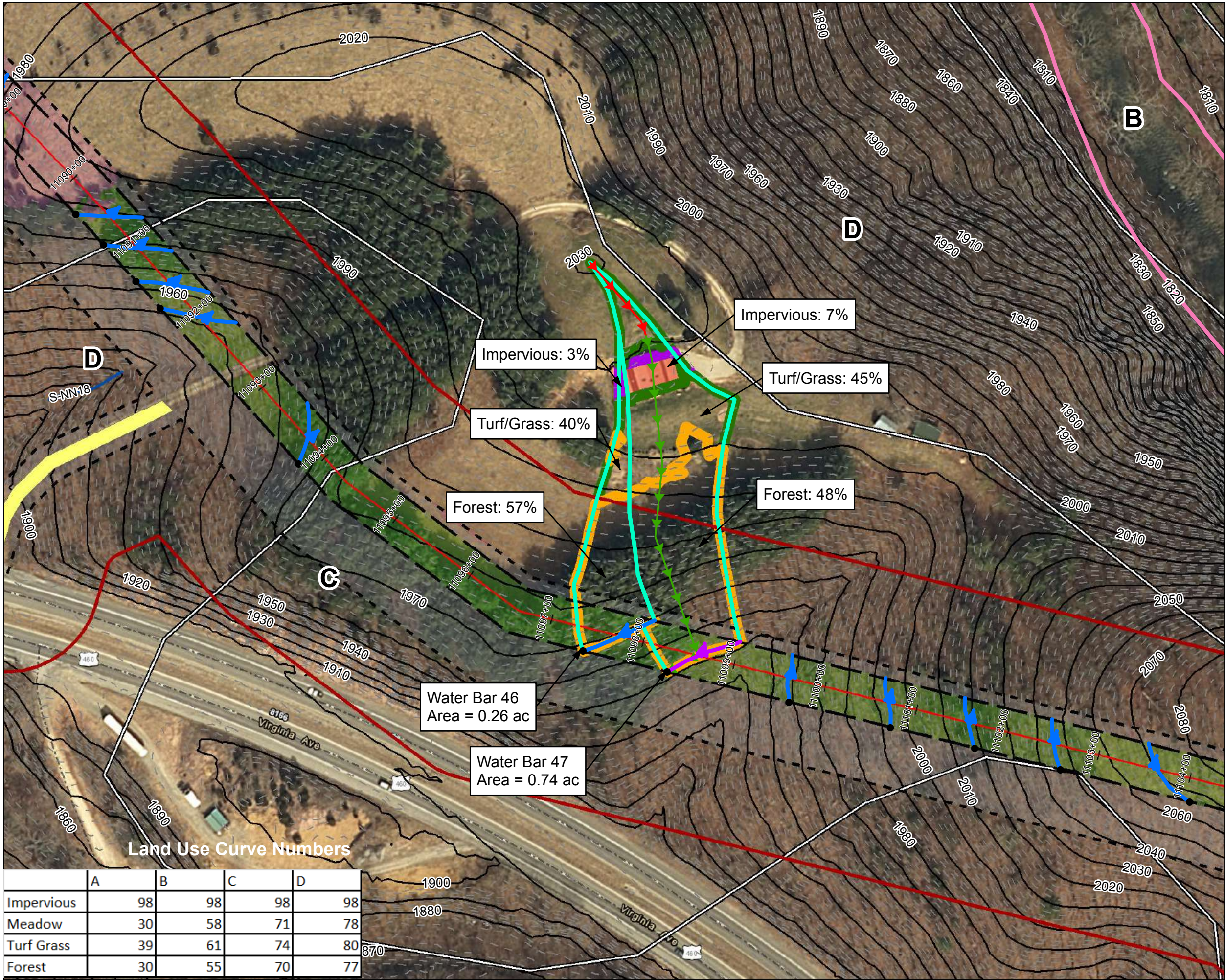


**Stormwater Drainage Exhibits
Water Bar 37
Spread 9**

Figure 001
Giles County, Virginia

March, 2018

Data Sources: Imagery from ESRI Streaming Data 2014, Delineated streams surveyed by Tetra Tech Inc. 2014 to 2017, Transportation data from VITA map layer 2016, Elevation data derived from LIDAR provided by EQT 2016, Soils from NRCS Gridded Soil Survey Geographic (SSURGO) database 2014, Land Use digitized from ESRI World Imagery 2015, Agricultural Area from National Land Cover Dataset 2011.



Legend

- Approximate Location of Water Bar End Treatment
- Permanent Water Bar 10-ft End Treatment
- Permanent Water Bar 15-ft End Treatment
- Permanent Water Bar 20-ft End Treatment
- Sheetflow
- Shallow Concentrated Flow
- Streams
- Stationing
- Alignment Centerline
- Permanent Easement
- Limit of Disturbance
- MLV Site
- Access Road Permanent Easement
- Existing Impervious
- New/Proposed Impervious Road Edge
- Water Bar Drainage Area
- 100-year Floodplain
- Pond
- Wetland
- Hydrologic Soil Groups
- 100 ft Buffer off of Limits of Disturbance
- Agricultural
- Forest
- Impervious
- Meadow
- Turf/Grass
- Open Water
- Agricultural
- Barren
- Brush
- Meadow
- 10-foot Contour
- 2-foot Contour

NAD 1983 UTM 17N (feet)

1 in = 100 feet

100 50 0 100 Feet

Mountain Valley Pipeline Project

Mountain Valley PIPELINE

Stormwater Drainage Exhibits

Water Bar 46

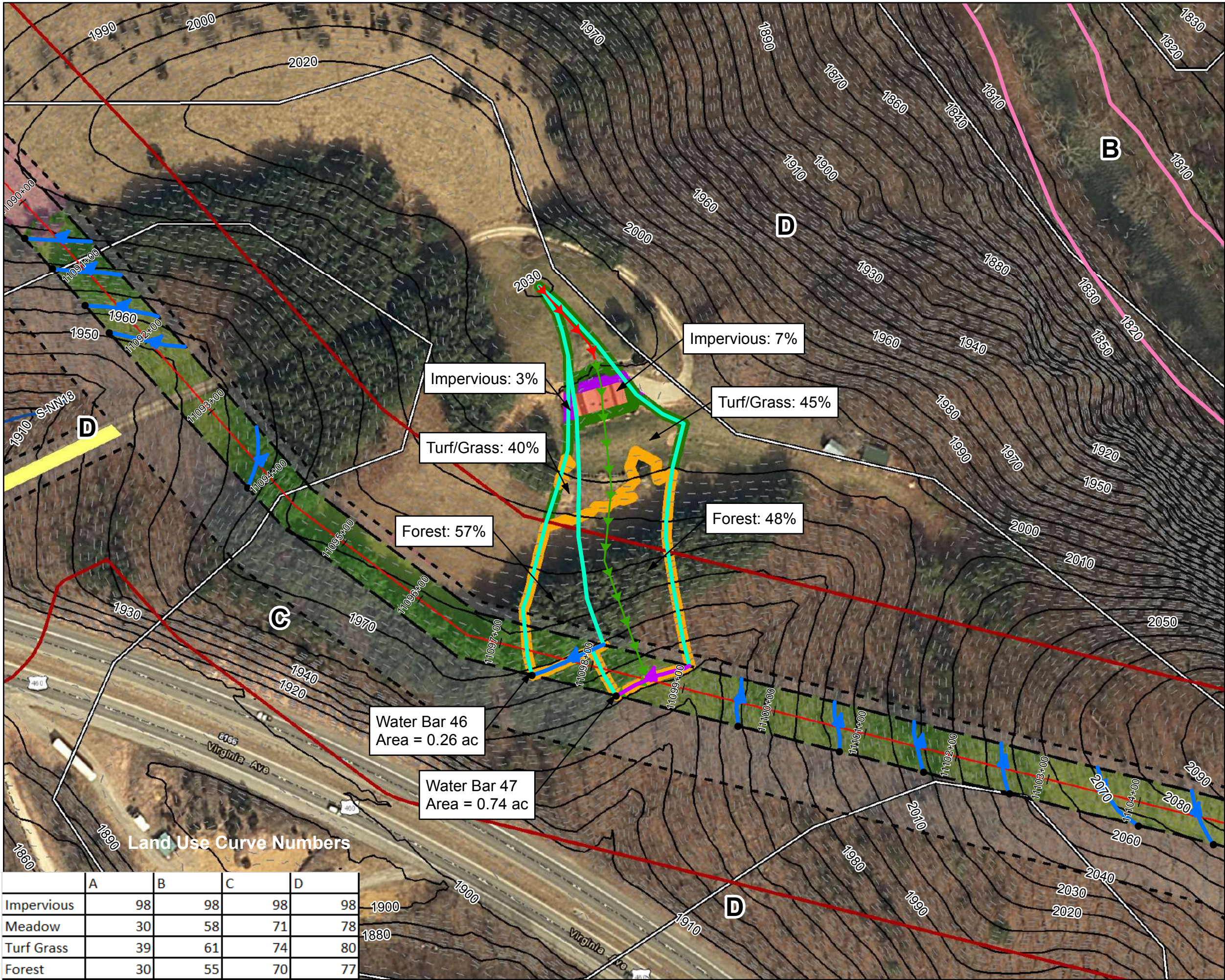
Spread 9

Figure 002

Giles County, Virginia

March, 2018

Data Sources: Imagery from ESRI Streaming Data 2014, Delineated streams surveyed by Tetra Tech Inc. 2014 to 2017, Transportation data from VITA map layer 2016, Elevation data derived from LIDAR provided by EQT 2016, Soils from NRCS Gridded Soil Survey Geographic (SSURGO) database 2014, Land Use digitized from ESRI World Imagery 2015, Agricultural Area from National Land Cover Dataset 2011.



Legend

- Approximate Location of Water Bar End Treatment
- Permanent Water Bar 10-ft End Treatment
- Permanent Water Bar 15-ft End Treatment
- Permanent Water Bar 20-ft End Treatment
- Sheetflow
- Shallow Concentrated Flow
- Streams
- Stationing
- Alignment Centerline
- Permanent Easement
- Limit of Disturbance
- MLV Site
- Access Road Permanent Easement
- Existing Impervious
- Surveyed Road Edge
- New/Proposed Impervious Road Edge
- Water Bar Drainage Area
- 100-year Floodplain
- Pond
- Wetland
- Hydrologic Soil Groups
- 100 ft Buffer off of Limits of Disturbance
- Agricultural
- Forest
- Impervious
- Meadow
- Turf/Grass
- Open Water
- Agricultural
- Barren
- Brush
- Meadow
- 10-foot Contour
- 2-foot Contour

NAD 1983 UTM 17N (feet)

1 in = 100 feet

100 50 0 100 Feet

Mountain Valley Pipeline Project

Mountain Valley PIPELINE

Stormwater Drainage Exhibits

Water Bar 47

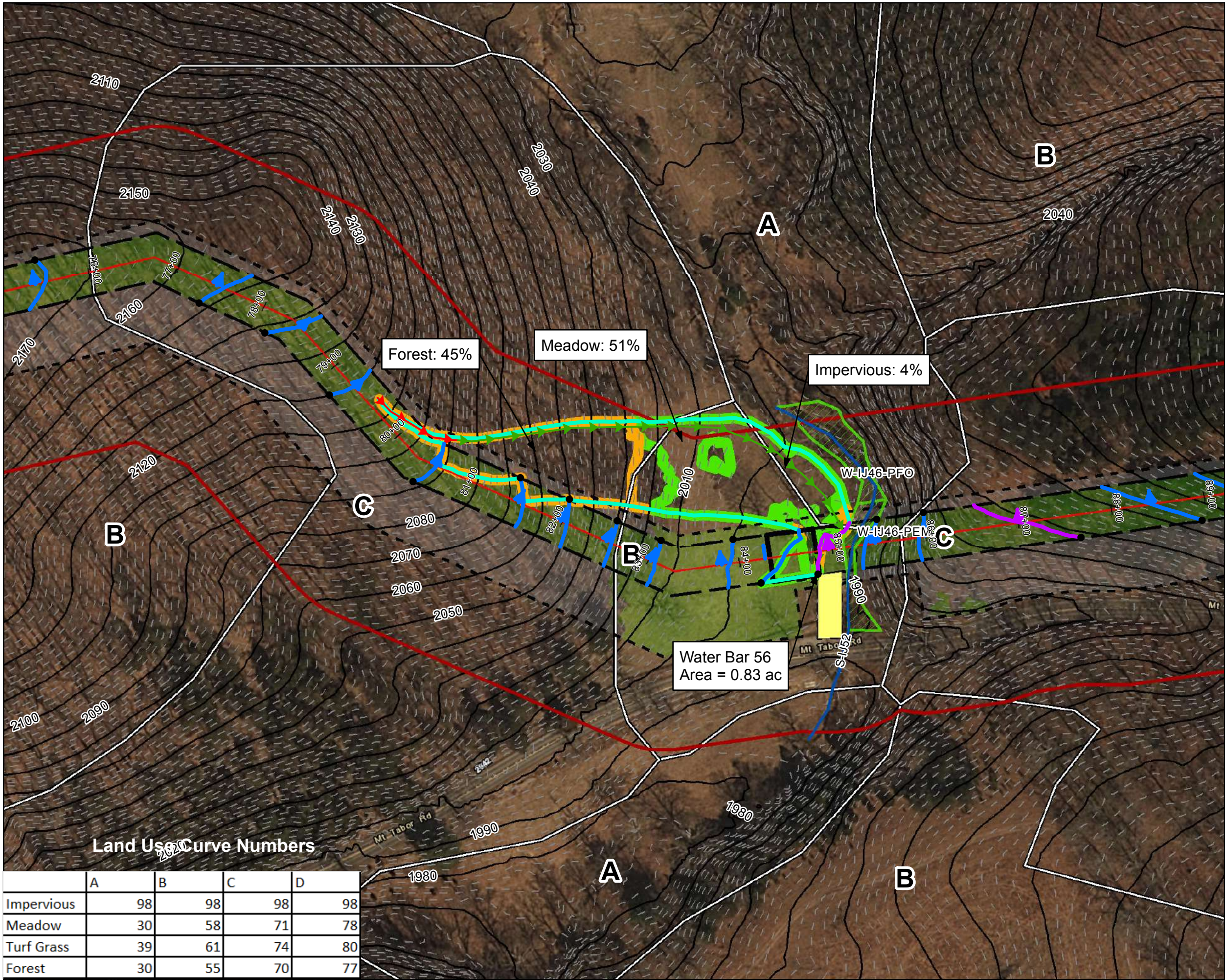
Spread 9

Figure 003

Giles County, Virginia

March, 2018

Data Sources: Imagery from ESRI Streaming Data 2014, Delineated streams surveyed by Tetra Tech Inc. 2014 to 2017, Transportation data from VITA map layer 2016, Elevation data derived from LIDAR provided by EQT 2016, Soils from NRCS Gridded Soil Survey Geographic (SSURGO) database 2014, Land Use digitized from ESRI World Imagery 2015, Agricultural Area from National Land Cover Dataset 2011.



Legend

- Approximate Location of Water Bar End Treatment
- Permanent Water Bar 10-ft End Treatment
- Permanent Water Bar 15-ft End Treatment
- Permanent Water Bar 20-ft End Treatment
- Sheetflow
- Shallow Concentrated Flow
- Streams
- Stationing
- Alignment Centerline
- Permanent Easement
- Limit of Disturbance
- MLV Site
- Access Road Permanent Easement
- Existing Impervious Surveyed Road Edge
- New/Proposed Impervious Road Edge
- Water Bar Drainage Area
- 100-year Floodplain
- Pond
- Wetland
- Hydrologic Soil Groups
- 100 ft Buffer off of Limits of Disturbance
- Agricultural
- Forest
- Impervious
- Meadow
- Turf/Grass
- Open Water
- Agricultural
- Barren
- Brush
- Meadow
- 10-foot Contour
- 2-foot Contour

NAD 1983 UTM 17N (feet)

1 in = 100 feet

100 50 0 100 Feet

Mountain Valley Pipeline Project

Mountain Valley PIPELINE

Stormwater Drainage Exhibits

Water Bar 56

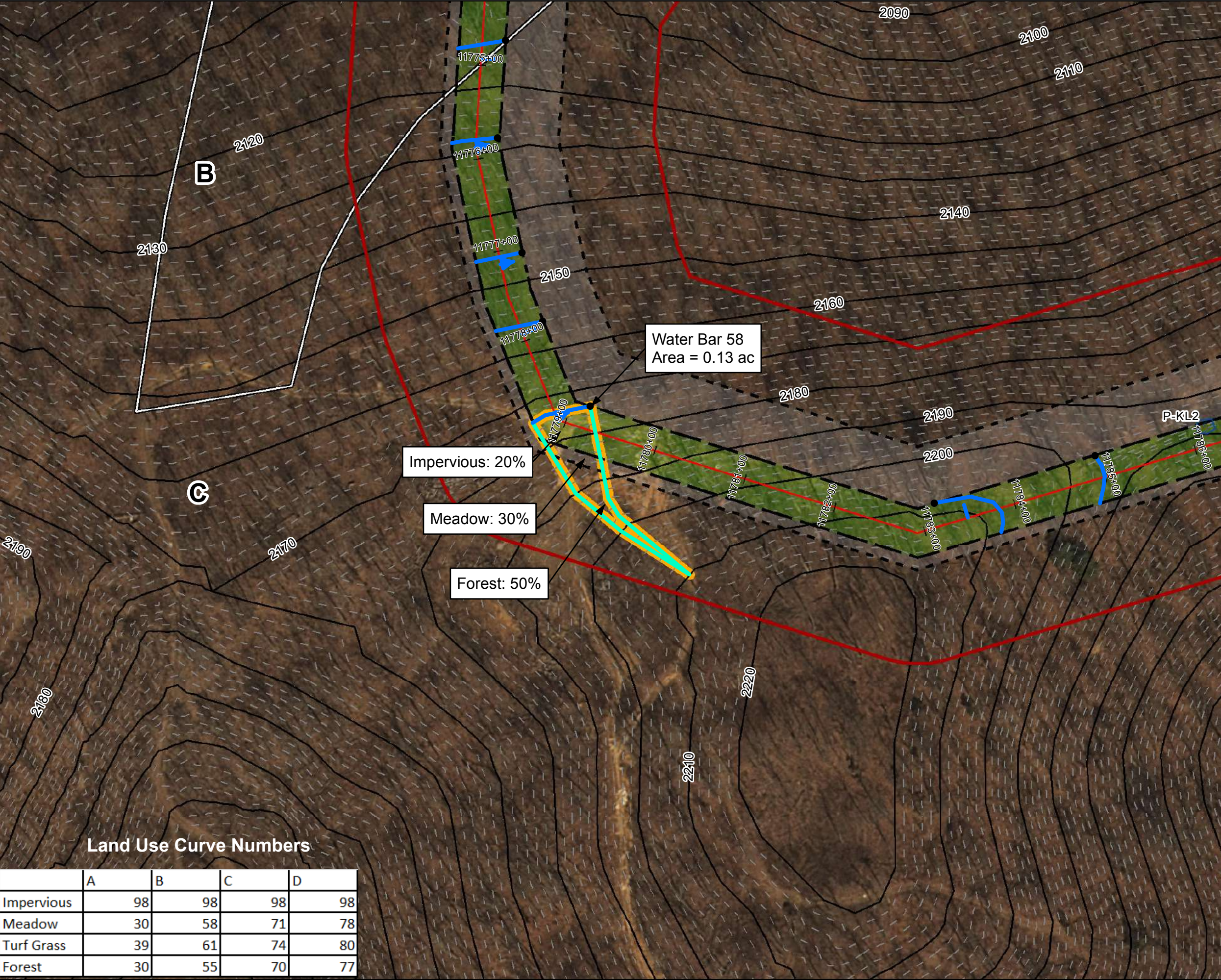
Spread 9

Figure 004

Montgomery County, Virginia

March, 2018

Data Sources: Imagery from ESRI Streaming Data 2014, Delineated streams surveyed by Tetra Tech Inc. 2014 to 2017, Transportation data from VITA map layer 2016, Elevation data derived from LIDAR provided by EQT 2016, Soils from NRCS Gridded Soil Survey Geographic (SSURGO) database 2014, Land Use digitized from ESRI World Imagery 2015, Agricultural Area from National Land Cover Dataset 2011.



Legend

- Approximate Location of Water Bar End Treatment
- Permanent Water Bar 10-ft End Treatment
- Permanent Water Bar 15-ft End Treatment
- Permanent Water Bar 20-ft End Treatment
- Sheetflow
- Shallow Concentrated Flow
- Streams
- Stationing
- Alignment Centerline
- Permanent Easement
- Limit of Disturbance
- MLV Site
- Access Road Permanent Easement
- Existing Impervious Surveyed Road Edge
- New/Proposed Impervious Road Edge
- Water Bar Drainage Area
- 100-year Floodplain
- Pond
- Wetland
- Hydrologic Soil Groups
- 100 ft Buffer off of Limits of Disturbance
- Agricultural
- Forest
- Impervious
- Meadow
- Turf/Grass
- Open Water
- Agricultural
- Barren
- Brush
- Meadow
- 10-foot Contour
- 2-foot Contour

NAD 1983 UTM 17N (feet)

1 in = 100 feet

100 50 0 100 Feet



Mountain Valley Pipeline Project

Mountain Valley PIPELINE

Stormwater Drainage Exhibits

Water Bar 58

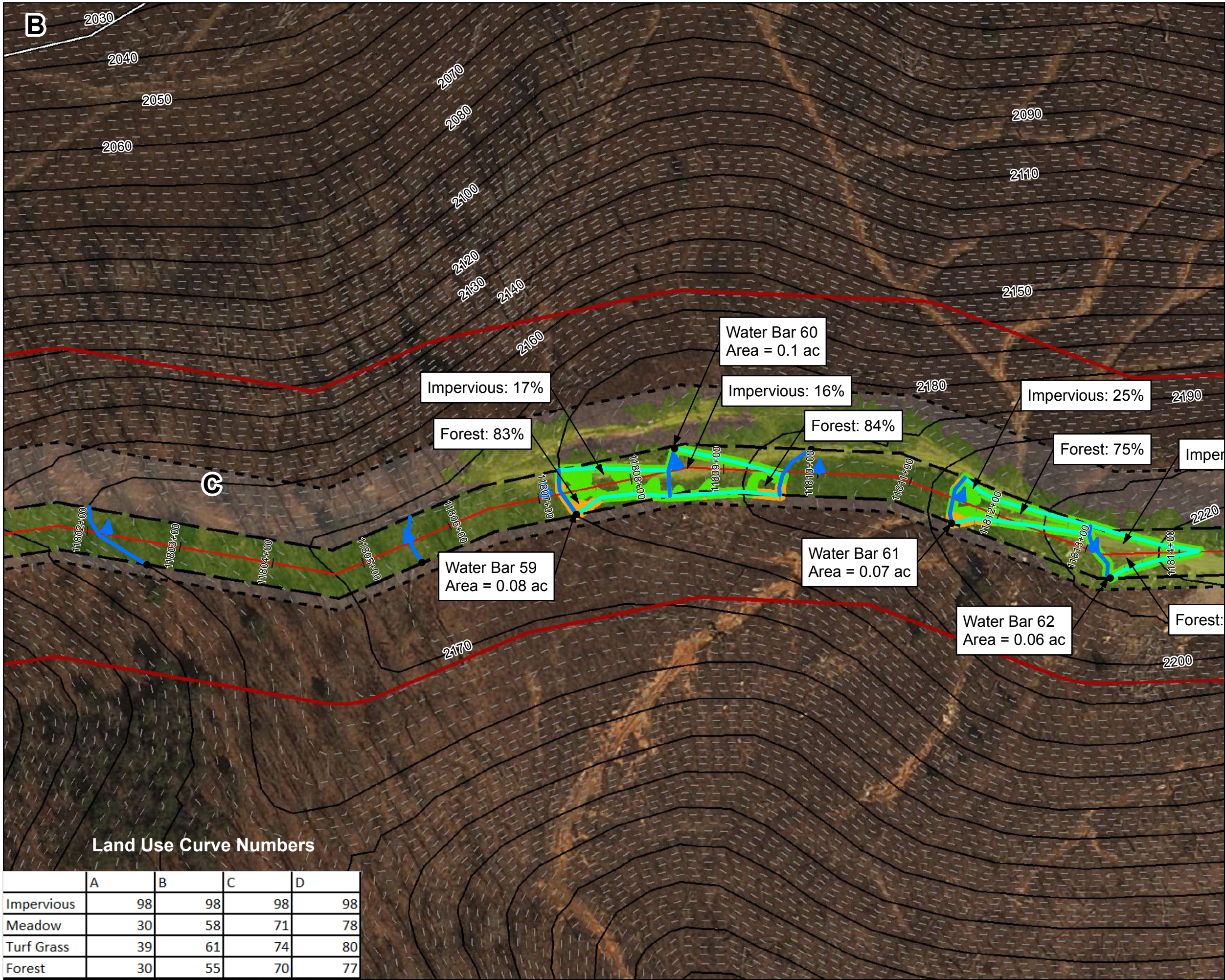
Spread 9

Figure 005

Montgomery County, Virginia

March, 2018

Data Sources: Imagery from ESRI Streaming Data 2014, Delineated streams surveyed by Tetra Tech Inc. 2014 to 2017, Transportation data from VITA map layer 2016, Elevation data derived from LIDAR provided by EQT 2016, Soils from NRCS Gridded Soil Survey Geographic (SSURGO) database 2014, Land Use digitized from ESRI World Imagery 2015, Agricultural Area from National Land Cover Dataset 2011.



Legend

- Approximate Location of Water Bar End Treatment
- Permanent Water Bar 10-ft End Treatment
- Permanent Water Bar 15-ft End Treatment
- Permanent Water Bar 20-ft End Treatment
- Sheetflow
- Shallow Concentrated Flow
- Streams
- Stationing
- Alignment Centerline
- Permanent Easement
- Limit of Disturbance
- MLV Site
- Access Road Permanent Easement
- Existing Impervious
- New/Proposed Impervious Road Edge
- Water Bar Drainage Area
- 100-year Floodplain
- Pond
- Wetland
- Hydrologic Soil Groups
- 100 ft Buffer off of Limits of Disturbance
- Agricultural
- Forest
- Impervious
- Meadow
- Turf/Grass
- Open Water
- Agricultural
- Barren
- Brush
- Meadow
- 10-foot Contour
- 2-foot Contour

NAD 1983 UTM 17N (feet)

1 in = 100 feet

100 50 0 100 Feet

Mountain Valley Pipeline Project

Mountain Valley PIPELINE

Stormwater Drainage Exhibits

Water Bar 59

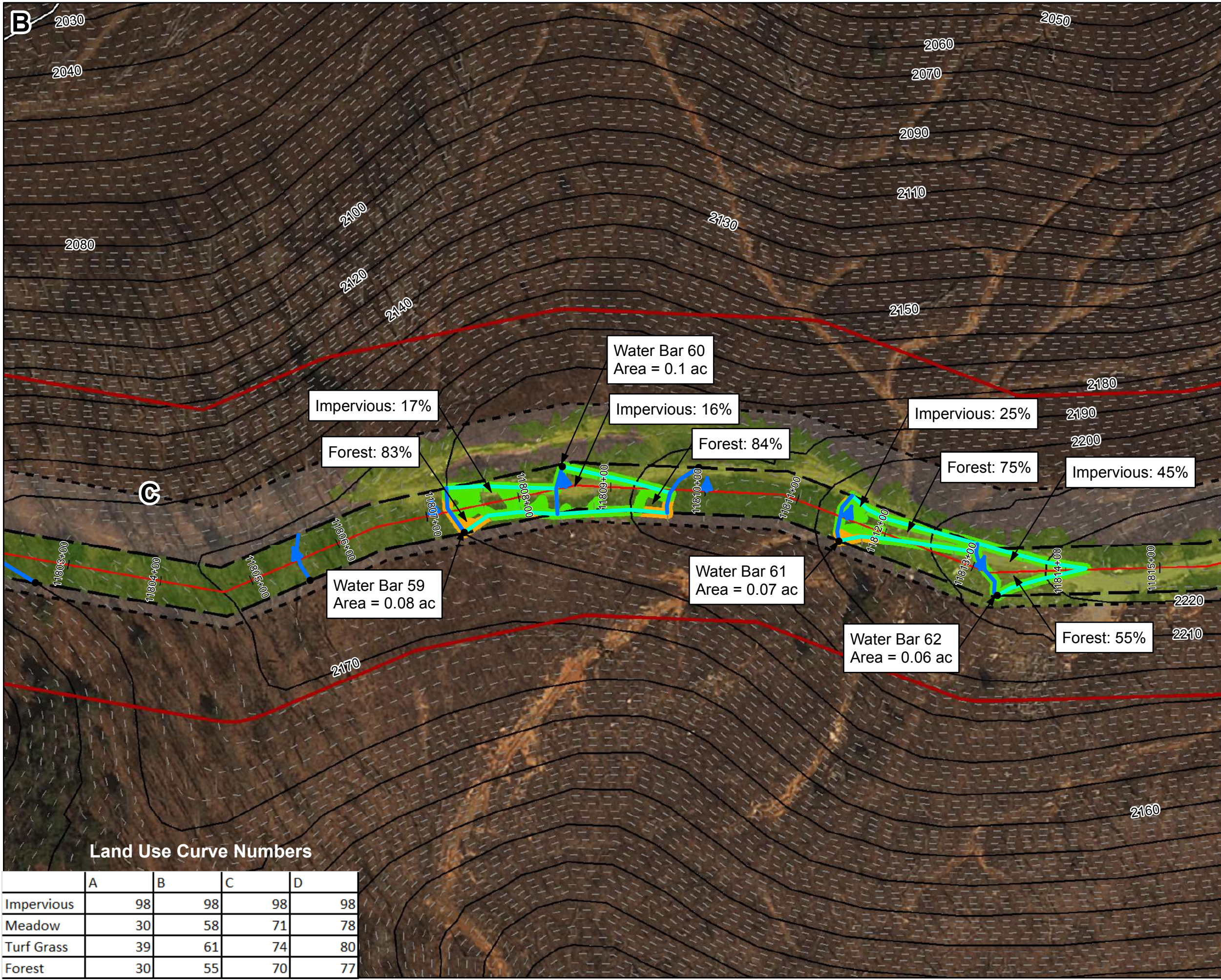
Spread 9

Figure 006

Montgomery County, Virginia

March, 2018

Data Sources: Imagery from ESRI Streaming Data 2014, Delineated streams surveyed by Tetra Tech Inc. 2014 to 2017, Transportation data from VITA map layer 2016, Elevation data derived from LIDAR provided by EQT 2016, Soils from NRCS Gridded Soil Survey Geographic (SSURGO) database 2014, Land Use digitized from ESRI World Imagery 2015, Agricultural Area from National Land Cover Dataset 2011.



Legend

- Approximate Location of Water Bar End Treatment
- Permanent Water Bar 10-ft End Treatment
- Permanent Water Bar 15-ft End Treatment
- Permanent Water Bar 20-ft End Treatment
- Sheetflow
- Shallow Concentrated Flow
- Streams
- Stationing
- Alignment Centerline
- Permanent Easement
- Limit of Disturbance
- MLV Site
- Access Road Permanent Easement
- Existing Impervious Surveyed Road Edge
- New/Proposed Impervious Road Edge
- Water Bar Drainage Area
- 100-year Floodplain
- Pond
- Wetland
- Hydrologic Soil Groups
- 100 ft Buffer off of Limits of Disturbance
- Agricultural
- Forest
- Impervious
- Meadow
- Turf/Grass
- Open Water
- Agricultural
- Barren
- Brush
- Meadow
- 10-foot Contour
- 2-foot Contour

NAD 1983 UTM 17N (feet)

1 in = 100 feet

Mountain Valley Pipeline Project

Stormwater Drainage Exhibits

Water Bar 60 Spread 9

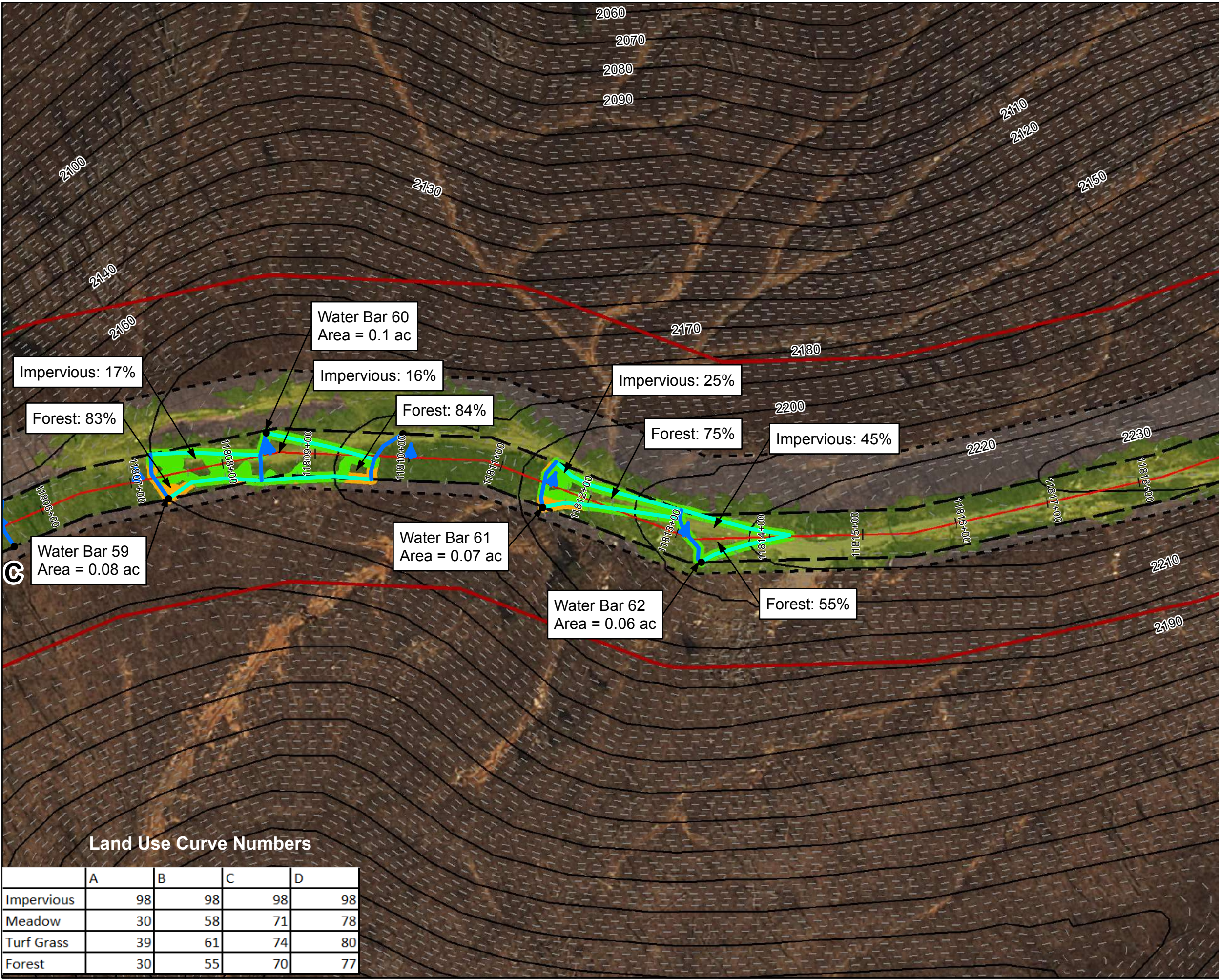
Figure 007
Montgomery County, Virginia

March, 2018

Data Sources: Imagery from ESRI Streaming Data 2014, Delineated streams surveyed by Tetra Tech Inc. 2014 to 2017, Transportation data from VITA map layer 2016, Elevation data derived from LIDAR provided by EQT 2016, Soils from NRCS Gridded Soil Survey Geographic (SSURGO) database 2014, Land Use digitized from ESRI World Imagery 2015, Agricultural Area from National Land Cover Dataset 2011.

Land Use Curve Numbers

	A	B	C	D
Impervious	98	98	98	98
Meadow	30	58	71	78
Turf Grass	39	61	74	80
Forest	30	55	70	77



Legend

●

 Approximate Location of Water Bar End Treatment

—

 Permanent Water Bar 10-ft End Treatment

—

 Permanent Water Bar 15-ft End Treatment

—

 Permanent Water Bar 20-ft End Treatment

→

 Sheetflow

→

 Shallow Concentrated Flow

—

 Streams

—

 Stationing

—

 Alignment Centerline

—

 Permanent Easement

—

 Limit of Disturbance

—

 MLV Site

—

 Access Road Permanent Easement

—

 Existing Impervious Surveyed Road Edge

—

 New/Proposed Impervious Road Edge

—

 Water Bar Drainage Area

—

 100-year Floodplain

Pond

Wetland

Hydrologic Soil Groups

100 ft Buffer off of Limits of Disturbance

Agricultural

Forest

Impervious

Meadow

Turf/Grass

Open Water

Agricultural

Barren

Brush

Meadow

10-foot Contour

2-foot Contour

NAD 1983 UTM 17N (feet)

1 in = 100 feet

100

50

0

100

Feet

N

W

E

S

Mountain Valley

PIPELINE

Stormwater Drainage Exhibits

Water Bar 61

Spread 9

Figure 008

Montgomery County, Virginia

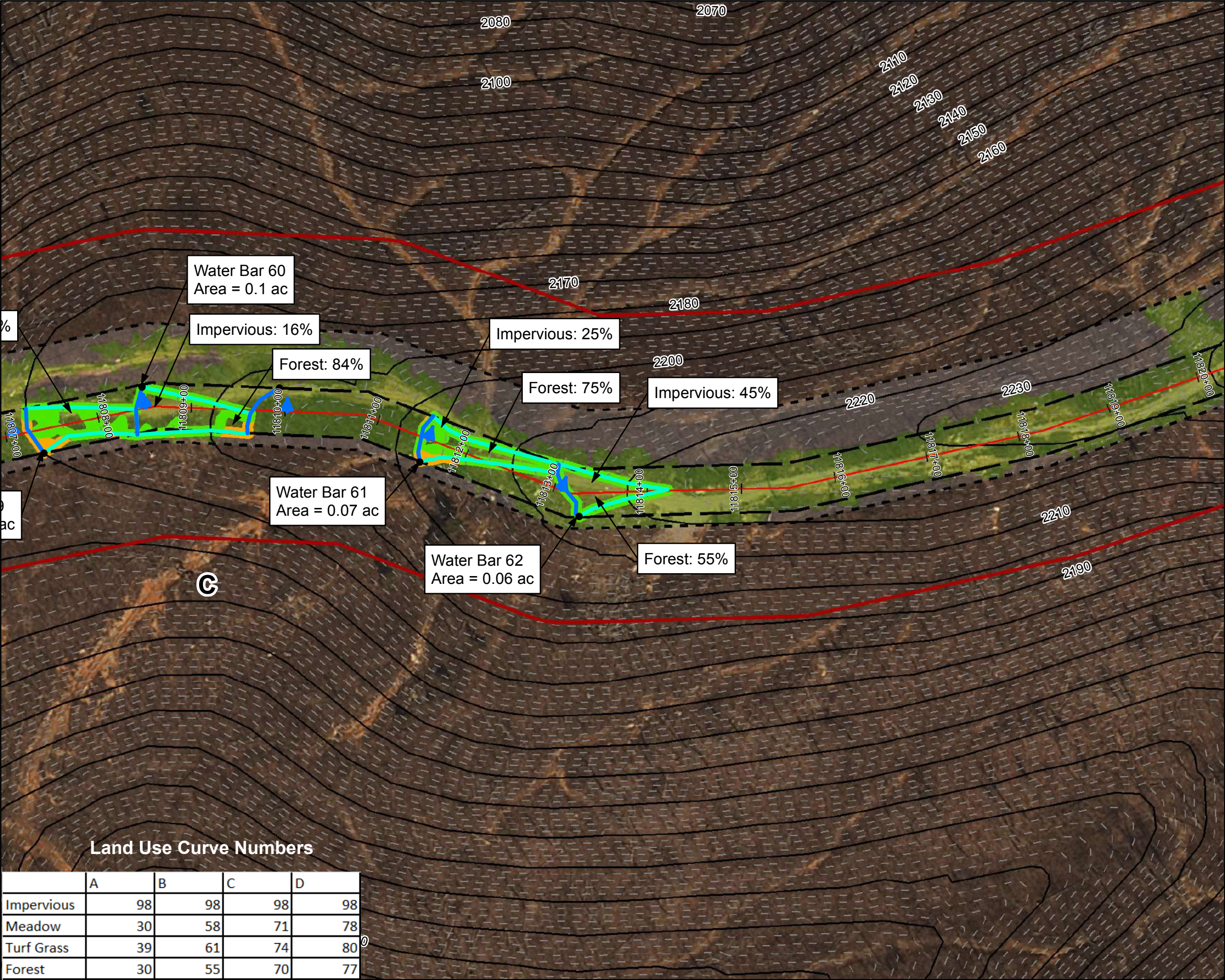
March, 2018

Data Sources: Imagery from ESRI Streaming Data 2014, Delineated streams surveyed by Tetra Tech Inc. 2014 to 2017, Transportation data from VITA map layer 2016, Elevation data derived from LIDAR provided by EQT 2016, Soils from NRCS Gridded Soil Survey Geographic (SSURGO) database 2014, Land Use digitized from ESRI World Imagery 2015, Agricultural Area from National Land Cover Dataset 2011.

Land Use Curve Numbers

	A	B	C	D
Impervious	98	98	98	98
Meadow	30	58	71	78
Turf Grass	39	61	74	80
Forest	30	55	70	77

Document Path: P:\GIS\EQ1_MVP\Mapdocs\Drainage\WXP\MVP_StormwaterDrainage_Exhibit_Spread9.mxd



Legend

- Approximate Location of Water Bar End Treatment
- Permanent Water Bar 10-ft End Treatment
- Permanent Water Bar 15-ft End Treatment
- Permanent Water Bar 20-ft End Treatment
- Sheetflow
- Shallow Concentrated Flow
- Streams
- Stationing
- Alignment Centerline
- Permanent Easement
- Limit of Disturbance
- MLV Site
- Access Road Permanent Easement
- Existing Impervious Surveyed Road Edge
- New/Proposed Impervious Road Edge
- Water Bar Drainage Area
- 100-year Floodplain
- Pond
- Wetland
- Hydrologic Soil Groups
- 100 ft Buffer off of Limits of Disturbance
- Agricultural
- Forest
- Impervious
- Meadow
- Turf/Grass
- Open Water
- Agricultural
- Barren
- Brush
- Meadow
- 10-foot Contour
- 2-foot Contour

NAD 1983 UTM 17N (feet)

1 in = 100 feet

Mountain Valley Pipeline Project

Stormwater Drainage Exhibits

Water Bar 62

Spread 9

Figure 009

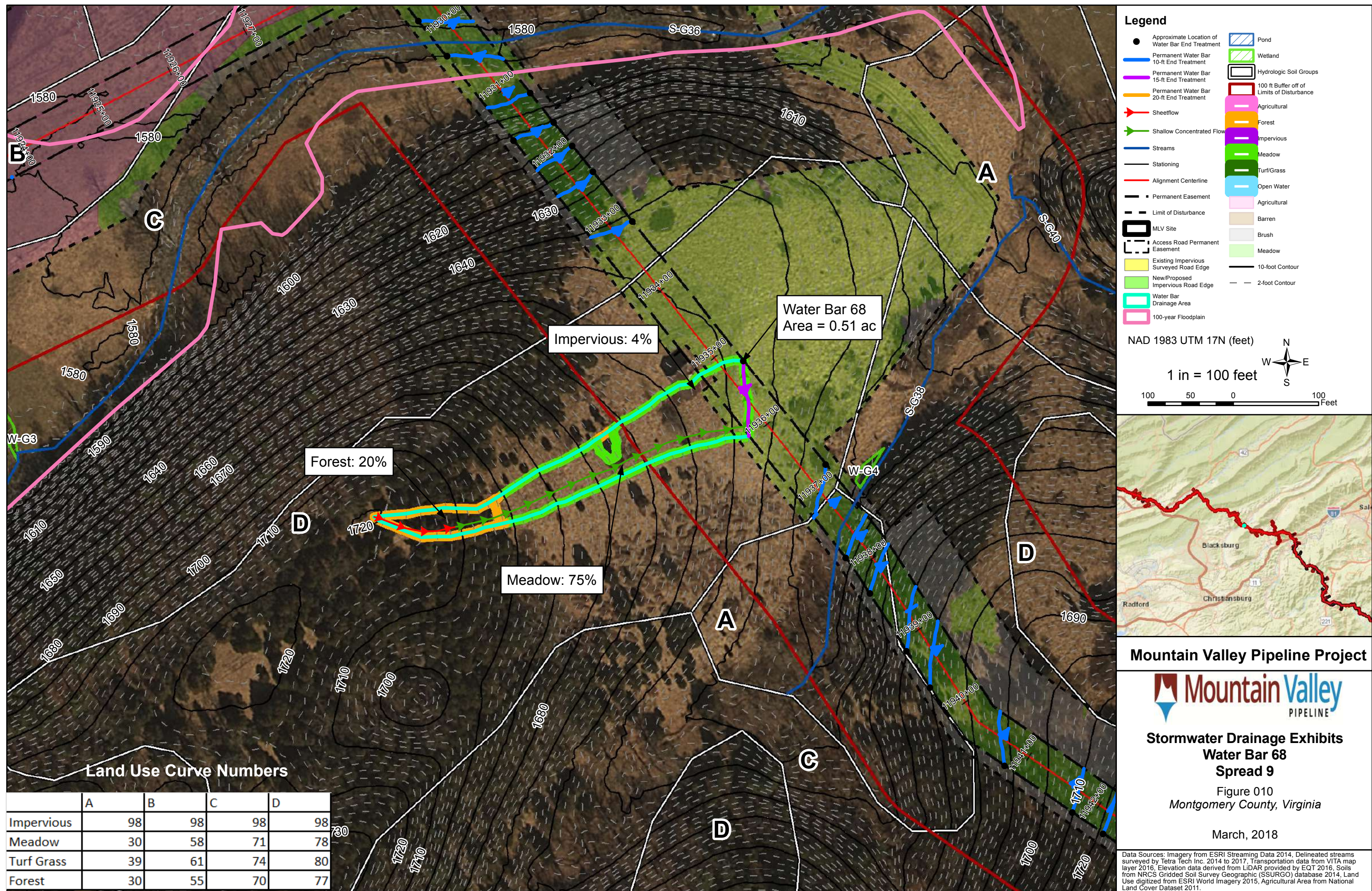
Montgomery County, Virginia

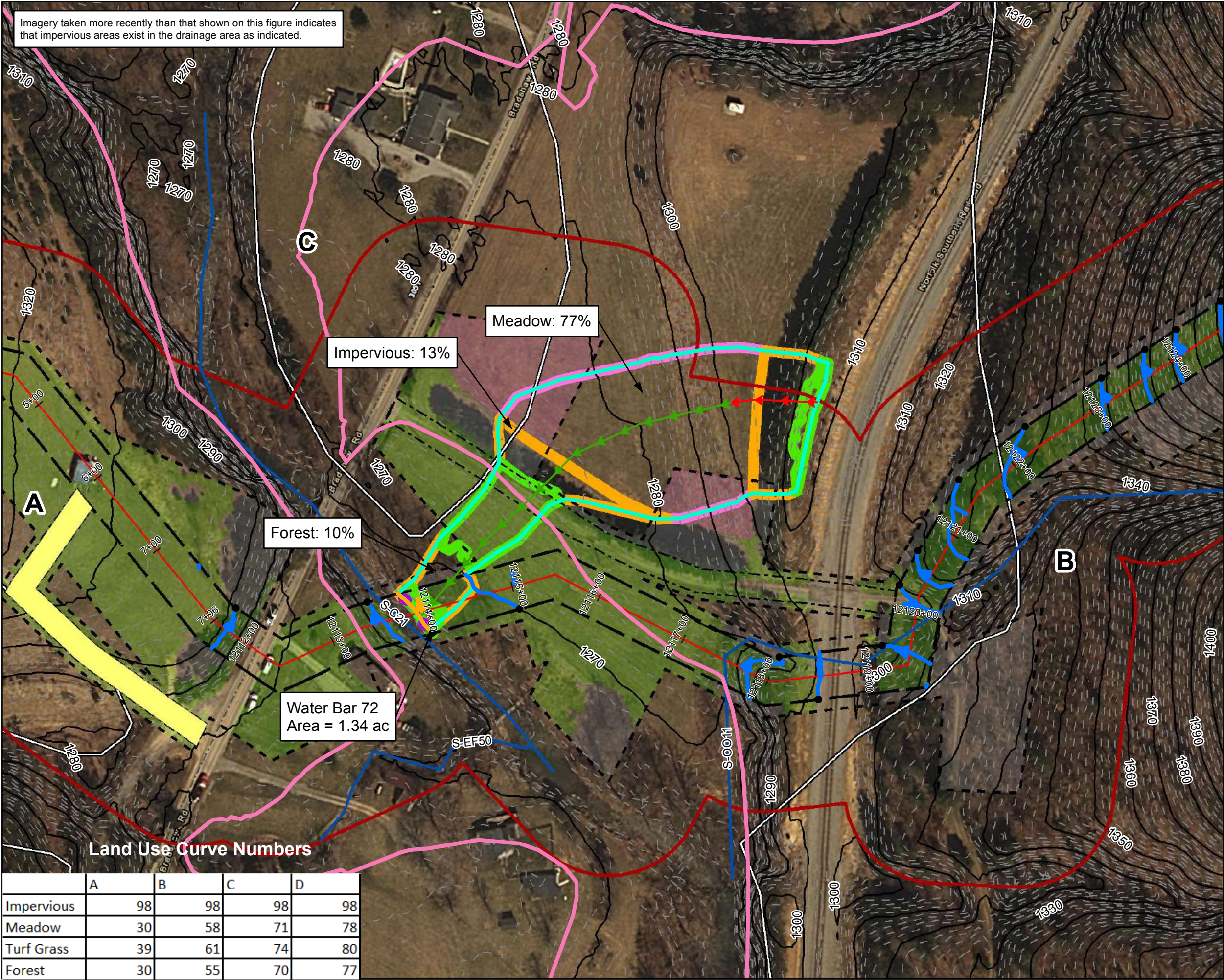
March, 2018

Data Sources: Imagery from ESRI Streaming Data 2014, Delineated streams surveyed by Tetra Tech Inc. 2014 to 2017, Transportation data from VITA map layer 2016, Elevation data derived from LIDAR provided by EQT 2016, Soils from NRCS Gridded Soil Survey Geographic (SSURGO) database 2014, Land Use digitized from ESRI World Imagery 2015, Agricultural Area from National Land Cover Dataset 2011.

Land Use Curve Numbers

	A	B	C	D
Impervious	98	98	98	98
Meadow	30	58	71	78
Turf Grass	39	61	74	80
Forest	30	55	70	77





Legend

- Approximate Location of Water Bar End Treatment
- Permanent Water Bar 10-ft End Treatment
- Permanent Water Bar 15-ft End Treatment
- Permanent Water Bar 20-ft End Treatment
- Sheetflow
- Shallow Concentrated Flow
- Streams
- Stationing
- Alignment Centerline
- Permanent Easement
- Limit of Disturbance
- MLV Site
- Access Road Permanent Easement
- Existing Impervious Surveyed Road Edge
- New/Proposed Impervious Road Edge
- Water Bar Drainage Area
- 100-year Floodplain
- Pond
- Wetland
- Hydrologic Soil Groups
- 100 ft Buffer off of Limits of Disturbance
- Agricultural
- Forest
- Impervious
- Meadow
- Turf/Grass
- Open Water
- Agricultural
- Barren
- Brush
- Meadow
- 10-foot Contour
- 2-foot Contour

NAD 1983 UTM 17N (feet)

1 in = 100 feet

100 50 0 100 Feet

Mountain Valley Pipeline Project

Mountain Valley PIPELINE

Stormwater Drainage Exhibits

Water Bar 72

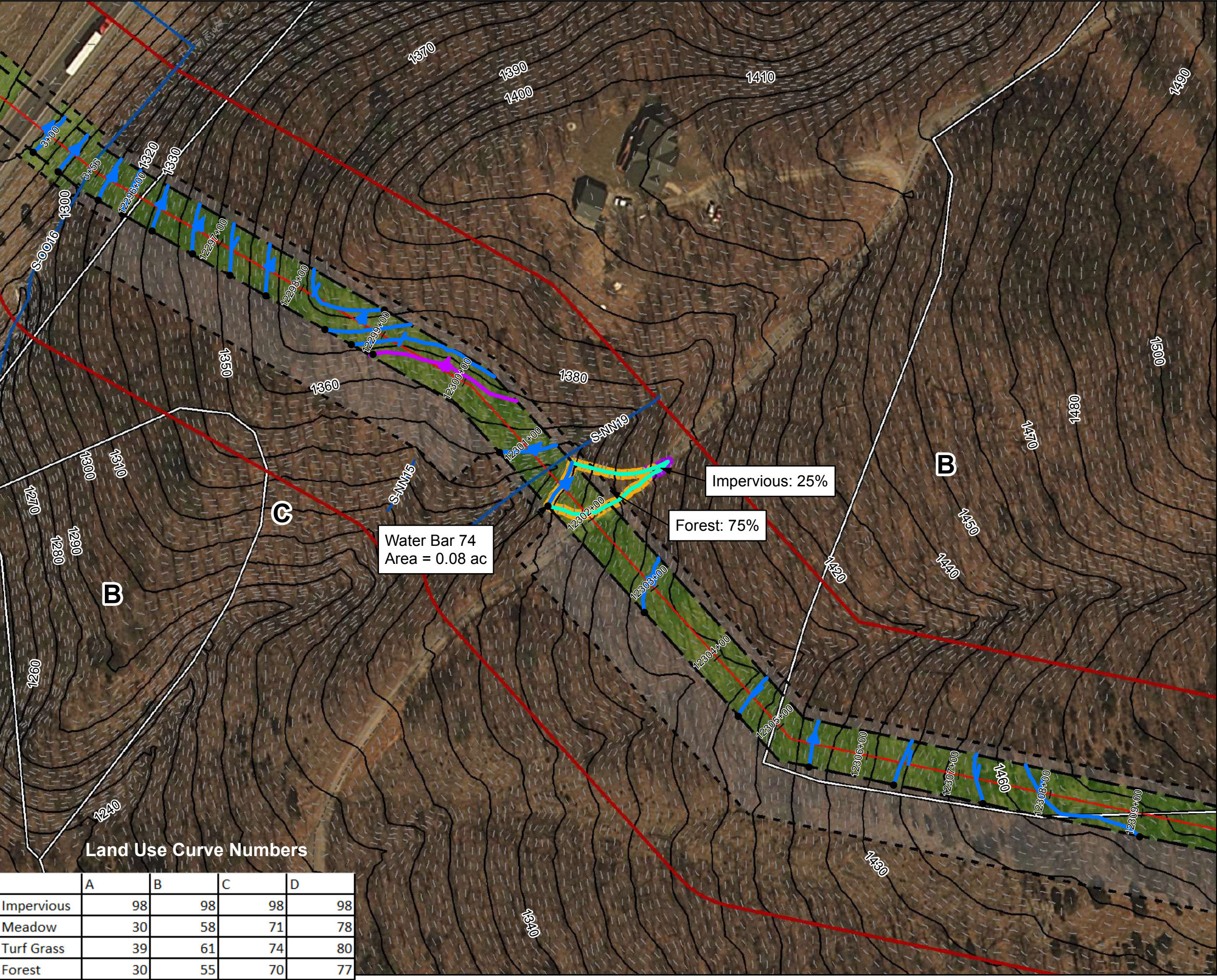
Spread 9

Figure 011

Montgomery County, Virginia

March, 2018

Data Sources: Imagery from ESRI Streaming Data 2014, Delineated streams surveyed by Tetra Tech Inc. 2014 to 2017, Transportation data from VITA map layer 2016, Elevation data derived from LIDAR provided by EQT 2016, Soils from NRCS Gridded Soil Survey Geographic (SSURGO) database 2014, Land Use digitized from ESRI World Imagery 2015, Agricultural Area from National Land Cover Dataset 2011.



Legend

●

 Approximate Location of Water Bar End Treatment

Permanent Water Bar 10-ft End Treatment

Permanent Water Bar 15-ft End Treatment

Permanent Water Bar 20-ft End Treatment

Sheetflow

Shallow Concentrated Flow

Streams

Stationing

Alignment Centerline

Permanent Easement

Limit of Disturbance

MLV Site

Access Road Permanent Easement

Existing Impervious

Surveyed Road Edge

New/Proposed Impervious Road Edge

Water Bar Drainage Area

100-year Floodplain

Pond

Wetland

Hydrologic Soil Groups

100 ft Buffer off of Limits of Disturbance

Agricultural

Forest

Impervious

Meadow

Turf/Grass

Open Water

Agricultural

Barren

Brush

Meadow

10-foot Contour

2-foot Contour

NAD 1983 UTM 17N (feet)

1 in = 100 feet

100

50

0

100

Feet

N

E

S

W

Mountain Valley Pipeline Project

Stormwater Drainage Exhibits

Water Bar 74

Spread 9

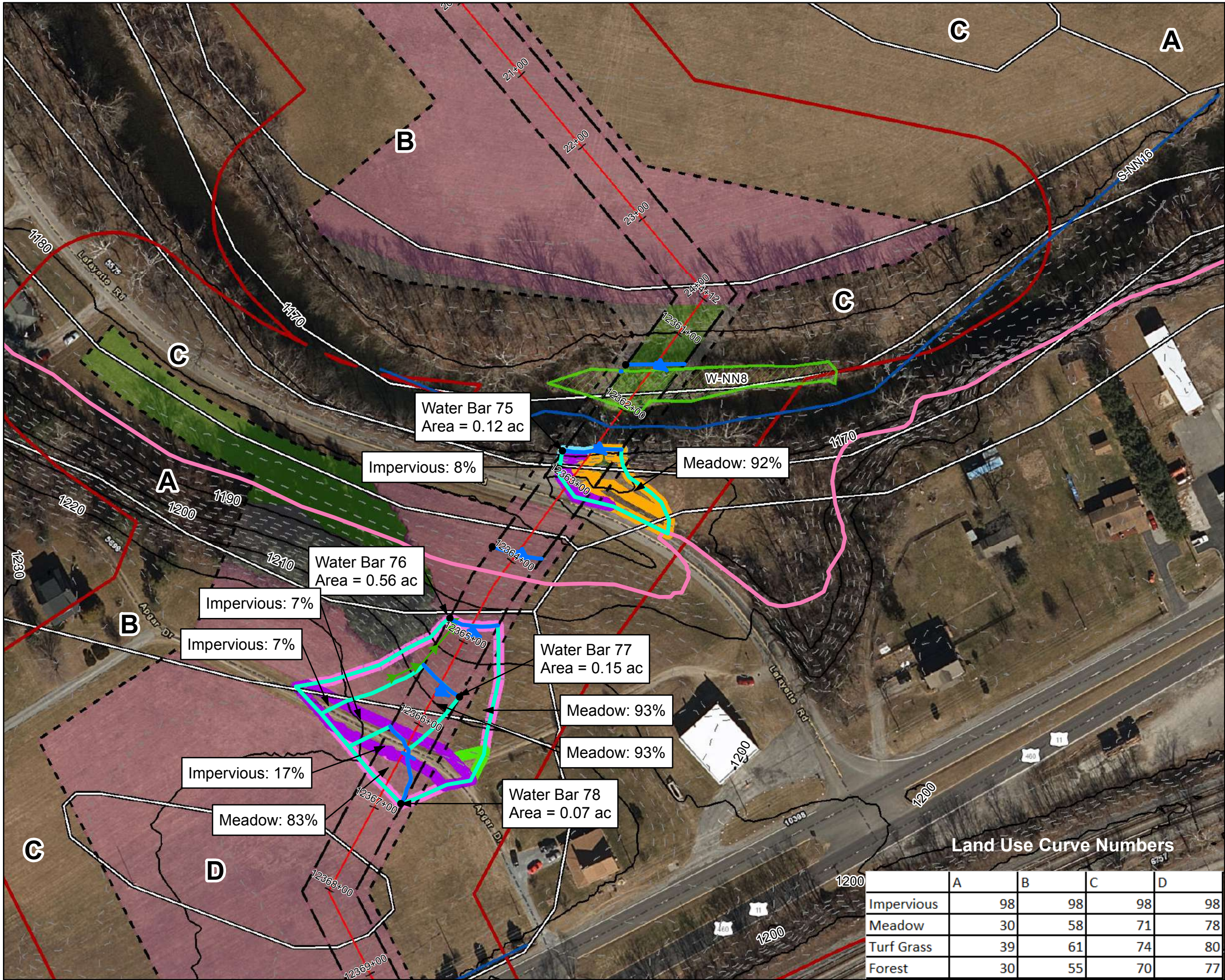
Figure 012

Montgomery County, Virginia

March, 2018

Data Sources: Imagery from ESRI Streaming Data 2014, Delineated streams surveyed by Tetra Tech Inc. 2014 to 2017, Transportation data from VITA map layer 2016, Elevation data derived from LIDAR provided by EQT 2016, Soils from NRCS Gridded Soil Survey Geographic (SSURGO) database 2014, Land Use digitized from ESRI World Imagery 2015, Agricultural Area from National Land Cover Dataset 2011.

	A	B	C	D
Impervious	98	98	98	98
Meadow	30	58	71	78
Turf Grass	39	61	74	80
Forest	30	55	70	77



Legend

- Approximate Location of Water Bar End Treatment
- Permanent Water Bar 10-ft End Treatment
- Permanent Water Bar 15-ft End Treatment
- Permanent Water Bar 20-ft End Treatment
- Sheetflow
- Shallow Concentrated Flow
- Streams
- Stationing
- Alignment Centerline
- Permanent Easement
- Limit of Disturbance
- MLV Site
- Access Road Permanent Easement
- Existing Impervious Surveyed Road Edge
- New/Proposed Impervious Road Edge
- Water Bar Drainage Area
- 100-year Floodplain
- Pond
- Wetland
- Hydrologic Soil Groups
- 100 ft Buffer off of Limits of Disturbance
- Agricultural
- Forest
- Impervious
- Meadow
- Turf/Grass
- Open Water
- Agricultural
- Barren
- Brush
- Meadow
- 10-foot Contour
- 2-foot Contour

NAD 1983 UTM 17N (feet)

1 in = 100 feet

100 50 0 100 Feet



Mountain Valley Pipeline Project

Stormwater Drainage Exhibits

Water Bar 75

Spread 9

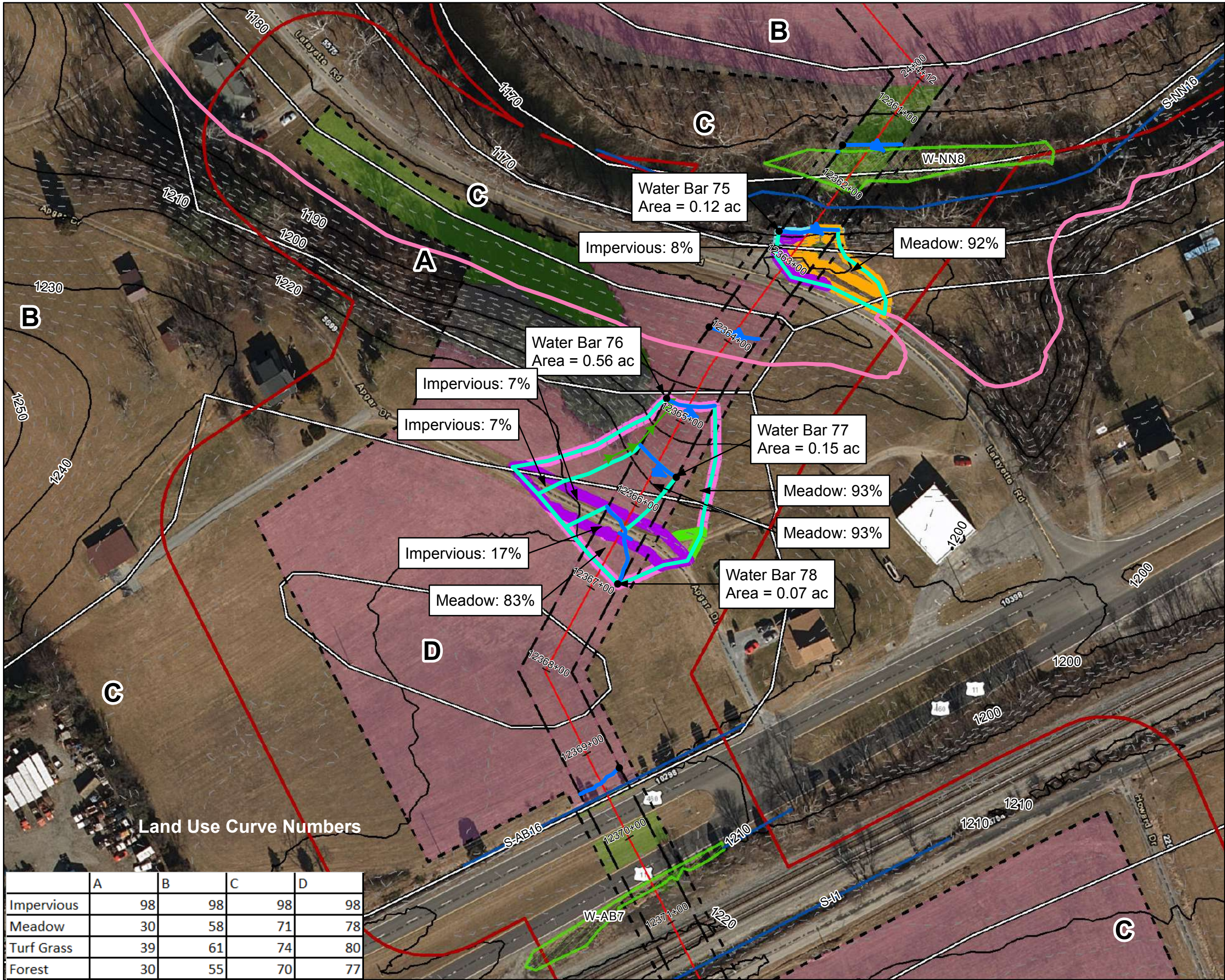
Figure 013

Montgomery County, Virginia

March, 2018

	A	B	C	D
Impervious	98	98	98	98
Meadow	30	58	71	78
Turf Grass	39	61	74	80
Forest	30	55	70	77

Data Sources: Imagery from ESRI Streaming Data 2014, Delineated streams surveyed by Tetra Tech Inc. 2014 to 2017, Transportation data from VITA map layer 2016, Elevation data derived from LIDAR provided by EQT 2016, Soils from NRCS Gridded Soil Survey Geographic (SSURGO) database 2014, Land Use digitized from ESRI World Imagery 2015, Agricultural Area from National Land Cover Dataset 2011.



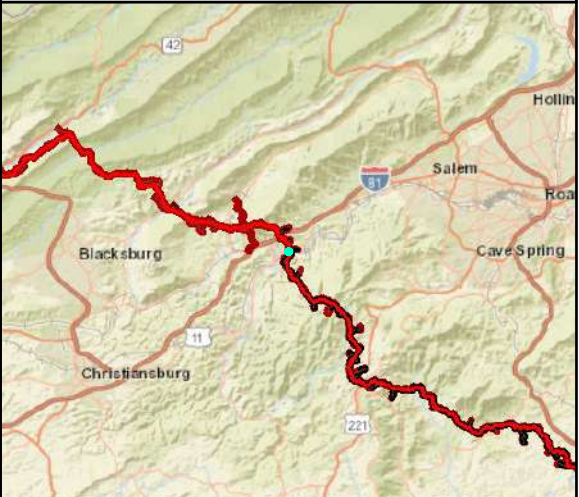
Legend

- Approximate Location of Water Bar End Treatment
- Permanent Water Bar 10-ft End Treatment
- Permanent Water Bar 15-ft End Treatment
- Permanent Water Bar 20-ft End Treatment
- Sheetflow
- Shallow Concentrated Flow
- Streams
- Stationing
- Alignment Centerline
- Permanent Easement
- Limit of Disturbance
- MLV Site
- Access Road Permanent Easement
- Existing Impervious Surveyed Road Edge
- New/Proposed Impervious Road Edge
- Water Bar Drainage Area
- 100-year Floodplain
- Pond
- Wetland
- Hydrologic Soil Groups
- 100 ft Buffer off of Limits of Disturbance
- Agricultural
- Forest
- Impervious
- Meadow
- Turf/Grass
- Open Water
- Agricultural
- Barren
- Brush
- Meadow
- 10-foot Contour
- 2-foot Contour

NAD 1983 UTM 17N (feet)

1 in = 100 feet

100 50 0 100 Feet



Mountain Valley Pipeline Project



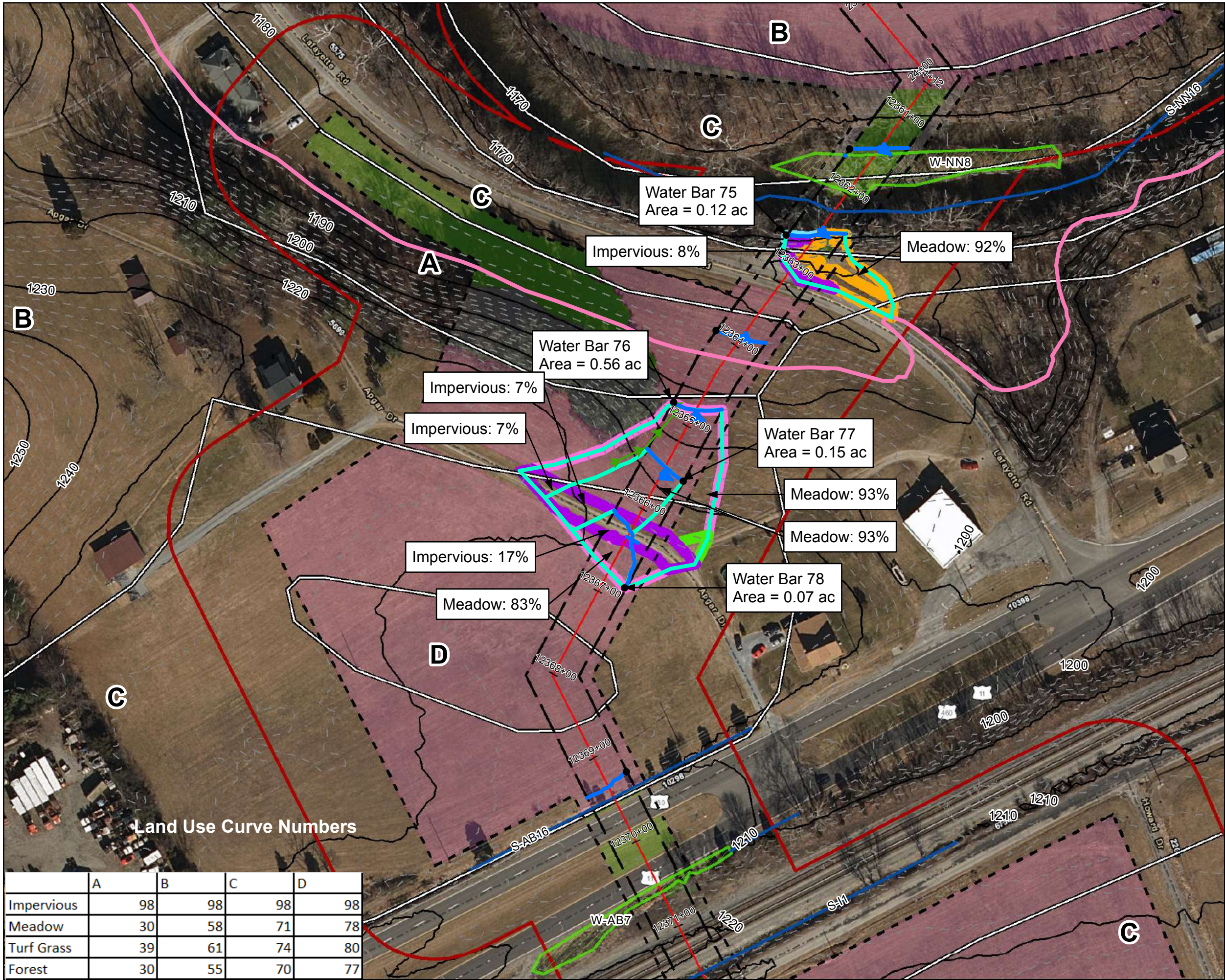
Stormwater Drainage Exhibits
Water Bar 76
Spread 9

Figure 014
Montgomery County, Virginia

March, 2018

Data Sources: Imagery from ESRI Streaming Data 2014, Delineated streams surveyed by Tetra Tech Inc. 2014 to 2017, Transportation data from VITA map layer 2016, Elevation data derived from LIDAR provided by EQT 2016, Soils from NRCS Gridded Soil Survey Geographic (SSURGO) database 2014, Land Use digitized from ESRI World Imagery 2015, Agricultural Area from National Land Cover Dataset 2011.

	A	B	C	D
Impervious	98	98	98	98
Meadow	30	58	71	78
Turf Grass	39	61	74	80
Forest	30	55	70	77



Legend

- Approximate Location of Water Bar End Treatment
- Permanent Water Bar 10-ft End Treatment
- Permanent Water Bar 15-ft End Treatment
- Permanent Water Bar 20-ft End Treatment
- Sheetflow
- Shallow Concentrated Flow
- Streams
- Stationing
- Alignment Centerline
- Permanent Easement
- Limit of Disturbance
- MLV Site
- Access Road Permanent Easement
- Existing Impervious
- New/Proposed Impervious Road Edge
- Water Bar Drainage Area
- 100-year Floodplain
- Pond
- Wetland
- Hydrologic Soil Groups
- 100 ft Buffer off of Limits of Disturbance
- Agricultural
- Forest
- Impervious
- Meadow
- Turf/Grass
- Open Water
- Agricultural
- Barren
- Brush
- Meadow
- 10-foot Contour
- 2-foot Contour

NAD 1983 UTM 17N (feet)
1 in = 100 feet

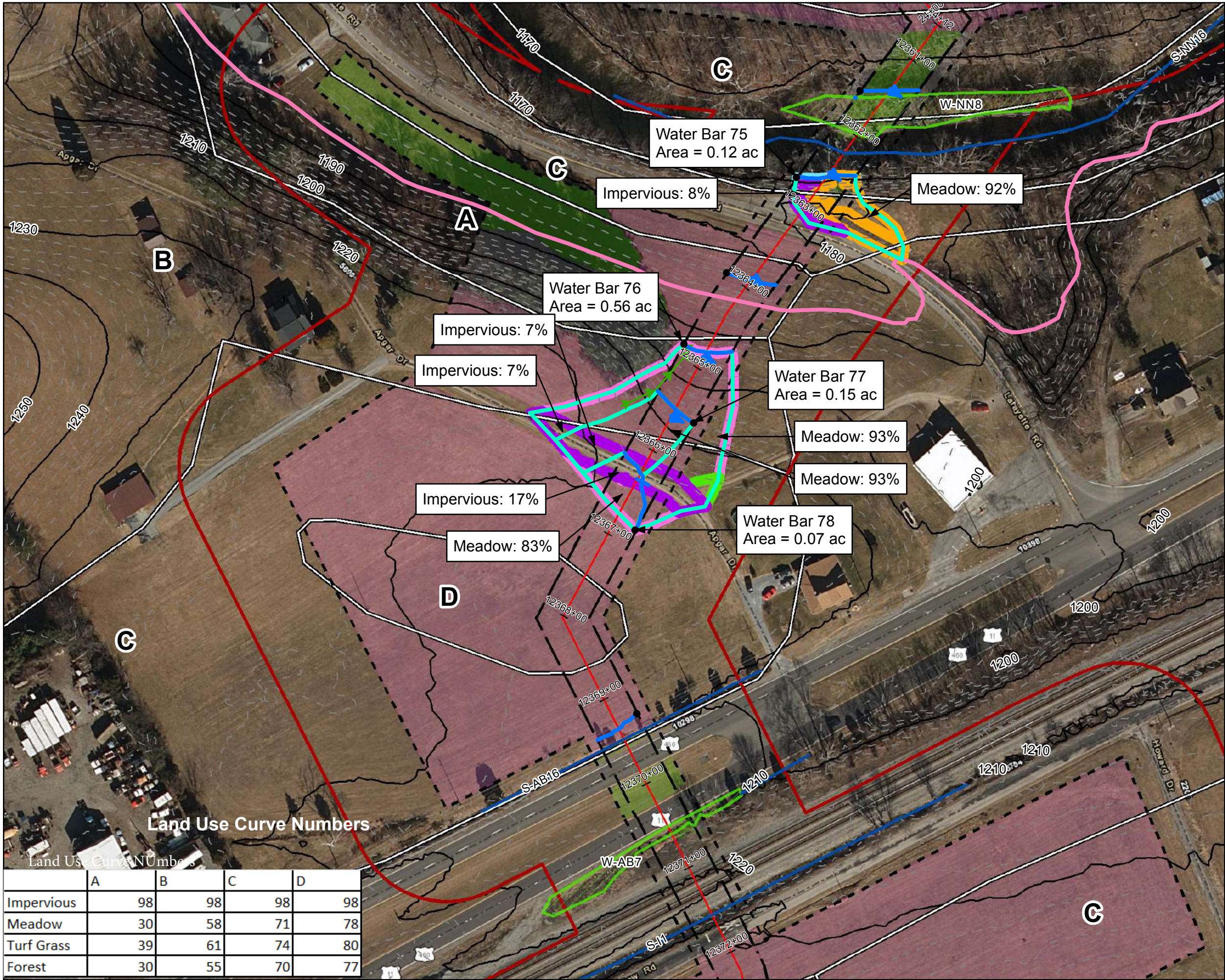


Mountain Valley Pipeline Project

Stormwater Drainage Exhibits
Water Bar 77
Spread 9
Figure 015
Montgomery County, Virginia
March, 2018

Data Sources: Imagery from ESRI Streaming Data 2014, Delineated streams surveyed by Tetra Tech Inc. 2014 to 2017, Transportation data from VITA map layer 2016, Elevation data derived from LIDAR provided by EQT 2016, Soils from NRCS Gridded Soil Survey Geographic (SSURGO) database 2014, Land Use digitized from ESRI World Imagery 2015, Agricultural Area from National Land Cover Dataset 2011.

	A	B	C	D
Impervious	98	98	98	98
Meadow	30	58	71	78
Turf Grass	39	61	74	80
Forest	30	55	70	77



Legend

- Approximate Location of Water Bar End Treatment
- Permanent Water Bar 10-ft End Treatment
- Permanent Water Bar 15-ft End Treatment
- Permanent Water Bar 20-ft End Treatment
- Sheetflow
- Shallow Concentrated Flow
- Streams
- Stationing
- Alignment Centerline
- Permanent Easement
- Limit of Disturbance
- MLV Site
- Access Road Permanent Easement
- Existing Impervious
- New/Proposed Impervious Road Edge
- Water Bar Drainage Area
- 100-year Floodplain
- Pond
- Wetland
- Hydrologic Soil Groups
- 100 ft Buffer off of Limits of Disturbance
- Agricultural
- Forest
- Impervious
- Meadow
- Turf/Grass
- Open Water
- Agricultural
- Barren
- Brush
- Meadow
- 10-foot Contour
- 2-foot Contour

NAD 1983 UTM 17N (feet)

1 in = 100 feet

100 50 0 100 Feet



Mountain Valley Pipeline Project

Mountain Valley PIPELINE

Stormwater Drainage Exhibits

Water Bar 78

Spread 9

Figure 016

Montgomery County, Virginia

March, 2018

Data Sources: Imagery from ESRI Streaming Data 2014, Delineated streams surveyed by Tetra Tech Inc. 2014 to 2017, Transportation data from VITA map layer 2016, Elevation data derived from LIDAR provided by EQT 2016, Soils from NRCS Gridded Soil Survey Geographic (SSURGO) database 2014, Land Use digitized from ESRI World Imagery 2015, Agricultural Area from National Land Cover Dataset 2011.