



MULTI-FINGER CALIPER (MFC) WITH BUILT-IN MOTORIZED CENTRALIZERS

Multi-Finger Caliper tools provide direct, accurate and reliable measurements of internal tubing and casing diameters. Used in both drilling and production environments, applications include the evaluation of corrosion, erosion, wear, bending, buckling, pits, holes and other defects with high accuracy.

Measuring fingers move radially along the inner casing or tubing wall, detecting any diameter change. This produces a high resolution record of the tubular geometry which can be viewed and presented as a conventional log, a cross section, or a 3-D color enhanced image. The Multi-Finger Caliper may also be used to measure the buildup of scale, paraffin or other mineral deposits in the wellbore. Auxiliary measurements include an integral wellbore temperature probe, along with deviation and relative bearing information. A range of instrument diameters with different fingers arrays are available to provide optimised measurements in tubulars ranging from 2-3/8 in. to 20 in. diameter.

APPLICATIONS & FEATURES

- Available in 24, 40, and 56 fingers
- Extended fingers available
- Combinable with all Pegasus Series Tools
- Compatible with PegasusStar Cased Hole Logging Platform
- Has Built-in Wellbore Temperature and 3-axis accelerometer able to provide crucial information about the Well Conditions including: Temperature, Deviation and Finger position
- ViewWell™ Compatible for analysis and reporting



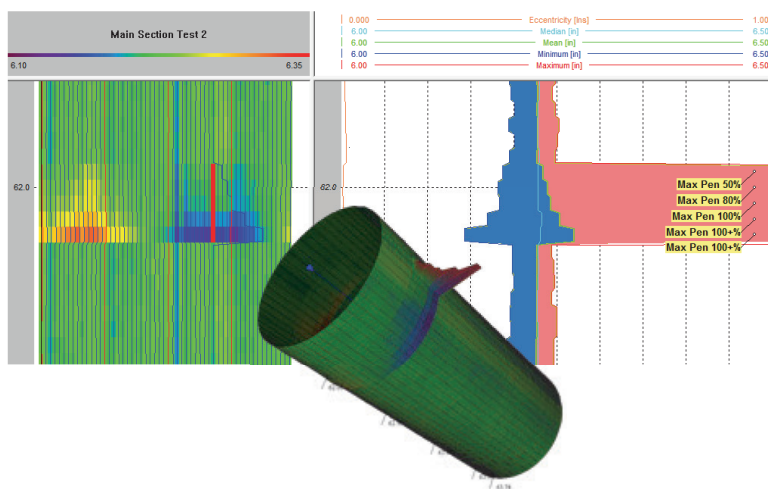
MFC24C-H



MFC40C-B



MFC56C-G



MFC 3D VIEW



MULTI-FINGER CALIPER (MFC) WITH BUILT-IN MOTORIZED CENTRALIZERS

SPECIFICATIONS

		MFC24C-H	MFC40C-B	MFC56C-G
GENERAL SPECS		P/N 1.01.03.300003661	P/N 1.01.03.100520911	P/N 1.01.03.100520561
Maximum Pressure		15000 PSI (103 Mpa)		
Maximum Temperature		350 °F (175 °C)		
Diameter		1.69 in. (43 mm)	2.87 in. (73 mm)	3.54 in. (90 mm)
Makeup Length		69.25 in. (1.759 m)	77.95 in. (1.98 m)	81.85 in.(2.079 m)
Shipping Length				
Weight		26.46 lbs (12kg)	79.4 lbs (35.5kg)	112.4 lbs (51kg)
Max Tensile Strength		10000lbf		
Material		17-4 SS & Al-Bronze		
EXTENDED FINGER				
Extended Finger		EF kit(Bigger OD)	XF (Same OD)	
CALIPER MEASUREMENT				
Number of arms		24 arms	40 arms	56 arms
STD	Minimum, Diameter	2 in. (51 mm)	3.5 in. (89 mm)	4 in. (101.6 mm)
	Maximum, Diameter	7 in. (178 mm)	8-1/4 in. (209.6 mm)	9-5/8 in. (244.5 mm)
	Accuracy, Radial	±0.02 in. (0.5 mm)	±0.02 in. (0.5 mm)	±0.02 in. (0. mm)
	Resolution	0.0039 in (0.1mm)	0.0039 in (0.1mm)	0.0039 in (0.1mm)
	Caliper Measure	33.92 in.	27.63 in.	29.17 in.
EF/XF	Minimum, Diameter	2 in. (51 mm)	5 in. (127 mm)	7.5 in. (190.4 mm)
	Maximum, Diameter	9-5/8 in. (244.5 mm)	9-5/8 in. (244.5 mm)	13-3/8 in. (340 mm)
	Accuracy, Radial	±0.035 in. (0.89 mm)	±0.035 in. (0.89 mm)	±0.035 in. (0.89 mm)
	Resolution	0.005 in (0.13mm)	0.005 in (0.13mm)	0.005 in (0.13mm)
	Caliper Measure Point	36.97 in	27.33 in	27.31 in
EXF	Minimum, Diameter	N/A		8.35 in. (212.2 mm)
	Maximum, Diameter			20 in. (508 mm)
	Accuracy, Radial			±0.045 in. (1.14 mm)
	Resolution			0.005 in (0.13mm)
	Caliper Measure			23.56in.
Sensor type		Linear Displacement sensor		
WELLBORE TEMPERATURE MEASUREMENT				
Minimum		N/A	13° F (-25° C)	
Maximum			347 °F (175°C)	
Accuracy			± 2° C	
INCLINATION MEASUREMENT				
Minimum		0°		
Maximum		180°		
Accuracy		±5.0°		
RELATIVE AZIMUTH MEASUREMENT				
Minimum		0°		
Maximum		360°		
Accuracy		±5.0° (Dev≥5.0°)		
VERTICAL RESOLUTION				
Typical Logging Speed		30 ft/min (9.14 m/min)		
Vertical Resolution @ 600m/h		0.12 in. (3.05mm)		
BUILDIN CENTRALIZER				
Buildin Centralizer		Lower	Upper/Lower	