



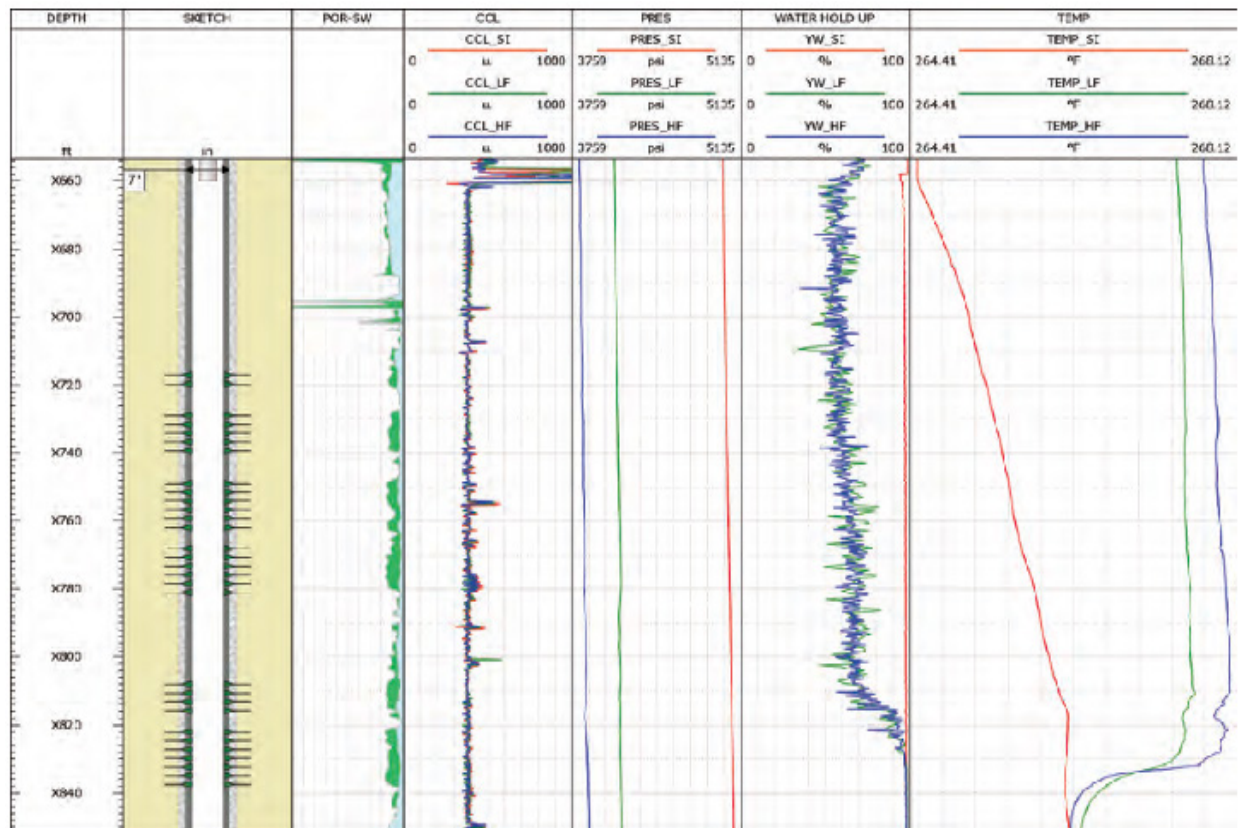
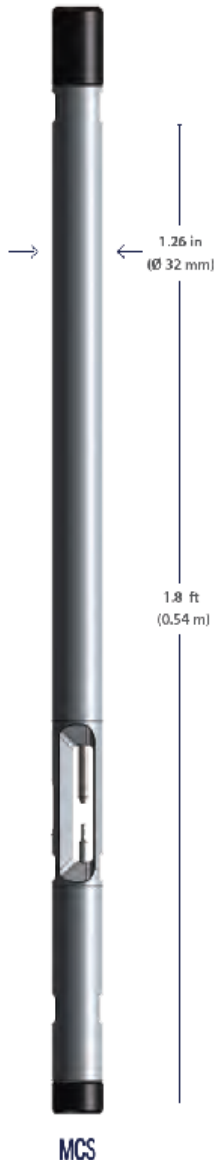
PRESSURE TEMPERATURE CAPACITANCE CCL (MCS)

MCS is a memory tool combining four sensors into a single compact module. The instrument measures pressure, temperature, capacitance water hold-up and casing collar locator (CCL).

FEATURES & APPLICATIONS

- Correlation of cased hole logs between runs and wells.
- Leak Detection with high-resolution temperature Log.
- Identification of production and injection zones.
- Location of top of cement.
- Low flow rate profiling when coupled with temperature simulation analysis.
- Water Hold-Up measures the dielectric constant of the surrounding borehole fluid to determine the water holdup.
- Compact by combining multiple sensors into one tool.
- Record the value of the sensors in the device memory.
- Memory acquisition can be triggered either at a specific time or when exceeding specific pressure.

LOG EXAMPLE





PRESSURE TEMPERATURE CAPACITANCE CCL (MCS)

SPECIFICATIONS

		MCS32J-B
		P/N 1.01.07.300004662
GENERAL SPECS		
Maximum Operating Pressure		15,000PSI (103 MPa)
Maximum Operating Temperature		302°F (150°C)
Instrument Diameter		1.26 in (32mm)
Length		1.80 ft (0.33m)
Weight		6.60 lbs (3.0 kg)
Tensile strength		15000 lbs
Compression strength		9000 lbs
Housing Material		Titanium
PRESSURE SENSOR		
Accuracy		0.02% FS
Resolution		0.0001% FS
TEMPERATURE SENSOR		
Accuracy		0.1°C
Resolution		0.001°C
Response Time		0.4 sec
CCL SECTION		
Measurement Range		0 to 3.3V
Resolution		+ / - 2 uV
SNR (Signal to Noise Ratio)		14 dB
HOLD UP		
Resolution of Holdup		1%
Accuracy of Holdup		±2%
Range of Holdup		0~100%
MEMORY		
Capacity		100 hour (@ 1sample/sec)
Sampling		0.5 to 255 sec