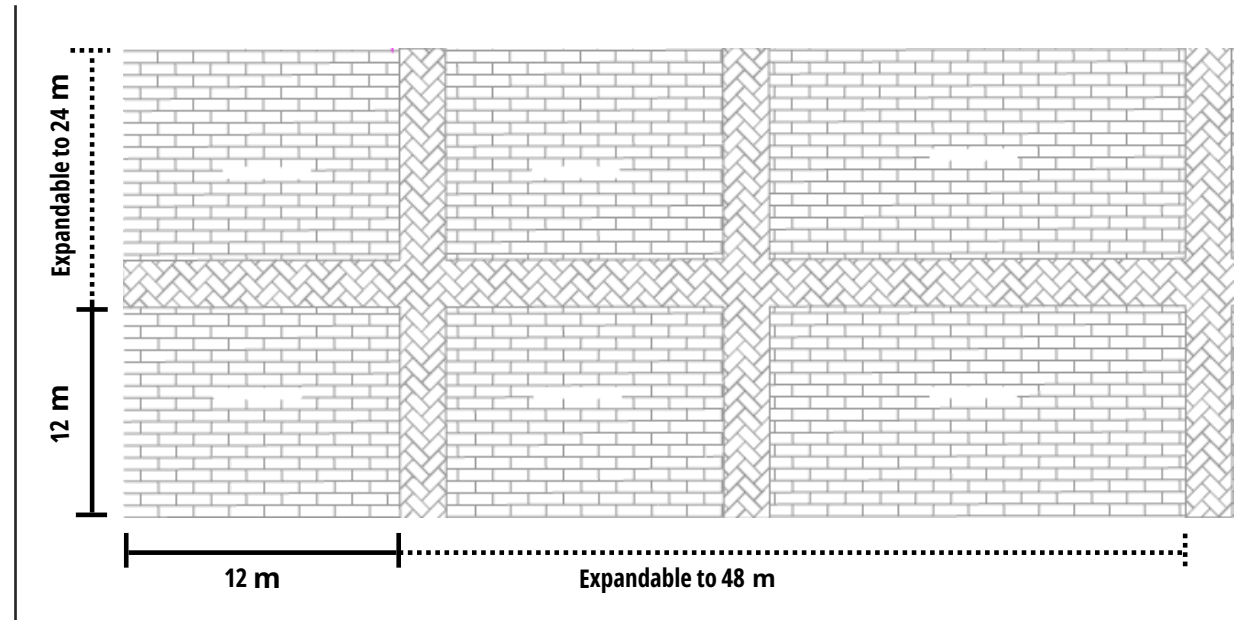
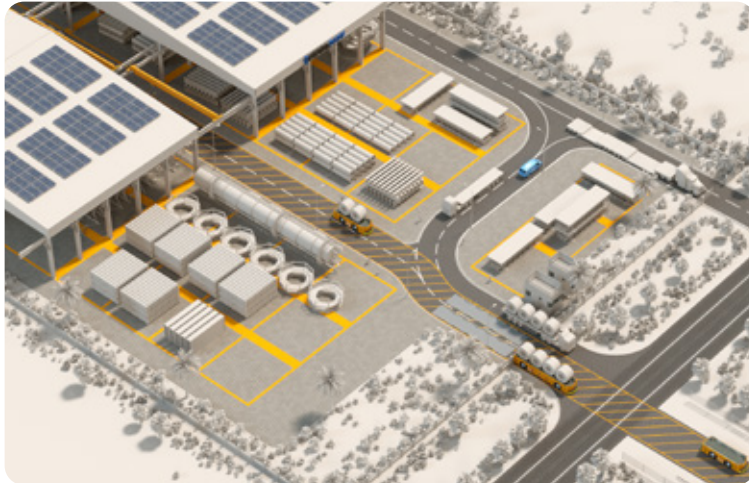




Managed & Operated by  
Steinweg Group



● Access to entire park facilities and services such as all the **23 Processing Lines, Fabrication Centres, Business Centre and Support Centre**



**Offered Per Ton / CBM or sqm (min 12x12m) Monthly**  
(Pay-as-you-Go)



**Forklift Access**



**20 mt/sqm (200 kN/sqm) floor bearing capacity**



**150 mt Weighbridge**  
18m & 30m Length



**8km to Khalifa Port**  
Direct vessel delivery



**Customs gate**



**24/7 Monitoring and Security**



**Close to Etihad Rail**  
Two stations



**Gated Community**