

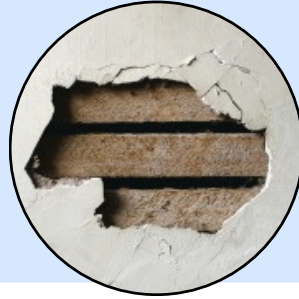
Atlas Junk | Reno Material Restrictions



All renovation materials listed below require a valid **Hazardous Materials Survey**, OR a visible **date stamp of 1991 or later** on the material itself (WCB Reg 20.112) *Bulk sample tests alone may be rejected. For surveys and testing, please contact **AREC Environmental** - 778.351.1966



DRYWALL



PLASTER



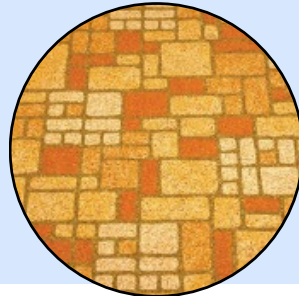
STUCCO



PAPER/FOIL BACKED INSULATION



VERMICULITE / BLOWN INSULATION



LINOLEUM



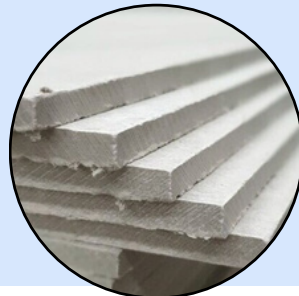
VINYL FLOORING/DECKING



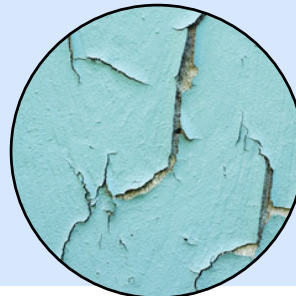
CEILING TILE



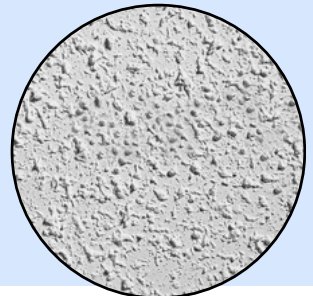
BRICK WITH MORTAR/GROUT



CEMENT BOARD



LEAD PAINT



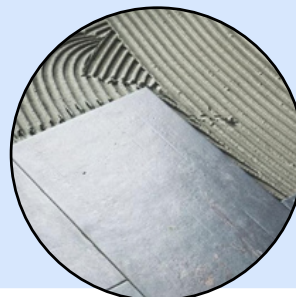
TEXTURED DRYWALL COATING



HEATING DUCT TAPE



PIPE INSULATION



TILE WITH MORTAR/GROUT



FLAT / TORCH-ON ROOFING