

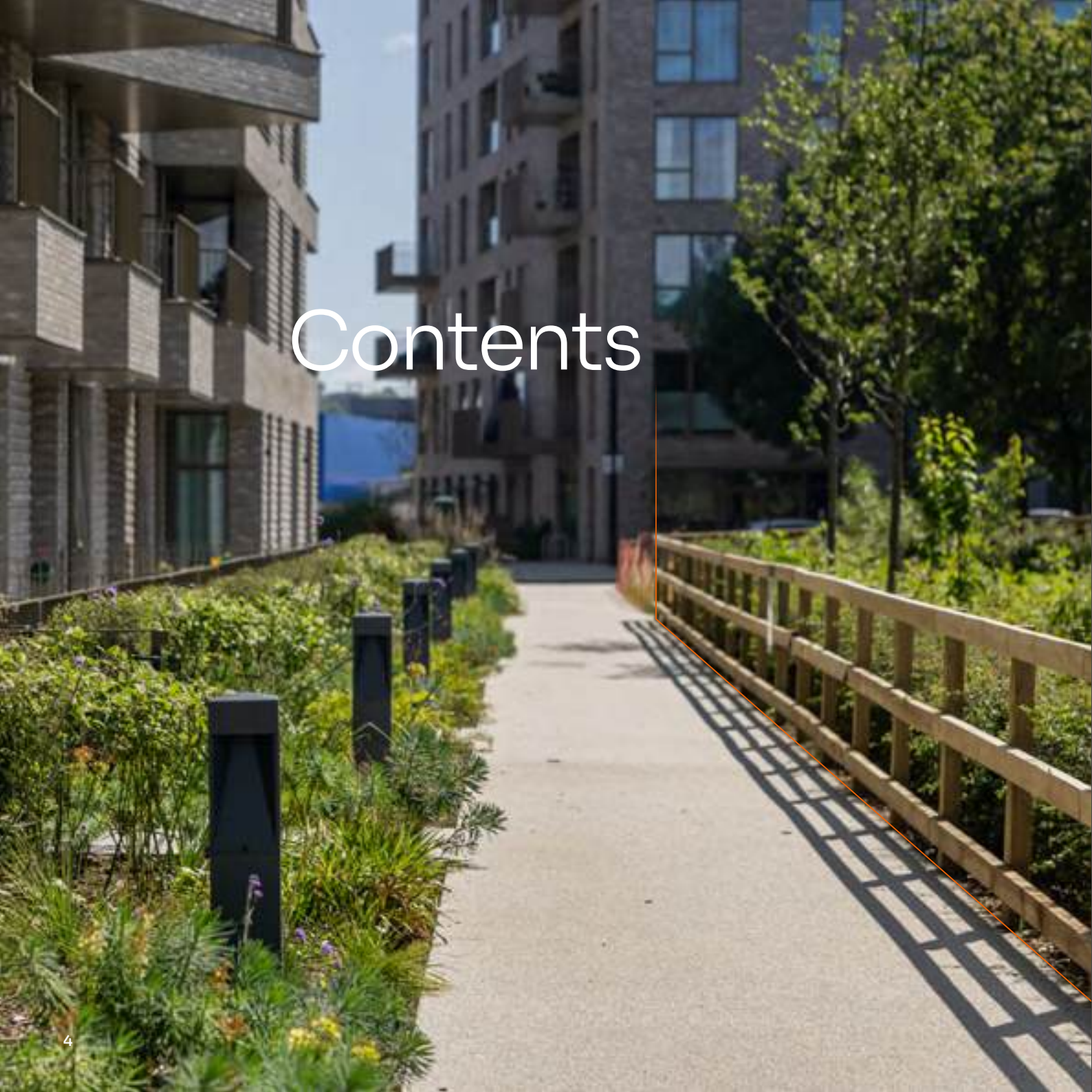
Kinley

EDITION 9

Shaping the landscape

Our passion for innovation and design excellence constantly drives the growth and refinement of our Landscape Edging solutions. With our insatiable appetite for resolving challenges and creating new possibilities, the architects, designers and specifiers who have chosen to partner with us know that by keeping a finger on the pulse of our product development, they will remain at the forefront of creative and competitive landscape design. For more information, samples and prices

T 01580 830688
E sales@kinley.co.uk
www.kinley.co.uk



Contents

Choice of materials	6
Concrete or metal?	7
Why choose metal?	8-9
Applications	10-21
New Innovations	22-23
Products	24-55
Finishes	56-60
Benches	61
Case Studies	62-65
Kinley Commitment	66-67
Sustainability & Carbon Reduction	68-69
UK Manufacturing	70-71



Choice of materials

Landscape edging is essential for creating clean, defined boundaries in gardens, driveways, plazas and other outdoor spaces. Depending on the area, different materials offer unique benefits.

Wood is a natural choice, often used between different soft landscaping zones such as lawns and borders. It blends well with garden aesthetics but is prone to rot, especially in damp conditions, and requires regular maintenance to extend its lifespan. Plastic offers a rot-resistant alternative to wood, although it becomes brittle at low temperatures and after exposure to sunlight.

Concrete provides the durability and strength required for heavy-duty applications, particularly bordering driveways where it is more able to withstand the weight and impact of vehicles. However, it is also prone to cracking with frost and is harder to install than most edging alternatives.

Steel edging offers a wide range of surface finishes, from untreated and Corten steel that weather attractively over time, to rust-resistant galvanised and powder-coated steel.

Aluminium is ideal for a sleek, contemporary look that neither rusts nor needs recoating, and is both lightweight and easy to install.



Wood edging



Metal edging

Concrete or metal?

TRADITIONAL EDGING
OUT WITH THE OLD



THE BISON ADVANTAGE
IN WITH THE NEW





Why choose metal?

Aluminium

The qualities of aluminium make it an ideal material for landscape edging design and installation.

Highly flexible, it can be easily formed by hand to create flowing and intricate curves for truly bespoke landscapes, where its sleek, modern finish perfectly complements contemporary garden design.

A naturally resistant material, the compact layer of oxidation that forms on its surface protects it against corrosion. Additional protection can be provided for Kinley aluminium edging by anodising the surface during production.

Aluminium is also proof against rot and sunlight, making it a far superior and longer-lasting alternative to wood and plastic as it will not lose strength or structure over time. Used on balconies and roof terraces, aluminium provides the added benefit of being fire-resistant.

Aluminium is the earth's most plentiful metal, so selecting it for landscape edging is a sustainable choice. All Kinley aluminium edging is also made from a minimum of 80% recycled content and 100% recyclable.

Aluminium edging options

AluExcel is our flagship edging product, widely used for commercial hard landscapes.

ResinEdge extruded aluminium edging provides strength and definition for resin-bound paths and driveways.

AllEdge premium lawn edging is the perfect choice for soft landscaping between lawns and borders.

Apex planter edging combines all the design strengths of AluExcel with a greater height, making it a low-cost, off-the-shelf alternative to bespoke low-level planter systems.



Steel

Kinley manufactures steel landscape edging in a comprehensive palette of finishes to suit every application from traditional to contemporary, urban industrial to rustic. All Kinley steel edging is manufactured from high-performance, high-grade steel with excellent corrosion resistance and durability.

It is also fire-resistant, making it suitable for use on balcony and rooftop landscaping. Untreated and Corten steels naturally weather over time, creating a pleasing patina that works equally well with industrial and organic landscapes. The oxidation characteristic of Corten steel also acts as a deterrent to further corrosion, making it an extremely durable, low-maintenance product. Galvanised steel is another natural metal finish with good corrosion resistance.

For ultimate rust protection, choose from Kinley's range of powder-coated colour finishes. These can also be matched to RAL colours for a bespoke finish that perfectly complements the built environment and planting, either by blending into the background or adding a pop of colour.

Second only to aluminium among Earth's most abundant metal resources, easily recycled and with a lower rate of carbon generation than concrete, steel is also a sustainable and environmentally responsible choice.

Steel edging options

Fort is a strong, robust steel edging for hard landscapes with a rolled top edge for a smoother, safer finish

Urban bespoke steel edging gives strength to high-traffic soft or hard landscapes.

Bison heavy-duty steel kerb is the perfect alternative to concrete pin kerbing for hard landscapes.

Borderline edging is suitable for both hard and soft landscaping applications and is available for online purchase in handy pre-packs.

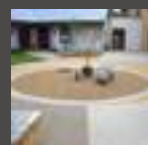
RoofEdge is a perforated steel edging that combines strength and easy drainage for roof terraces and green roofs.

RainEdge Perforated steel edging to allow water to flow from surrounding surfaces directly into the rain garden to enhance drainage efficiency.

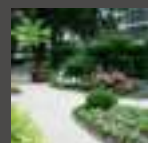
HiGrade Modular steel planters for ground-level landscaping for quicker lead times, faster installation and cost savings

Applications

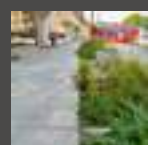
Solutions for every surface



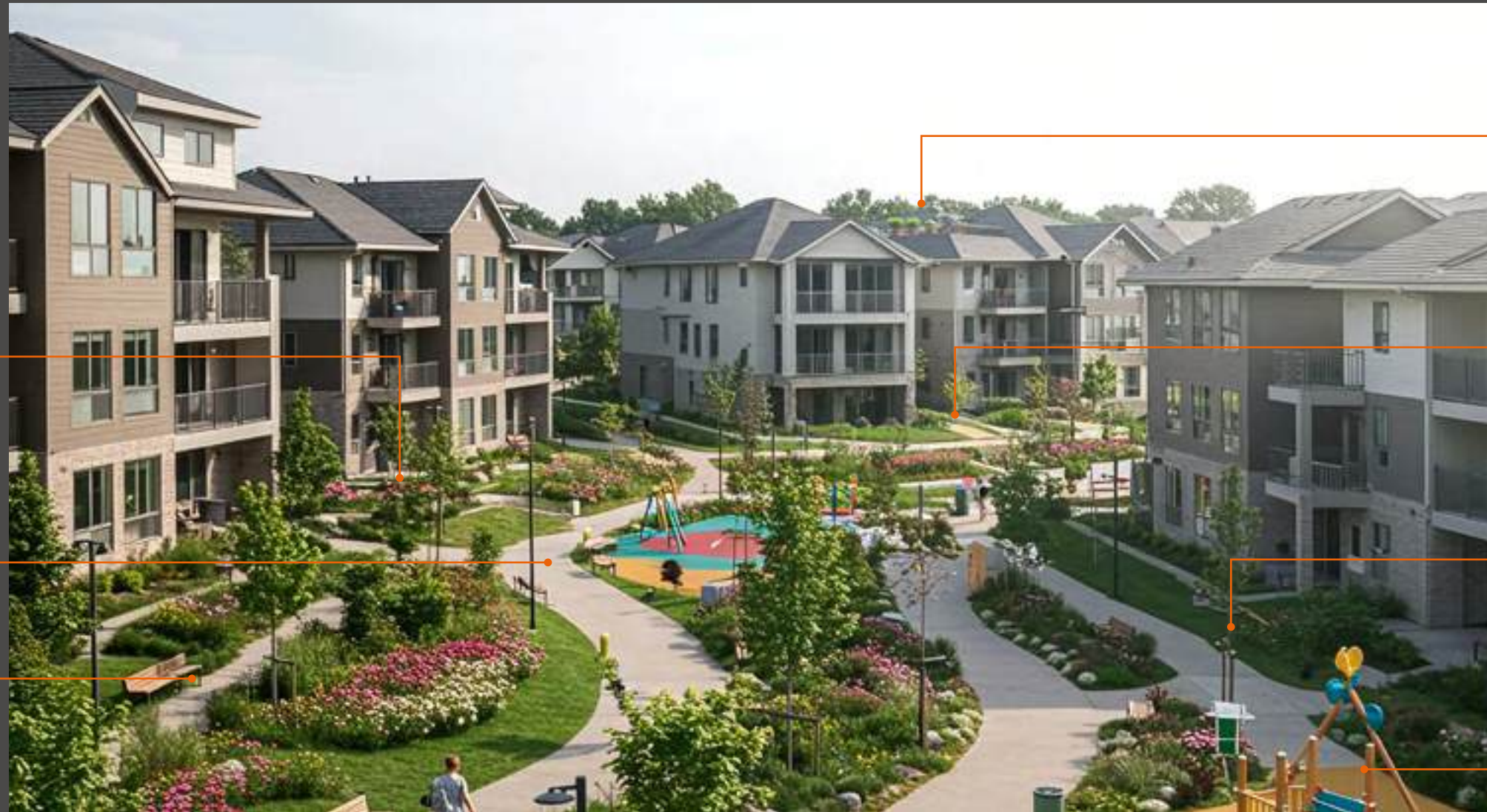
Courtyards



Footpaths



Public spaces



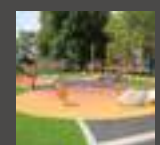
Roof gardens



Driveways



Lawns



Play areas

Tarmac

Versatility and Durability

Metal edging can be shaped into curves or intricate designs on-site while maintaining rigidity for straight lines. Unlike concrete, it resists frost, impact damage and cracking during storage or transport, ensuring long-lasting performance.

Easy Installation

Installing metal edging is 4–5 times faster than concrete kerbs. It requires no concrete base or haunching, reducing labour and time. Lightweight and easy to handle, it can be transported in smaller vehicles and positioned by one person. Precision-engineered connections ensure a seamless, joint-free finish.

Sustainability and Recycling

Steel, a highly abundant and recyclable material, offers significant environmental benefits. For example, Bison steel kerb manufacturing achieves a 52% carbon reduction compared to concrete pin kerbing. Its recyclability further enhances its eco-friendly credentials.

Tarmac Edging Options



Product	AluExcel	Bison
	AluExcel Aluminium Edging: Perfect for lighter-duty projects, this highly corrosion-resistant aluminium option suits coastal areas. Available in eight heights (25mm–150mm), it's adaptable for various surfacing needs.	Bison Heavy-Duty Steel Kerb: Ideal for service roads and pathways, it features a corrosion-resistant galvanised finish, a safe rolled top edge, and three height options (75mm, 100mm, 150mm).
Material	Aluminium Landscape Edging	Heavy-duty Steel Kerb
Typical uses	Blocks and pavers Asphalt and tarmac Wet-pour rubber and other safety surfacing Resin bound gravel Imprinted and plain concrete	Service Roads Pavements Pathways Other building developments
Product information	See page 24	See page 42



Paving

Creative Versatility

Metal edging allows for sweeping curves and intricate designs, whether shaped on-site or pre-manufactured. Its adaptability supports bold and unique paving concepts.

Subtle or Striking Aesthetics

Metal edging can be nearly invisible when flush-fitted with paving. Aluminium develops a soft silver patina over time while weathering steel gains a rustic finish that complements natural elements. For more prominent designs, raised or recessed paving can highlight weathering steel's character or bold powder-coated finishes.

Durability and Low Maintenance

Stronger than concrete, metal edging resists frost and physical impact without cracking. Aluminium withstands salt corrosion, making it ideal for coastal areas, while weathering steel's oxidised layer protects against further corrosion. Powder-coated steel adds durability and aesthetic appeal.

Easy Installation

Lightweight and easy to handle, metal edging is fixed with spikes and requires no concrete base, speeding up installation. Paving materials can be laid immediately, saving time and effort.

Edging Options for Paving

			
Product	AluExcel Aluminium Edging	Fort Roll-Topped Steel Edging	Urban
	Durable and corrosion-resistant, suitable for blocks, pavers, and resin-bound gravel. Available in various thicknesses and heights, with optional powder coating in any RAL colour.	Strong and safe with a rolled top edge, available in galvanised or weathering steel. Works well with paving, gravel, and resin surfaces, with powder-coated finishes for added style.	Urban can also be manufactured to bespoke heights and thicknesses and pre-formed during manufacture to create bespoke shapes for great visual effect or to accommodate landscaping and other features.
Material	Aluminium Landscape Edging	Steel Landscape Edging	Steel Landscape Edging
Typical uses	Blocks and pavers Asphalt and tarmac Wet-pour rubber and other safety surfacing Resin bound gravel Imprinted and plain concrete	Blocks and pavers Asphalt and tarmac Wet-pour rubber and other safety surfacing Resin bound gravel Imprinted and plain concrete	Imprinted and plain concrete Tarmac and hot-lay surfaces Resin bound and loose gravels Soft landscapes Blocks and pavers
Product information	See page 24	See page 34	See page 38

Resin

Sleek and Subtle

Metal edging, just a few millimetres thick, creates a discreet flush finish for resin surfaces. For raised borders, galvanised steel or mill-finish aluminium provides a stylish yet neutral edge.

Built to Last

Unlike concrete, which can crack, or timber, which rots, metal edging resists damage during handling, installation, and frost exposure. Its durability ensures a low-maintenance, long-lasting solution for resin surfaces.

Flexible by Design

Easily shaped on-site or pre-formed into curves or straight lines, metal edging adapts to any design. Lightweight and easy to handle, it's secured with metal spikes and requires no concrete base, allowing immediate resin application.



Edging Options for Resin Surfaces

Product			
	ResinEdge Aluminium Edging	AluExcel Aluminium Edging	Bison Heavy-Duty Steel Kerb
	Designed for resin-bound paths and driveways, ResinEdge offers clean, durable borders with a 3mm base and 5mm rolled top edge. Available in flexible and rigid forms for versatile designs	Ideal for lighter-duty applications, AluExcel resists corrosion, perfect for coastal or recreational areas. Offered in various thicknesses and heights, it supports creative layouts.	Galvanised for corrosion resistance, Bison suits heavy-traffic areas like service roads and pathways, providing robust yet flexible edging with a rolled top edge for safety.
Material	Aluminium Landscape Edging	Aluminium Landscape Edging	Steel Landscape Edging
Typical uses	Blocks and pavers Asphalt and tarmac Wet-pour rubber and other safety surfacing Resin bound gravel Imprinted and plain concrete	Blocks and pavers Asphalt and tarmac Wet-pour rubber and other safety surfacing Resin bound gravel Imprinted and plain concrete	Imprinted and plain concrete Tarmac and hot-lay surfaces Resin bound and loose gravels Soft landscapes Blocks and pavers
Product information	See page 32	See page 24	See page 42



Soft Landscaping

Versatility for Every Design

Metal edging can be shaped on-site or pre-formed to create precise curves while maintaining rigidity. Hidden connectors ensure seamless joints without overlaps, and its lightweight design makes installation easy. With multiple height options, it can be flush-fitted with lawns or raised for planting areas.

Colours That Complement Nature

Uncoated aluminium and galvanised steel offer weather-resistant, low-maintenance finishes for understated elegance. Weathering steel develops a rustic patina that blends beautifully with natural elements. For bold designs, powder coating in any RAL colour enhances durability and adds creative flair.



Soft Landscaping Edging Options

Product	Borderline Driveway & Gravel Path Edging	AllEdge Aluminium Garden Lawn Edging	Urban Steel Landscape Edging
	A cost-effective steel edging for lawns, borders, and gravel paths. Available in powder-coated brown, galvanised, or weathering steel, it comes in three thicknesses (2mm, 3mm, 5mm) and two heights (100mm, 150mm).	Corrosion-resistant and ideal for coastal areas, this 5mm thick, 100mm high edging can be powder-coated in any RAL colour for a customised look.	A heavy-duty option for prestigious gardens, Urban Steel stands 150mm high and is available in untreated, galvanised, or weathering steel, with powder coating and bespoke shaping options.
Material	Steel Landscape Edging	Aluminium Landscape Edging	Steel Landscape Edging
Typical uses	Fine lawns Garden & planting borders Gravel pathways Bark areas Loose gravel	Fine Lawns Garden & planting borders Flower Gardens Gravel garden paths Bark areas Loose gravel	Imprinted and plain concrete Tarmac and hot-lay surfaces Resin bound and loose gravels Soft landscapes Blocks and pavers
Product information	See page 48	See page 24	See page 38



Gravel

Design
Metal edging offers flexibility and strength, forming smooth curves and shapes that add character to driveways and paths. Hidden connectors ensure a seamless appearance, while its design eliminates the need for concrete bases, protecting surrounding vegetation from harmful acids.

Durability
Crafted from aluminium or steel, metal edging resists frost, impact and weathering far better than concrete or timber. Aluminium offers exceptional corrosion resistance, while galvanised and weathering

steel provide robust, long-lasting alternatives. Powder-coated steel adds durability and colour options to suit any landscape.

Easy Installation
Lightweight metal edging is quicker and easier to install than concrete kerbing. Secured with metal spikes, it requires no concrete base or haunching, enabling immediate work on gravel and surrounding areas. Its low-maintenance longevity offsets its higher upfront cost, making it a cost-effective choice.



Gravel Edging Products

Product	Bison Heavy-Duty Steel Kerb	Borderline Steel Edging	Urban Steel Edging
	Robust and flexible, with a 7mm rolled top edge for safety, available in three heights (75mm, 100mm, 150mm).	Versatile and cost-effective, offered in galvanised, powder-coated, or weathering steel, with options for thicknesses (2mm–5mm) and heights (100mm, 150mm).	Customisable for high-end designs, available in galvanised, weathering steel, or powder-coated finishes, with bespoke curves and dimensions.
Material	Steel Landscape Edging	Steel Landscape Edging	Steel Landscape Edging
Typical uses	Service Roads Pavements Pathways Other building developments	Fine lawns Garden & planting borders Gravel pathways Bark areas Loose gravel	Imprinted and plain concrete Tarmac and hot-lay surfaces Resin bound and loose gravels Soft landscapes Blocks and pavers
Product information	See page 42	See page 48	See page 38

Innovations



HiGrade
modular



RainEdge



Apex



Borderline

NEW CONNECTION DETAIL

AluExcel



Premium Aluminium Edge Restraint

Suitable For:

- Public realm projects
- Pathways
- Play areas
- Sports areas
- Patios

Use With:

- Blocks and pavers
- Asphalt and tarmac
- Imprinted and plain concrete
- Resin-bound and loose gravel
- Wet-pour rubber and other safety surfacing

Advantages:

- High-quality, durable aluminium alloy of 6005A resists corrosion
- Available in flexible and rigid profiles to easily create clean curves or straight lines by hand
- Quick and straightforward installation saves time and money
- Strong base and tapered top edge ensure stability with a refined finish
- Compatible with all hard and soft surface types
- Designed and made in UK with good stock availability and quick delivery
- Preformed corners available for easy installation

Edging Height					
Flexible Version		101012	101014	101016	101018
Rigid Version		101013	101015	101017	101019
Dimensions	Edging thickness (top bead)	5.5 mm	6 mm	6 mm	6 mm
	Edging length	2500 mm	2500 mm	2500 mm	2500 mm
	Edging foot width	45 mm	45 mm	45 mm	45 mm
	Fixing stake length	250 mm	250 mm	250 mm	250 mm
Other	Minimum radius by hand*		1000mm		
	Minimum radius in factory				400 mm
	Available finishes	Mill finish/ powder coat to order			
	Material Specification	6005A aluminium			

					
Edging Height		75mm	100mm	120 mm	150 mm
Flexible Version		101020	101022	101024	101028
Rigid Version		101021	101023	101025	101030
Dimensions	Edging thickness (top bead)	6.5 mm	6.5 mm	7 mm	8.5 mm
	Edging length	2500 mm	2500 mm	2500 mm	2500 mm
	Edging foot width	70 mm	70 mm	70 mm	70 mm
	Fixing stake length	250 mm	250 mm	250 mm	250 mm
Other	Minimum radius by hand*			1500 mm	
	Minimum radius in factory	500 mm		600 mm	
	Available finishes	Mill finish/ powder coat to order			
	Material Specification	6005A aluminium			



Kinley K

MADE
IN UK



Apex



Aluminium planter edging

Suitable For:

- Pathways
- Courtyards
- Patios
- Plazas
- Roof terraces
- Low-level planting

Use With:

- Blocks and pavers
- Asphalt and tarmac
- Wet-pour rubber safety surfacing
- Resin-bound gravel
- Roof terrace systems

Advantages:

- Manufactured from durable aluminium alloy 6005A that won't rust or corrode
- Cost-effective, off-the-shelf alternative to bespoke planter systems
- Pre-formed corners ensure perfectly straight lines and easy installation
- Strong base with 6mm thickness provides exceptional stability
- Compatible with all hard and soft landscaping surfaces

Edging Height		225 mm	Internal Corners	External Corners
Rigid Version		103030	101031	103032
Dimensions	Edging thickness (top bead)	12 mm	12 mm	12 mm
	Edging length	2500 mm	2500 mm	150 mm x 150 mm
	Average edging thickness	6 mm	6 mm	6 mm
	Edging foot width	85 mm	85 mm	85 mm
	Fixing stake length	250 mm	250 mm	
Available finishes		Mill finish/anodised bronze finish or powder coated to any RAL colour on special request.		
Material Specification		6005 aluminium		
Recycled content		Part recycled/ 100% recyclable		

AllEdge



Premium aluminium lawn edging

Suitable For:

- Fine lawns
- Flower beds
- Gravel garden paths
- Garden and planting borders
- Contemporary garden designs
- Bark areas
- Loose gravel

Advantages:

- Lightweight and robust
- High-quality aluminium alloy
- Simple and quick to install
- Concealed fixings for a seamless finish
- Innovative locking mechanism prevents soil displacement
- Long-lasting and weather-resistant

Use With:

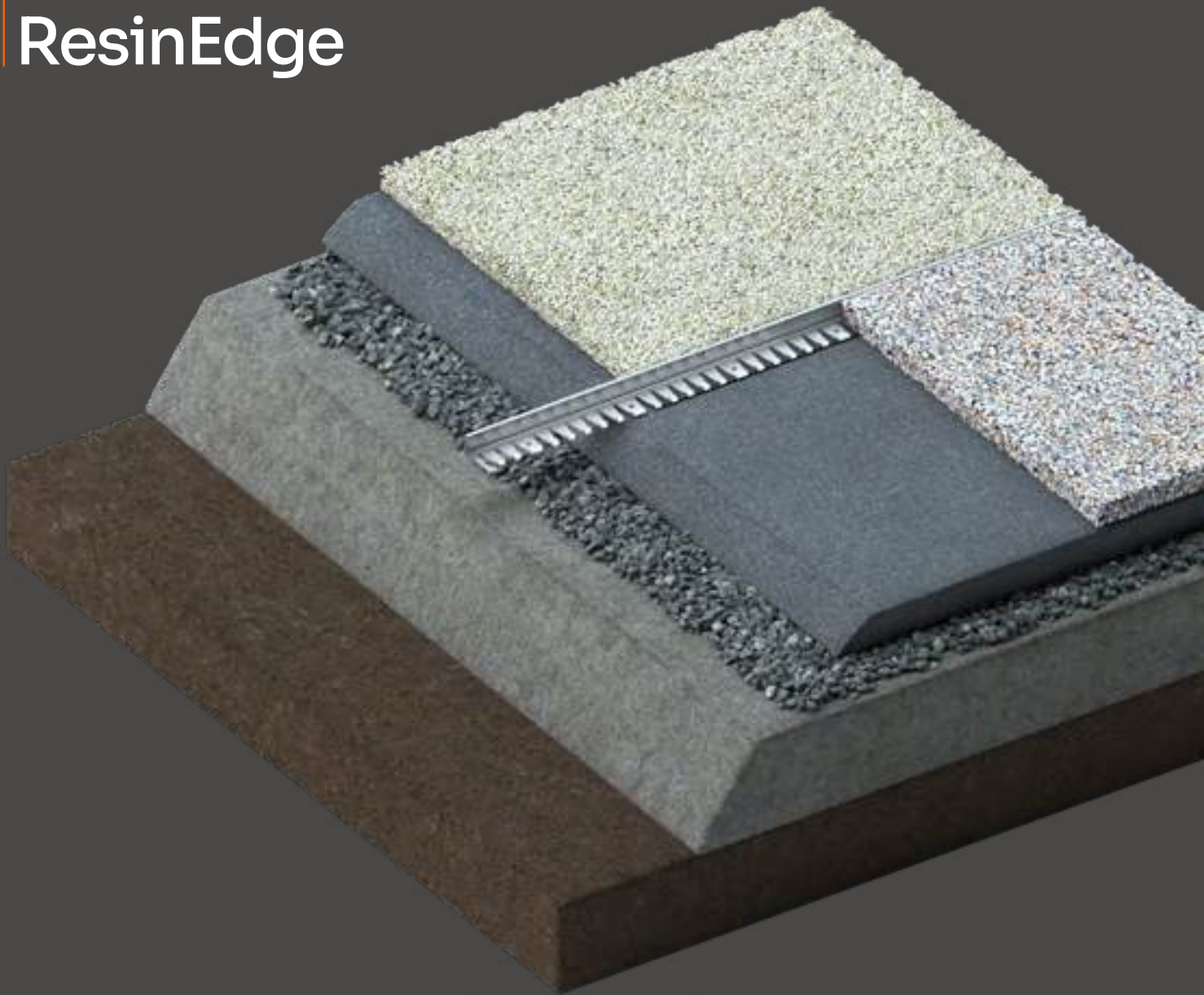
- Flower gardens
- Gravel paths
- Bark-covered areas

Product Properties		
Product Code		11010
Edging Height		100 mm
Dimensions	Edging thickness (top bead)	5 mm
	Edging length	2400 mm
	Fixing stake length	300 mm
Other	Available finishes	Mill finish / powder coat to order
	Material Specification	6063A aluminium
	Recycled content	Part recycled / 100% recyclable

Fixings (need to be ordered separately to edging)

Product	Pack Size	Qty per 2.4 m length	Item Code
AllEdge 100mm aluminium connectors	15	3	112013
AllEdge 300mm aluminium fixing stakes	15	3	113011

ResinEdge



Extruded aluminium edging for resin bound hard landscaping

Suitable For:

- Resin-bound paths and driveways
- Recreational areas
- Garden pathways
- Public spaces
- Decorative hard landscaping

Use With:

- Resin-bound and resin-bonded surfaces
- Contrasting resin colours for decorative effects
- Driveway borders
- Pathway edges

Advantages:

- Heavy-duty construction for commercial applications
- Broad footplate for excellent adhesion and stability
- 3mm-thick aluminium for superior strength
- 5mm top edge bead for a smooth, safe finish
- Flexible and rigid variations for versatile design options
- Simple click-together connectors for seamless joints
- Flexible edging allows on-site profile adjustments
- Quick and easy to install

Edging Height		15 mm	18 mm
Flexible Version		101032	101010
Rigid Version		101033	101011
Dimensions	Edging thickness (top bead)	5 mm	5 mm
	Edging length	2500 mm	2500 mm
	Edging foot width	30 mm	30 mm
	Fixing stake length	N/A	N/A
Costs	Typical install rate linear metre/ hour	40-45 metres	40-45 metres
	Typical supply/ install cost £ per m	£7.00	£8.00

Edging Height		15 mm	18 mm
Other	Minimum radius by hand*	1000 mm	
	Minimum radius in factory	300 mm	
	Available finishes	Mill finish/ powder coat to order	
	Material Specification	6005 T6 hardened aluminium	
	Recycled content	Part recycled/ 100% recyclable	



L-profile roll-topped steel edge restraint for hard landscape surfaces

- Suitable For:**
- Public spaces and plaza areas
 - Raised planting areas
 - Patios
 - Pathways
 - High-traffic spaces such as parks and playgrounds

- Use With:**
- Blocks and pavers
 - Imprinted and plain concrete
 - Resin-bound and loose gravel
 - Other wet-pour and permeable surfacing
 - Hot asphalt and tarmac

- Advantages:**
- Strong and durable for longevity
 - Highly resistant to atmospheric corrosion and requires little maintenance
 - Flexible edging to create inspiration curves, and L-shaped angles for the perfect corner
 - Rolled top edge prevents sharp edges
 - Sliding connection plates create a seamless face with no overlap
 - Made from sustainable materials and 100% recyclable
 - Contemporary looks including powder coating
 - Preformed corners available for easy installation

Fort 50mm edging height

Item code	Material Steel	Edging thickness (top fold)	Edging length	Edging foot width	Product Properties	Radius by hand dimension
141410	Galvanised	7mm	2400mm	50mm	Flexible	1500 mm
141418	Untreated	7mm	2400mm	50mm	Flexible	1500 mm
141426	Corten A	7mm	2400mm	50mm	Flexible	1500 mm
141411	Galvanised	7mm	2400mm	50mm	Rigid	0 mm
141419	Untreated	7mm	2400mm	50mm	Rigid	0 mm
141427	Corten A	7mm	2400mm	50mm	Rigid	0 mm

Fort 75mm edging height



Item code	Material Steel	Edging thickness (top fold)	Edging length	Edging foot width	Product Properties	Radius by hand dimension
141412	Galvanised	7mm	2400mm	60mm	Flexible	1500 mm
141420	Untreated	7mm	2400mm	60mm	Flexible	1500 mm
141428	Corten A	7mm	2400mm	60mm	Flexible	1500 mm
141413	Galvanised	7mm	2400mm	60mm	Rigid	0 mm
141421	Untreated	7mm	2400mm	60mm	Rigid	0 mm
141429	Corten A	7mm	2400mm	60mm	Rigid	0 mm

Fort 150mm edging height



Item code	Material Steel	Edging thickness (top fold)	Edging length	Edging foot width	Product Properties	Radius by hand dimension
141416	Galvanised	7mm	2400mm	60mm	Flexible	1500 mm
141424	Untreated	7mm	2400mm	60mm	Flexible	1500 mm
141433	Corten A	7mm	2400mm	60mm	Flexible	1500 mm
141417	Galvanised	7mm	2400mm	60mm	Rigid	0 mm
141425	Untreated	7mm	2400mm	60mm	Rigid	0 mm
141433	Corten A	7mm	2400mm	60mm	Rigid	0 mm

Fort 100mm edging height



Item code	Material Steel	Edging thickness (top fold)	Edging length	Edging foot width	Product Properties	Radius by hand dimension
141414	Galvanised	7mm	2400mm	60mm	Flexible	1500 mm
141422	Untreated	7mm	2400mm	60mm	Flexible	1500 mm
141430	Corten A	7mm	2400mm	60mm	Flexible	1500 mm
141415	Galvanised	7mm	2400mm	60mm	Rigid	0 mm
141423	Untreated	7mm	2400mm	60mm	Rigid	0 mm
141431	Corten A	7mm	2400mm	60mm	Rigid	0 mm

Fort 200mm edging height



Item code	Material Steel	Edging thickness (top fold)	Edging length	Edging foot width	Product Properties	Radius by hand dimension
141450	Galvanised	7mm	2400mm	60mm	Flexible	1500 mm
141452	Untreated	7mm	2400mm	60mm	Flexible	1500 mm
141455	Corten A	7mm	2400mm	60mm	Flexible	1500 mm
141451	Galvanised	7mm	2400mm	60mm	Rigid	0 mm
141454	Untreated	7mm	2400mm	60mm	Rigid	0 mm
141456	Corten A	7mm	2400mm	60mm	Rigid	0 mm

Accessories

Item code	Product properties	Pack Qty
142410	50 mm Connector	15
142411	75 mm Connector	15
142412	100 mm Connector	15
142413	150 mm Connector	15
142314	200 mm Connector	15
102032	Spiral Fixing (5 per 2.4m Length)	

Urban



Heavy-duty steel landscape edging for hard or soft landscaping

Suitable For:

- High-end residential projects
- Footpaths
- Public realm areas
- Driveways
- Recreational spaces
- Fine lawns

Use With:

- Imprinted and plain concrete
- Tarmac, asphalt and other hot-lay surfaces (concrete haunching may be required for added support)
- Resin-bound and loose gravel
- Soft landscapes
- Blocks and pavers

Advantages:

- Flexible design creates bespoke curves and lines in lawns, plant bedding, and pathways
- Strong, corrosion-resistant steel ideal for high-traffic landscapes
- Seamless fixings for a smooth, professional appearance
- Made from sustainable materials and 100% recyclable
- Available in variety of thicknesses and finishes to meet all design needs

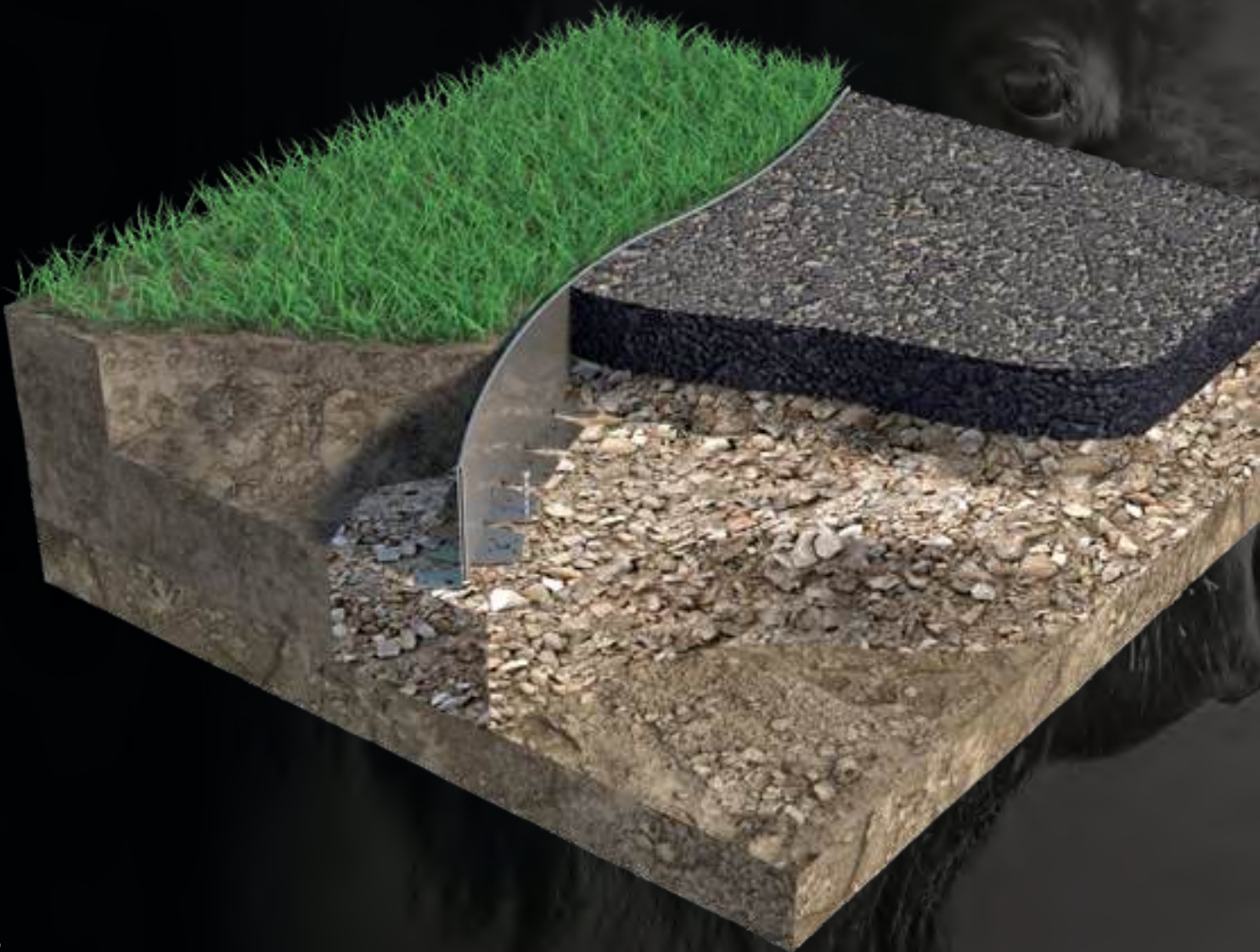
Finish	Edging height (mm)	Thickness	Edging length (mm)	Item code
Galvanised	100	3mm	2.4m	154019
		6mm		154046
	150	3mm		154011
		6mm		154015
	200	3mm		154042
		6mm		154017
	250	3mm	2.9m	154022
		6mm		154030
	300	3mm		154026
		6mm		154034
Untreated	100	3mm	2.4m	154039
		6mm		154037
	150	3mm		154012
		6mm		154016
	200	3mm		154043
		6mm		154049
	250	3mm	2.9m	154023
		6mm		154031
	300	3mm		154027
		6mm		154035
Corten	100	3mm	2.4m	154036
		6mm		154044
	150	3mm		154010
		6mm		154014
	200	3mm		154040
		6mm		154018
	250	3mm	2.9m	154020
		6mm		154028
	300	3mm		154024
		6mm		154032

Accessories

Item code	Product properties	Pack Qty
155010	3 mm Untreated Connection Plate	5
155011	3 mm Galvanised Connection Plate	5
155012	6 mm Untreated Connection Plate	5
155013	6 mm Galvanised Connection Plate	5
155014	Fixing stake	5
152018	Fixing Kit	20



BisonKerb



Heavy-duty steel kerb for edging hard landscapes

Suitable For:

- Service roads
- Pavements
- Driveways
- Pathways
- Car parks
- Other building developments

Use With:

- Asphalt and tarmac
- Blocks and pavers
- Imprinted and plain concrete
- Resin-bound and loose gravel
- Other wet-pour and permeable surfacing

Advantages:

- More robust than concrete and won't crack
- Much quicker to install than concrete
- Lightweight – approximately three times lighter than concrete
- Requires less labour, ensuring cost-effective high-quality edging
- Easy to fit, even for solo workers
- Rounded top edge for a smooth, safe finish
- Durable and corrosion-resistant
- Preformed corners available for easy installation

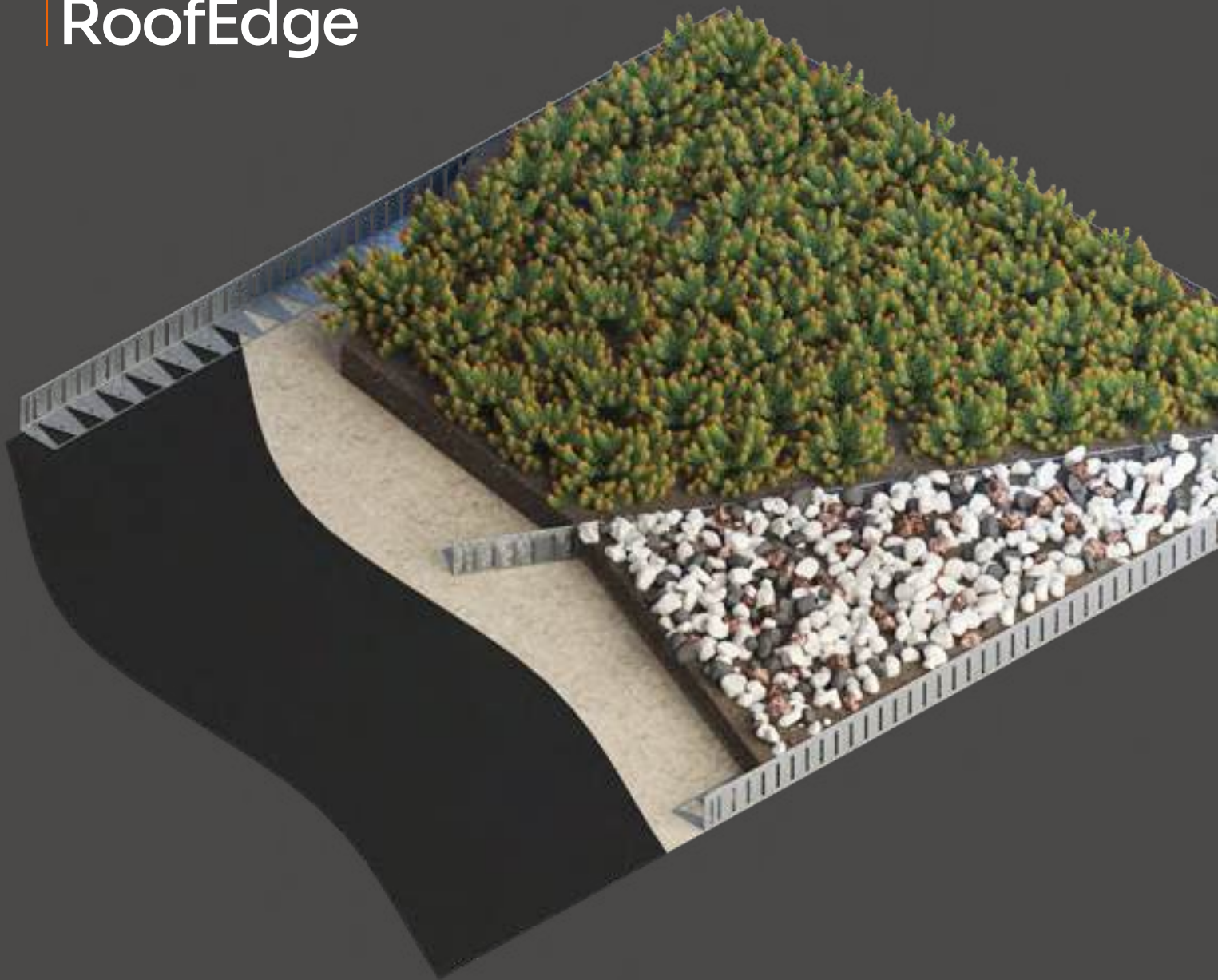
Item code	Edging height	Edging thickness (top fold)	Edging length	Edging foot width	Product properties	Material	Recycling
181010	150 mm	7 mm	2400 mm	50 mm	Flexible	Galvanised	100% recyclable
181013	100 mm	7 mm	2400 mm	50 mm	Flexible	Galvanised	100% recyclable
181012	75 mm	7 mm	2400 mm	50 mm	Flexible	Galvanised	100% recyclable

Item code	Product properties	Pack Qty	182012
182010	150 mm Connector Plate	15	100% recyclable
181012	100 mm Connector Plate	15	100% recyclable
182011	75 mm Connector Plate	15	100% recyclable
102032	Spiral Fixing (10 per 2.4 m Length)		100% recyclable



CO₂e
Assessed
Product

RoofEdge



L-profile steel edge restraint for roof terrace and green roof applications

Suitable For:




- Green roof projects on residential or commercial buildings
- Roof terraces incorporating green roof elements
- Delineating between hard and soft landscaping
- Containing loose materials such as soil, chippings, and ballast
- Allowing even irrigation and drainage between landscaped areas

Use With:

- Grass and planting areas
- Loose aggregates and ballast
- Hard landscaping materials
- Green roof systems

Advantages:

- Lightweight and robust for easy handling and durability
- Versatile design for various roof garden applications
- Vertical slots facilitate lateral drainage
- Simple and quick to install
- Available in bespoke finishes, including Corten steel and powder coating

					
Edging Height	50 mm	75 mm	100 mm	150 mm	200 mm
Product Code	125010	125011	125012	125013	125014
Edging Length	2400 mm				
Available finishes	Galvanised finish, Corten and Powder Coated options available to order.				
Recycled content	100% recyclable				

RainEdge



Perforated steel edging for rain gardens

Suitable For:

- Green roof projects on residential or commercial buildings
- Roof terraces incorporating green roof elements
- Delineating between hard and soft landscaping
- Containing loose materials such as soil, chippings, and ballast
- Allowing even irrigation and drainage between landscaped areas

Advantages:

- Lightweight and robust for easy handling and durability
- Versatile design for various roof garden applications
- Vertical slots facilitate lateral drainage
- Simple and quick to install
- Available in bespoke finishes, including Corten steel and powder coating
- Preformed corners available for easy installation

Use With:

- Grass and planting areas
- Loose aggregates and ballast
- Hard landscaping materials
- Green roof systems

Profile	Finish	Edging height (mm)	Thickness	Edging length (mm)	Item code
Flat Profile	Galvanised	250mm	3mm	2.4m	171011
	Untreated	250mm	3mm	2.4m	171010
	Corten	250mm	3mm	2.4m	171012
	Galvanised	300mm	3mm	2.4m	171014
	Untreated	300mm	3mm	2.4m	171013
	Corten	300mm	3mm	2.4m	171015
Top fold	Galvanised	250mm	3mm	2.4m	172011
	Untreated	250mm	3mm	2.4m	172010
	Corten	250mm	3mm	2.4m	172012
	Galvanised	300mm	3mm	2.4m	172014
	Untreated	300mm	3mm	2.4m	172013
	Corten	300mm	3mm	2.4m	46

Borderline



Premium Steel Edging for Gardens, Pathways & Driveways

Suitable For:

- Kitchen gardens
- Loose gravel areas
- Rose gardens
- Allotments
- Flower beds
- Gravel garden paths
- Contemporary garden designs
- Fine lawns
- Garden & planting borders
- Pathways

Use With:

- Soft landscapes
- Bark areas
- Loose gravel

Advantages:

- Saves hours of backbreaking edge maintenance
- Flexible and hard-wearing
- Choice of finishes available
- Various thicknesses and heights for different applications

Edging thickness	Edging height	Edging length	Item code	Finish
1.8 mm	100 mm	1 m (Supplied in packs of 5)	131056	Untreated
2 mm	100 mm	2 m	131050	Untreated
3 mm	150 mm	2 m	131053	Untreated
1.8 mm	100 mm	1 m (Supplied in packs of 5)	131057	Galvanised
2 mm	100 mm	2 m	131051	Galvanised
3 mm	150 mm	2 m	131054	Galvanised
1.8 mm	100 mm	1 m (Supplied in packs of 5)	131058	Powder-coated brown
2 mm	100 mm	2 m	131052	Powder-coated brown
3 mm	150 mm	2 m	131055	Powder-coated brown

Fixings (required for 2m lengths only, 1m lengths come with stakes attached)	Code
300mm Galvanised fixing stakes, pack of 15 (For 100mm Borderline)	132013-N
300mm Powder-Coated Brown fixing stakes, pack of 15 (For 100mm Borderline)	132012-N
300mm Untreated Fixing Stakes, pack of 15 (For 100mm Borderline)	132014-N
400mm Galvanised fixing stakes, pack of 15 (For 150mm Borderline)	132016-N
400mm Powder-Coated Brown fixing stakes, pack of 15 (For 150mm Borderline)	132015-N
400mm Untreated Fixing Stakes, pack of 15 (For 150mm Borderline)	132018-N

HiGrade



Modular steel edging for ground level planter landscaping.

Suitable For:

- Large-scale landscaping projects
- Ground-level planters
- Sloping or undulating terrain
- High-traffic areas

Use With:

- Imprinted and plain concrete
- Tarmac and asphalt
- Resin-bound and loose aggregates
- Blocks and pavers
- Soft landscaping

Advantages:

- Modular units reduce lead times and speed up installation
- Extra height allows for cost-effective planter-height borders
- Strong, corrosion-resistant steel ensures durability in high-traffic areas
- Rolled top edges enhance safety and rigidity while adding a refined appearance
- Seamless fixings and connections create a smooth, professional finish
- Made from sustainable, 100% recyclable materials
- Triangular brackets provide additional support

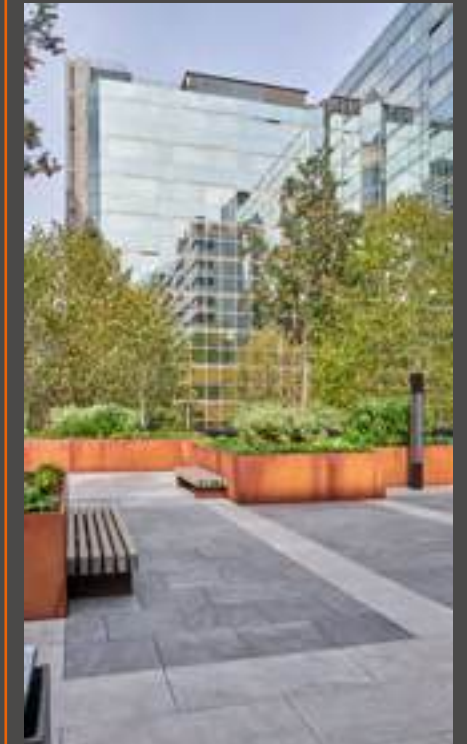
Finish	Edging height (mm)	Top fold size	Bottom fold size	Unit	Item code
Galvanised	350	50mmx25mm	95mm	Internal Corner	164113
				External Corner	164119
				Internal Curve	164213
				External Curve	164219
				Straight	164007
	400	50mmx25mm	95mm	Internal Corner	164114
				External Corner	164120
				Internal Curve	164214
				External Curve	164220
				Straight	164008

Finish	Edging height (mm)	Top fold size	Bottom fold size	Unit	Item code
Galvanised	450	50mmx25mm	95mm	Internal Corner	164115
				External Corner	164121
				Internal Curve	164215
				External Curve	164221
				Straight	164009
	500	50mmx25mm	95mm	Internal Corner	164116
				External Corner	164122
				Internal Curve	164216
				External Curve	164222
				Straight	164010
Finish	Edging height (mm)	Top fold size	Bottom fold size	Unit	Item code
Corten	350	50mmx25mm	95mm	Internal Corner	164125
				External Corner	164131
				Internal Curve	164125
				External Curve	164131
				Straight	164013
	400	50mmx25mm	95mm	Internal Corner	164126
				External Corner	164132
				Internal Curve	164226
				External Curve	164232
				Straight	164014
	450	50mmx25mm	95mm	Internal Corner	164127
				External Corner	164133
				Internal Curve	164227
				External Curve	164233
				Straight	164015
	500	50mmx25mm	95mm	Internal Corner	164128
				External Corner	164134
				Internal Curve	164228
				External Curve	164234
				Straight	164016

Finish	Edging height (mm)	Top fold size	Bottom fold size	Unit	Item code
Powder coated	350	50mmx25mm	95mm	Internal Corner	164137
				External Corner	164143
				Internal Curve	164237
				External Curve	164243
				Straight	164019
	400	50mmx25mm	95mm	Internal Corner	164138
				External Corner	164144
				Internal Curve	164238
				External Curve	164244
				Straight	164020
	450	50mmx25mm	95mm	Internal Corner	164139
				External Corner	164145
				Internal Curve	164239
				External Curve	164245
				Straight	164021
	500	50mmx25mm	95mm	Internal Corner	164140
				External Corner	164146
				Internal Curve	164240
				External Curve	164246
				Straight	164022

Case study

HiGrade 245 Hammersmith Road



Finishes

Aluminium

Selecting the appropriate finish for your metal landscape edging is crucial to achieving the desired balance between functionality, durability and aesthetics that your project demands. Kinley offers a diverse range of finishes, each tailored to specific design requirements and environmental conditions.

Aluminium finishes:

- For decorative edging in gardens and landscaped areas with minimal heavy use
- ResinEdge for defining contrasting areas of resin-bound surfaces such as driveways and paths

Mill Finish:

- A sleek, brushed appearance that offers both a contemporary style and an extended lifespan
- Low-maintenance option that performs well in exposed and marine environments, as it is more resistant to weathering and high salinity

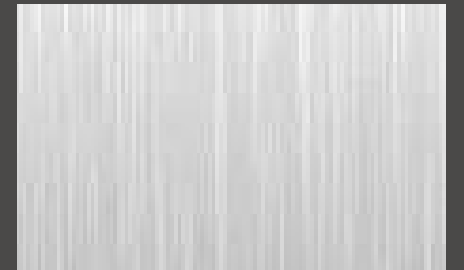
Anodised:

- Improves the performance and appearance of aluminium edging
- Is harder than untreated aluminium, making it more resistant to wear, scratches, discolouration, corrosion and general weathering, and is easier to clean
- More consistent in appearance, with fewer surface imperfections and regular colouration

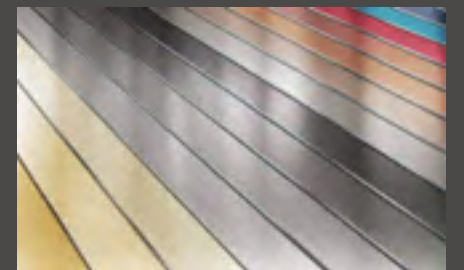
Anodising alternative options:

- Bronze-effect - a warmer look that may be more suited to some applications

Mill Finish



Anodised Aluminium



Finishes

Steel

Untreated:

- Untreated steel can be the perfect complement to an industrial theme, gaining in character as it ages
- It isn't recommended for extremely humid, coastal or marine environments
- Regular cleaning will help to prolong its appearance and function.

Galvanised:

- Galvanisation involves coating steel with a layer of zinc, enhancing its resistance to corrosion and extending its lifespan
- The finish is robust, making it suitable for high traffic areas and public spaces
- Primarily offers the strength of steel with added protection against corrosion where the edging is installed flush with an adjoining surface and therefore less visible

Powder-Coated:

- Vastly superior alternative to traditional paint finishes. The process ensures even and complete coverage and a baked-on finish, protecting the steel against damage and corrosion
- All standard RAL powder-coating colours available
- Needs to be carefully handled during installation and regular cleaning to take place to ensure the coating doesn't chip or scratch

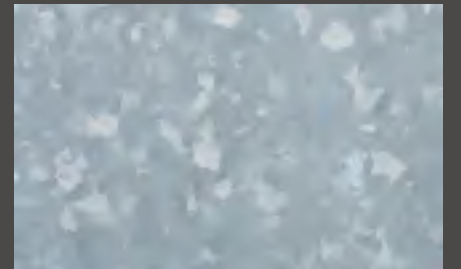
Finishes and lead times:

- Bear in mind when considering finishes that non-standard finishes can increase production lead times, so this should be factored into the project management schedule. However, if your project calls for something special, we can guarantee it will be worth waiting for

Untreated



Galvanised



RAL Colours



Finishes

Corten



Performance

Corten steel is highly durable and corrosion-resistant, ensuring long-lasting use with minimal maintenance. The protective patina prevents further rusting, while its strength makes it perfect for high-traffic areas. Additionally, it adapts well to diverse climates, remaining reliable in coastal or fluctuating conditions.

Kinley's Corten steel edging is a sustainable, low-maintenance solution that combines beauty, strength and versatility to elevate hard and soft landscaping.

Corten



Design

As the unique natural patina of Corten steel evolves, it creates warm, earthy tones that complement and contrast with plants, water features and other landscape elements.

Versatile and easily shaped, Corten steel can be used for a variety of applications, including edging, retaining walls, planters and sculptures, offering endless design possibilities. As a fully recyclable material, it's also an eco-conscious choice for your landscaping needs.

Landscaping with Corten

Corten steel landscape edging offers a perfect blend of unique design and lasting performance, ideal for creating beautiful, durable outdoor spaces.

Composition

The unique chemical composition of Corten steel encourages a thin layer of rust to quickly form on its surface, giving its distinctive industrial/rustic patina, but this process isn't only aesthetic. The thin layer also acts as a self-sealing deterrent to further corrosion, making it a durable and low-maintenance option.

Benches

At Kinley, we like to ensure that our outdoor spaces are not only aesthetically pleasing but also highly functional and durable. Our integrated benches offer a seamless blend of design to help transform public realms and commercial landscapes into spaces for all to enjoy. By integrating seating into the high quality planter systems, you can create a cohesive and seamless finish with an easy installation, to help maximise space and offer lasting comfort and visual appeal.



Case studies

Various projects



Case study

Battersea power station





Kinley Commitment

Here for you every step of the way

Whatever unexpected challenges the year brings, we will be there to support you through every stage of your project.

Project support

Your vision is in safe hands with Kinley's technical experts who can support you from concept to handover, including material and product selection, and installation. You have the option to hold project meetings with our technical experts, virtually, on site or in our showroom, to discuss ideas and details. Overcoming challenges is what we do best and just because an item isn't yet in the catalogue, it doesn't mean we can't develop it!

Specifier support

You imagine the design, we'll recommend the right edging. Durable and flexible aluminium and prestigious steel edging provides endless scope for innovative, inspirational, award-winning landscape design. Our technical team can support with CPD Seminars, CAD drawings and data sheets, and tailored advice on specific product applications.

Contractor support

The successful completion of your inspiring landscape, on time and on budget, is vitally important to us. We hold good levels of stock so we can deliver to site when you need them. If you have bespoke requirements, we can flawlessly cut and pre-form specialised shapes and curves with our upgraded machinery. We'll happily visit you on site or via video conference for training or advice.

Continual professional development

There is a world of endless possibility with landscape edging – learn what you need to know to make amazing outdoor spaces possible. Kinley's CPD seminars are now available online or as a team booking. Find out more about our range of free training presentations (that also count towards your CPD).

Visit kinley.co.uk or call us on 01580 830688



Sustainability & Carbon Reduction

Sustainable landscape design is essential to mitigate the effects of rapid urbanisation. Kinley is leading the way with durable, recyclable metal landscape edging that gives landscape designers and architects free creative rein while reducing environmental impact.

Unlike traditional materials like timber, which deteriorate quickly in changing climates, Kinley's steel and aluminium edging offers long-term durability. This reduces the need for replacements, conserving resources and lowering overall carbon emissions.

Sustainable Material Choices

Steel and aluminium are not only robust but also environmentally friendly choices for landscape edging.

Durability

One way of making edging products more sustainable and reducing their carbon footprint is by increasing their durability, as this extends their lifespan and reduces how frequently they need to be replaced.

The legendary strength and resistance of steel ensure it outlasts edging materials such as timber, plastic and even concrete. Surface finishes that include powder coating and Corten weathering steel further enhance its corrosion resistance.

Aluminium is an extremely weather-resistant metal that shows little to no corrosion even when untreated. With its clean, modern aesthetics, it is the perfect choice for soft landscaping and pedestrian or light-traffic hard landscaping.

Recyclability

Steel and aluminium can both be recycled infinitely, reducing the demand for minerals mining and its carbon emissions and contributing to the circular economy.

In most instances, Kinley steel and aluminium edging can be installed on a compacted surface, using only metal fixings. This eliminates the need for a foundation or haunching made of concrete, which is a material that produces high carbon emissions to manufacture and cannot be recycled.

Carbon Reduction Initiatives

Kinley is committed to reducing carbon emissions through various strategic initiatives:

- By focusing on British manufacturing, Kinley shortens its supply chain, effectively reducing transportation-related carbon emissions.
- The reduced weight of metal edging products decreases the carbon footprint associated with storage, transportation, and on-site handling.
- To help fulfil its promise, Kinley is working with Positive Planet to measure and reduce its carbon footprint.

- Kinley's product Bison Kerbing has been certified by the Carbon Footprint Standard to save up to 52% in carbon emissions compared to traditional concrete edgings. This has been achieved through improvements in raw embodied material, distribution and disposal emissions.

These measures collectively contribute to a substantial reduction in the overall carbon footprint of Kinley landscaping projects.

Enhancing Urban Biodiversity

Kinley's products play a pivotal role in promoting urban biodiversity:

Green Roofs

Kinley's RoofEdge landscape edging facilitates the creation of green roofs, which aid in rainwater attenuation, enhance energy efficiency, and provide habitats for urban wildlife.

Rain Gardens and Urban Ponds

Rain gardens and urban ponds manage stormwater effectively and support diverse ecosystems. Kinley edging products are used to define different zones and prevent erosion between paths, firm soil, swamps and ponds.

By choosing Kinley's metal landscape edging products, landscape designers and architects can significantly contribute to creating sustainable urban environments that are resilient, biodiverse and aligned with contemporary environmental standards and goals.



Premium Edging Manufactured In-house to High Quality Standards

At our location in East Sussex, we manufacture all our products to extremely high specifications and quality control standards, with rapid delivery of small batch production being one of our key customer benefits.

Kinley is a group company of Kinley Systems Limited and when the need for landscape edging was recognised by the founders of Kinley, our objective soon was to manufacture in the United Kingdom, for several reasons.

- Reduce transport, improve our carbon footprint and our sourcing flexibility
- We can develop and improve products according to the UK market demands
- Nine stages of evolution before arriving at the current AluExcel design has given us a leading global product
- Edging without bias concerning material, aluminium and steel, Kinley can recommend what is best for the customer
- Great products, with total flexibility and control of QUALITY, PRICES and LEAD times!
- Opportunities to continuously develop new and better products for the future

Visit kinley.co.uk or call us on 01580 830688

Want to know more?

Here's how: Register for an online Kinley account for access to exclusive discounts and further technical support and advice.

kinley.co.uk

Sign up to our mailing list for inspiration, news and brand new product launches.

e: sales@kinley.co.uk

Let's get social!

Connect with us to start a conversation.





Westpoint
Compass Park
Junction Road
Robertsbridge
TN32 5BS

T 01580 830688
E sales@kinley.co.uk
kinley.co.uk