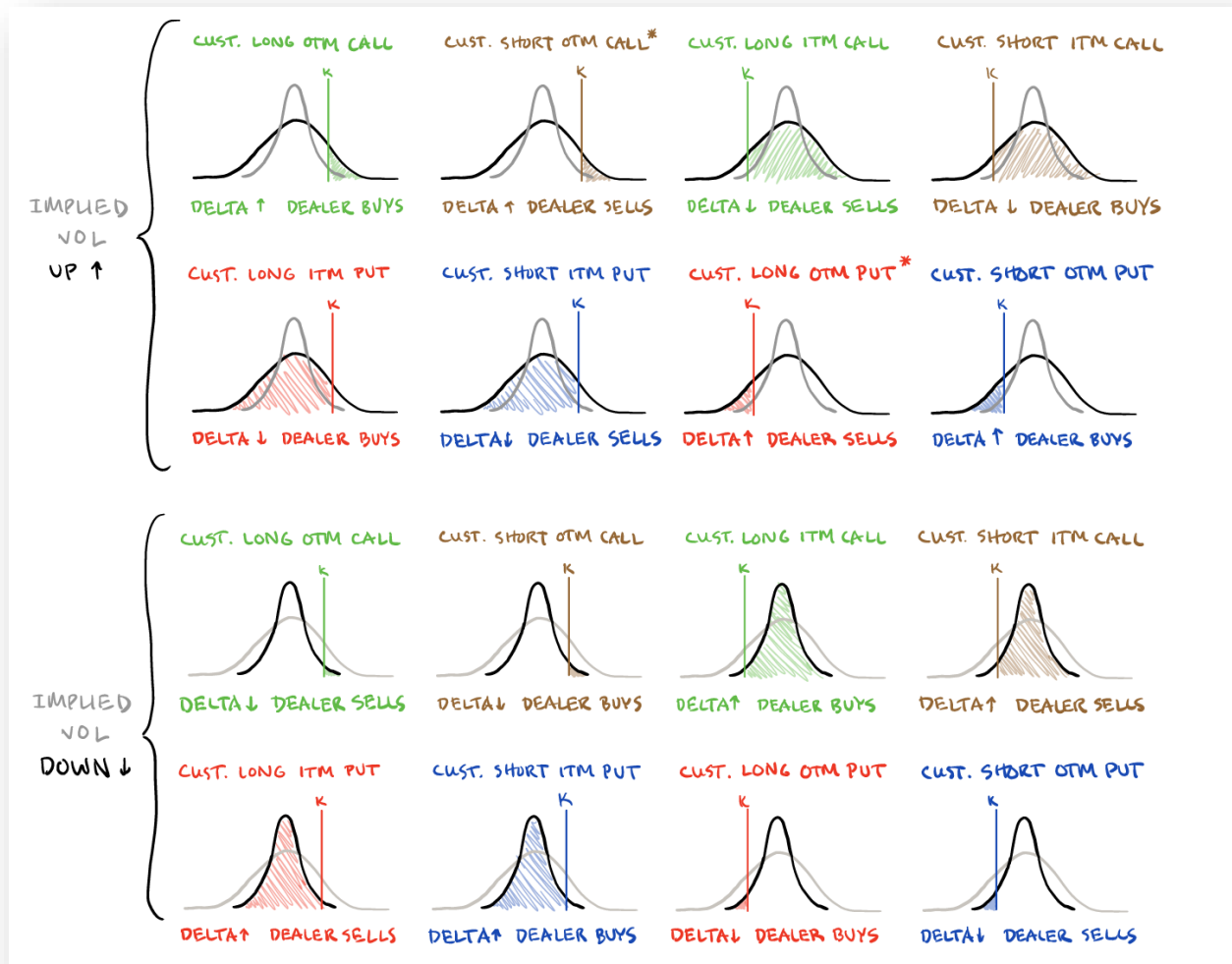


The following comes from SqueezeMetrics @ [https://squeezemetrics.com/download/The\\_Implied\\_Order\\_Book.pdf](https://squeezemetrics.com/download/The_Implied_Order_Book.pdf)

While we have presented the reading in its entirety, we want you to focus primarily on grasping the fundamental concepts. Read through pages 1-3 (focus on the first half), 6 & 7. I strongly recommend you print the graphic below from page 7, and think through these dynamics until they become intuitive:



The SqueezeMetrics writeup is **thematically correct on the mechanics of hedging**. This is what I want you to focus on at this point in the course.

## Some Points of Caution

---

Don't overthink the DDOI discussion on the second half of pp3. Squeeze veers off into a supposition that you can somehow analyze transaction-level data and come up with a pinpoint estimate of the exact number of contracts dealers are long and short across the OI. Is this realistic?

No.

What Squeeze means by "analyzing transaction-level data" is marking each trade according to whether its trade-price was closer to the bid or ask in the market at the time. Theoretically, this makes sense if the market functioned both perfectly and transparently, and all MM algos in charge of setting prices were sensitive to volume in a perfectly linear fashion (*not true, but too advanced for us here*)

In reality, we have to deal with complications like ->>

When a customer posts a limit buy and the order trades on the bid?

Customer-Customer trades?

Dealer-Dealer trades?

Complex strategies where leg prices are calculated (not tradable) by CBOE when posted?

**...and the big one-> FLOOR TRADING.**

SPX options are unique in that most flow of consequence is negotiated and routed to the trading floor where it is executed via open outcry. Once executed, a clerk (a living, breathing human-being) is tasked with tallying up and allocating the trade quantities. In practice, this takes several minutes (at best) and by the time the fill "hits the tape", the prices are "off-market"

Think through the following->

Broker A buys 1000 ATM 50 delta Puts for \$15; 10 traders sell 100 each

Each trader sells 100 e-minis against the trade -> market sells off ~2-3 points

Clerk allocates the blocks to each trader and routes the fills

Your algorithm/flow-spotter picks up the fill -> But... market is *lower* so the Put prices appear to be 'near' or 'below' the bid. How do you register this volume? Buy or sell?

This last problem alone renders it **fundamentally impossible to accurately estimate contract-level data**. In practice, unless you are clearing and settling the trades yourself at the OCC (*surprised there have never been leaks there!*) the best you can do is modify your interpretation of the GEX / VEX profile with an understanding of the current order flow dynamics and apply some fundamentally sound heuristics to help you along the way. We'll cover these later. GEX alone is a great starting point. But qualitative > quantitative, here, to some degree. Meaning -> having a simple yet accurate estimate of the magnitude (neutral, small, big, disaster), direction (pos/neg) and characteristics (getting more pos/neg, "0dte or longer lasting?", etc.) of GEX is going to help you make more money trading -> not over-analyzing contract-level OI data (*which is an exercise in futility*).

The other part I want you to be careful with is his attempt to explain March 2020 in terms of dealer positioning.

Like most non-institutional analysts, his reasoning gets murky when he attempts to chalk the movement up to dealer positioning (*he's partly right on the point -> murky on the mechanisms*) Namely, some of the writeup may lead you to believe that dealer 'long put' inventory (customers having sold too many puts to dealers) facilitated the dramatic sweep lower during that time.

As someone privileged enough (*...my cardiologist may say otherwise*) to have traded and risk-managed through the COVID-Crash -> **simply not true.**

We'll talk more about how VANNA played a role in this breakdown later -> but a cursory look at the VIX term structure in the beginning of December 2019 should help point out that **"dealers long too many OTM Puts that became ITM" was not the issue:**



For now -> enjoy the writeup. Focus on the hedging mechanics. The best way to make this make sense is by starting with a basic 20 Delta Long Call or Put. How does the dealer hedge that option position to start? If we move, how does the hedge change (gamma)? If futures are the same, but volatility goes higher (vanna), is your 20 delta call now MORE or LESS than 20 delta? So, what does a dealer have to do now to adjust for that impact? What if, all things equal, volatility goes lower? Do you see how the charm impact (delta bleed due to time) is similar to vanna (when volatility is decreasing, at least)?

These are the important dynamics to grasp intuitively when you are thinking about how dealers contribute to the market's total supply and demand for the index.

# GEX Ed.

"The Implied Order Book:"  
Measuring S&P 500 liquidity with SPX options

6 July 2020

The stock market is a ledger of who is willing to buy or sell stock and at what price. This ledger is called the **limit order book**, and it's what every trader is always competing to get a glimpse of, because it shows where there is supply and where there is demand.

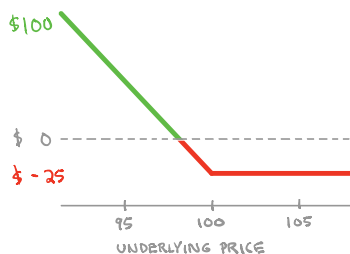
Over time, the limit order book has become more complex, more fragmented, and more abstract. Today, there are tens of trading venues, hundreds of order types with modifiers, and limitless algorithmic smart order routing systems, all with the express purpose of competing to get the best fill at the lowest total cost. But there is still, conceptually, one big limit order book that describes supply and demand, and the more of it that a trader sees, the better his edge.

## A LIMIT ORDER BOOK



Because of the competitive nature of the market, most of the liquidity that is visible is, in one way or another, a bluff. The information content of a quote, with respect to market liquidity, is either zero or less than zero. The slew of venues, order types, and algorithms, together with the winner-take-all effect of nanosecond quoting and exchange collocation, pretty much guarantee that you're never going to get a good picture of market liquidity by looking at trading venues' order books in the traditional sense. (You could sink \$50mm into data, research, and market access and that'd barely get you a seat at the table.) So we're not really interested in trying to extract an edge from trawling the ocean of dark liquidity or cutting a path through the jungle of exchange order types. No, what we're interested in is an enigmatic, decades-old order type that usually gets overlooked, but that, paradoxically, gives us a clearer view of market liquidity. That order type is the *option*.

THE PAYOFF OF A LONG AT-THE-MONEY PUT OPTION



Options are best known for the nonlinear payoffs that they offer to the investor. But for our purposes, what's far more interesting is how that payoff is synthesized. When you buy or sell an option, there is almost always a dealer on the other side of the trade, and that dealer is implicitly taking the inverse of your position. Because the dealer doesn't want the directional risk associated with that position, he hedges by taking a dynamic position in the underlying. The goal of that position is to replicate, as nearly as possible, the exact payoff of the option. So, for example, if you buy an at-the-money (ATM) put from a dealer, that dealer will start by short-selling about 50% of the notional value of the position (this is a 50-delta put). Then, if the underlying goes down, he will short-sell more; and if it goes up, he will cover (buy back) some of the short.

THE IMPACT OF A SHORT AT-THE-MONEY PUT OPTION ON THE LIMIT ORDER BOOK



THE IMPACT OF A LONG AT-THE-MONEY PUT OPTION ON THE LIMIT ORDER BOOK



This is called "delta-hedging," and above is the effect that it has on the market's order book. What's most important to note is that if you, the customer, **sell (short) a put** (and the same is true of selling calls), you are indirectly (through the agency of the option dealer) adding liquidity to the market. On the other hand, when you **buy a put**, you are effectively placing stop-loss orders above and below the market, which take liquidity (and, naturally, destabilize the market). In this context, it's easy to think of options as a sort of complex order type, and to view their effects as either providing or taking liquidity. But our interest is more than academic, so here's why we think all of this is actually worth understanding:

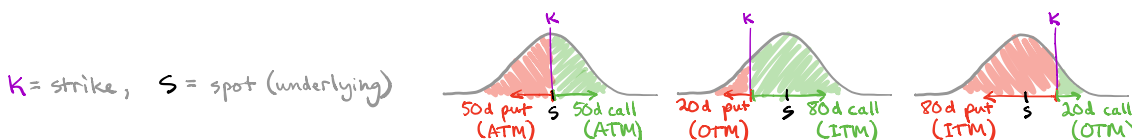
1. S&P 500 (SPX) options are the largest, most transparent part of the broad market's "order book."
2. We can measure, by analyzing transaction data, SPX dealers' actual option positions.
3. We can use the Black-Scholes model to calculate, in dollar terms, where delta-hedges must occur.

This means that we can build a uniquely information-rich "implied order book" simply by knowing how existing options must be hedged. From this, we will be able to see where option-originated liquidity is abundant, and where it is scarce. But first, we need to understand *deltas* a little bit better:

WHAT'S THE BIG IDEA? 💡

Liquidity is what determines how much the S&P 500 index is able to move. If we can measure liquidity, then we can forecast market volatility and crash risk.

The Black-Scholes delta of an option is a convention that takes an option price, assumes that the day-to-day movement of the underlying is normally distributed, and imputes a distribution of returns, from which we can derive a proxy for the probability that the option ends up in the money at expiration (*\*deep breath\**). But more to the point: The delta is also how much the option price will change per unit change in the underlying. For example, if an option has a delta of 30 (or 0.30), the price of the option contract should move about \$0.30 for every \$1.00 that the underlying moves. As the underlying price pushes the option further *in* the money, delta goes up. As the underlying price pushes the option further *out* of the money, delta goes down.



What we really care about, though, for the purposes of tracking liquidity, is *change in delta*. It's when an option's delta *changes* enough that an option dealer is compelled to re-hedge his exposure, and that means buying or selling the underlying. The fact that this hedging schedule is necessary to the survival of the dealer and fundamentally predictable in its disposition is what will allow us to build something that resembles a limit order book from option data.

So what causes option deltas to change?

Three things:

1. changes in *underlying price*
2. changes in *implied volatility*
3. changes in *time*



To options practitioners, these three delta sensitivities are known as . . . .

GAMMA, VANNA, and CHARM.

"TECHNICALLY..." *bd*

If you want to interject to say that dealers don't hedge to Black-Scholes deltas: Sure, everyone has proprietary adjustments, but this is irrelevant. Gamma isn't a 'convention'. Even a "model-free" approach to delta-hedging will have deltas changing with the underlying, IVs, and time.

To the extent that each of these factors exposes option dealers to delta risk, we want to measure these exposures. But even a rudimentary analysis of the three reveals that *charm* constitutes too small an effect to have practical utility. Where we're going, we don't need charm.

And so we're left with these two prospects:

Gamma exposure (GEX): An option dealer's delta sensitivity to changes in the price of the underlying.

Vanna exposure (VEX): An option dealer's delta sensitivity to changes in options' implied volatility.

But before we go about measuring the GEX and VEX of all S&P 500 (SPX) options, we have to acknowledge an interim step: The derivation of Dealer Directional Open Interest (DDOI).

EXPIRY	STRIKE	TYPE	VOLUME	OI	DDOI
2020-06-09	3000	Call	102	5200	+2630
2020-06-09	3000	Put	6	1846	-438

DDOI is a measurement of whether option dealers are short or long any particular option expiration, strike, and type. Because publicly reported open interest (OI) only tells us the number of contracts in existence on any given day, we have to delve into transaction-level data to assess the *direction* (buy/sell) of every SPX option trade and to bin it according to how it ought to affect open interest, and then finally, to *verify* trade direction by tracking the subsequent actual change in OI. Every option contract must be tracked through time in this manner to maintain an accurate picture of dealers' option exposures (DDOI). It's difficult, but by taking this step, a much more granular view of option-originated liquidity becomes possible.

With the benefit of DDOI, and the understanding that what we're trying to do is measure changes in options' deltas, **the only other thing we need is a function that returns the Black-Scholes delta**. With this handy function, we can not only compute the current delta of every existing SPX option, but we can also compute exactly how these deltas will change as the implied vol and index price change.

```

import numpy as np
from scipy.stats import norm

def delta(flag, s, k, t, r, v):
    d1 = (np.log(s/k)+(r+v*v/2)*t)/(v*np.sqrt(t))
    if flag == "C":
        return norm.cdf(d1)
    else:
        return norm.cdf(-d1) # +signed put delta

> Type = 'C' # call
> S = 97.65 # underlying
> K = 100.00 # strike
> T = 30/365 # 30 days to expiry (in years)
> R = 0.00 # "risk-free" rate
> V = 0.12 # 12 vol
> delta(Type, S, K, T, R, V)

0.250448229 ← a 25-delta call!

```

In the Python function to the left, all you have to do is plug in new values to  $S$  and  $V$  and you've found how much the option's delta changes with underlying moves and implied volatility changes. And if you know how much the delta changes with respect to these sensitivities, all you have to do is convert these deltas to shares (or dollars) and you already have a rudimentary "implied order book."

### Let's start with an example of gamma exposure (GEX).

Remember, gamma is an option's sensitivity to changes in underlying price, so in the function

above, we'll be modifying the  $S$  variable, and to bring the numbers into the problem domain of the S&P 500, let's imagine the index is trading at 3000 ( $S = 3000$ ). Let's also imagine that a fund just sold a 2900-strike put with one month to expiration ( $Type = 'P'$ ;  $K = 2900$ ;  $T = 30/365$ ), and that the option price implies a volatility of 20% ( $V = 0.20$ ). Finally, let's hold the "risk-free rate" ( $R$ ) at zero, because really, who cares? According to our Black-Scholes function, this option has a delta of 27.

That means that an SPX option dealer (for whom this is a long put position with short delta exposure to the market) must be long approximately 27 "dollar-units" of the SPX index. With the index trading at 3000, the dealer has to be long the S&P 500 to the tune of \$81,000 ( $\$3000 \times 27$ ) to be "flat" delta.

But what happens when the index falls 50 points to 2950? The new delta is 37. A delta of 37 means the dealer would need \$109,150 ( $\$2950 \times 37$ ) to be flat. This is an additional \$28,150 bid on the S&P 500 somewhere between 3000 and 2950. This seems useful to know! But it's also a bit vague, and a 50-point move is pretty arbitrary. What if, instead of dollars per 50 points, we solve for dollars per point? So, instead of  $S = 2950$ , let's look at what would happen if  $S = 2999$ . The answer is \$393: The option dealer needs to buy \$393 of the S&P 500 *for every point* the index falls, just to hedge this one put that a fund sold them. Due to the nature of gamma, this also means that the dealer will need to sell about \$393 of index exposure in the event of a 1-point move *up* (recall that when you sell an option, you cause the dealer to provide liquidity both on the way up *and* the way down).

So, \$393 is the GEX of that put option. **To find the GEX of the whole SPX option universe, we do what we did above for every option contract in dealer directional open interest (DDOI), and then simply add them all together.** The result can be a positive number or a negative number. A positive number means that customers (funds and the like) sold enough options to cause dealers to hedge in a way that provides *stabilizing* liquidity to the market. A negative number means the opposite—that customers are long more options, causing dealers to be "short gamma," and thus to always be *taking* liquidity, which is destabilizing.

```

> Type = 'P'
> S = 3000
> K = 2900
> T = 30/365
> R = 0.00
> V = 0.20
> delta(Type, S, K, T, R, V)

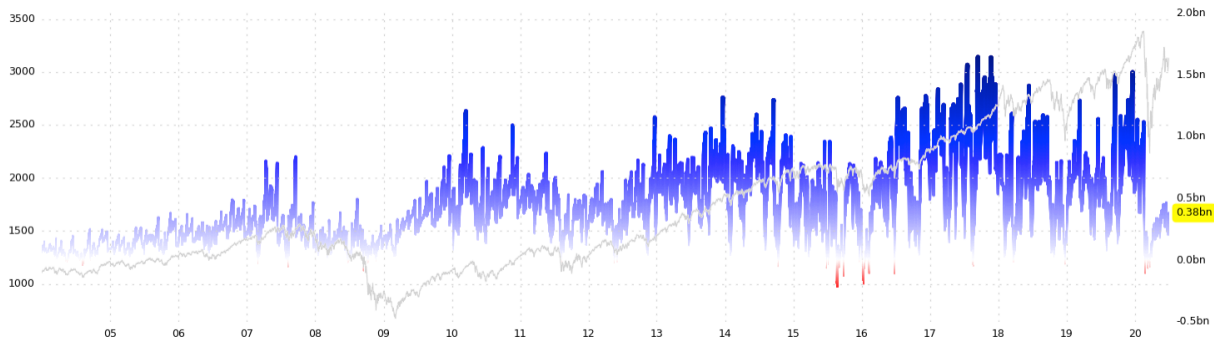
0.27

> S = 2950
> T = 29/365
> delta(Type, S, K, T, R, V)

0.37

```

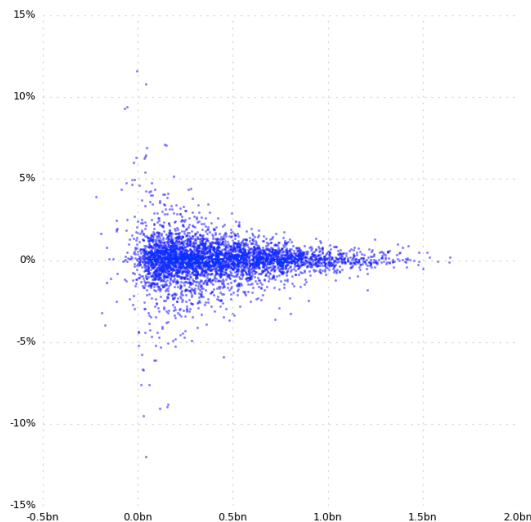
A thorough analysis of SPX GEX back to 2004 yields a surprising revelation, though:



GEX is *very rarely* **negative**.

And even when it *is* negative, it's never been below \$-200mm per SPX point. In the vast majority of cases, GEX shows us that SPX option dealers are providing a great deal of liquidity to the index—sometimes over **\$1 billion** per point. In the context of E-mini S&P 500 futures, that'd be around 6,666 E-minis per point (with SPX at 3000). That's a lot.

But if the proof of the pudding is in the eating, then **the proof of liquidity is in the volatility**. If there's merit to the idea that dealers' gamma exposure can be measured and that SPX options comprise a large portion of index liquidity, it should be very clear: There should be some statistical relationship between GEX and S&P 500 volatility. (And if there weren't you wouldn't be reading this.)



So observe the scatterplot to the right, which shows GEX against 1-day close-to-close S&P 500 returns. A pattern is readily apparent: Higher GEX means tighter returns. Because higher GEX means there's more liquidity, this makes perfect sense. Nor is this the *flaky* kind of liquidity that an HFT market-maker provides—this is high-quality, guaranteed liquidity. Hence the correlation.

**But there's a problem**, and you may have reasoned your way to it already. The problem is, "*What does zero GEX actually mean?*" Because in a way, it means nothing. It means that SPX option dealers are neither providing nor taking liquidity. And maybe that's useful to know, but it's not nearly as useful as being able to say, "*A billion dollars will prop up the S&P 500 if it falls just one point.*" And this theoretical uselessness is manifested in the plot: Extreme volatility has only ever occurred when GEX was near zero, but there's also a visible "clump" of very typical, non-volatile returns around zero. This is logical, because when GEX is near zero, it "allows" other liquidity-taking factors to dominate, where it would have stifled them before. But still, GEX is not *causing* that crazy volatility—the proximate cause must be something else. To find it, we tried asking the question: "*Why is GEX zero in the first place?*" Well, there are two reasons that GEX could be near zero. The first is that dealers could have a very small, or very balanced, inventory of options, giving them little exposure to moves in the index. This *is* a reason that GEX could be near zero, but it's *not* a reason to expect market volatility. The second reason for GEX to be near zero is if implied volatilities (IVs) are really high. Because higher IVs make GEX less significant.

IV ▲ GAMMA ▼ ???

When IVs go up, that means that the option-implied distribution widens.

A wider implied distribution means that changes in the underlying aren't as meaningful to delta.

Less sensitivity of delta to underlying moves = less gamma.

You heard that right: **When implied volatilities go up, gammas (and thus GEX) move toward zero.** Since we already know that high implied volatility is associated with high realized volatility, this seems like it could point us to the reason that sometimes zero GEX leads to volatility and sometimes it doesn't. It's a start, anyway.

**But now you'd have to explain how high IV actually causes liquidity to be taken from the market.** Remember, we're here to track the liquidity of the S&P 500 *vis-à-vis* its options, not to find some spurious correlation between VIX and realized volatility. So, buckle up, because this is where the going gets weird.

**The answer is vanna.** In the same way that there is a provable, logical, and clearly causal relationship between dealer gamma exposure and S&P 500 liquidity, there is also a causal relationship

between vanna exposure (VEX) and S&P 500 liquidity. Recall that VEX measures dealers' delta sensitivity to implied volatility. In the same way that option dealers must provide, or take, liquidity based on changes in underlying price, they must provide or take liquidity based on changes in implied volatility.

**For this, we'll need some more examples,** and this is where we return to our trusty Black-Scholes delta function, which will be able to tell us how and when changes in IV affect option deltas. Except this time, we're going to be playing with the  $V$  variable instead of the  $S$  variable. Imagine, though, that everything else is the same: A 2900-strike put sold by a fund and held long by a dealer. So with that established, what happens when IV rises from 20% to 25%? *Answer:* The dealer will have to increase his SPX position by 3 deltas to hedge the change, as the delta of his long put will rise from 27 to 30. This means buying \$9,000 of the index (\$3000 x 3) to flatten deltas. It should be clear already that VEX is going to have a smaller dollar impact on S&P 500 liquidity than GEX. But vanna's *size* is deceiving...

```
> Type = 'P'
> S = 3000
> K = 2900
> T = 30/365
> R = 0.00
> V = 0.20
> delta(Type, S, K, T, R, V)
0.27

> T = 29/365
> V = 0.25
> delta(Type, S, K, T, R, V)
0.30
```

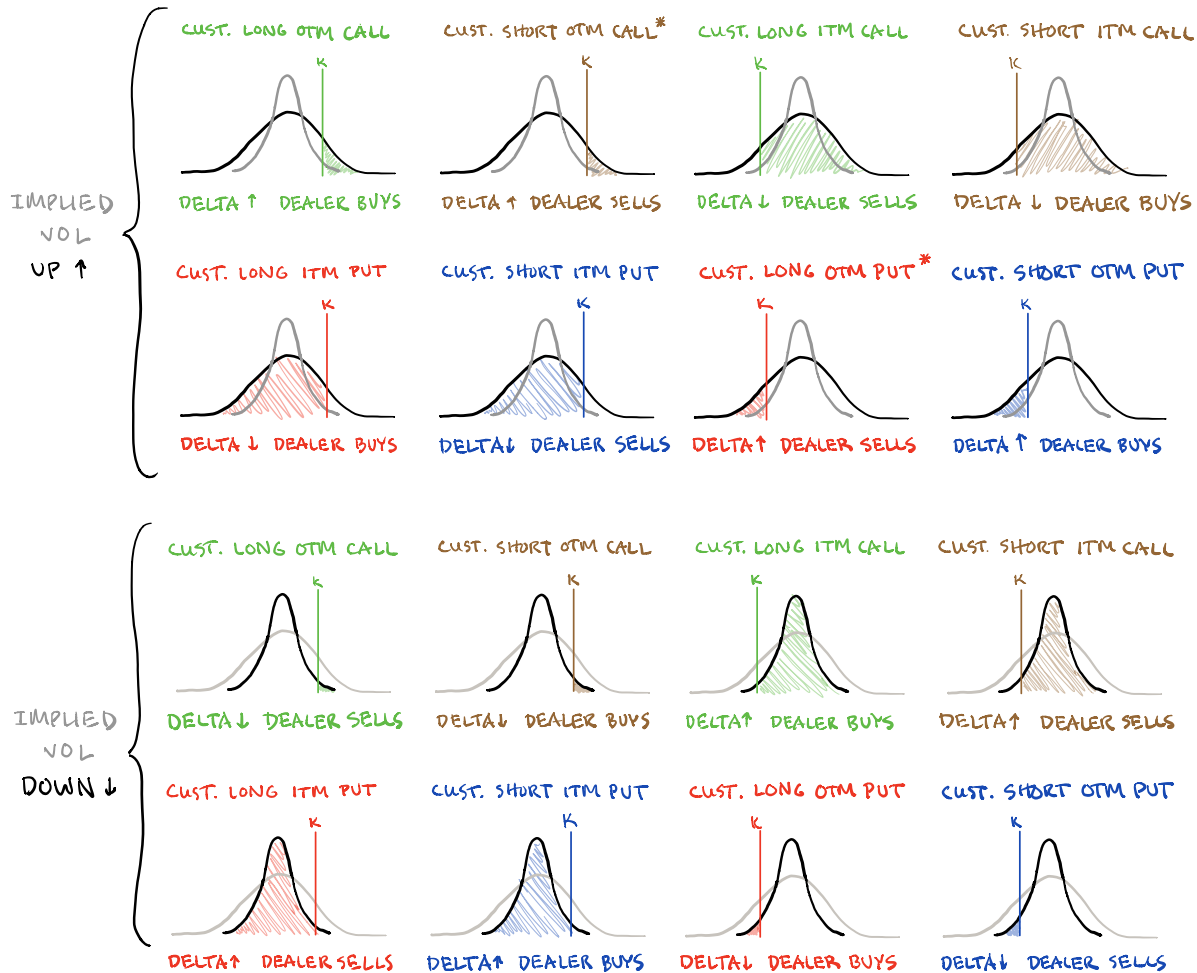
```
> Type = 'P'
> S = 2800
> K = 2900
> T = 30/365
> R = 0.00
> V = 0.20
> delta(Type, S, K, T, R, V)
0.72

> T = 29/365
> V = 0.25
> delta(Type, S, K, T, R, V)
0.67
```

**To start with, VEX is a much more dynamic problem than GEX.** See, GEX is simple: You sell an option and its gamma causes the dealer to *supply* liquidity to the market; you buy an option and the dealer has to *take* liquidity instead. Well, that's not how VEX works. So imagine if, instead of an out-of-the-money (OTM) put, a fund is short an in-the-money (ITM) put. This is reflected to the left, where the only variable we changed is  $S$ , lowering it to 2800 so as to switch the moneyness of the 2900-strike put. Now look what happened when IV ( $V$ ) went up: Instead of going up like before, the *delta went down*. This means that instead of buying, the option dealer must *sell* some of his S&P 500 exposure. Suddenly, a customer short put is causing liquidity to be taken instead of supplied. For VEX, moneyness matters.

To help this make a bit more sense, we have to return to our "option-implied distributions" so we can see why the deltas move the way they do. As usual, it makes perfect sense once you see the probabilities.

Ok, maybe it doesn't make *perfect* sense, but if you spend enough time looking at the cheat sheet below, you'll see exactly how IV, direction, and moneyness cause option dealers to buy or sell the underlying.



If you haven't already, now would be a good time to solidify in your brain that implied volatility is a measurement of market liquidity. IVs rise when liquidity is inadequate and fall when liquidity is abundant. In the context of gamma exposure, this is interesting, because when an option is sold, it increases GEX and lowers IV (IVs go down when people sell options), and when IVs go down, GEX goes up even more! So the process of selling an option features a two-pronged effect to increase GEX (add liquidity). You'd expect the effect of buying an option to be the exact opposite, but it's not: Though buying an option does, *per se*, decrease GEX, it also raises IV (IVs go up when people buy options), and a higher IV *reduces the negative GEX effect of buying options*. Taken together, this means that the liquidity-making impact of gamma is always multiplied, and the liquidity-taking impact is always tempered. This is why GEX is so rarely below zero! Thus, the net effect of gamma on the market is to supply liquidity—a stabilizing force.

If this all seems too rosy, that's because it is. The most common SPX option flows, post-2008, are customers buying OTM puts and selling OTM calls. This creates and sustains a momentum effect, whereby higher prices lead to higher GEX, and higher GEX improves top-of-book (nearby bid-ask) liquidity, and better liquidity means that dips always get bought. This works to keep volatility in check... until it doesn't. **Eventually, the effect of vanna overwhelms the effect of gamma, and that's when things get crazy.**

To see what we mean, look at the vanna cheat sheet above. There are two asterisks: Both are in the "IV UP" section. One is **customer short OTM calls**, and the other is **customer long OTM puts** (the biggest SPX flows). Note that both of these positions result in dealer selling when IVs rise. This is inherently unstable! We already know that IVs correspond to market liquidity, so when IVs rise, that's usually because liquidity is worsening (and the underlying is probably falling). Now add a bunch of option positions that are *guaranteed* to compel dealers to sell into a decline... this is vanna, gamma's evil twin.

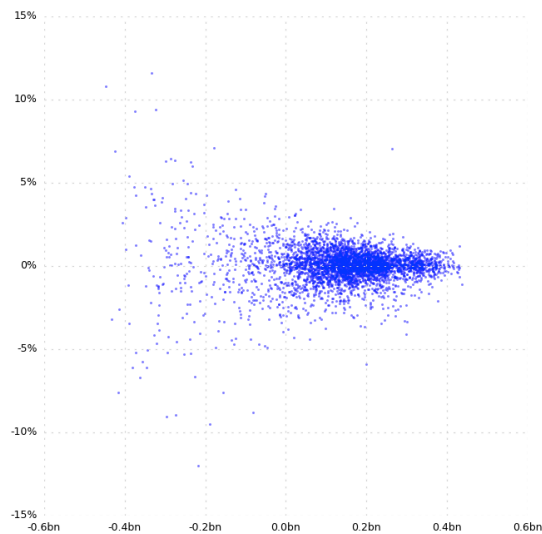
And so, in the same way that we quantified SPX GEX through history, let's do VEX:



Unlike GEX, VEX knows how to be negative. In late 2008, VEX was about \$-400mm per SPX point.\* This happened again during the 2020 "corona crash." It is not a coincidence that these were the most volatile, illiquid periods in recent history—negative VEX is the *cause* of sustained S&P 500 volatility in the era of SPX options (where the derivative tail invariably wags the index dog). And when you ponder the below scatterplot, you can see that sub-zero VEX strongly corresponds to elevated close-to-close SPX volatility.

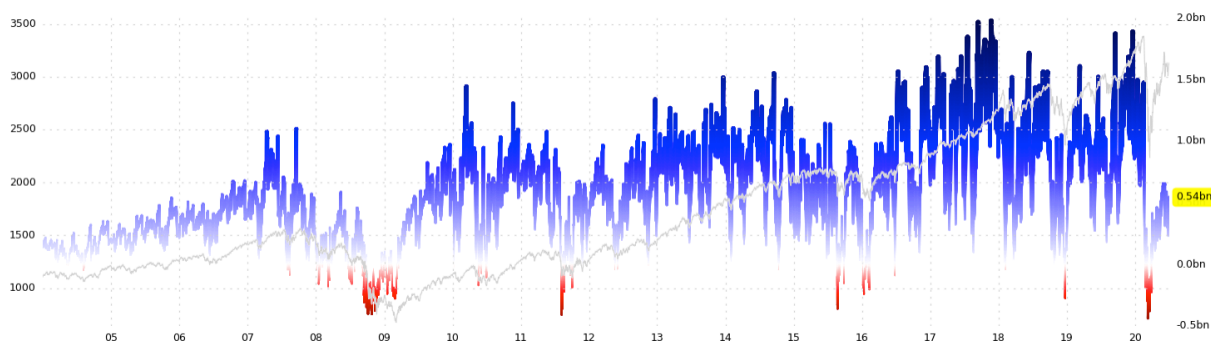
And this is why VEX is GEX's evil twin. GEX is capable of providing so much liquidity to the index that daily ranges tighten to an average of 0.20%. VEX, the other side of the same coin, is able to *take* so much liquidity *from* the index that average daily ranges rise to 6.00%! And by quantifying both of these dealer delta sensitivities in concert, we get the whole picture—the whole "implied order book"—that drives S&P 500 liquidity.

And what's *really* beautiful about quantifying this stuff is that it's all additive. Meaning, we can literally add VEX to GEX in order to get a full picture of option-originated top-of-book index liquidity. Convenient, no?



\* "Wait a minute," you think. "VEX is sensitivity to IV... you can't denominate VEX in 'dollars per SPX point' like you do with GEX." And you're totally right. In order to convert changes in IV to the equivalent changes in SPX, you have to first recognize that "dollars per SPX point" is the same thing as "SPX index units per 0.10% move." With that in mind, we can look at the historical relationship between daily changes in SPX vols versus changes in SPX spot. Luckily, there is a linear relationship, whereby vols tend to move 10x spot. Sure, the relationship exhibits gobs of heteroscedasticity when IVs are really high or really low, but what we need here is for a heuristic that copes well with conditions of uncertainty, and this is just the ticket. So VEX obliquely measures "dollars per SPX point" simply by measuring "SPX units" per 1.00% move (0.10% x 10) in vols across the board. Obviously, this works pretty well, so all you self-important vol pedants can sit down and zip it.

So let's do this: Let's add GEX and VEX together. And let's call it GEX+ ("GEX plus").



GEX+ ranges from \$2bn in provided liquidity all the way down to \$-500mm (in liquidity-taking). Over the last 16 years, it's clear that the impact of gamma and vanna on index liquidity has been pretty dramatic—an artifact of how options have obliquely become the "order type" of choice, i.e., the preferred method of offering and taking liquidity in the S&P 500. And viewing the scatterplot below, it should be no surprise that the index moves largely according to how much of this option-originated liquidity is available. Makes sense, doesn't it? All truly sophisticated market participants already understand this dynamic, and will at the very least, use implied volatilities (like VIX) as a proxy for gauging liquidity. And while VIX can never give us the full picture of option-originated liquidity, it has to at least get close. Why? Because if SPX option dealers routinely sold options too cheaply, they'd be out of business.

**And this leads us to our last point.** Notice that we just said that option dealers have to be careful not to sell options too cheaply. Selling options is a tough business, since you're on the wrong end of a derivative with a convex payoff, and even if you're hedging your deltas, you can end up very bankrupt if the market moves against you quickly. Proper risk-management is essential.

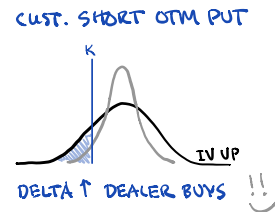
### So, what happens when people start selling options without the requisite skill-set?

Specifically, what happens when price-insensitive investors "collect premium" by selling puts on the SPX index? Everyone who's traded for more than a couple days intuitively knows the answer: **"Eventually, they'll blow up."** But we're not interested in common-sense trader wisdom—we're interested in being able to know *when* and *where* the over leveraged masses are going to start taking so much liquidity that they take the market down, because crashes always look the same: A crash happens when the conditional demand for liquidity below the market is larger than people think it is, and larger than prices imply. In terms of the order book, it's when there are tons of stop-losses below the market. One spark, one catalyst, and it's an unstoppable, illiquid chain-reaction.

**In terms of gamma and vanna, crash risk is a function of how many investors have sold puts, plain and simple.** Sold puts are, quite literally, a bunch of huge buy limit orders below the market, and then a bunch of liquidity-taking stop-losses further down. To understand why, think of gamma and vanna separately:



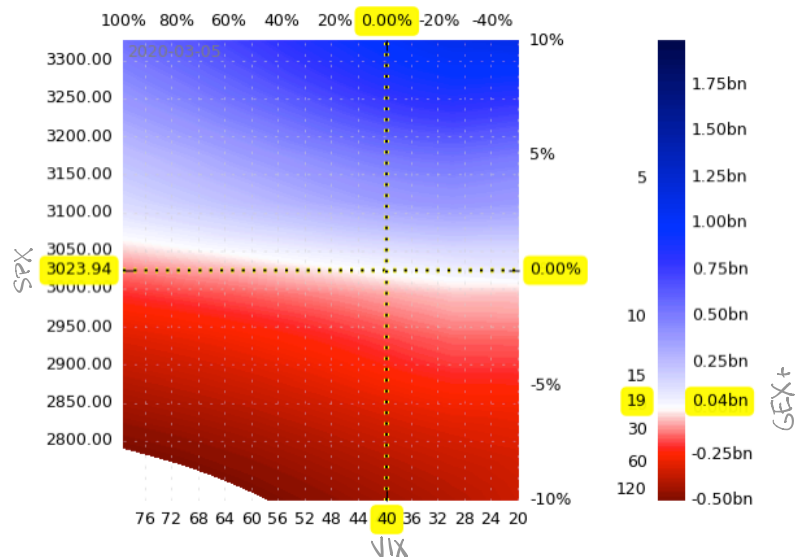
1. Selling a put creates dealer long gamma, which raises GEX and decreases volatility by improving top-of-book liquidity. Remember, any time you sell an option, you push GEX up.
2. Selling an OTM put also raises VEX, which also improves liquidity! So far, this seems pretty great. Not only will sold OTM puts cause dips to be bought (via GEX), but they will also cause increases in IV to cause SPX buying (via VEX). This literally means that if VIX (IV) spikes, option dealers *have* to buy the index. Talk about robust liquidity! But of course, there's a catch: If, for whatever reason, those customer-sold puts end up trading in-the-money (ITM), fickle vanna starts *demanding* liquidity whenever IVs rise. **And here's the feedback loop that crashes the market:** Liquidity deteriorates, IVs rise to compensate, and the rise in IVs, by virtue of the newly-ITM puts (negative VEX), demand that option dealers short more of the index. It becomes impossible to sate the latent demand for liquidity, and the selloff only ends when VIX is so high that it can only go lower. (Fun tidbit: When VIX *does* go lower, VEX will then force options dealers to buy just as much as they were forced to sell before. Cue insane bear market rallies!)



**IT CAN'T BE TRUE!!**

We've heard the argument a thousand times: "SPX options are only one small part of the dynamic and multifaceted volatility complex, so these correlations simply must be spurious!" And they go on to cite how there are volatility ETFs, and VIX options, and VIX futures, and variance swaps, and volatility swaps, and autocallable notes, etc. There's just one problem: All of these instruments, to the extent that positions are not risklessly paired off between two counterparties who want the exposure, are hedged in SPX options. Varswap? Replicating strip of SPX options. Volswap? A dynamic SPX straddle. VIX futures? A lot like a volswap, but who the heck knows what those dealers are doing. In any case, risk doesn't somehow disappear when banks facilitate volatility trading — it all ends up in SPX options.

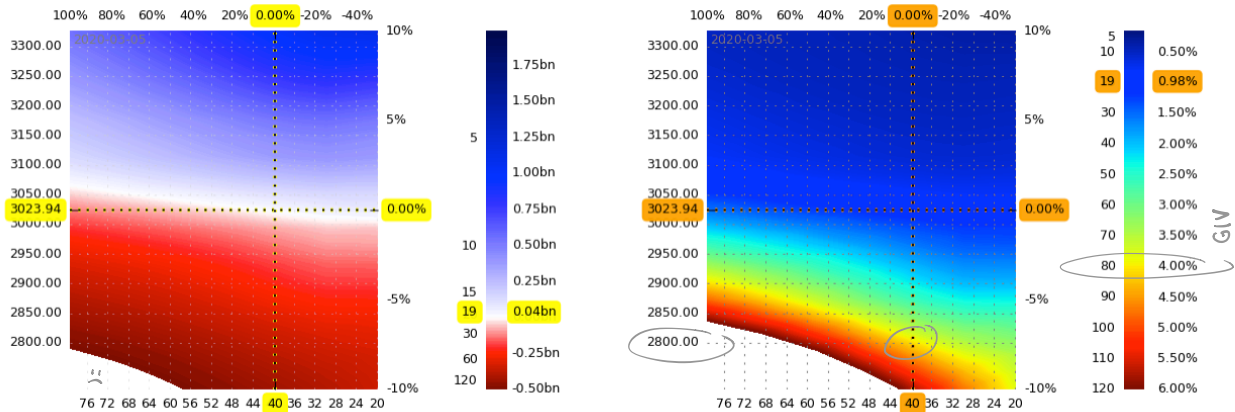
So now let's take the final step. It's never enough to know the current liquidity situation in the market. To make good decisions, **we need to know about conditional liquidity.** Will there be buyers or sellers if the S&P 500 falls 5%? How about 10%? What will happen to VEX liquidity if VIX goes up 20 points? What if it goes *down* 10? To know all of this, we need to draw a "map" of the order book, and by extension, a map of future liquidity and volatility. We want to know where, exactly, option-originated liquidity is scarce or abundant. And that map looks like this:



The map above is from March 5th, 2020, just before the S&P 500 began its second leg down. The red region is where GEX+ becomes negative, and where option dealers begin taking liquidity. In other words, it's where the stop-loss orders sit, and on March 5th, any movement below 3000 SPX was a break into the illiquidity zone. But much more disconcerting than the "red zone" itself is the fact

that the map ends!

To see what we mean, look at the bottom-left of the map, where SPX is below 2800 and VIX is above 60. No color corresponds to that area because at that moment in time, the demand for liquidity at those levels would be so high (GEX+ would be below \$-500mm) that there's simply no historical analog. And to get a more granular view, look at the corresponding map of gamma-implied volatility (GIV) to the right. If we imagine that SPX were to fall another 7.5% to 2800, even if VIX remained unchanged, we'd be in the yellow zone. The yellow zone, according to the color key, implies 80 vol, or 4.00% average daily moves. That is some scary stuff right there.

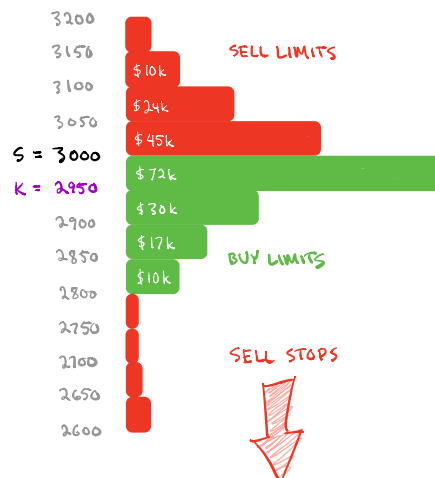


Another: If you imagine that SPX fell to 2800 and VIX rose to 64, gamma-implied vol would be 120, or 6.00% average daily moves. This is what we call the vol market being "offside." And by that we mean that VIX cannot possibly price volatility / liquidity correctly, since simply by moving up, VIX causes liquidity to deteriorate (yes, vanna is scary), and that means VIX will be underpriced all the way up to 80 or whatever. Like we said before, when customers have sold too many puts, crashes become feedback loops, where latent demand for liquidity outstrips supply, and the crash only ends when IVs can't possibly go up more.

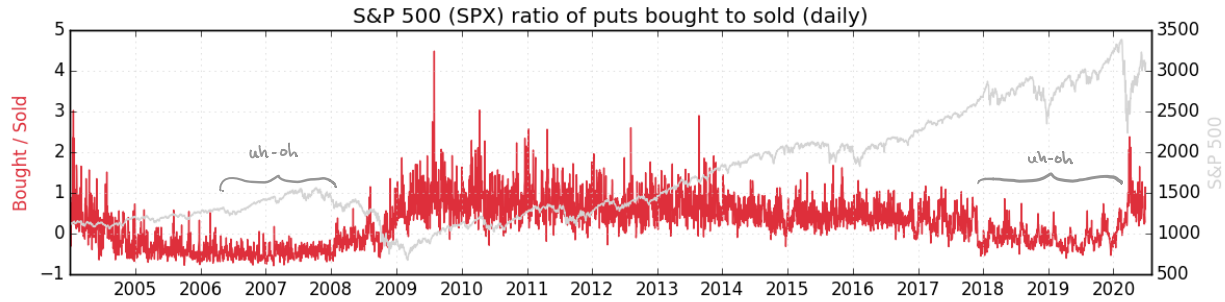
You may recall that, somewhere up there, we noted how customer long OTM puts are one of the most common positions. By comparison, short puts (which cause crashes) are rare. But before we talk about how rare they are, let's clarify why customer long puts don't cause crashes. You already know that a long put position is short dealer gamma, and thus pulls GEX down, and you also know that lower GEX means worse liquidity and more volatility. This sounds bad. But since the worst kind of illiquidity is always a function of VEX, take a look at the VEX effects of a customer long put option after it becomes ITM (cheat sheet, four pages up). As IVs rise, a long ITM put causes the option dealer to buy the underlying. This means that, when things get really bad, long puts actually end up adding a bit of liquidity. This means that the effect of customers buying put protection tends to be short, sharp corrections—not crashes.

To verify that this is indeed the way things work, you need only chart out the ratio of SPX puts bought to sold over time. When put-selling becomes the norm, crashes happen.

THE IMPACT OF A SHORT OUT-OF-THE-MONEY PUT OPTION ON THE LIMIT ORDER BOOK



Somewhere down here is either Fed liquidity or a Hobbesian state of nature.



This is full of irony.

Ironically, bought puts, despite ostensibly being a liquidity-taking order type, and despite obviously reducing top-of-book liquidity, end up actually *adding* a small amount of liquidity (book *depth*) to the market when things really start falling apart.

Ironically, the only thing that can really cause those 20% to 30% declines in the market is when *so many people* sign up to provide liquidity via put sales that *a mere sign of the scarcity of liquidity* (IV going up) automatically withdraws that liquidity from the market *right when it's needed most*.

But hey, whenever something as simple as the supply and demand of a market's limit order book becomes so abstracted, you should *expect* to see little ironies like this, where everything is suddenly turned on its head. Of course, the underlying truths of the order book will never change—options are just one way to take and supply liquidity. What's dangerous, though (for us *and* for the whole market), is when we conceptually distinguish options and their underlying. They are not distinct. Now more than ever, options *are* the order book.

Hopefully, the concepts of GEX, VEX, and the "implied order book" provide a tidy new framework with which to understand index liquidity, its drivers, and what that means for the stability of the broad market.

For free historical GEX, VEX, and GEX+ data,  
drop us a line at [research@sqme.co](mailto:research@sqme.co).

© 2020 SqueezeMetrics