

## NM1

### User Manual

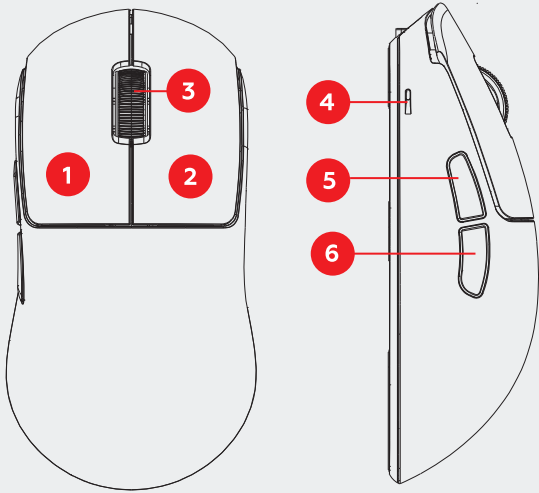
Thanks for trusting Nubi and congrats on getting your new Nubi NM1 Wireless. Welcome to the family!

This ultra-light gaming mouse weighs just 39 grams and has no holes in the shell. Inside, it features the amazing PAW3395 gaming sensor by PixArt and durable, satisfying Huano Transparent Blue Shell Pink Dot switches rated for 80 million clicks. On top of that, the reliable TTC Golden Dust Proof encoder guarantees crisp detents and faultless performance, and the small yet capacious battery provides long run time while keeping the device light.

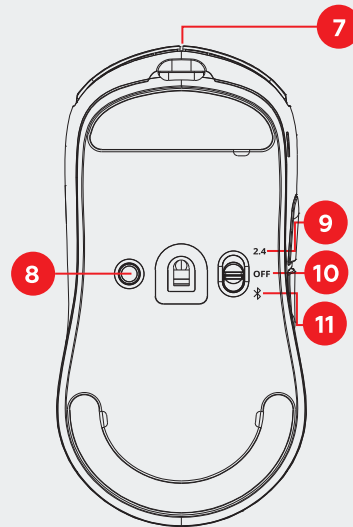
At Nubi, we believe that high-quality gaming gear and cutting-edge technology should be accessible to everyone. That's why we packed Nubi NM1 with the affordable yet very powerful PixArt PAW3395 sensor for smooth performance across all games, combined with an ultra-light chassis and reliable internals for comfort and outstanding results. No cutting corners, no breaking the bank.

We're confident you'll love your new gaming mouse. If you have any questions or issues with your order, just drop us a line at [help@nubi.gg](mailto:help@nubi.gg)—we'll take care of you.

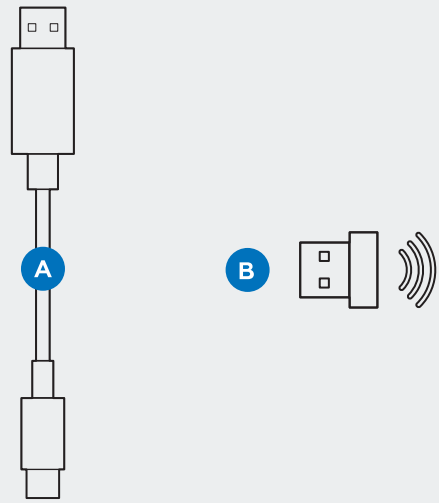
Your Nubi Team ❤️



- 1 Left Mouse Button
- 2 Right Mouse Button
- 3 Scroll Wheel
- 4 LED Indicator
- 5 Forward Button
- 6 Backward Button



- 7 USB-C Port
- 8 CPI Switcher Button
- 9 2.4 GHz Wireless Mode
- 10 Power Off
- 11 Bluetooth Wireless Mode



- A USB Type-A to Type-C Cable
- B USB-A 2.4 GHz Receiver

#### CPI MODES – LED INDICATION

Press the CPI button **8** to switch CPI levels:

- 800 CPI – Yellow
- 1200 CPI – Turquoise
- 2000 CPI – Green
- 5000 CPI – Violet
- 8000 CPI – Red
- 12000 CPI – Blue

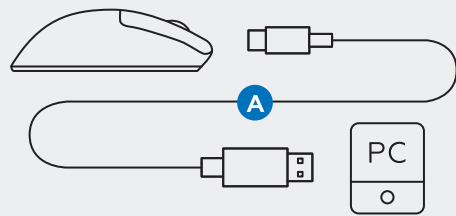
#### BATTERY STATUS – LED INDICATION

- Flashing Red – Battery low, please charge the mouse
- Flashing Orange – Charging in progress
- Solid Green – Charging complete

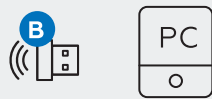
**It is strongly advised not to charge the device from a wall outlet.**

#### CONNECTION MODES:

**1. Wired Mode / Charging** - Connect the USB-A to USB-C cable.



**2. Wireless Mode 2.4 GHz** - Set the switch to position **9**.



Recommended distance to receiver: < 2m.  
Max range: > 10m.

**3. Wireless Mode Bluetooth** - Open the Bluetooth settings on your device and start searching for new devices. Switch the mouse toggle to position **11**, then press and hold buttons **1**, **2**, **3** at the same time. The mouse will then enter pairing mode and become available for connection.

#### SOFTWARE

CPI and polling rate (up to 26000 CPI and 1000 Hz) can be adjusted in the Nubi software.

Download the software from: [nubi.gg](https://nubi.gg)

#### NOTE:

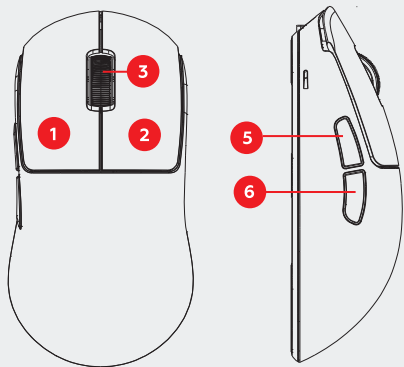
The software only supports device connection via 2.4 GHz wireless or USB cable. In Bluetooth mode, the mouse is not recognized by the software.

The software is provided as an .exe installer and is compatible only with the Windows operating system. Devices running other operating systems (e.g., Linux or macOS) are not supported.

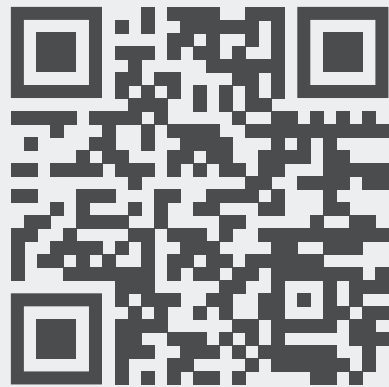
#### DEEP SLEEP MODE:

If your mouse is inactive for 5 minutes straight, it will automatically switch to Deep Sleep Mode to save energy.

To wake up the mouse from Deep Sleep Mode, please click on any of the buttons listed below.



#### SUPPORT



[help@nubi.gg](mailto:help@nubi.gg)

If you have any questions about your order or the mouse itself, just drop a message to our support team—we'll make sure to sort it out for you.

#### MANUAL & DRIVER



[nubi.gg/drivers](https://nubi.gg/drivers)

FR Manuel d'utilisation DE Benutzerhandbuch  
ESP Manual de usuario BG Ръководство за потребителя FI Käyttöohje NO Brukerhåndbok  
TR Kullanım Kılavuzu SE Användarhandbok DK  
Brugervejledning SK Užívateľská príručka PL  
Instrukcja obsługi CZ Uživatelská příručka LV  
Lietotāja rokasgrāmata UA Посібник користува-  
ча RS Корисничко упутство HR Korisnički  
priručnik RO Manual de utilizare

#### DISPOSAL INFORMATION

The crossed-out wheelee bin symbol means that you must not dispose of this product together with unsorted household D waste. As electrical devices can contain harmful substances which may cause environmental damage or harm to your health if not disposed of correctly, please dispose of these products separately. As the end user, you are required by law to dispose of used electrical equipment at an official recycling point. For information about local recycling points, contact your local authority, civic amenity site or the business where you purchased this product. By disposing of electrical products at an official recycling point, you are doing your part to ensure equipment is recycled correctly and professionally, and the environment is protected. Wherever possible, remove any batteries before disposing of the device. Under law, as the end user you face risk of penalties if you dispose of devices and batteries illegally. Correct Disposal of This Product (Waste Electrical & Electronic Equipment, Applicable in the European Union and other European countries with separate collection systems). This marking shown on the product of its documentation indicates that it shouldn't be disposed with other household wastes at the end of its working life. To prevent possible harm to the environment or human health from uncontrolled waste disposal, please separate this from other types of waste and recycle it responsibly to promote sustainable reuse of material resources. Household users should contact either the retailer from whom they purchased this product, or their local government office, for details of where and how they can take this item for environmentally safe recycling. Business users should contact their supplier and check the terms and conditions of the purchase contract. This product should not be mixed with other commercial wastes for disposal.

#### IMPORT INFORMATION

Purpose of product: computer accessory  
Connection: 1 x USB  
Product material: plastic/metal/rubber  
Used for: entering information into a personal computer  
Please check with your local authorities for shipping regulations before shipping.  
Manufacturer:  
Nubi LTD, Office 3906, 39th, The Center,  
99 Queen's Road, Central, Hong Kong  
Importer: EU Importer: FS-Holding Ltd, Profitli Iliia 4,  
Germasogeia, Limassol, Cyprus, 4046,  
E-mail: [care@fragstore.com](mailto:care@fragstore.com), Tel: +35-725-26-01-66  
The importer is responsible for processing claims from buyers.  
Made in China  
Date of manufacture: indicated on the package  
Serial number: indicated on the package

