

**LEGEND:**

- Concrete
- Asphalt
- Sod
- Existing Tree
- Proposed Elevation
- Existing Elevation
- Proposed Vegetation

- Landscape Notes**
- Dimensions are shown in meters unless noted otherwise. Do not scale drawings.
  - Contractor to review layout on site with Landscape Architect prior to commencing work.
  - Contractor to verify grades and identify discrepancies prior to initiating work. Report any changes, discrepancies, or substitutions to the Landscape Architect for review prior to work.
  - It is the contractor's responsibility to locate and verify all existing utilities and services prior to construction.
  - Plant material support systems must be removed by the contractor at time of final acceptance. No extras will be paid to complete this work.
  - Contractor to provide minimum one (1) year warranty from date accepted on all work unless otherwise specified.
  - Grading and servicing shown is for information purposes. For grading and servicing information refer to engineering drawings.
  - For lighting information and power distribution refer to the electrical drawings.
  - Drawings are for construction only if Landscape Architects stamp is signed and dated by the Landscape Architect, and plans are approved by the Municipality.
  - Tree planting within the municipal right-of-way to be undertaken by the Municipality unless noted otherwise.
  - Unless otherwise specified all landscaped areas are to be sodded.
  - Unless otherwise specified, all undeveloped areas shall be undisturbed and kept free and clear of debris.
  - The Owner is to be aware of the Migratory Birds Convention Act, 1994. This Act is implemented by Environment Canada and the Owner is to make every effort to avoid removal of vegetation from the period of March 31st to August 31st.

**STAMP:**

2024-08-14  
NOT FOR CONSTRUCTION

**WHITEHOUSE URBAN DESIGN**  
LANDSCAPE ARCHITECTS & URBAN DESIGNERS

**REVISIONS / SUBMISSIONS**

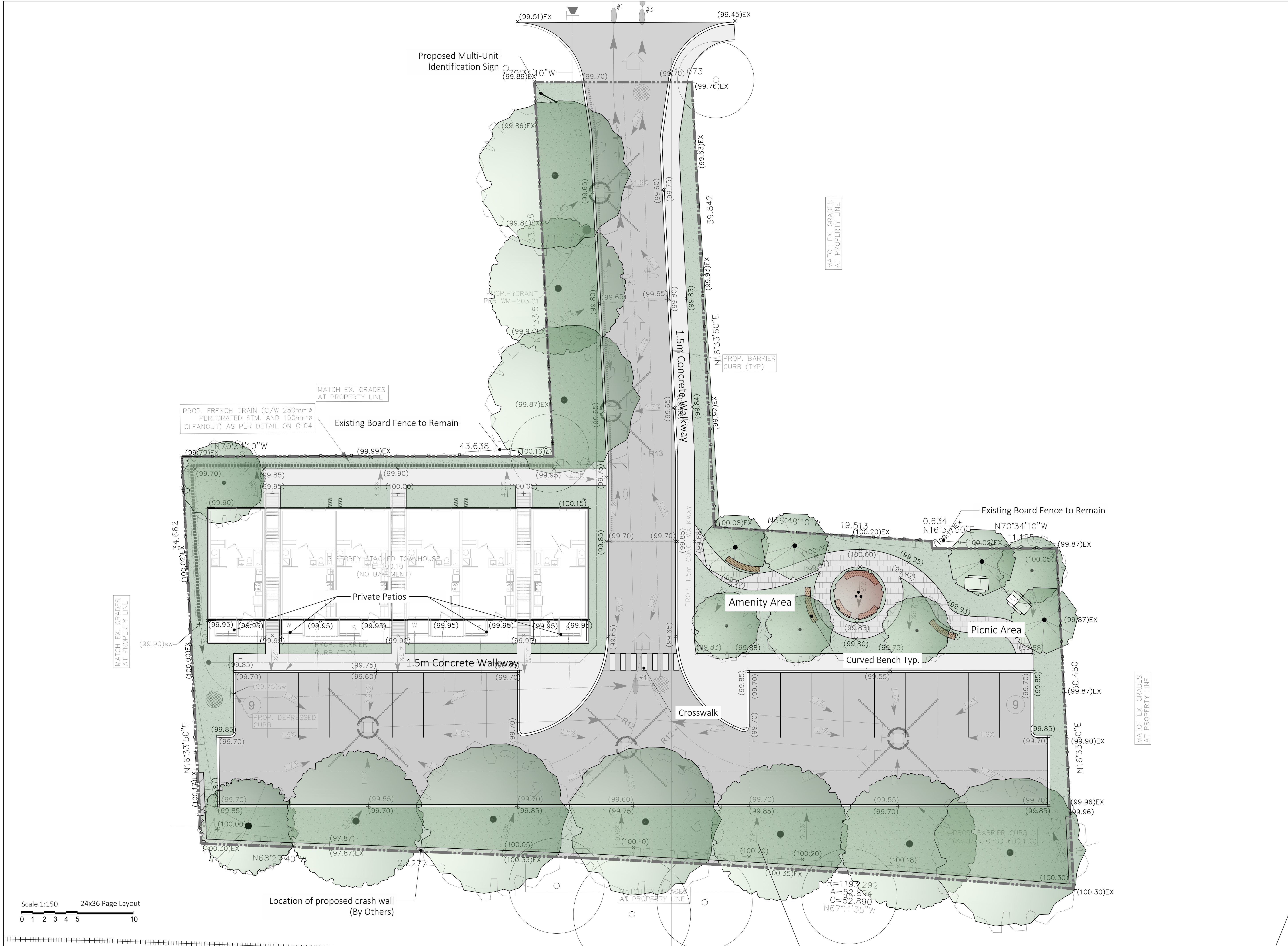
NO.	DESCRIPTION	DATE:
4	For ZBA Resubmission	2025-07-14
3	For ZBA Resubmission	2023-05-05
2	For ZBA	2022-04-19
1	For Client Review	2022-03-28

**CLIENT:**  
2115616 Ontario Inc.

**PROJECT TITLE:**  
338, 338 1/2 Cumberland Ave.,  
Hamilton, Ont.

**SHEET TITLE:**  
Landscape Concept

**DWG No. L1** DRAWN BY: AP  
**SHEET No. 1 of 2** DESIGN BY: LWS and AP  
**PROJECT No: 047-21** CHECKED BY: LWS  
**SCALE:** As shown **NORTH ARROW:** N

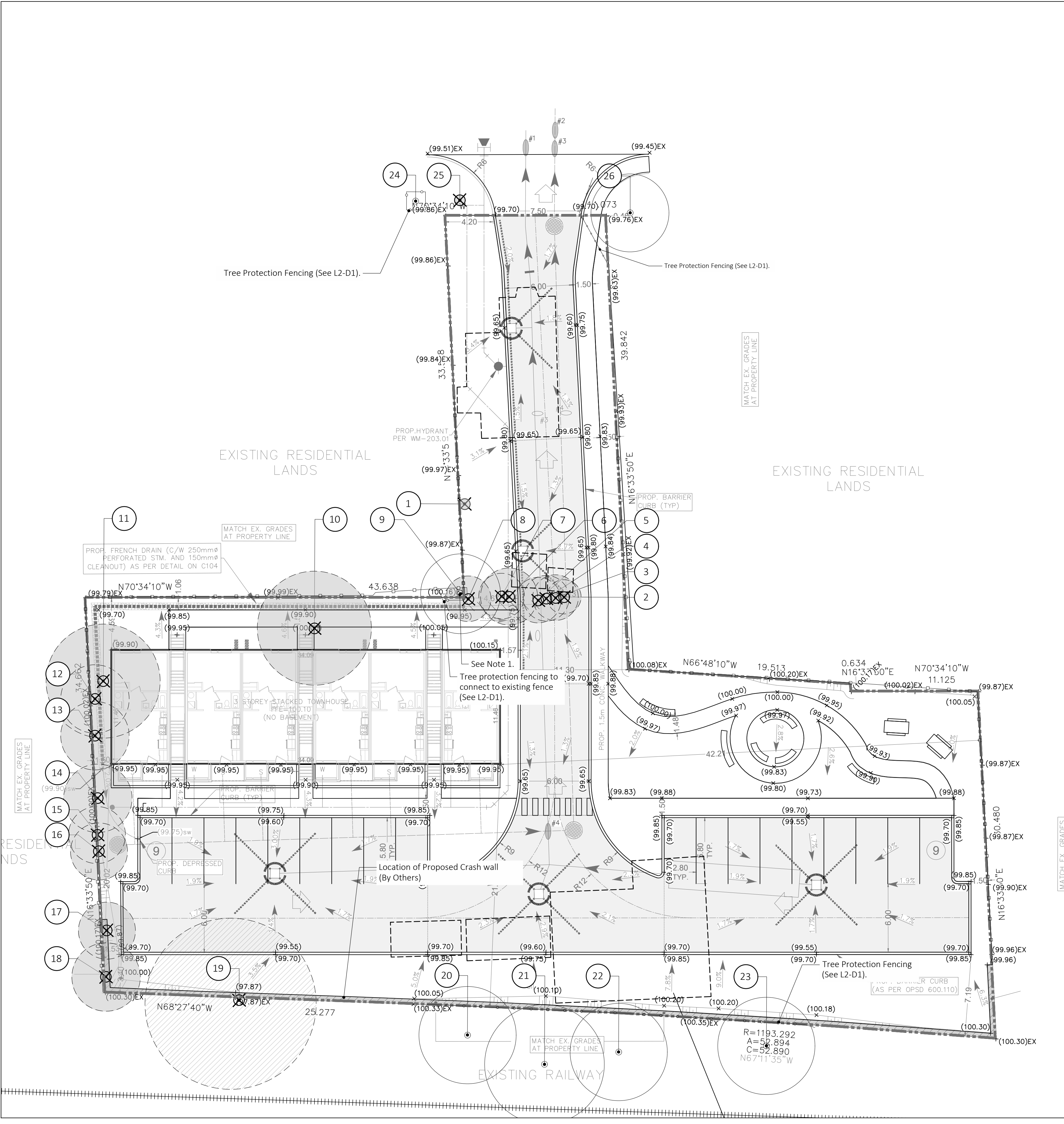


Scale 1:150 24x36 Page Layout  
0 1 2 3 4 5 10

Location of proposed crash wall  
(By Others)

# Tree Protection Plan

# Tree Inventory

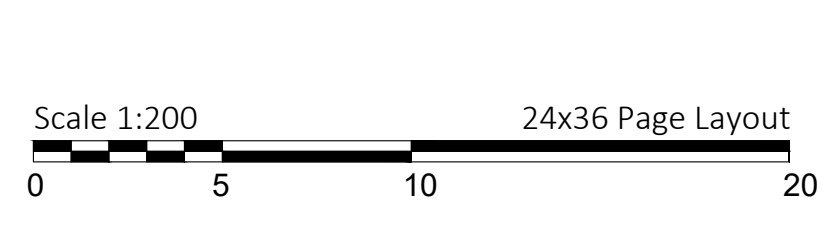
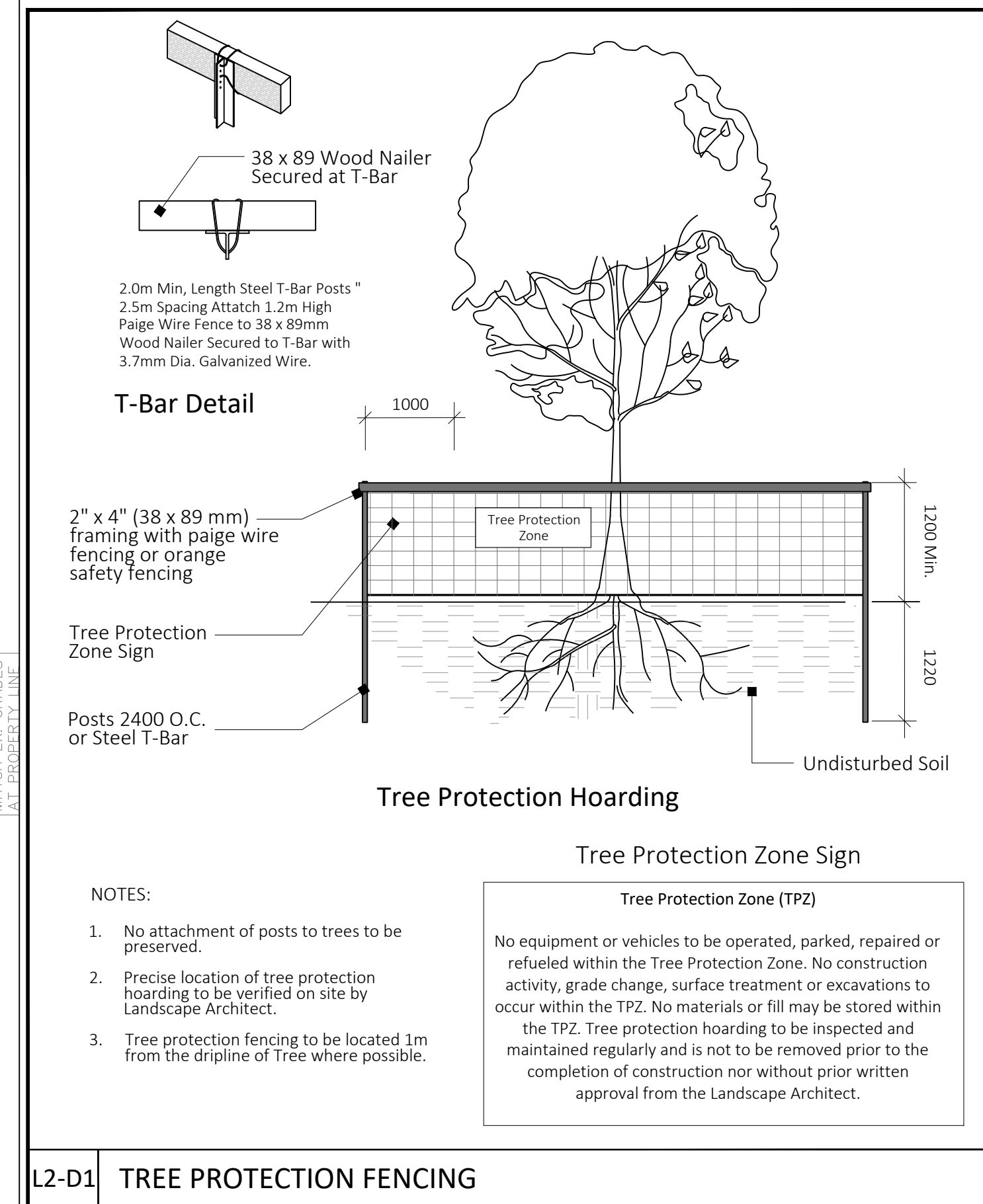


Tree #	Botanical Name	Common Name	Dia. (cm)	Health Condition	Structural Condition	Ownership	Comments	Recommendation: Rationale
1	<i>Acer platanoides</i>	Norway Maple	25	Poor	Poor	Private		REMOVE: Within footprint of Drive Aisle and Sidewalk.
2	<i>Acer platanoides</i>	Norway Maple	25	Poor	Poor	Private		REMOVE: Within footprint of Drive Aisle and Sidewalk.
3	<i>Acer platanoides</i>	Norway Maple	20	Poor	Poor	Private		REMOVE: Within footprint of Drive Aisle and Sidewalk.
4	<i>Acer platanoides</i>	Norway Maple	40	Poor	Poor	Private		REMOVE: Within footprint of Drive Aisle and Sidewalk.
5	<i>Acer platanoides</i>	Norway Maple	40	Poor	Poor	Private		REMOVE: Within footprint of Drive Aisle and Sidewalk.
6	<i>Acer platanoides</i>	Norway Maple	35	Poor	Poor	Private		REMOVE: Within footprint of Drive Aisle and Sidewalk.
7	<i>Acer platanoides</i>	Norway Maple	25	Poor	Poor	Private		REMOVE: Within footprint of Drive Aisle and Sidewalk.
8	<i>Acer platanoides</i>	Norway Maple	25	Poor	Poor	Private		REMOVE: Within footprint of Drive Aisle and Sidewalk.
9	<i>Acer platanoides</i>	Norway Maple	60	Poor	Poor	Adjacent Property		PROTECT
10	<i>Acer platanoides</i>	Norway Maple	80	Poor	Poor	Private		REMOVE: Within footprint of Drive Aisle and Sidewalk.
11	<i>Acer negundo</i>	Manitoba Maple	50	Poor	Poor	Private	Hazardous Lean	REMOVE: Poor Health/Condition.
12	<i>Acer negundo</i>	Manitoba Maple	50	Poor	Poor	Private	Hazardous Lean	REMOVE: Poor Health/Condition.
13	<i>Acer platanoides</i>	Norway Maple	35	Poor	Poor	Private	Heavy Lean	REMOVE: Poor Health/Condition.
14	<i>Acer platanoides</i>	Norway Maple	30	Poor	Poor	Private		REMOVE: Within area of significant grading.
15	<i>Fraxinus spp.</i>	Ash	30	Poor	Poor	Private	Low Quality Species	REMOVE: Within area of significant grading.
16	<i>Acer platanoides</i>	Norway Maple	30	Poor	Poor	Private		REMOVE: Within area of significant grading.
17	<i>Acer platanoides</i>	Norway Maple	25	Poor	Poor	Private		REMOVE: Within area of significant grading.
18	<i>Acer negundo</i>	Manitoba Maple	40	Poor	Poor	Private		REMOVE: Within area of significant grading.
19	<i>Acer platanoides</i>	Norway Maple	50, 45	Fair	Fair	Adjacent Property		RECOMMENDED REMOVAL: Prior to removal of the adjacent tree written approval by owner will be provided to the City under separate cover.
20	<i>Acer platanoides</i>	Norway Maple	15, 20	Fair	Fair	Adjacent Property		PROTECT: Betterment of existing conditions.
21	<i>Acer platanoides</i>	Norway Maple	25, 20	Fair	Fair	Adjacent Property		PROTECT: Betterment of existing conditions.
22	<i>Acer platanoides</i>	Norway Maple	15, 20	Fair	Fair	Adjacent Property		PROTECT: Betterment of existing conditions.
23	<i>Acer platanoides</i>	Norway Maple	20, 25	Fair	Fair	Adjacent Property		PROTECT: Betterment of existing conditions.
24	<i>Malus "Spring Snow"</i>	Spring Snow Crabapple	7cm	Good	Good	Public		PROTECT
25	<i>Prunus serrulata "Kwanon"</i>	"Kwanon" Cherry	15	Good	Good	Public		REMOVE: Within footprint of Sidewalk.
26	<i>Picea pungens</i>	Blue Spruce	60	Good	Good	Public		PROTECT

**Tree Removal Statement and Compensation Statement**

3 Three municipal trees were inventoried as part of this application. Of those three, two are to be retained and one is recommended for removal.

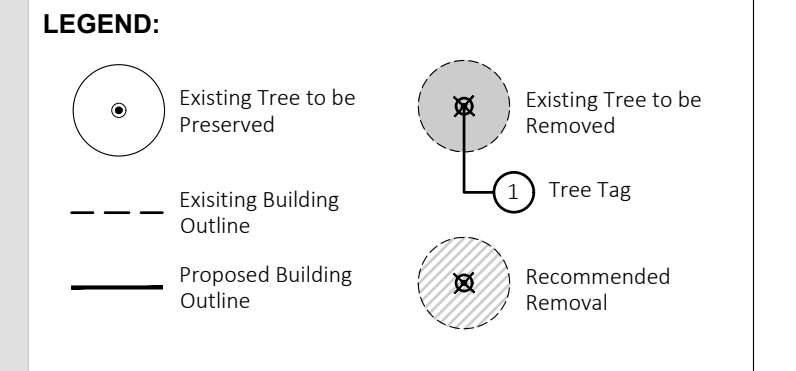
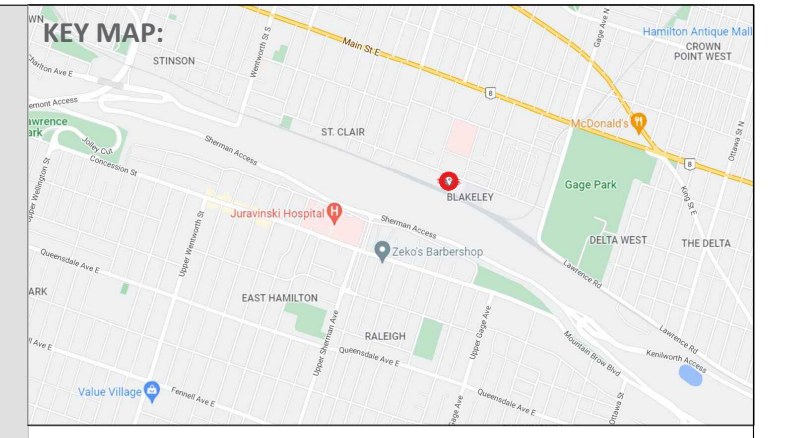
23 Twenty three private trees were inventoried through topographic survey and arborist verification as part of this application. 18 trees are proposed for removal. The remaining 5 trees are to be protected and retained. Therefore, compensation of 1:1 will be 18.



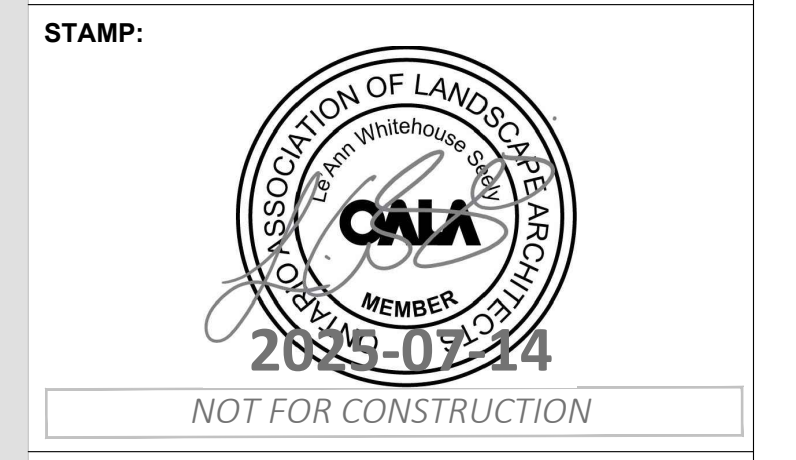
Note:  
1. In the previous submission dated 2022-04-19, Tree #9 was identified as private and to be removed, however, after identifying that the existing fence to remain at this location is placed incorrectly and that the tree is on the adjacent property, we are proposing for it to be retained. Proximity to tree #8 precludes tree protection fencing from being placed as per the standard 1m off dripline, therefore tree protection fencing is to be located between tree #8 and #9.

NOTE: Where surface regrading is to occur within the dripline of tree to remain, hand tools are required.

NOTE: In locations where tree protection fencing is not located at the required 1m distance from the dripline, a certified arborist is to be on site during excavation to ensure that any roots encountered are pruned appropriately.



- Landscape Notes**
- Dimensions are shown in meters unless noted otherwise. Do not scale drawings.
  - Contractor to review layout on site with Landscape Architect prior to commencing work.
  - Contractor to verify grades and identify discrepancies prior to initiating work. Report any changes, discrepancies, or substitutions to the Landscape Architect for review prior to work.
  - It is the contractor's responsibility to locate and verify all existing utilities and services prior to construction.
  - Plant material support systems must be removed by the contractor at time of final acceptance. No extras will be paid to complete this work.
  - Contractor to provide minimum one (1) year warranty from date accepted on all work unless otherwise specified.
  - Grading and servicing shown is for information purposes. For grading and servicing information refer to engineering drawings.
  - For lighting information and power distribution refer to the electrical drawings.
  - Drawings are for construction only if Landscape Architects stamp is signed and dated by the Landscape Architect, and plans are approved by the Municipality.
  - Tree planting within the municipal right-of-way to be undertaken by the Municipality unless noted otherwise.
  - Unless otherwise specified all landscaped areas are to be sodded.
  - Unless otherwise specified, all undeveloped areas shall be undisturbed and kept free and clear of debris.
  - The Owner is to be aware of the Migratory Birds Convention Act, 1994. This Act is implemented by Environment Canada and the Owner is to make every effort to avoid removal of vegetation from the period of March 31st to August 31st.



**REVISIONS / SUBMISSIONS**

NO.	DESCRIPTION	DATE:
4	For ZBA Resubmission	2025-07-14
3	For ZBA Resubmission	2023-05-05
2	For ZBA	2022-04-19
1	For Client Review	2022-03-28

**CLIENT:**  
2115616 Ontario Inc.

**PROJECT TITLE:**  
338, 338 1/2 Cumberland Ave.,  
Hamilton, Ont.

**SHEET TITLE:**  
Tree Protection Plan

**DWG No. L2**  
**SHEET No. 2 of 2**  
**PROJECT No. 047-21**  
**SCALE:** As shown

**DRAWN BY:** AP  
**DESIGN BY:** LWS and AP  
**CHECKED BY:** LWS  
**NORTH ARROW:**