



Pop out graphics – (More Data)



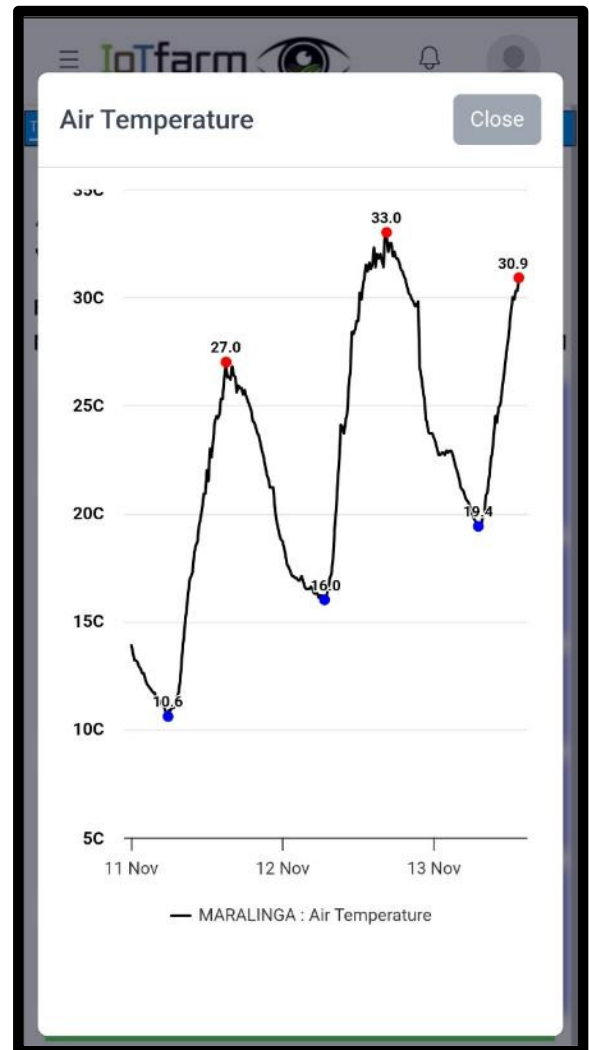
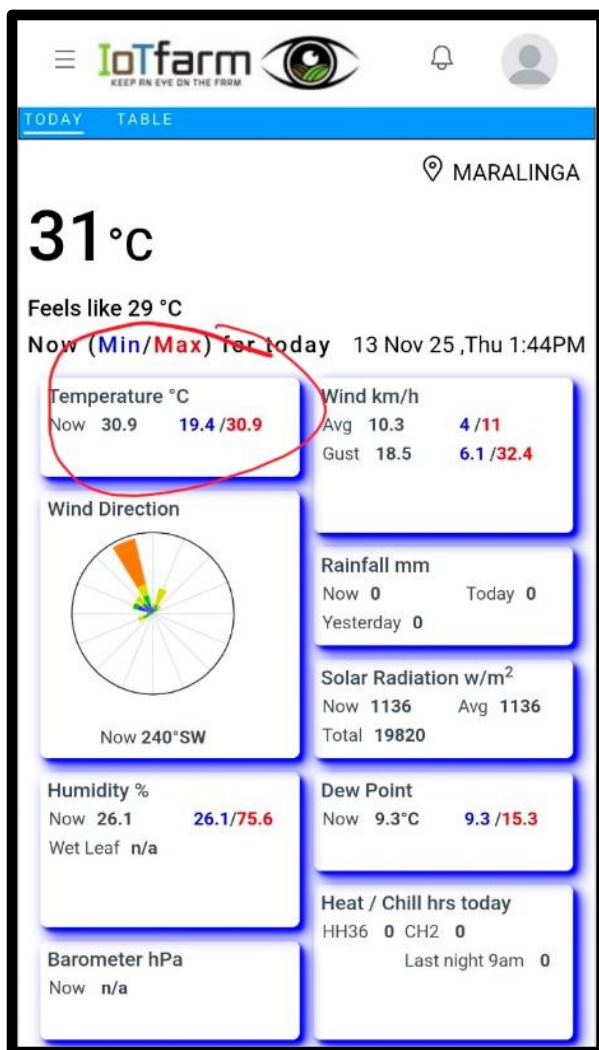
Leet Wilksch

0408 428 714

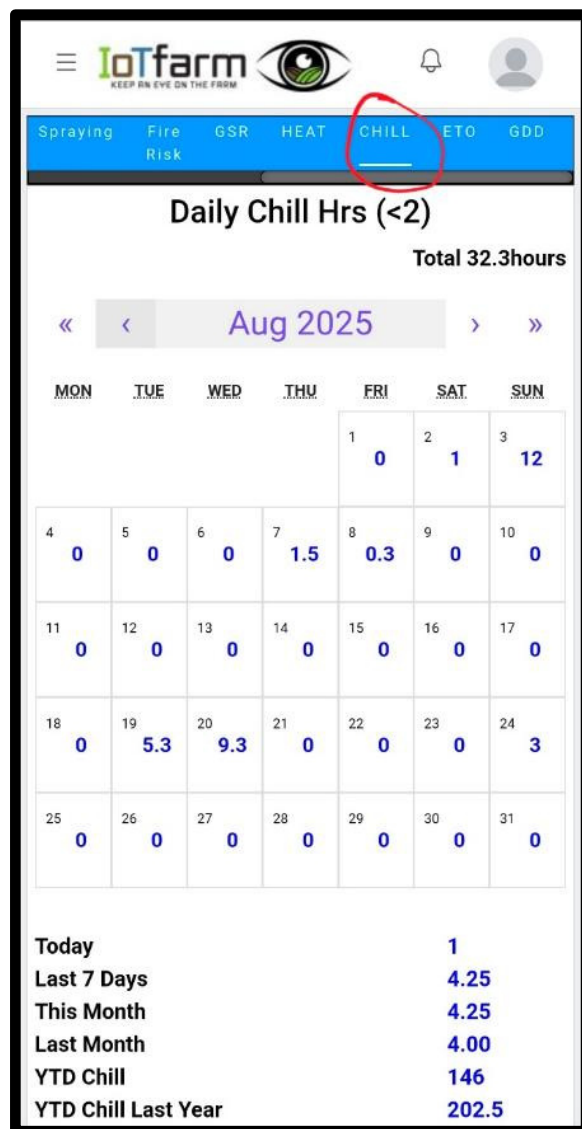
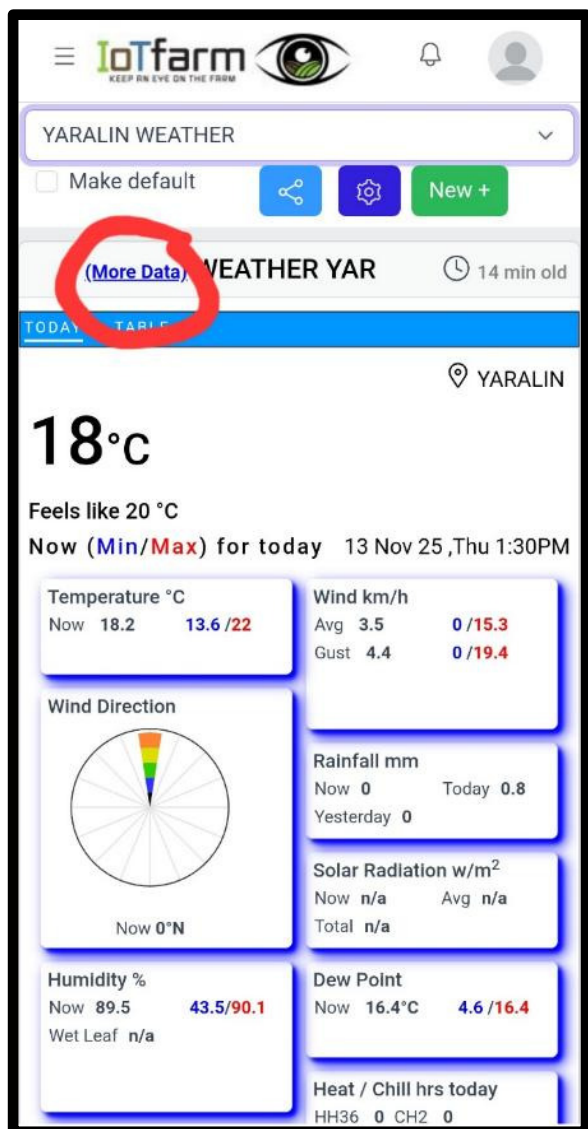
leet@agbyte.com.au

*Images taken on a phone screen – PC will function similar but with some differences to the screen layout

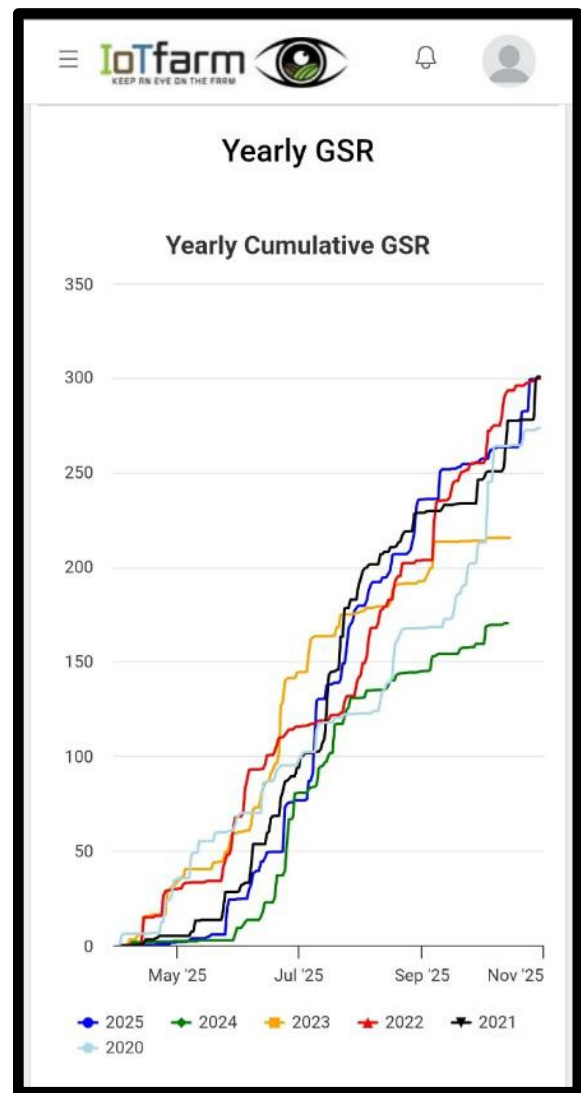
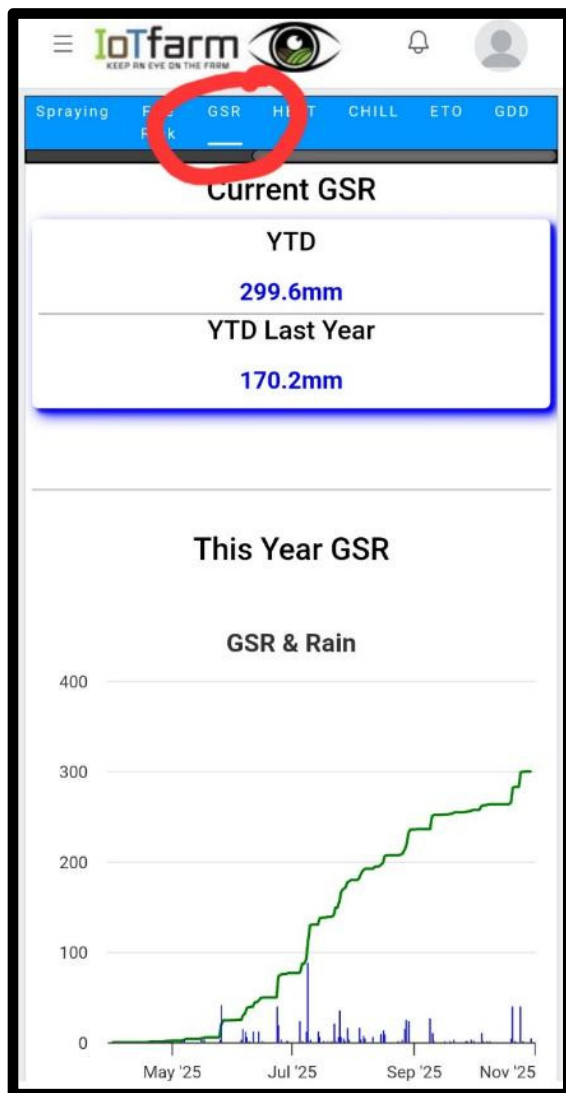
1. Main dashboard page with weather summary widget on top, click on any of the buttons with the blue edge shading to pop out a 48hr graph of retrospective data.



2. Main dashboard page with weather summary widget on top, click on [\(More Data\)](#) To go to the historic data summaries for various weather observations. In this example CHILL has been selected to display a calendar showing the Daily Chill Hours in August where there was temperature $<2^{\circ}\text{C}$ recorded. Scroll down the page to see how this compared to previous seasons.



3. Clicking on GSR will show the Growing Season Rainfall (April 1st to October 31st) as well as the Year To Date rainfall (starting January 1st). Scroll down the page to see how GSR compares to previous seasons



4. Clicking **(More Data)** next to a graph will pop out a 30 day graph which you can scroll and select the time frame to view. You can also toggle on/off the various sensors, in the case below, Dew Point & Relative Humidity have been toggled off by simply clicking on them.

