



This guide provides essential instructions and best practices for the proper installation of WPC fluted panels. Adhering to these guidelines will help ensure the product's integrity, longevity, and performance. Note that the information in this guideline is provided freely and serves as general guidance, without granting or implying any warranty.

PRELIMINARY CONSIDERATIONS

MATERIAL:

- All wood materials are prone to changes such as expansion, contraction, bending, and deflection when exposed to external environmental conditions.
- Due to batch-to-batch variations in surface texture and color caused by natural and processing factors, it is recommended to purchase all required WPC fluted panels for a project in a single transaction.

TRANSPORTATION:

- Properly secure WPC fluted panel components during transportation and loading to prevent movement during transit.

STORAGE:

- Place WPC wall panels on a flat, even surface during storage to prevent distortion or bending over time.
- When stacking is necessary, ensure even weight distribution to prevent deformation of lower components.
- Do not store in direct sunlight to prevent significant heat-induced expansion before installation.

MAINTENANCE AND CARE

MAINTENANCE:

- Avoid heavy impact or excessive force on WPC fluted panels, especially at the edges, to prevent structural damage.

CLEANING:

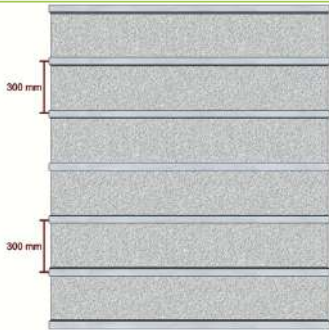
- Wipe the WPC fluted panels periodically with a clean, damp cloth to remove dirt, dust, and any surface stains.
- Avoid using abrasive materials or harsh chemicals that could scratch or damage the surface.

INSTALLATION PROCEDURES

MATERIALS AND EQUIPMENT:

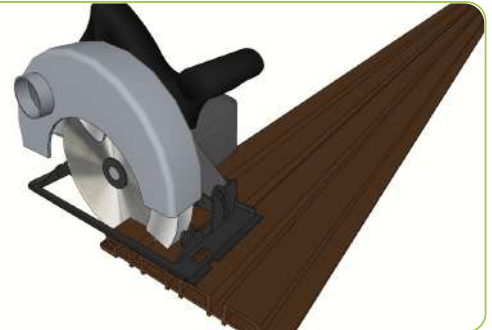
- Tape Measure
- Level
- Circular Saw
- Power Drill
- Screws
- WPC Fluted Panels
- Metal Clips
- L-corner
- Construction adhesives

1



Start by affixing aluminum subframe onto the wall with appropriate fasteners at recommended spacing of 300 mm on center.

2



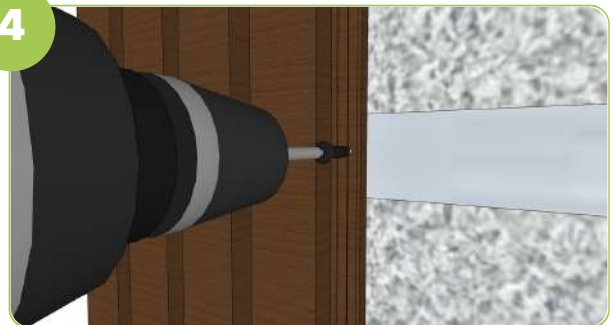
Cut the WPC wall panel to the necessary length or trim the ends as needed to achieve a level base to ensure no any end gaps during installation.

3



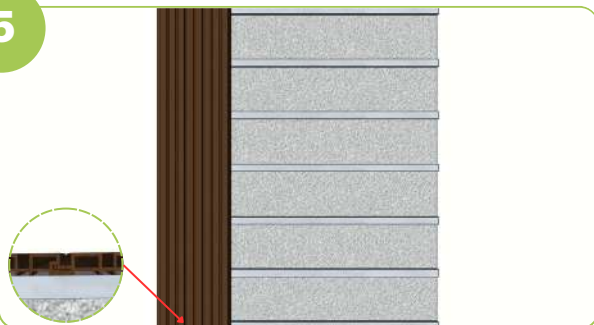
Set the first WPC wall panel perpendicular to the subframe.

4



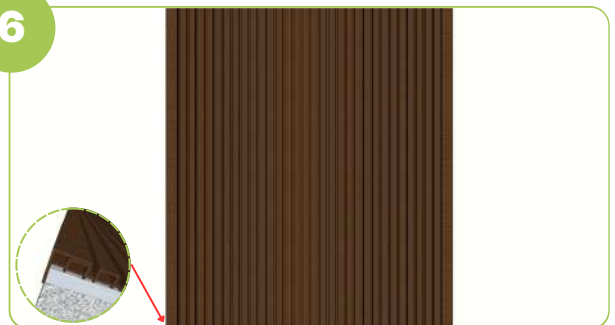
Pre-punch directly onto the groove edge of the WPC wall panel and use screws for fastening.

5



Slot the tongues of succeeding WPC wall panels into the grooves of the previous panels, concealing the screws, until reaching the desired coverage.

6



Securely affix the L-corner to the corners of the WPC wall panel using construction adhesives.