

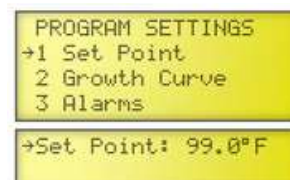
Calibrating Your Hog Hearth System

Calibrating your IHT Heating system is crucial for several reasons. Firstly, it ensures the correct heat output, which is essential for maintaining a comfortable and consistent temperature. Additionally, proper calibration leads to improved energy savings, as the system operates at its optimal efficiency. Lastly, calibration reduces wear and tear on the heat mats, prolonging their lifespan and minimizing the need for replacement.

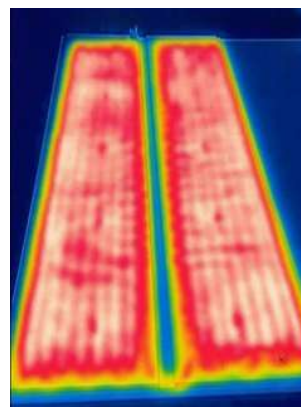
These instructions are for the HH-HMC-2, however the premise is the same for most controller types.

Follow the steps below to calibrate your Hog Hearth Heating System.

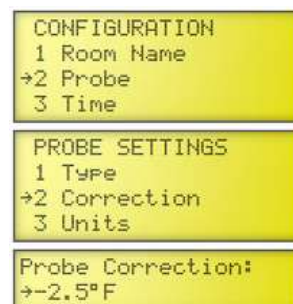
- Set your Set Point to be your Day 1 Temperature (Use 95 Degrees if unknown)



- Leave the system for 30-45 mins to come up to temperature and stabilize.
- Take a thermal camera (preferred; temp guns are often inaccurate) and measure the mats in one row.



- Take the average of the mats temperature and record that number.
 - Add up all the temps and divide by the number of mats.
- On the HMC-2, find the probe configuration menu, and adjust the probe correction until it matches what you recorded your average to be by adding a positive or negative correction.



Note: It is normal for the mats to be 3-5 degrees off from the controller, as these types of probes are never 100% accurate. to account for resistance tolerance