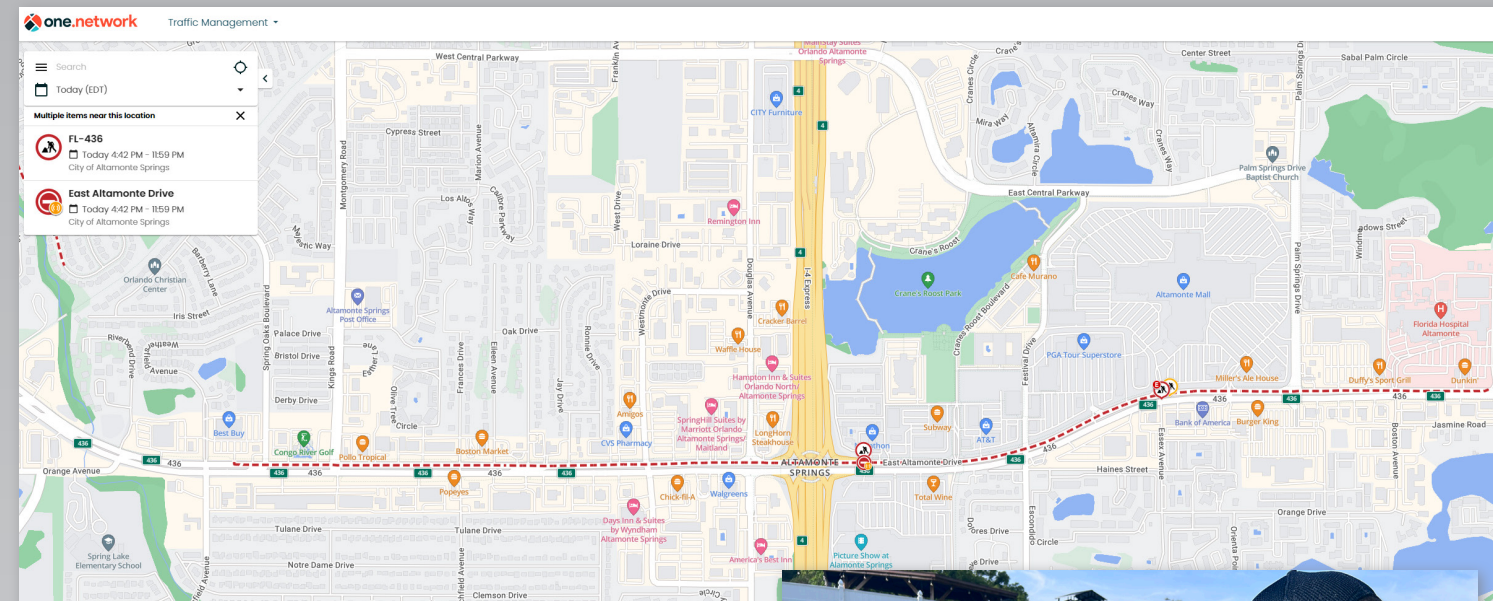


# Enhancing Construction Zone Safety

The City is continually seeking ways to enhance safety in Altamonte Springs. With ongoing construction in various areas, we are dedicated to keeping you informed as you plan your journeys. The City has established a pioneering partnership with one.network, a prominent global provider of digital work zone and road management platforms, to implement a system where every driver is seamlessly connected to real-time updates on road closures. This partnership deploys one.network's Live Link work zone safety module and Network Monitor, incorporating a traffic insights module that utilizes real-time data and interfaces with publicly-available online mapping systems and navigation providers. The objective is to furnish real-time data to drivers about lane closures, detours or speed limit changes through the maps you have on your phone and car. This initiative is not solely focused on convenience but also on safeguarding lives and enhancing road safety for everyone.

The City of Altamonte Springs is unwavering in its commitment to creating a safe, well-informed community for its residents, business stakeholders and visitors. Through the Live Link platform, we are empowering road construction workers, utility crews, emergency personnel and even City event staff to be a part of creating safer communities. They can now directly notify GPS navigation providers, such as Waze or Google Maps, about road disruptions using an intuitive cellphone application. This tool allows City crews to contribute to their safety by sharing information on the precise location of work zones and lane closures, as well as devising detour routes and specifying work zone speed limits.

This partnership heralds the start of a series of collaborative efforts through the Altamonte Global Innovation Lab (AGIL). Our focus is on enhancing public safety and the welfare of City residents, patrons and employees. AGIL serves as a platform



for showcasing cutting-edge technologies and programs, functioning as a testbed for innovation deployment and evaluations. Our mission extends far beyond Altamonte Springs, aiming to disseminate these advancements to cities, states and countries worldwide. This is a testament to our commitment to global innovation and safety.

The State of Florida has implemented this system for its roadways, and Altamonte Springs has taken the lead in Florida to test it for city and county use. The Live Link and Network Monitor platforms will prove highly advantageous in various situations commuters encounter, such as road closures due to construction, maintenance or accidents. Additionally, this service will be vital during emergencies in identifying hazards such as fallen trees or post-hurricane flooding. The Network Monitor identifies severe and unusual congestion, monitoring average speeds, delays and queue lengths near work zones, events and incidents. Traffic managers will utilize real-time maps to monitor hotspots and comprehend their underlying causes.

Through our partnership with one.network, we are also paving the way for future innovation in mobility solutions. By informing drivers about lane closures due to construction, utility breaks



*one.network's technology allows City staff to make real-time work updates in the field.*

and events, we aim to enhance public safety and ensure smoother trips for residents, employees and the millions of commuters who traverse Altamonte Springs annually.

To stay informed about road closures or construction work, connect to your cellphone or car's onboard navigation system. Input your starting point and destination, and the navigation system will automatically generate a route, guiding you around any closures or areas that might cause delays. The City is proud to serve as a model for the local government deployment of one.network's technology and is dedicated to creating a safer, more enjoyable and reliable experience for drivers through innovative solutions and partnerships.

