

# THE ROSSETTI

P E N T H O U S E



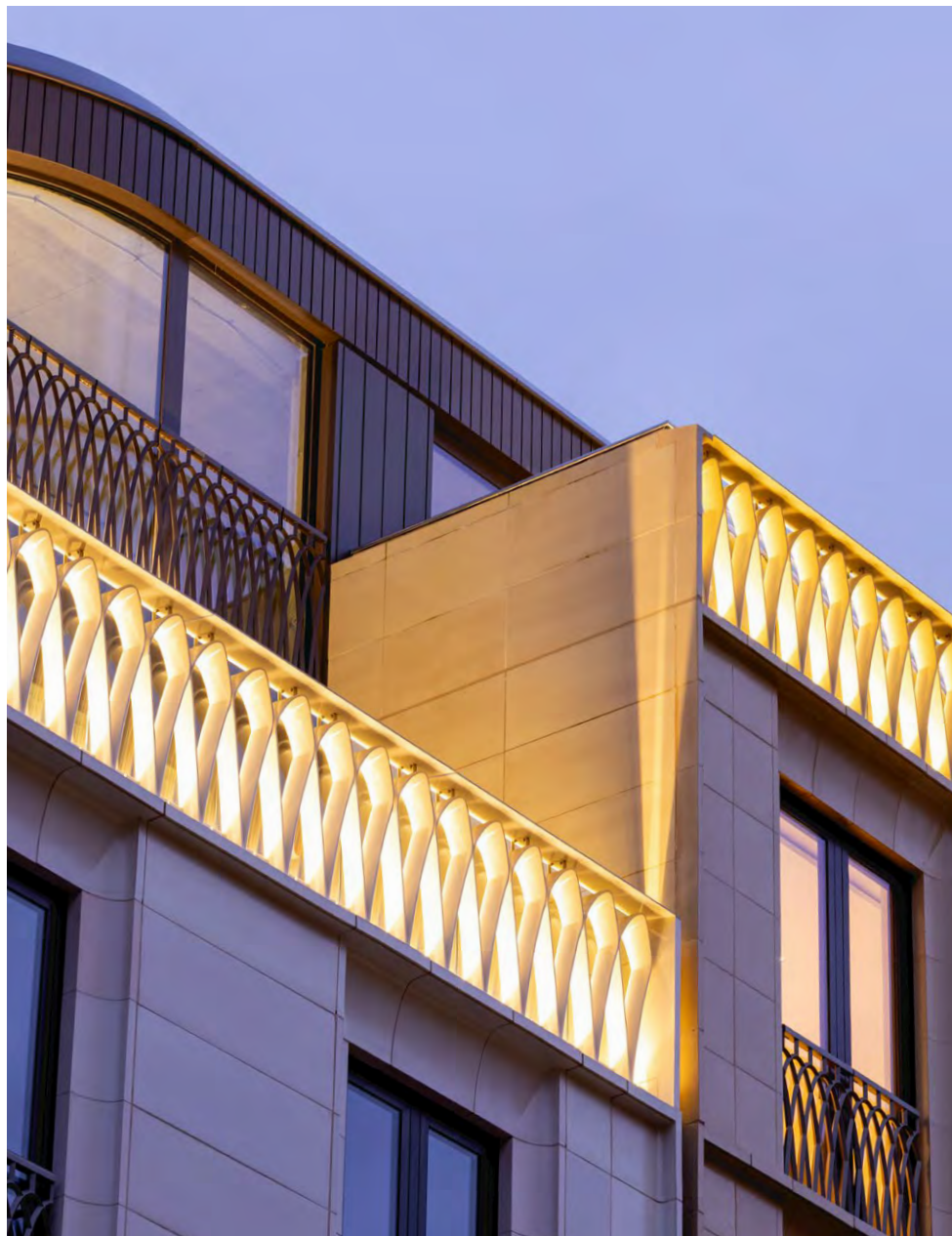
**Marylebone Square**

LONDON W1



*“Choose love not in the shallows but in the deep.”*

~ Christina Rossetti





## Marylebone Square

LONDON W1

# THE ROSSETTI

P E N T H O U S E

---

An exceptionally rare opportunity to own a luxuriously appointed penthouse in Marylebone Square, set in the heart of London's most exclusive village.

This 3,600 sq ft, triple-aspect residence offers expansive lateral living with wraparound outdoor space and two EV parking bays. The interiors reflect a refined, contemporary approach—combining natural materials, open-plan layouts, and serene lighting to create a calm, elegant retreat above the rooftops of Marylebone.

A truly modern classic in one of London's most desirable addresses.







Understated







*Elegance*

Designed by  
Phil Waterson,  
interior designer  
behind London's most  
coveted residences.









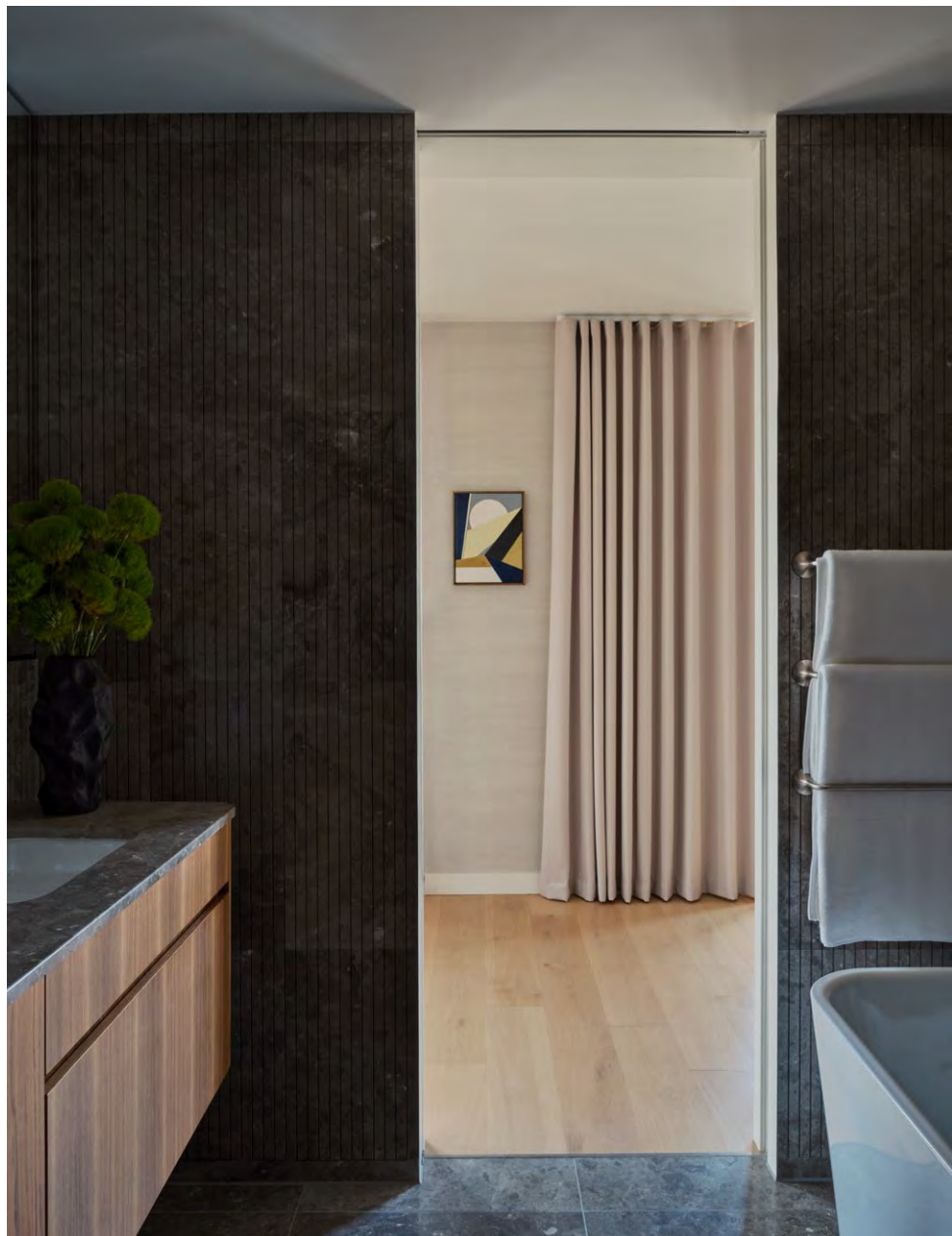












Exquisite





Designed by E8 Architecture from the inside - out, Marylebone Square is a building without corridors, the penthouse residences are reached via a beautiful central courtyard.











## CHRISTINA ROSSETTI

(1830–1894)

One of England's most celebrated poets spent much of her life in Marylebone, where she wrote her masterpiece "*Goblin Market*."

By naming the penthouse after Rossetti, Concord London honours Marylebone's rich literary heritage, forging a meaningful connection between today's residents of Marylebone and the area's rich cultural tapestry. The penthouse comes with a first edition book of Rossetti poems.



# Marylebone Square

LONDON W1

## All photography by Simon Watson

A globally renowned photographer, Simon's work has featured in editorial publications such as The New York Times T Magazine, The World Of Interiors, W Magazine, Vanity Fair Spain, Travel + Leisure and Icon Magazines in Italy and Spain.

[www.marylebonesquare.com](http://www.marylebonesquare.com)

Contact Concord London for further information:

+44 (0)20 3598 8888  
[info@concord-london.com](mailto:info@concord-london.com)  
[www.concord-london.com](http://www.concord-london.com)

A development by

**CONCORD**  
LONDON



